

CADDY PRO



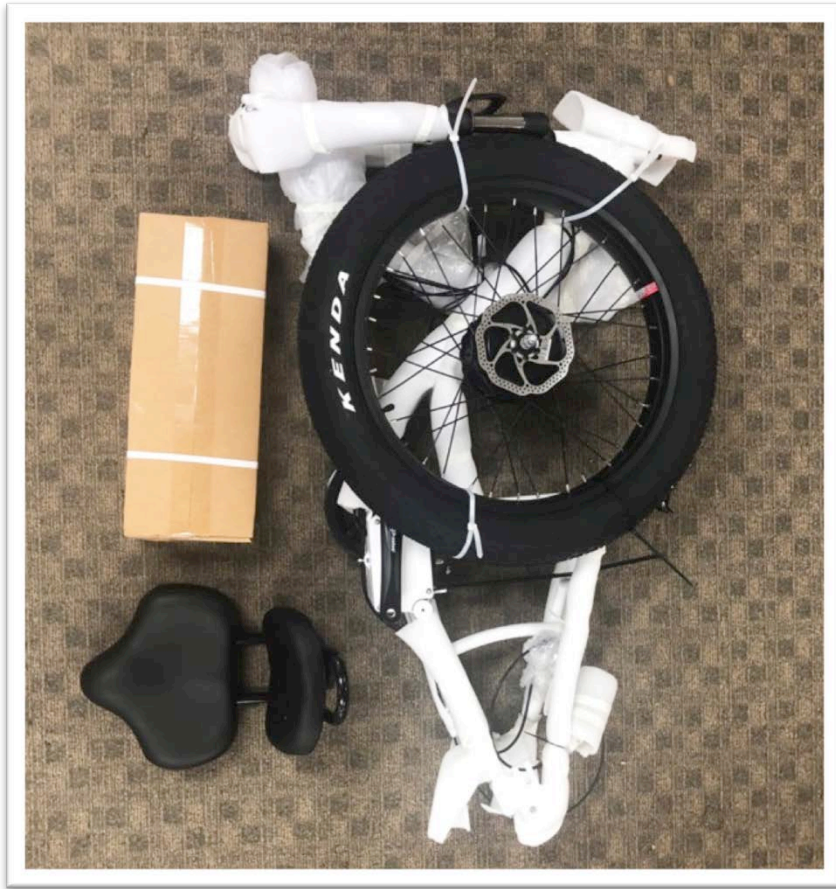
Assembly guide



The Caddy Pro comes packed into 2 separate boxes:

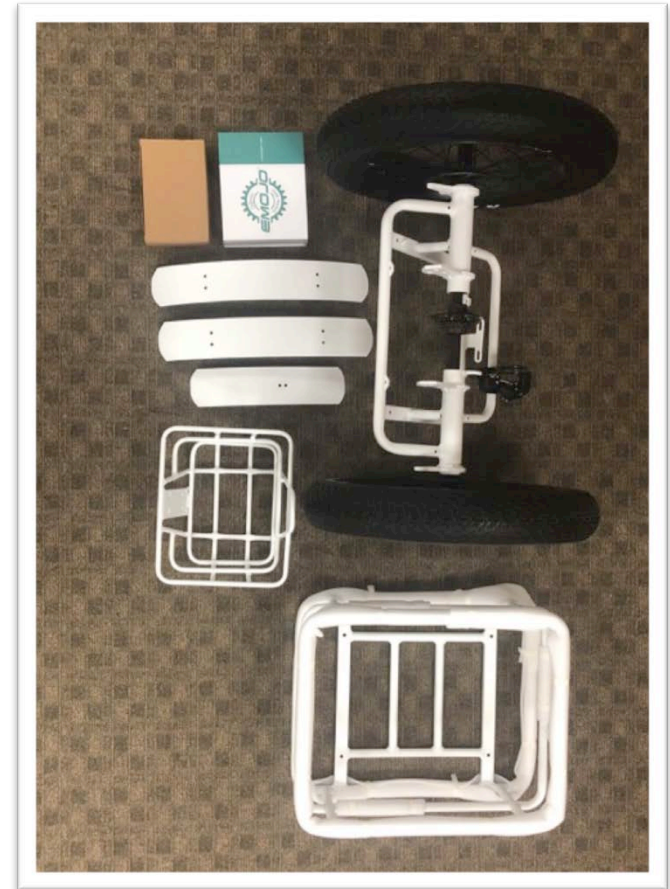
CADDY PRO

BOX 1:



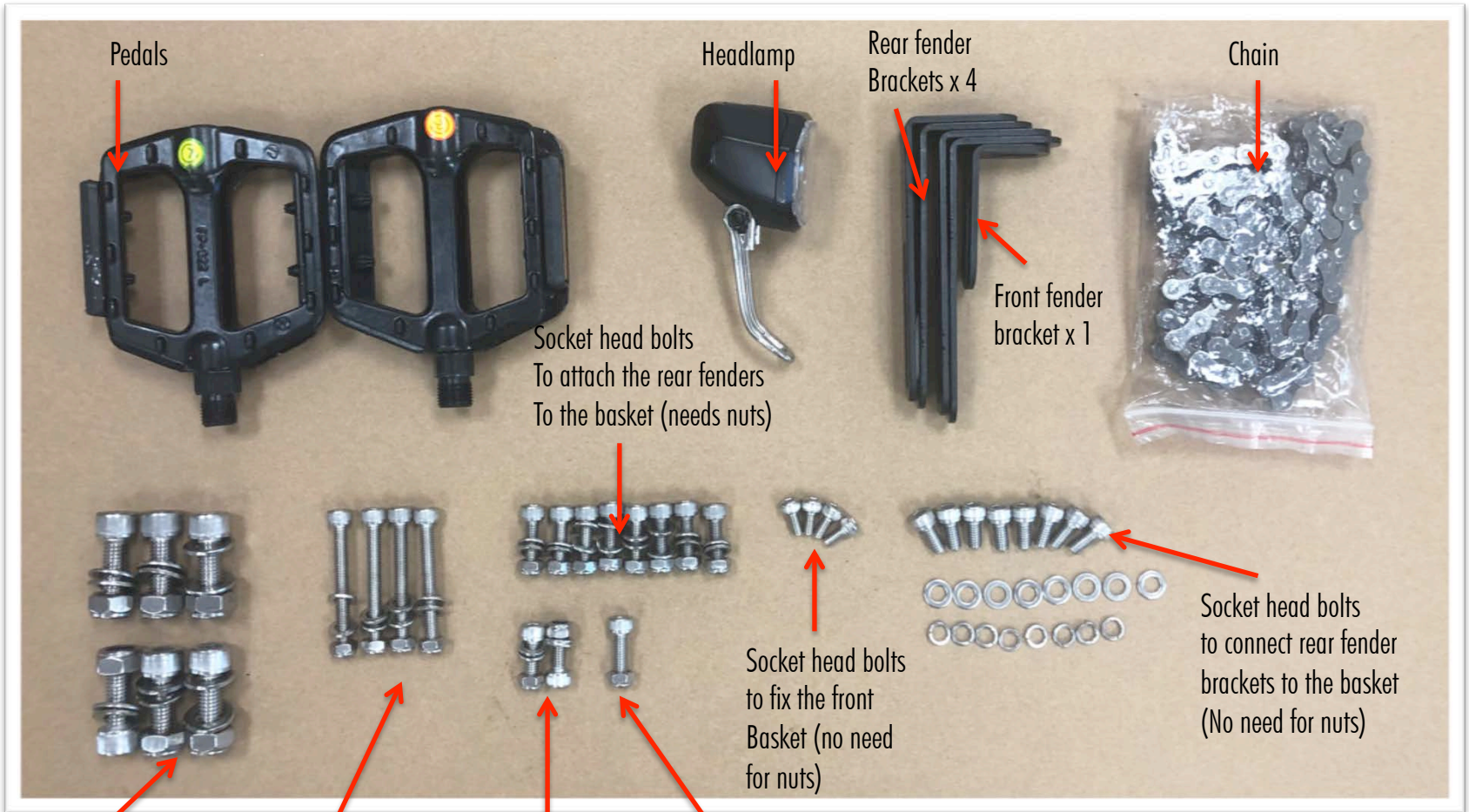
Seat, battery, front wheel and front frame section

BOX 2:



Rear frame section with wheels, front and rear baskets, fenders, charger and accessory box (pedals and headlight inside)

Identify the hardware



Pedals

Headlamp

Rear fender Brackets x 4

Chain

Socket head bolts
To attach the rear fenders
To the basket (needs nuts)

Front fender bracket x 1



Socket head bolts
to connect rear fender
brackets to the basket
(No need for nuts)

Socket head bolts
to connect front and
rear frame sections

Socket head bolts
to fix the rear
basket to the
Frame (needs nuts)

Socket head bolts
to attach the front
fender bracket
(needs nuts)

Socket head bolt
to connect the front
fender and headlight
to the fork (needs nuts)



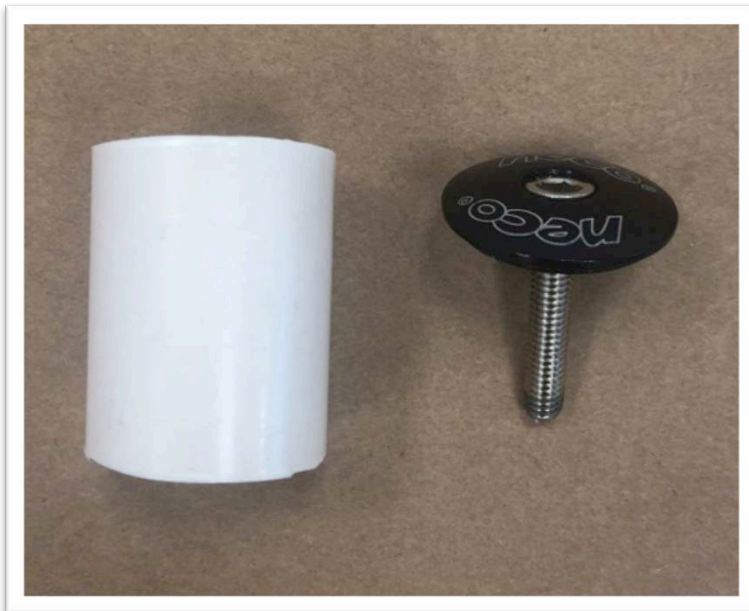
STEP 1: Cut the zip ties holding the front wheel to the frame and separate the front wheel.



CADDY PRO

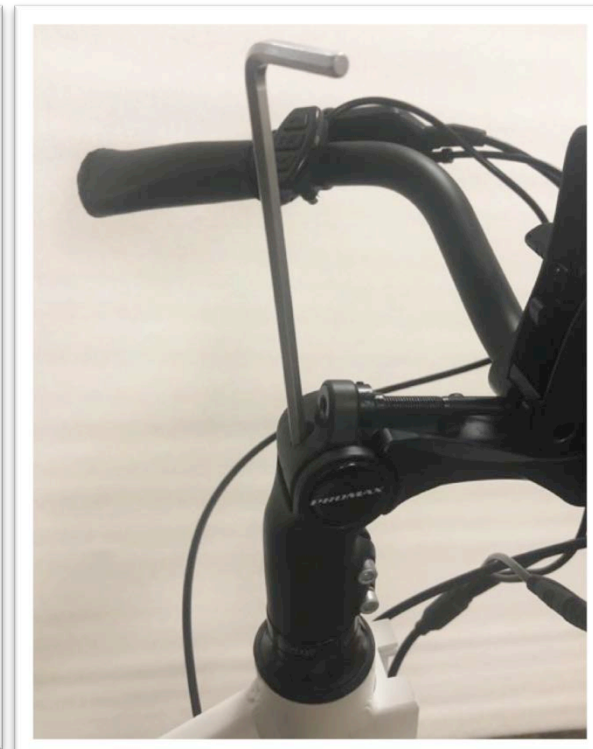
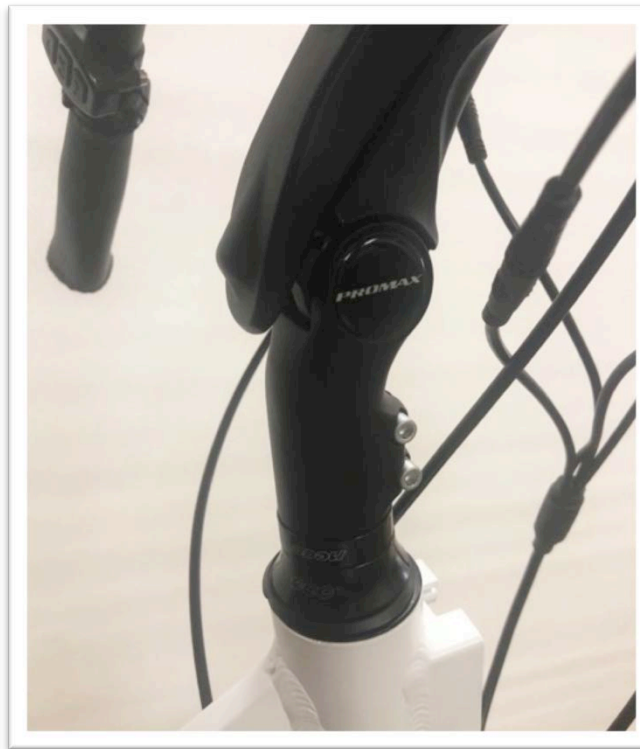
STEP 2:

Remove the protective plastic sleeve and cap from the frame so you can install the handlebar, this is protective shipping material only, you can discard it.





STEP 3: Assemble the stem and handlebar.



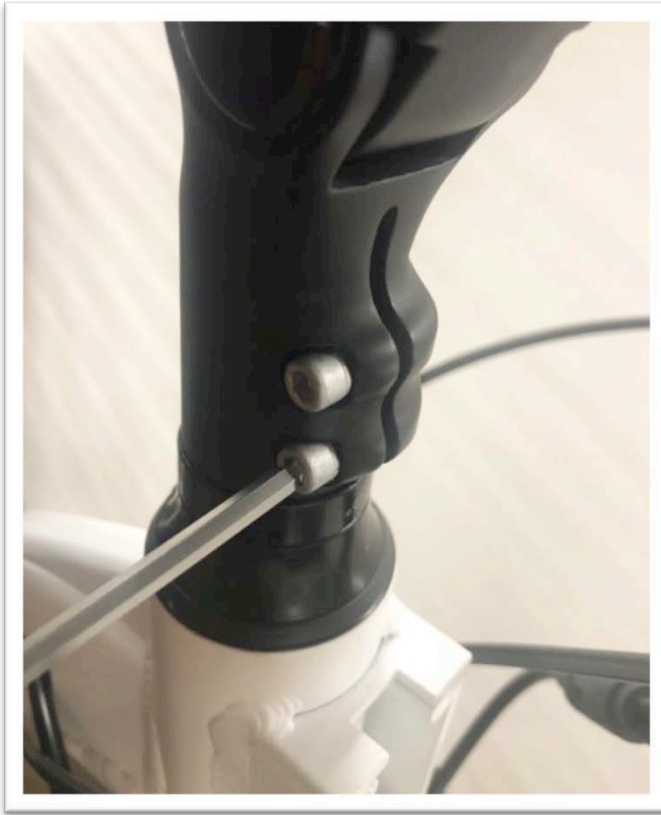
A-Insert the stem into the tube.
Use the spacer ring (arrow) to increase the handlebar height, for lower handlebar position you can remove the spacer ring.

B-Align the stem/handlebar in a straight position

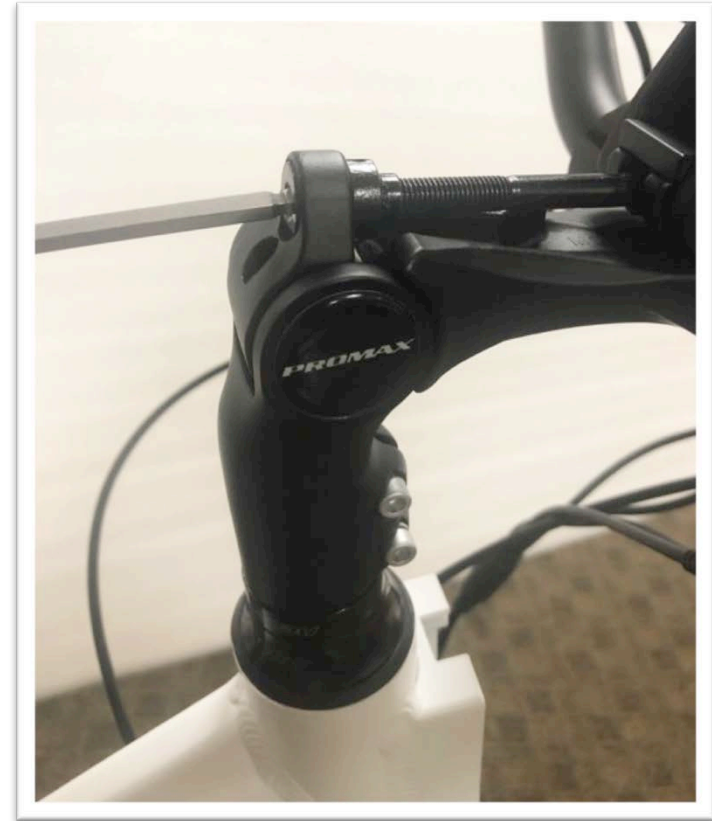
C-Secure the handlebar tightening the top screw with an allen wrench

Continues on the next page. . . .

STEP 3: Assemble the stem and handlebar.



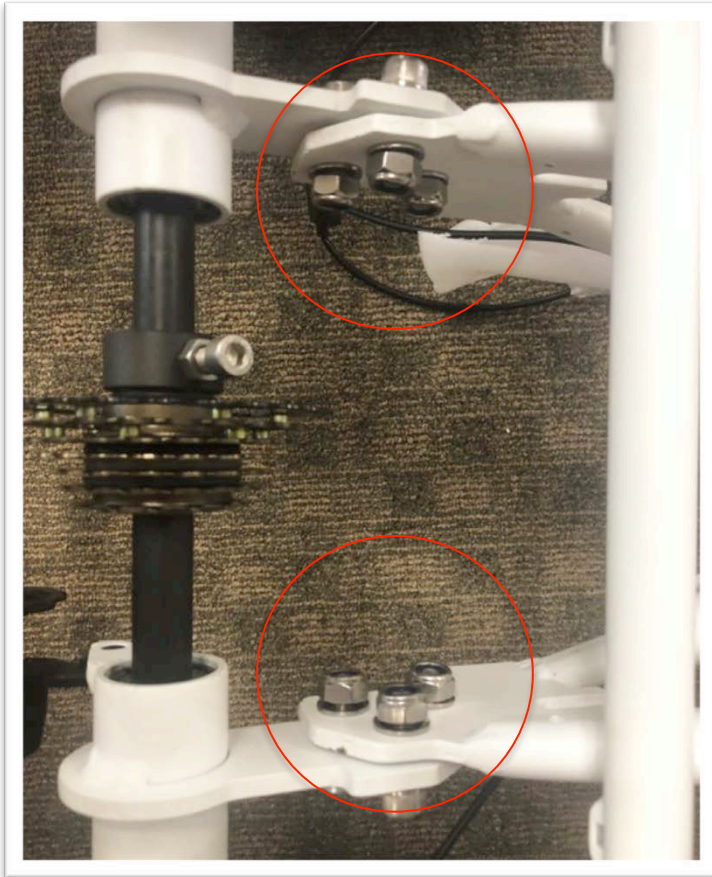
D-Tighten the socket head screws with an allen wrench



F-Adjust the angle of the handlebar with the horizontal screw, once you reached the desired angle close the latch.

STEP 4: Connect the front and rear frame sections

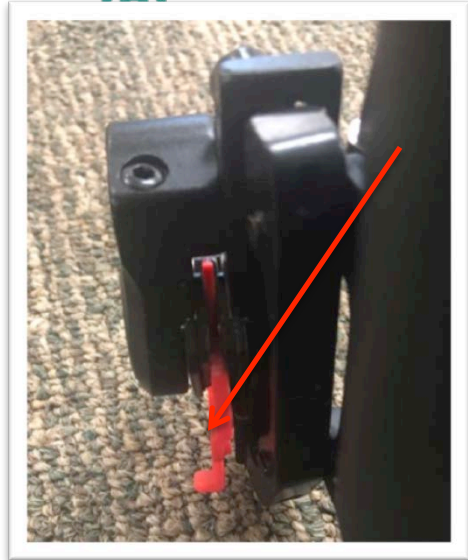
Use the 6 socket head bolts and safety nuts to connect both sections but do not tighten yet, you will need to adjust the chain before fully tightening



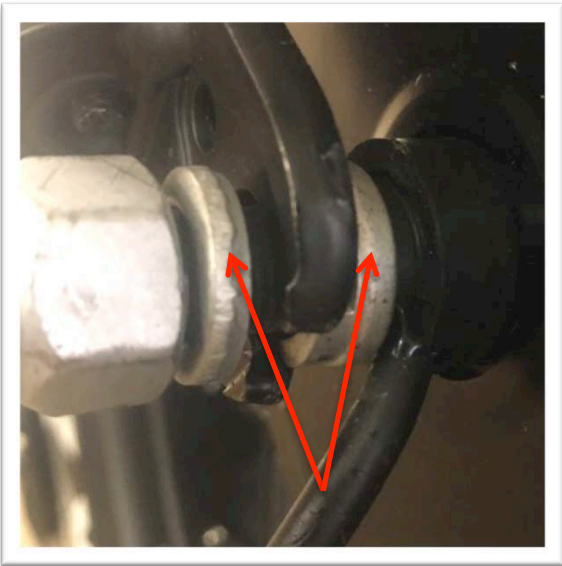
Connect front and rear section

STEP 5: Install the front wheel

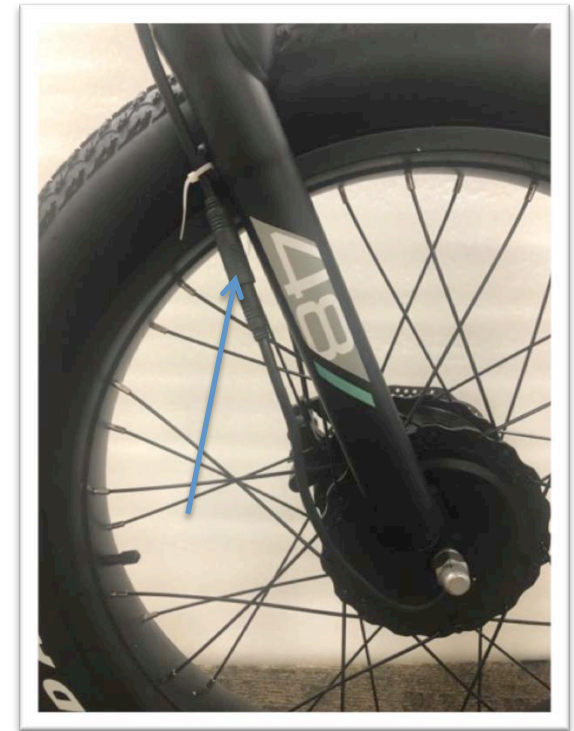
1-Remove the red plastic protector from the front brake



2-Make sure to have the spacer washers on both sides between the fork



3-Insert the front tire into the fork, the disc needs to slide into the brake caliper.



4-Connect the motor cable on the right side of the fork.

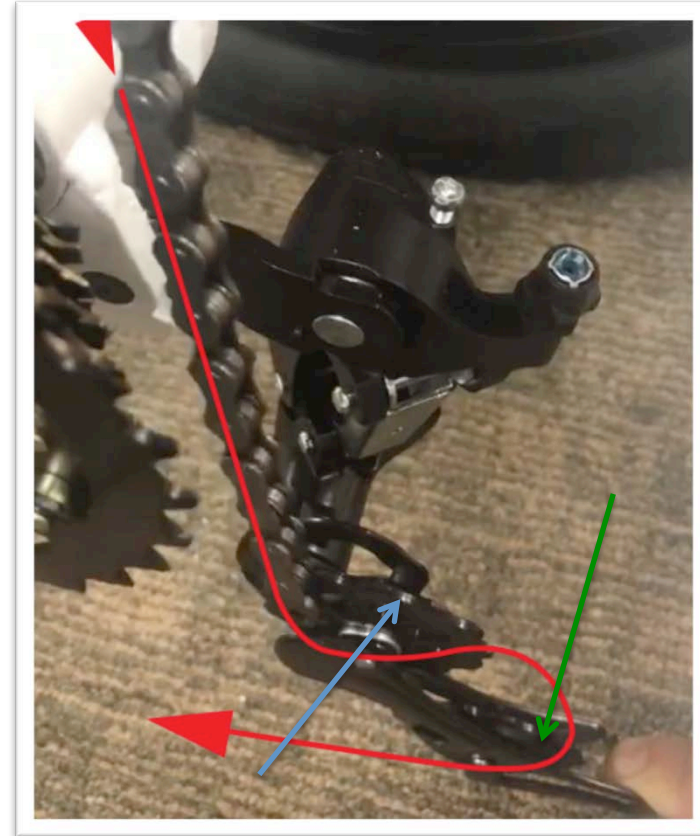
STEP 6: Install the chain



1-Tighten the bolt for the gears



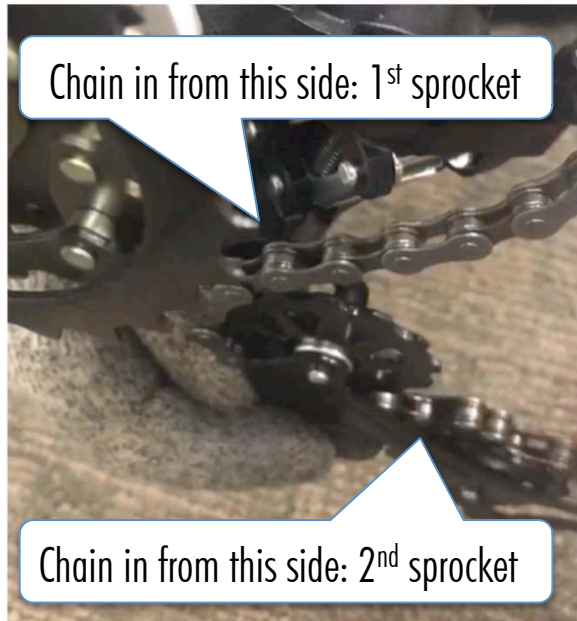
2-Pulldown the derraillieur



3-Start loading one end of the chain from top to bottom around the first small sprocket (blue arrow) . . . then around the second small sprocket (green arrow)

Continues on the next page . . .

STEP 6: Install the chain



4-Route the chain around the 2 small sprocket gears



5-With one hand keep pushing the derraileur down, pull the end of the chain out of the second sprocket



6-The chain is now routed thru the derraillieur, keep pulling it towards the front



STEP 6: Install the chain

CADDY PRO



7-Keep reeling out the chain



8-The chain is now routed around all gears



9-Link the chain together with the link lock. **Tighten the 6 bolts that connect the front and rear frame sections.**



STEP 7: Install the rear brake

CADDY PRO

The left hand controls belong to the shorter cable,
the right controls to the longer cable



1-Remove the red protective tab from the rear brake.

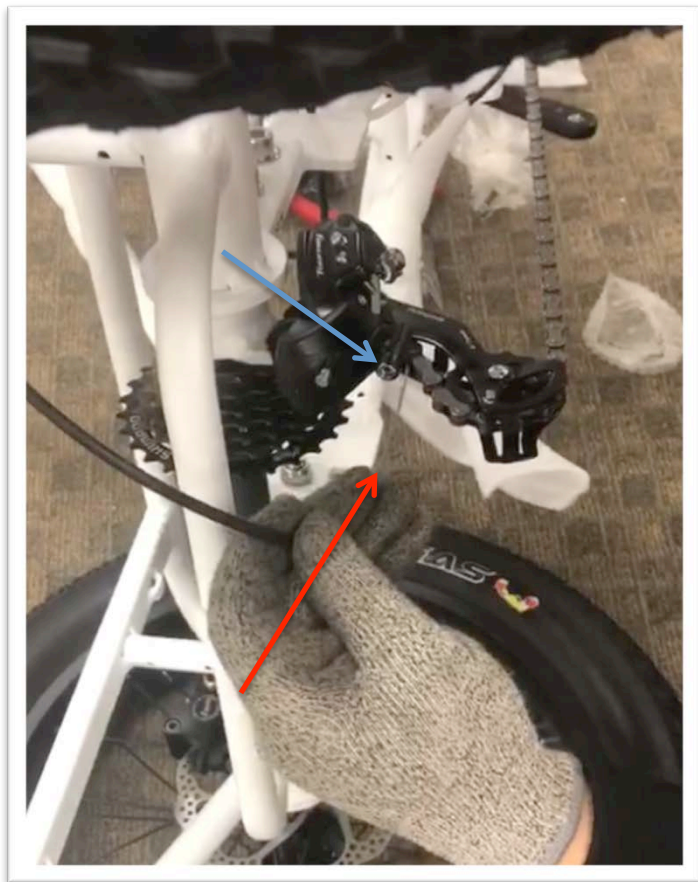


2-Attach the rear brake to the frame, slide the disc into the brake.

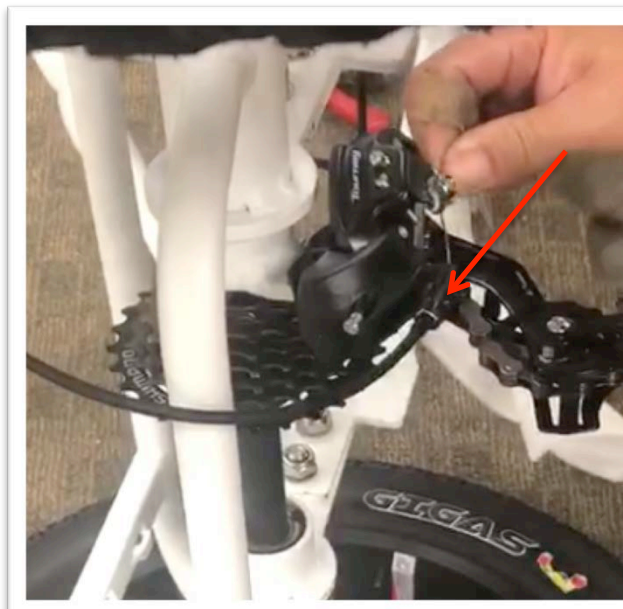


Rear brake already installed

STEP 8: Attach rear shifter cable



1-Insert the bare metal wire into the guide on the shifter



2-The wire will come to a stop once the rubber jacket hits the guide



3-Pass the metal wire under the tab of the locking bolt

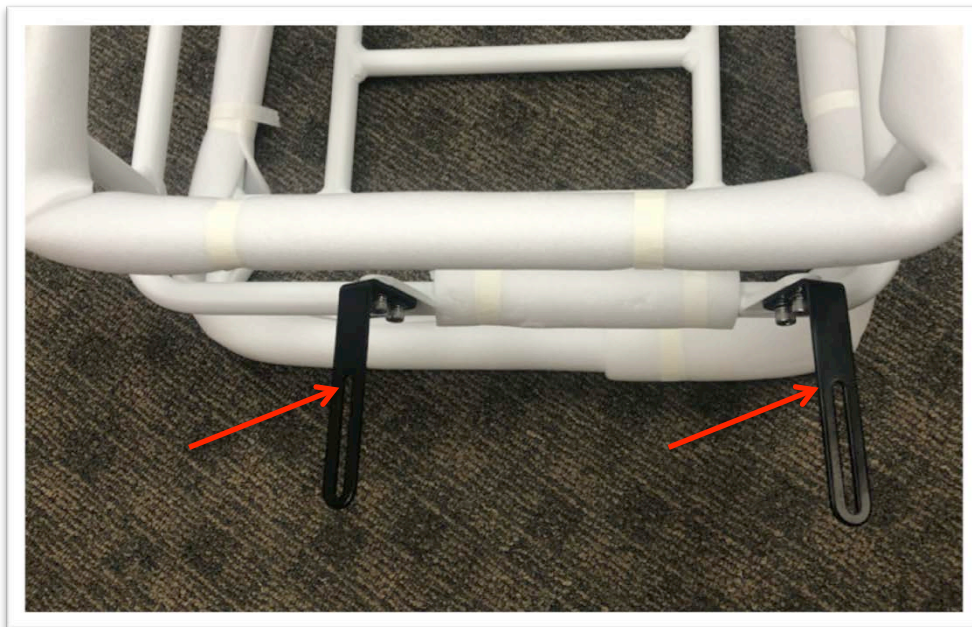
STEP 8: Attach rear shifter cable



4-Tighten the locking nut to secure the cable into position

5-Put the wire endcap and clip it with pliers

It is highly recommended to attach the rear fenders to the rear basket before fixing the basket to the frame.



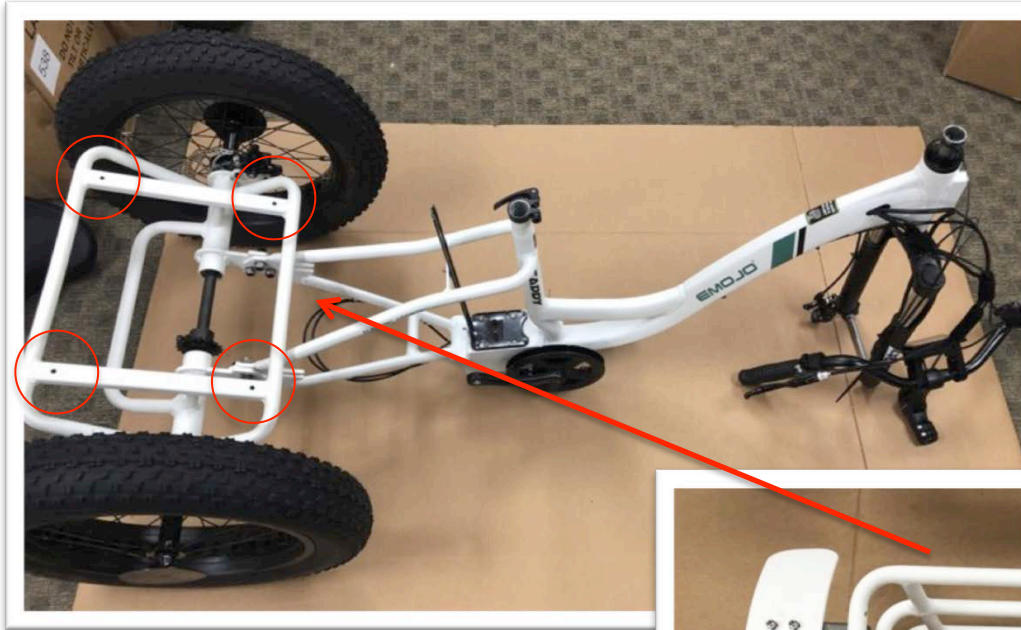
1-Fix the rear fender brackets to the rear basket



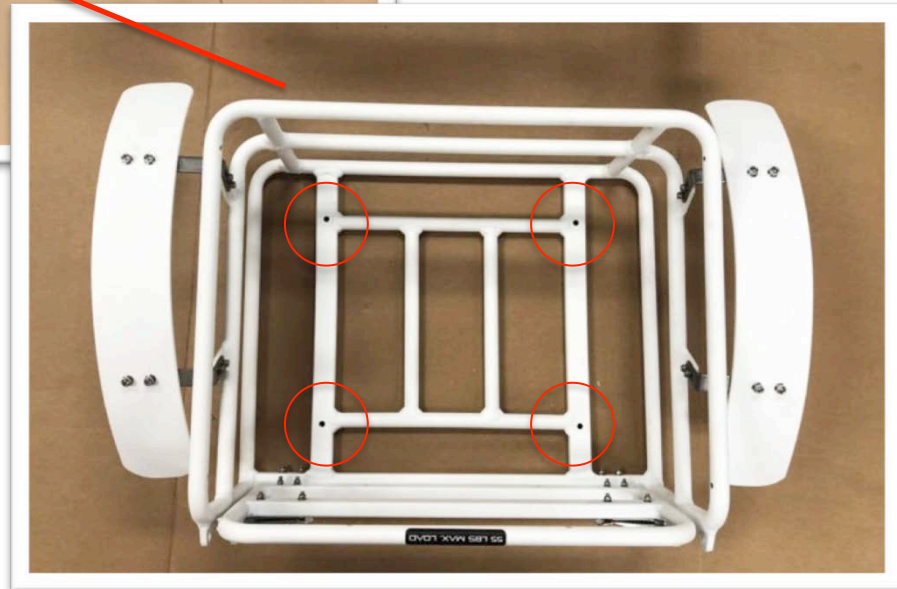
2- Attach the rear fenders to the brackets with the short bolts

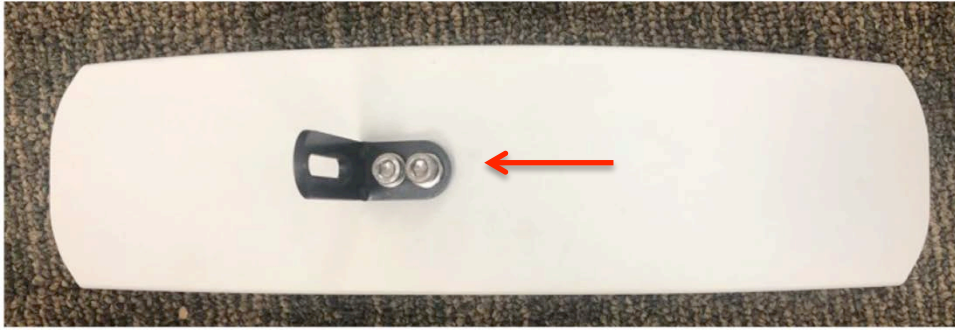
Continues on the next page . . .

Fix the rear basket with fenders to the frame using the long bolts with washers



Secure from underneath with the safety nuts





Attach the bracket to the front fender



1-Install together the front fender and headlamp onto the front fork hole

2-Secure both with the socket head bolt





Connect the wires to the headlamp: The positive wire plugs on the side marked with the + sign



To identify the positive wire, look for the wire marked with text on the rubber insulation



STEP 11: Headlight

CADDY PRO

To turn your headlight on:

- 1-Turn on your electric system by pressing and holding the M button for 3 seconds
- 2-Press and hold the arrow Up button until the light comes on, you will see the light icon on the screen
- 3-To turn off the light press and hold the Up button again. The light icon will turn off from the screen.



Press and hold UP button to turn light on/off

Light ON indicator on the screen

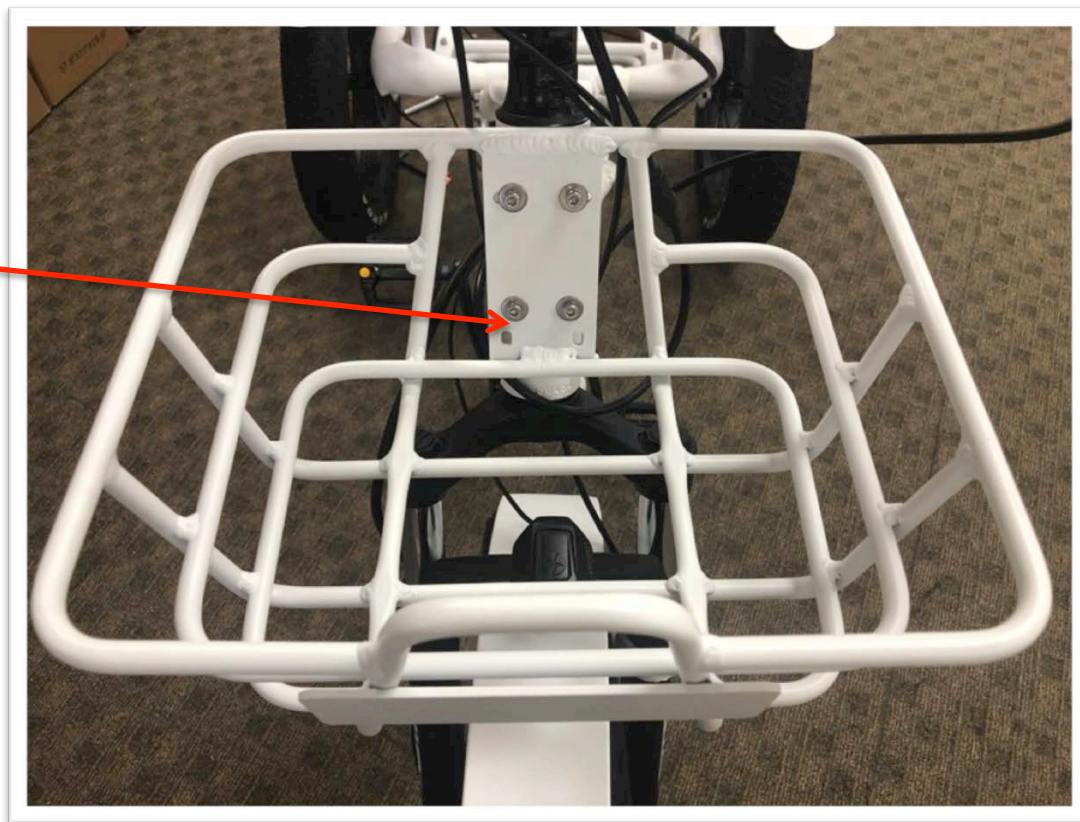
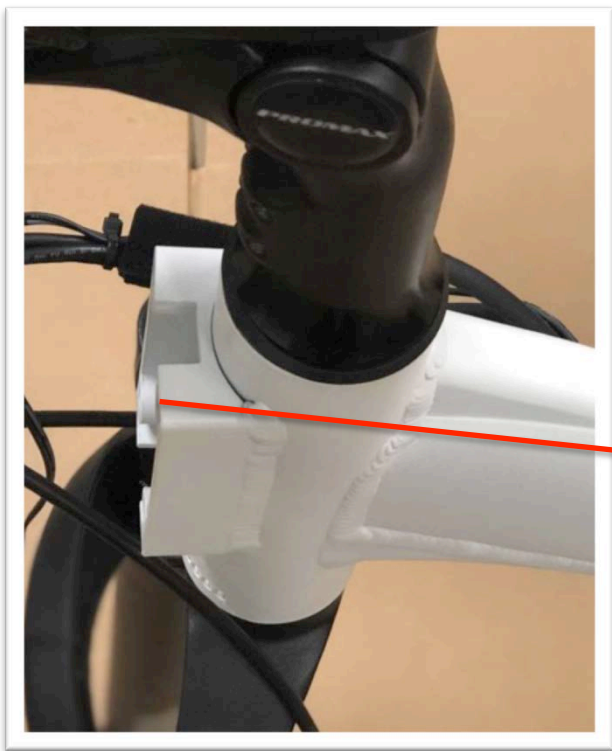
Press and hold M button to turn system on





STEP 12: Front basket

CADDY PRO



Attach the front basket to the frame using 4 socket head bolts.





From the accessory box, identify the left and right pedals. Fix the pedals to the crank, the left pedal is tightened counter clockwise, the right pedal clockwise.
Hand-tighten the pedals first, then use a wrench.