

# FLUID FLASH® 915

## Detail Sealant



### FAST, EASY and PERMANENT!

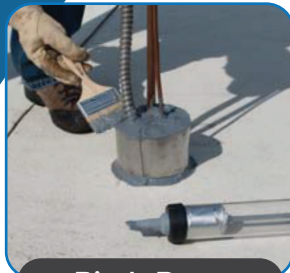
A maximum performance, high build, liquid applied waterproofing sealant, Roof X Tender® 915 Fluid Flash® is a FAST, EASY and PERMANENT way to seal base flashings, curbs, penetrations, seams, HVAC units, tie in dissimilar surfaces, and to make all kind of repairs.

- Fast Install with up to 50% Labor Savings
- Solid Monolithic & Waterproof Configuration
- Great for Sealing Pitch Pans
- Or “Pitch the Pocket” and Earn More Profit!

Eliminates cost of curbs and excess sealant.

12 sausages per pail

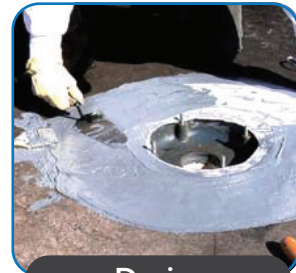
### Ideal For Use On:



Pitch Pans



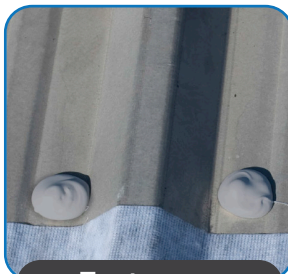
Skylights



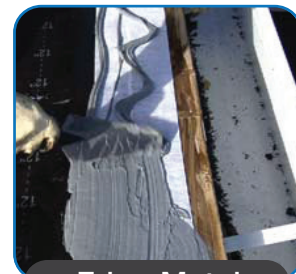
Drains



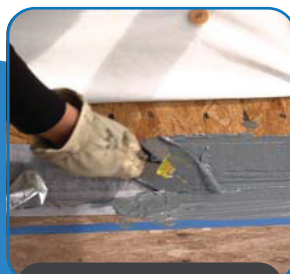
Vent Stacks



Fasteners



Edge Metal



Base Flashing



Term Bars



Lead Repair

# FLUID FLASH 915

## Detail Sealant

Apply Using



SAUSAGE GUN  
or



CUT & SQUEEZE

### APPLICATION

Roof X Tender® 915 Fluid Flash® can be dispensed manually. Simply cut a small hole at the top of the sausage with a utility knife and squeeze. It may also be applied by using a sausage type caulking gun. For use over Mod Bit, BUR, Metal, EPDM, TPO, PVC, Hypalon, Concrete, Fiberglass, Foam, etc. The substrate must be clean and free from grease and oils. Metals must be degreased with a suitable solvent (alcohol). On newly installed membranes, RX-396 primer may be needed pending results of a peel adhesion test. Apply with a brush or trowel. If exposed, roofing granules should be embedded in top layer. For Professional Use Only.

### SPREAD RATE & COVERAGE

Contains 12 Sausages per container. Approximately 1 Sausage per 4" penetration.

Dry Mills Coverage - 1 Sausage Pack:  
1 Pack @ 62.5 mills = Approx. 2.0 sq. ft.  
1 Pack @ 125 mills = Approx. 1.0 sq. ft.  
1 Pack @ 250 mills = Approx. 0.5 sq. ft.

Dry Mills Coverage - Per Case (12 Sausage Packs ≈ 1 gal.):  
12 Packs @ 62.5 mills = Approx. 25 sq. ft.  
12 Packs @ 125 mills = Approx. 12.5 sq. ft.  
12 Packs @ 250 mills = Approx. 6.25 sq. ft.

### PERMANENT REPAIR SYSTEM

Step 1: Cut a piece of Tri-Built® polyester fabric to extend over and a minimum of 2" past all damaged areas. See specific Roof X Tender Detail Sheet for polyester requirements on or around penetrations, cant strips, tie ins or other detail areas.

Step 2: Dispense 915 Fluid Flash onto surface, brushing it over and 3 - 4" past the damage or area to be sealed. Use one sausage for every one square foot. Masking tape can be used to keep detail work looking professional.

Step 3: Immediately embed polyester fabric over damaged area and into wet sealant. Brush polyester to eliminate all wrinkles, voids, blisters, etc.

NOTE: Roof X Tender Fleece Back Tape may be used in lieu of steps 1 & 2.

Step 4: Apply an additional layer of 915 Fluid Flash Detail Sealant at one sausage per each one-half square foot over the reinforcement and at a minimum of 1/2" past the edge of the polyester. Surface should be completely smooth and the fabric pattern should not be visible.

Step 5: If applying a field coating, leave the top polyester surface of tape or reinforcement exposed. Do not top coat with Fluid Flash.

### CLEANUP:

Clean tools with xylene.

*Best Used With Roof X Tender Fleece Back Tape*