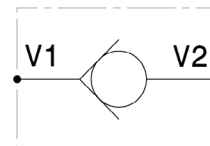
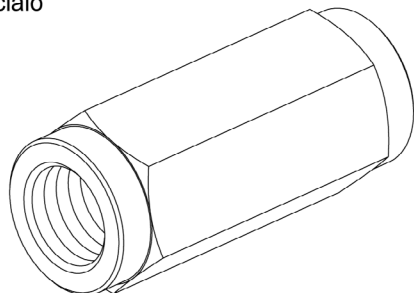


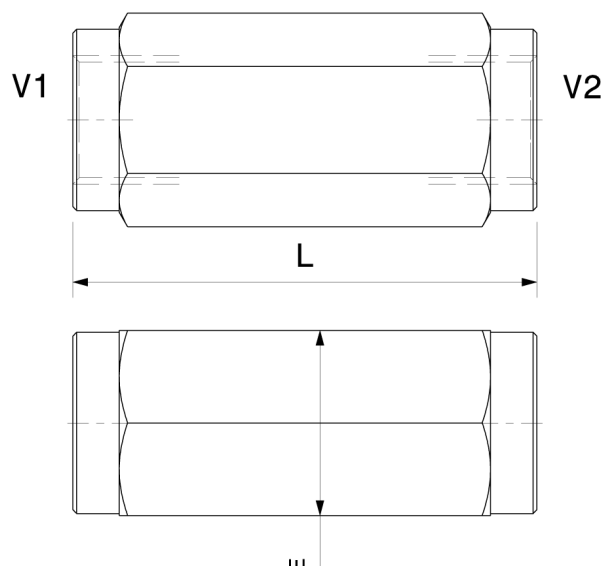
Valvola unidirezionale in linea a sfera e a cono, filettata femmina - femmina  
*In line check valve, ball and poppet type, female - female threaded*

mod. **VU-SF** (sfera - ball) / **VU-SP** (cono - poppet)

Corpo in acciaio  
*Steel body*



Modello Type	V1 V2	Portata massima Max Flow	Pressione massima Max pressure
<b>VU14-SF</b>	1/4" GAS	15 l/min 4 gpm	500 bar 7250 psi
<b>VU38-SF</b>	3/8" GAS	30 l/min 8 gpm	500 bar 7250 psi
<b>VU12-SF</b>	1/2" GAS	50 l/min 13 gpm	500 bar 7250 psi
<b>VU34-SF</b>	3/4" GAS	90 l/min 24 gpm	350 bar 5000 psi
<b>VU14-SP</b>	1/4" GAS	15 l/min 4 gpm	500 bar 7250 psi
<b>VU38-SP</b>	3/8" GAS	30 l/min 8 gpm	500 bar 7250 psi
<b>VU12-SP</b>	1/2" GAS	50 l/min 13 gpm	500 bar 7250 psi
<b>VU34-SP</b>	3/4" GAS	90 l/min 24 gpm	350 bar 5000 psi
<b>VU10-SP</b>	1" GAS	150 l/min 40 gpm	350 bar 5000 psi



Dimensioni Dimensions	L	E
<b>VU14-SF</b>	55	ES. 19
<b>VU38-SF</b>	60	ES. 24
<b>VU12-SF</b>	70	ES. 27
<b>VU34-SF</b>	85	ES. 36
<b>VU14-SP</b>	55	ES. 19
<b>VU38-SP</b>	60	ES. 24
<b>VU12-SP</b>	70	ES. 27
<b>VU34-SP</b>	85	ES. 36
<b>VU10-SP</b>	100	ES. 41

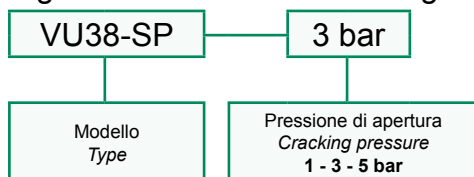
Pressione di apertura  
*Cracking pressure*

<b>1 bar</b>	<b>14.5 psi</b>
<b>3 bar</b>	<b>43 psi</b>
<b>5 bar</b>	<b>72 psi</b>

Dati e tarature ottenuti usando olio con viscosità 30 cSt a 50°C  
*Performances and calibrations are carried out by using hydraulic oil with 30 cSt viscosity at 50°C*

Viscosità consigliate Recommended viscosity	10 ÷ 420 cSt
Temperature di lavoro Working temperature	-20 ÷ +90 °C
Filtrazione assoluta Absolute filtration	25 µ

Sigla di ordinazione / Ordering code



I dati non sono impegnativi, **CBF** si riserva di apportare modifiche senza preavviso.  
*The specifications are not binding, CBF reserves the right to introduce modifications without notice.*