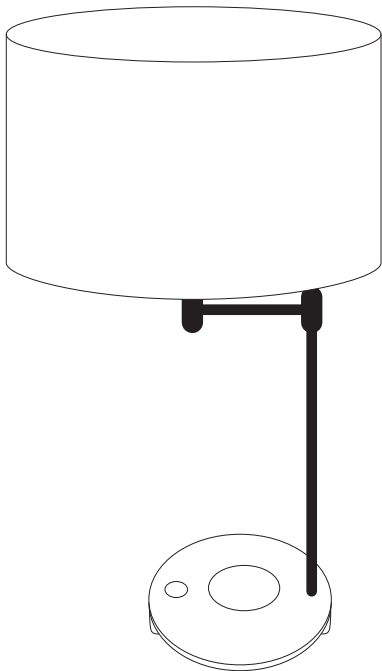


LampChargeQi

MACALLY

Wireless Charging Table Lamp

User guide



USER GUIDE

Thank you for purchasing the Macally LAMPCHARGEQI.

The Macally LAMPCHARGEQI wireless charging LED table lamp is designed to provide light at your table, desk and nightstand while keeping your mobile devices fully charged.

This clever lamp doubles as a charger and features two separate ways to charge your mobile devices. You can easily charge your Qi-certified smartphone wirelessly (up to 10W) by placing it on the wireless charging pad on the wide base of the lamp. Wide enough to fit any plus size smartphone!

You can charge two devices at the same time at full capacity as it also has a USB port (5V, 2A) on the front side of the base to quickly charge your smartphone, tablet and any other USB powered device.

The lamp has a built-in LED (3000K) with a long lifespan and better LED energy efficiency compared to traditional lighting solutions. This is important as we continue to become increasingly conscious of our ecological footprint. Conveniently, you can dim the light to adjust it to your mood, from ambient light to direct light that brightens up your room!

About this guide

Before you start using the Macally LAMPCHARGEQI, be sure to read this guide in its entirety.

Safety instructions

Please read the following carefully before using this Macally product. Incorrect use of this product may result in reduced performance, permanent damage and void warranty:

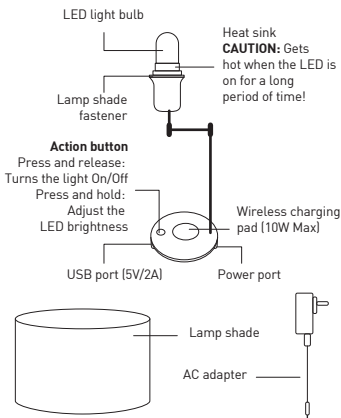
- Do not place this product near a heat source.
- Operating Temperature: 5°C to 40°C
- Non-Operating Temperature: 0°C to 60°C
- Operating Humidity: 5% to 90% (Non-condensing)
- Non-operating Humidity: 5% ~ 90 % (Non-condensing)

- Do not place this product near moisture nor liquids.
- Do not drop this product.
- Do not dispose this product in the garbage. Take it to your local recycling centre.

Package contents

- Lamp base
- Lamp shade
- AC adapter (5ft 12V/2A)
- User guide

Hardware basics



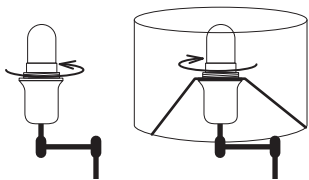
Important notes

- Do not place any metallic objects on the wireless charging pad.
- Before placing your device on the wireless charging pad, please remove any protective case with a ring, pop socket, credit card holder and any metal plate from your Smartphone. Failing to do so can cause serious damage to your Smartphone and charger!

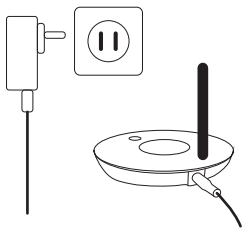
How to setup the LAMPCHARGEQI

Before installing the LAMPCHARGEQI make sure to remove the plastic film from the lamp shade.

1. Unscrew the lamp shade fastener, attach the lamp shade and screw the fastener back into place.



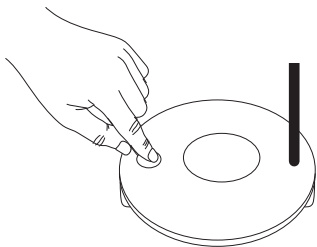
2. Plug the power cable into the power port of LAMPCHARGEQI and the AC adapter into a wall outlet.



Controlling the LED lighting

Press and release the on/off button to turn the light on/off.

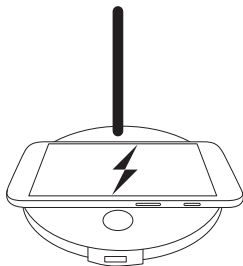
Press and hold the on/off button to adjust the LED brightness.



Wireless charging

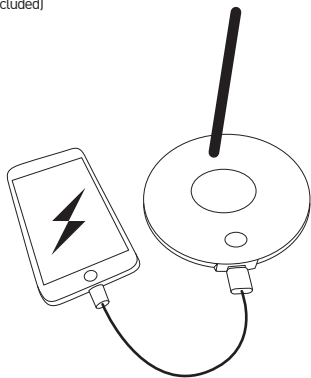
Center and place your Qi-enabled smartphone on the wireless charging pad and your smartphone will automatically start to charge.

Note: If the battery of your smartphone is completely empty, it may take a few minutes before your smartphone starts charging.



USB charging

Connect your smartphone, tablet and any other USB powered device to the USB port (5V/2A) with a USB-Lightning or USB-Micro USB cable (not included)



Technical support

For tech support please call (909) 230-6888 or e-mail us at techsupport@macally.com. Tech support hours are from 8:30 AM to 5:30 PM Monday through Friday (Pacific Standard Time).

FAQ & help - <https://help.macally.com/help>

Manual and driver download

<https://us.macally.com/pages/drivers-and-downloads>

Warranty

Macally Peripherals warrants that this product will be free from defects in title, materials and manufacturing workmanship for two years in North America from the date of the purchase. If the product is found to be defective then, as your sole remedy and as the manufacturer's only obligation, Macally will repair or replace the product. This warranty is exclusive and is limited to the Macally LampChargeQi. This warranty shall not apply to products that have been subjected to abuse, misuse, abnormal electrical or environmental conditions, or any condition other than what can be considered normal use. The liability of Macally Peripherals arising from this warranty and sale shall be limited to a refund of the purchase price. In no event shall Macally Peripherals be liable for costs of procurement of substitute products or services, or for any lost profits, or for any consequential, incidental, direct or indirect damages, however caused and on any theory of liability, arising from this warranty and sale. These limitations shall apply notwithstanding any failure of essential purpose of any limited remedy.

MACALLY
