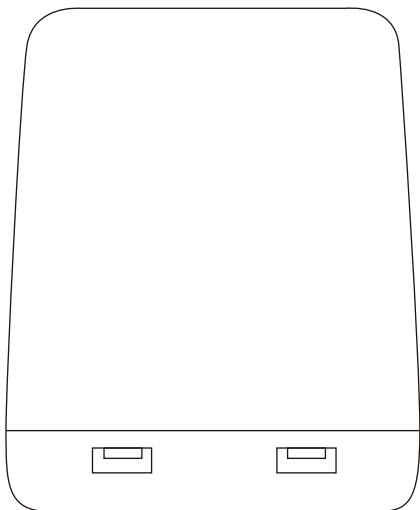


LAMPCHARGESQ

MACALLY

NIGHTSTAND LED LIGHT WITH USB CHARGER

User guide



USER GUIDE

Thank you for purchasing the Macally LAMPCHARGESQ. The LAMPCHARGESQ is a LED light charging station with a stylish wood effect bottom finish. The built in LED light is touch controlled and offers a warm soft white light (2700K) -convenient for reading- and three stages of brightness (Dim, Mid and Bright). The 4 USB ports with Smart IC (5V/4.8A) allow you to quickly and efficiently charge your smartphone, tablet or any other USB powered device. Fully certified, it keeps your light and devices safe with surge protection, temperature control, short-circuit protection and over-current protection. The Macally LAMPCHARGESQ is the perfect LED light charging station to put on a nightstand in your bedroom, a side table or side board in the living room or on a desk in your study or office.

About this guide

Before you start using the Macally LAMPCHARGESQ, be sure to read this guide in its entirety.

Safety intructions

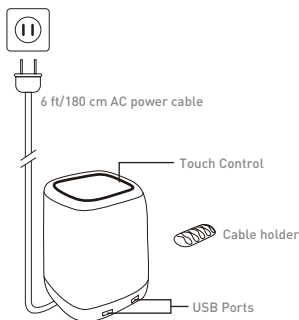
Please read the following carefully before using this Macally product. Incorrect use of this product may result in reduced performance, permanent damage and void warranty:

1. Do not place this product near a heat source.
2. Operating temperature of 5°C to 40°C. Storage temperature of 0°C to 60°C.
3. Do not place this product near moisture nor liquids.
4. Operate and store at humidity of 5% to 90% (non-condensing)
5. Do not place heavy objects on this product.
6. Do not drop this product.
7. Do not dispose this product in the garbage. Take it to your local recycling centre.

Package contents

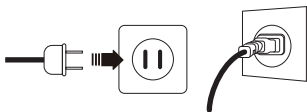
- LAMPCHARGESQ
- User guide

Hardware basics

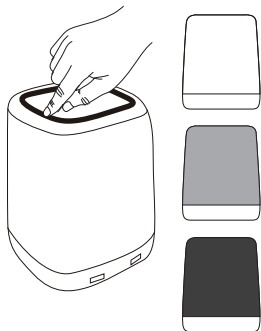


Installation instructions

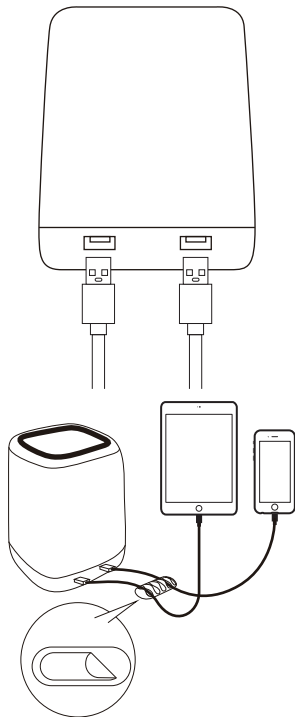
Plug the AC power cable into your wall outlet and place it on top of your table, desk, etc.



Tap the touch control ring to turn the LED on and to cycle through the 3 LED brightness levels. You can also tap-and-hold it to turn it off and preserve the current brightness level for the next time it's turned on.



To charge your smartphone or tablet, simply connect the devices USB cable to any of the side USB ports on the LAMPCHARGEQ.



Technical support

For tech support please call +1 909 230 6888 or e-mail us at techsupport@macally.com. Tech support hours are from 8:30 AM to 5:30 PM Monday through Friday (Pacific Standard Time).

Warranty

Macally Peripherals warrants that this product will be free from defects in title, materials and manufacturing workmanship for one year in North America from the date of the purchase. If the product is found to be defective then, as your sole remedy and as the manufacturer's only obligation, Macally will repair or replace the product. This warranty is exclusive and is limited to the Macally LAMPCHARGEQ. This warranty shall not apply to products that have been subjected to abuse, use, abnormal electrical or environmental conditions, or any condition other than what can be considered normal use. The liability of Macally Peripherals arising from this warranty and sale shall be limited to a refund of the purchase price. In no event shall Macally Peripherals be liable for costs of procurement of substitute products or services, or for any lost profits, or for any consequential, incidental, direct or indirect damages, however caused and on any theory of liability, arising from this warranty and sale. These limitations shall apply notwithstanding any failure of essential purpose of any limited remedy.

MACALLY