

MACALLY

22 key Bluetooth numeric keypad for Mac/PC

User's Guide

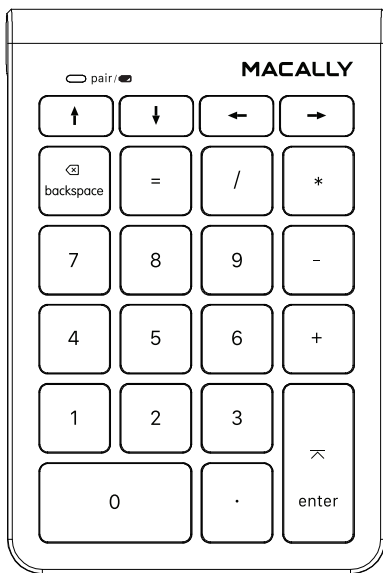


Table of Contents

Introduction	1
Package Contents	1
System Requirements / Technical Support	1
Macally Product Information	1
Hardware Basics	3
Pairing the keypad with Mac	4
Pairing the keypad with PC	6

Introduction

Thank you for purchasing the Macally product. The Macally BTNUMKEY22, 22 key numeric keypad, allows professionals to efficiently enter long sequence of numbers in spreadsheets, accounting programs, calculators and increase their productivity. The Macally BTNUMKEY22 is very easy to use. Simply pair it with your computer (no software required!) and you are ready to go.

Before you begin using this product, be sure to read this user's guide in its entirety.

Package Contents

- BTNUMKEY22
- 1 AAA battery
- User's Guide

System Requirements

- Any Mac or PC computer with a Bluetooth host
- Mac OS X v10.6 to Mac OS X v10.12 and above
- Windows 7/8/10

Macally Product Information

Technical Support

Please E-mail us at techsupport@macally.com, or call us at 1-909-230-6888 Monday to Friday, 8:30AM to 5:30PM, Pacific Standard Time

Macally Product Information

This manual is furnished under license and may be used or copied only in accordance with the terms of such license.

Except as permitted by such license, no part of this publication may be reproduced, stored in a retrieval system, or transmitted, in any form or any means, electronic, mechanical, recording, or otherwise, including translation to another language or format, without the prior written permission of Macally Peripherals.

The content of this manual is furnished for informational use only, is subject to change without notice, and should not be construed as a commitment by Macally Peripherals. Macally Peripherals assumes no responsibility or liability for any errors or inaccuracies that may appear in this book.

Macally is a trademark of the Mace Group, Inc. All other product names, trademarks and registered trademarks in this document are the property of their respective holder.

Copyright® 2018 by Macally Peripherals

FCC Information

This device complies with part 15 of the FCC Rules. Operation is subject to the following two conditions: (1) this device may not cause harmful interference and (2) this device must accept any interference received, including interference that may cause undesired operation.

Warranty

Macally peripherals warrants that this product will be free from defects in title, materials and manufacturing workmanship for one year from the date of purchase. If the product is found to be defective then, as your sole remedy and as the manufacturer's only obligation, Macally will repair or replace the product. This warranty shall not apply to products that have been subject to abuse, misuse, abnormal electrical or environmental conditions, or any condition other than what can be considered as normal use.

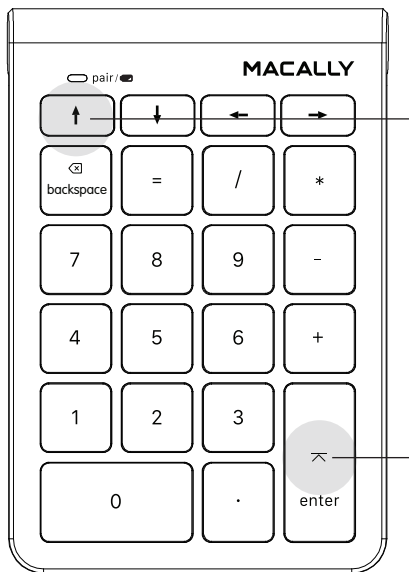
Warranty Disclaimers

Macally Peripherals makes no other warranties, express, implied or otherwise, regarding the BTMLUXKEY, and specifically disclaims any warranty for merchantability or fitness for a particular purpose. The exclusion of implied warranties is not permitted in some states and the exclusions specified herein may not apply to you. This warranty provides you with specific legal rights. There may be other rights that you have which vary from state to state.

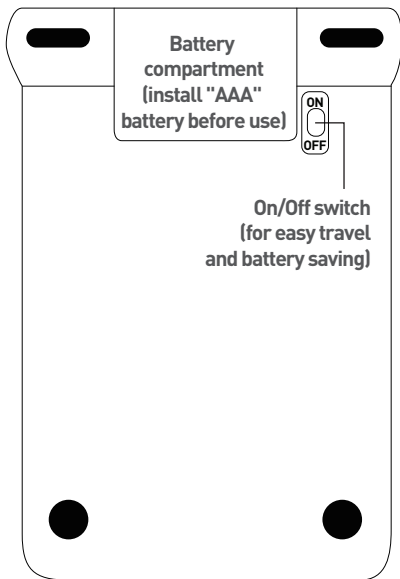
Limitation of Liability

The liability of Macally Peripherals arising from this warranty and sale shall be limited to a refund of the purchase price. In no event shall Macally Peripherals be liable for costs of procurement of substitute products or services, or for any lost profits, or for any consequential, incidental, direct or indirect damages, however caused and on any theory of liability, arising from this warranty and sale. These limitations shall apply notwithstanding any failure of essential purpose of any limited remedy. V1.1.

Hardware Basics

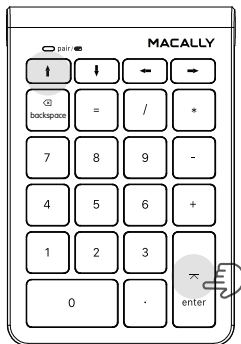


Pairing keys: press enter and up arrow keys simultaneously until "pair" LED blinks in green to start pairing before first time use



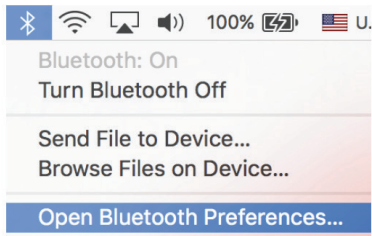
Pairing the keypad with Mac

1. Press enter and up arrow keys simultaneously to set keypad in pairing mode, the LED flashes green

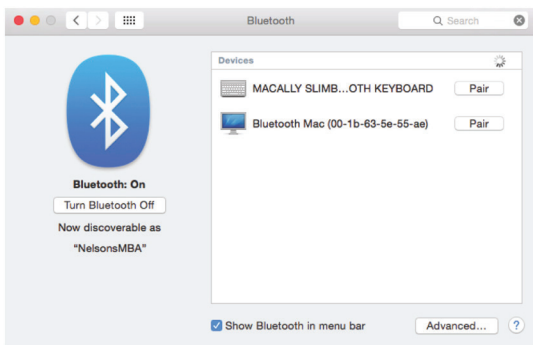


2. Please click the Bluetooth icon in your computer's menu bar located in upper right corner of your screen.

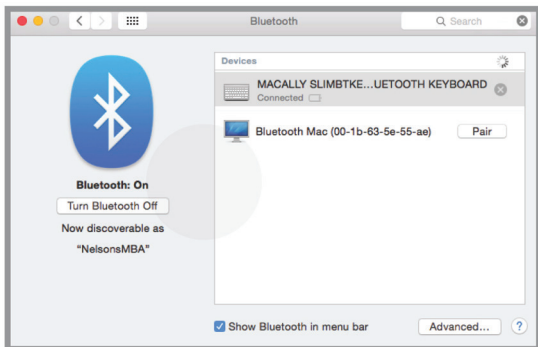
Make sure Bluetooth is turned to On then select "Open Bluetooth Preferences ..." in the drop down menu.



3: Bluetooth window displays a found Macally Bluetooth keypad, please click on the "Pair" or "Connect" button next to it.

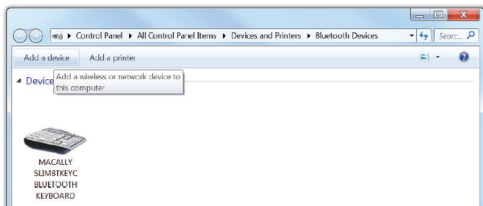


4: Once pairing is finished, the Bluetooth keypad shows "Connected" status.

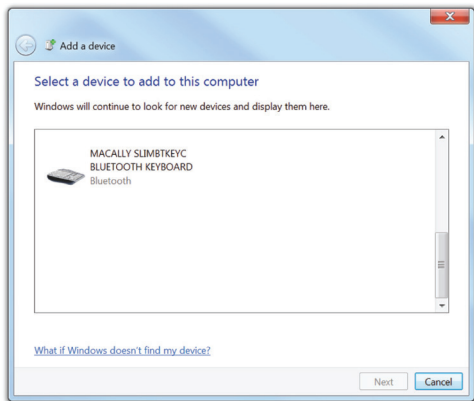


Pairing the keypad with your Windows PC

1. Press enter and up arrow keys simultaneously to set keypad in pairing mode, the keypad LED flashes.
2. In Windows PC, go to Devices and Printers and select Bluetooth Devices.
3. Click "Add a device" at the top left corner like shown in the picture.



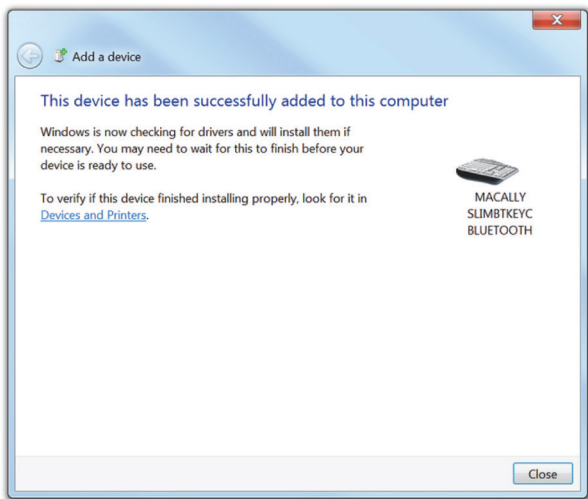
4. Once you see the Macally Bluetooth Keypad appear, select it and press "Next"



5. After a short period, Windows will show the following screen indicating that the keypad is now paired with the computer.

Any necessary drivers will install automatically.

Please note that the driver installation may take a few minutes. Windows will notify you when the keypad is ready to use.



Please note that if you are using a different Windows OS version, your screen may differ from the above diagrams.