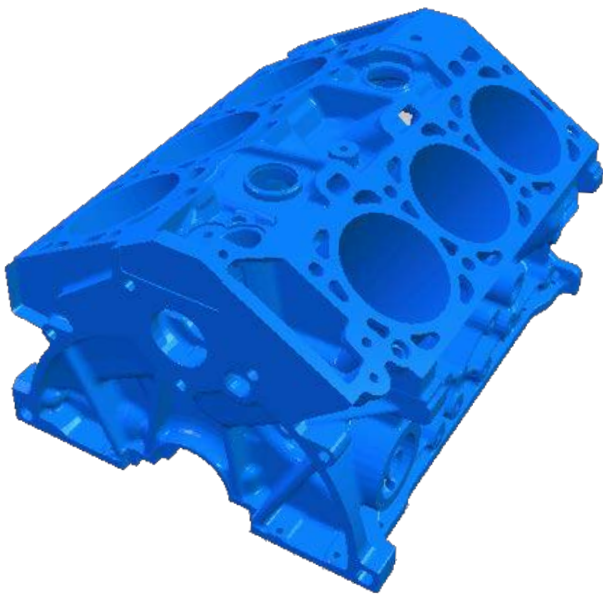


Duplicator 5S

Large Format Desktop 3D Printer



Printer Specifications

Print Technology	Fused Filament Fabrication (FFF)	Printer Frame Dimensions	Length 400mm Width 460mm Height 860mm
Build Capability	305*205*575 mm (~ 12*8*23 in)	Shipping Box Dimensions	Length 510mm Width 570mm Height 970mm
Layer Resolution	20 microns (0.02 mm)	Printer Weight	35kg(77lbs)
Position Precision	X 12.5 microns Y 12.5 microns Z 5 microns	Printer & Contents Weight	44kg(96lbs)
Filament diameter	3MM +/-0.15mm	AC Power Input	100-240V 4 AMPS 50-60Hz 200Watt max
Nozzle diameter	0.4 mm	Power Requirements	24V DC @9.2AMPS
Print speed	30mm/s-300mm/s	Connectivity	SD Card USB cable (firmware updates)
Travel speed	30mm/s-350mm/s	Average Operational Noise	48dBA
Software Package	Wanhao Maker	Ambient Operating Temperature	10°- 38°C
File Type	STL, .i file	Storage Temperature	0° - 40°C
Compatible OS	Microsoft Windows (XP32 bit/7+) Apple Mac (10.6 64bit+ via Virtual Software)		
Nozzle Temperature Range	180°- 260°C		