

# CRAB CAT TREE

## READ BEFORE YOU START

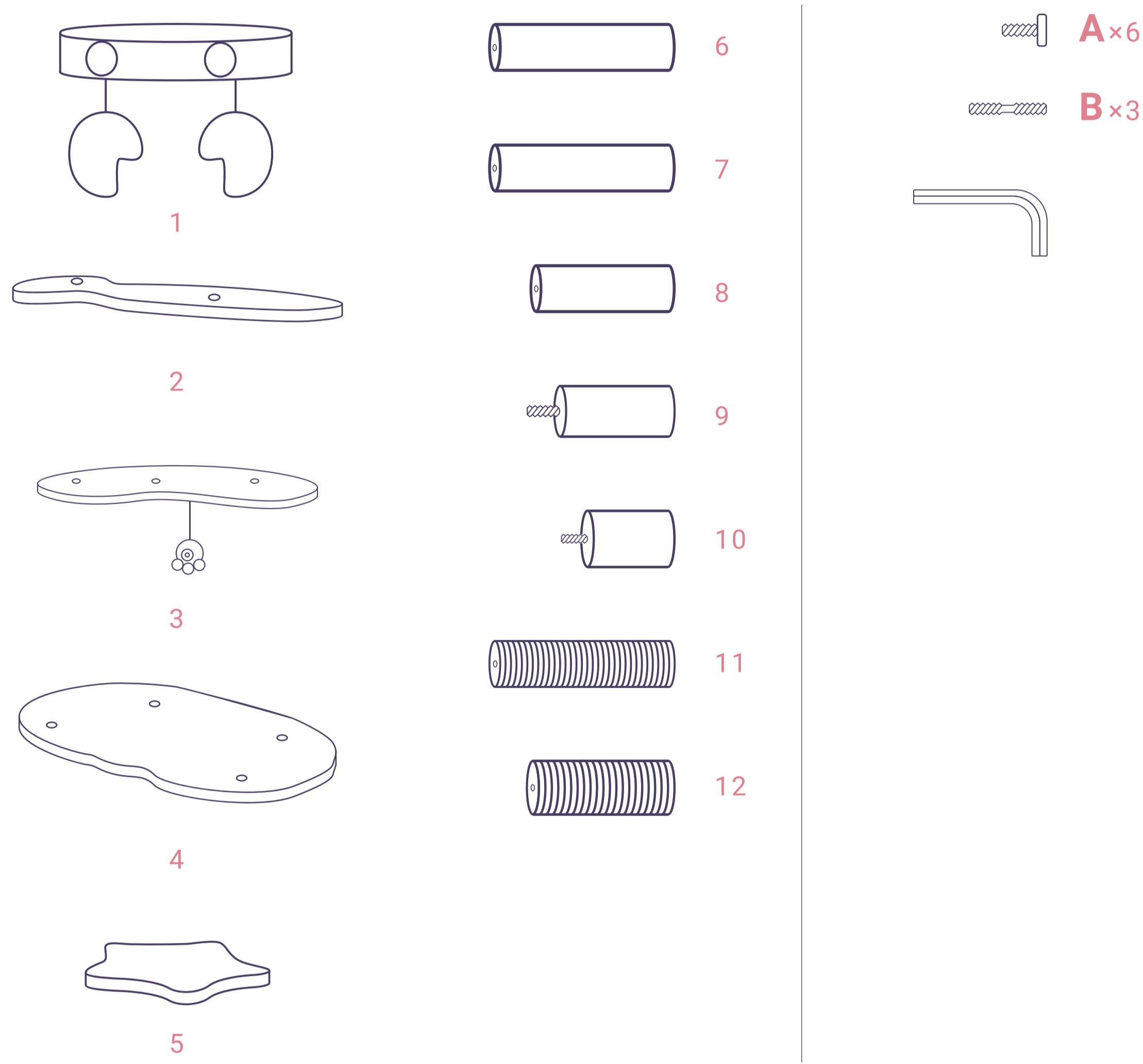
Please identify and sort all components shown below.  
For any issues during installation, please ask for assistance at [service@happyandpolly.com](mailto:service@happyandpolly.com) or check our YouTube Channel [https://www.youtube.com/channel/UCbPD98rZ-jOYrTCQA\\_0eNLg](https://www.youtube.com/channel/UCbPD98rZ-jOYrTCQA_0eNLg).

## SAFETY GUIDELINES TO PREVENT INJURIES

- This cat tree is intended for CATS, not to be sat on by human babies.
- Care should be taken when unpacking the product.
- Keep small objects away from children and pets.
- Follow instructions accordingly, make sure all steps are accomplished.
- NEVER climb, shake, step on, or hang on the product.
- Keep the cat tree indoors and away from direct sunlight or damp areas.
- Always operate this cat tree on a flat, level, and stable surface.
- Examine the cat tree frequently for damaged, missing, or loose parts.
- Discard if the cat tree is torn or damaged.
- Contact our customer service for any damaged parts within two months.

## IMPORTANT

- Please identify and sort all components shown below.
- All pictures shown are for illustration purposes only. The actual cat tree may vary due to product enhancement.



## ASSEMBLY INSTRUCTIONS

