

Maple Systems Product Brochure

Your Experts in Automation
Control Solutions



- HMI
- HMI + PLC Combo (HMC)
- Remote HMI
- Open HMI
- Panel PC
- Alphanumeric OIT



As a leader in operator interface products since 1983, Maple Systems looks forward to providing you with quality, affordable control solutions.

Table of Contents

01 | Executive Message

03 | Company Profile

04 | HMI

08 | HMI + PLC Combo (HMC)

12 | Remote HMI

14 | Open HMI

16 | Panel PC

18 | Alphanumeric OIT

20 | Support



Message from the Executive Team

For more than three decades, Maple Systems has proudly provided solutions for the automation and industrial controls marketplace.

Maple Systems first began as a systems integrator, and in building systems for others, saw a great need for lasting and innovative control products. We entered the marketplace by creating some of the first operator interface terminals for companies requiring embedded control systems.

Since then, our focus has expanded to supplying an array of control solutions: HMIs, Panel PCs, HMI + PLC combo units, and more. Our goal is to enable our customers to meet their diverse set of needs by providing them with quality products and a quality customer experience.

In 2015, Maple Systems became an employee-owned company. This is an exciting time for us! Five simple pillars influence every aspect of our company:

- **Quality** in our job and the products we provide
- **Respect** for our customers and fellow owners
- **Pride** in our work and ability to meet customer needs
- **Accountability** for the results of our work
- **Attitude** of positivity and possibility

Because of this key foundation, each owner has a personal investment in providing the highest level of customer satisfaction. Many of our “new” owners have been with the company long-term, offering insight as to why quality has and will continue to endure at Maple Systems. Our employee ownership and governing management team will ensure that Maple Systems effectively supports our customers well into the future.

Our mission is to be recognized in the industrial market as the preferred supplier of industrial control and automation products. Maple Systems will continue to achieve this by implementing a philosophy of high-quality, affordable prices, and continuous improvement.

**For more than 30 years,
our focus has been
supplying innovative
control solutions.**

Executive Team



Larry St. Peter
President and CEO



Sarah Davis
Executive Vice
President



Daunne O'Farrell
Vice President of
Finance



Sam Schuy
Vice President of
Engineering



Andre Zins
Vice President of
Manufacturing



Maple Systems, Inc.
Your Industrial Control Solution.



Company Profile

Maple Systems Specializes in Operator Interface Solutions

At Maple, we are committed to quality, reliability, and affordability. Our products deliver the quality you deserve, the reliability you demand, with a value that will drive your growth. Whether your customers are residential, commercial, or industrial; whether you create custom automation and integration solutions or manufacture products that require 21st century control, Maple Systems will add value and improve your user experience.

We Make Machine Control Easy

With modern touchscreens, unrivaled value and functionality, combined with intuitive software, Maple Systems provides a versatile offering of products to complement your machine's design:

- Touchscreen HMIs
- HMI + PLC units
- Remote HMIs
- Open HMIs
- Panel PCs
- Text-Based Alphanumeric OITs

Best-Value Products

Our goal is to offer high-quality control solutions at affordable prices. We strive for continuous product improvement by being experts in our field, employing the latest technologies, and ensuring that every product is fully tested and inspected before leaving our facility. Paired with an outstanding support team and comprehensive technical website, you'll see that Maple Systems truly is your industrial control solution.

Contact Us Today

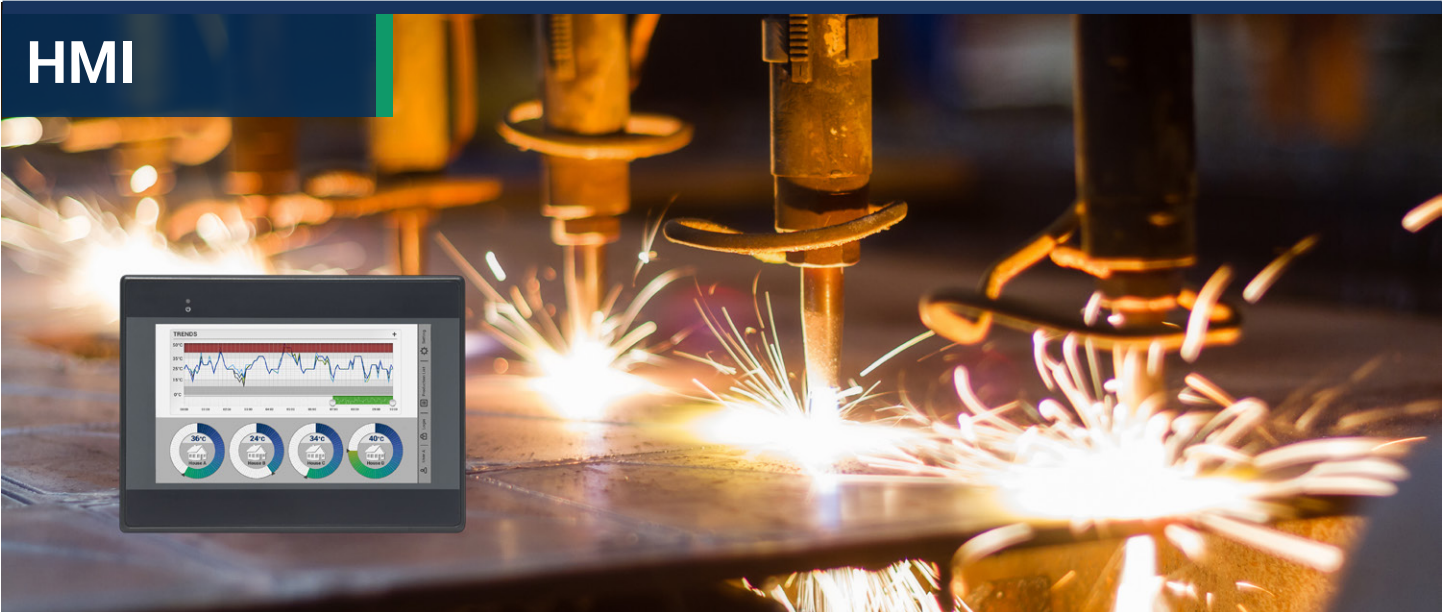
We invite you to explore our product offerings and contact us to discuss how Maple Systems can help solve and support your automation and control needs:

Phone: 425-745-3229

Email: info@maplesystems.com

Web: www.maplesystems.com





Overview

Maple Systems HMIs offer affordable, quality solutions for any control process.

Packaging, food and beverage, oil and gas, medical—No matter the industry, our HMIs streamline your process, offering new possibilities, top quality, and reliability.

Our HMIs complement any machine design and are available in sizes ranging from 4.3 inches to 15 inches.

Benefits

HMI Solutions for Every Machine

Maple Systems HMIs offer the best value in today's HMI marketplace with benefits including modern touchscreens, intuitive software, and great functionality. Enjoy enhanced features, trusted performance, affordable pricing, and unparalleled support to meet your most demanding automation needs.

Bright Displays

Maple Systems HMIs are some of the most featureful, yet least expensive HMIs in the industry. With bright colorful displays, enjoy up to 16 million colors for crisp, vivid graphics.

Architecture

Powered by the latest generation of microprocessors, our HMIs set impressive benchmarks for boot speed, graphic file display speed, and PLC data read/write speed, whether interfacing with a single PLC, or multiple PLCs and devices.

Maple Systems HMIs are used worldwide for diverse applications and are designed to meet your most demanding automation needs.



HMI Series

Features

Rugged. Reliable. Versatile.

Maple Systems HMIs deliver a smooth, responsive experience, increased memory, and faster refresh rates - all at affordable prices.

High-Quality Enclosures

Many Maple Systems HMIs offer durable plastic enclosures to provide protection from daily operation wear and tear. Select models offer anti-corrosive aluminum enclosures for added strength and durability, providing protection against harsh industrial environments.



Designed for Harsh Environments

- PCB coating protects internal circuitry from corrosion
- Aluminum enclosure available
- Screen protectors available for added durability
- IP65 / NEMA 4X compliant
- CE, UL, and RoHS certified

Class I, Division 2

Maple Systems also carries Class I, Division 2 HMIs, safe for use in hazardous environments where exposure to explosive gases, liquids, and vapors may occur.



USB, SD, and Internal Memory Storage

Maple Systems HMIs are an excellent tool for data storage (historical trending, alarms, etc.) via both internal and external memory. Our HMIs possess internal memory dedicated for alarm and data storage. Export PLC trending and alarm data to external USB Flash drives or an SD card.

Communication

Maple Systems HMIs offer scalability to meet the requirements of projects large and small. With the speed and capability to communicate with multiple devices via serial and Ethernet connections, what you control is limited only by your imagination. Connect a variety of devices (PCs, printers, barcode scanners, PLCs, mobile devices, etc.) utilizing Ethernet, USB, and serial ports.

In addition, connect multiple HMIs together via Ethernet, taking advantage of simultaneous access and interaction amongst all PLCs in your local network.

Serial Communication

Connect a wide variety of peripherals and download/upload our HMI configuration software. Maple Systems HMIs possess up to 3 serial connections enabling linking to multiple PLCs using different drivers. CANBus, RS485 2/4W, and RS232 are supported.



Protocols

Our HMI configuration software possesses all of the communication drivers you need. Unlimited tags and multiple protocols are supported at no extra cost – and there are no fees for runtime licenses. Maple Systems HMIs offer versatile support of 150+ controllers and are compatible with the biggest names in PLCs:

- Allen Bradley
- Schneider Electric
- Siemens
- Mitsubishi
- Omron
- Koyo
- GE
- Emerson
- Modbus RTU
- Modbus TCP/IP
- Toshiba
- Wago
- Yaskawa
- And more



**When you think
HMIs, think
Maple Systems**

HMI



Features

Quality. Affordable. Dependable.

Isolated RS-485

Built-in isolation of the RS-485 port improves communication reliability, effectively avoiding the ground potential difference, ensuring your HMI functions safely in any complicated grounding environment.

Backup Data Files Via Ethernet

High-speed Ethernet connectivity yields quick HMI programming, offering communication with multiple devices for ultimate flexibility. Remotely back up trending, alarm, and recipe CSV files to a PC via Ethernet connection. In addition, schedule automatic backups, and trigger backups from your PLC.

Data Logging

Data logging files can be created for a batch process, daily run, or multiple days.

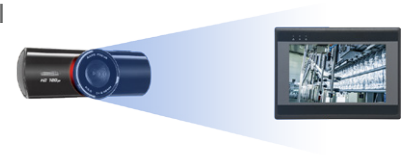
- Capture data based upon time or triggered events
- Store data and screen shots in the HMI
- Display data as historical events, alarms, trends, recipes, or as a simple spreadsheet

Operation Log			
Time	Class	Action	
08:49:30	A	Log In	
09:01:00	A	Change Window	
10:19:47	A	Change Window	
13:12:22	F	Set ON	
13:33:12	A	Change Window	
16:30:21	F	Log Out	
16:40:34	A	Log Out	

Data log files can be backed up from the HMI to a networked server, sent from the HMI via email, uploaded via the HMI's built-in FTP server, or saved to USB disk.

Video Monitoring

Two video inputs are available on select HMI models. Connect video cameras to provide visual feedback of the plant floor. Capture still images off the live feed, pause, or resume with onscreen buttons. Some models support video input via USB.

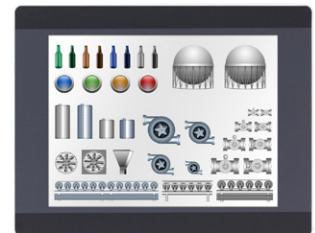


Recipes

The recipe feature creates presets in the HMI for different batch processes. Manage batch processes and easily select different batch variables to download to the PLC. Multiple recipes or values can be used to attain desired results — all with one click of a button.

Images Enhance Experience

With Maple Systems HMIs, import versatile color graphics to enhance your application and demonstrate status. Expand your library to include project specific imagery including logos, photos, drawings, diagrams, etc. Accepted files include .jpg, bitmaps, .png, .svg, .dpd, and animated .gifs.



HMI

Powerful, Easy-to-Use

Maple Systems HMIs are utilized in almost every industry - oil and gas, food and beverage, design, packaging, and more.

Data Display

Maple Systems HMIs offer flexibility in choosing how to display your process data. Select from a variety of methods to display data in the PLC including:

- Numeric display
- ASCII display
- Bit lamps and switches
- Bar graphs
- Analog meters
- Trend displays
- Historical data displays
- XY plots
- Data blocks



Easy Configuration

Maple Systems HMIs program easily using our configuration software. Features include:

- Extensive graphic libraries
- Enhanced security
- Macros
- Offline/online simulation
- Advanced protocol support
- Pass-through PLC programming
- Multiple ways to upload/download projects



Impressive Alarm Capabilities

Manage alarm logistics with ease:

- Organize alarms into categories
- Display and save time-stamped histories
- Import and export alarm data
- Watch alarms via scrolling marquee
- Send email notifications to designated recipients

Meters and Gauges

Analog-style meters allow you to present data including temperature, current, pressure, speed, etc. in a functional, aesthetic manner. Our configuration software offers many options to customize your screen with 0 to 360 degrees of start-stop ranges on circular gauges and meters. Customize colors for background, frame, needle, and tick mark.



Choose from different needle style types and optional tick marks to show calibration or measurement. High-Low-Normal range limits can be set for further customization.

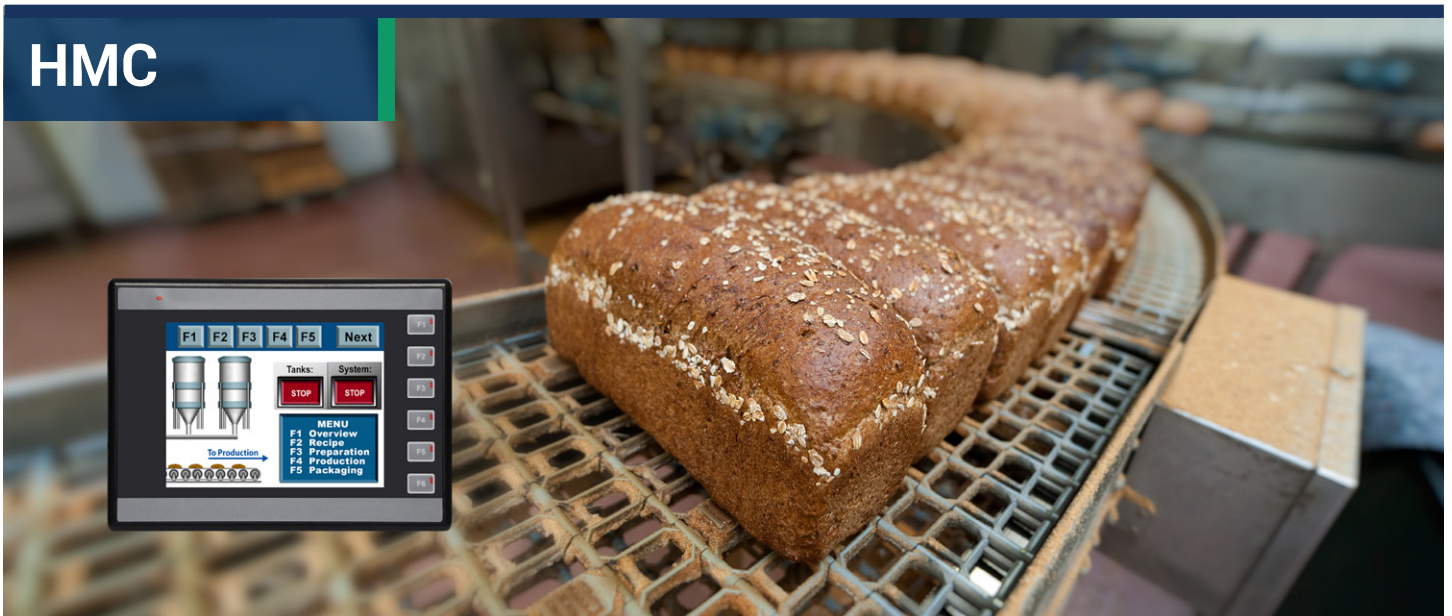
Security

Maple Systems configuration software offers complete operational and project security. Prevent unauthorized access to projects, screens, or objects using alphanumeric passwords. Add/delete accounts, modify privileges, or reset passwords during HMI operation.

Utilize a USB security key to log in users when the key is connected to the HMI. USB security keys take the place of a mag strip or RFID reader and other access control systems.



Enjoy quality,
affordable HMI
solutions



Overview

Maple Systems HMCs combine an HMI and PLC into one powerful unit.

Utilized worldwide to employ diverse applications, our HMCs lower costs, save space, and feature options including: touchscreen and function key models, serial and Ethernet communication, support for Class I, Division 2 installations, and numerous I/O configurations.

What's more, HMCs provide an excellent combination of display and control in a single, easy-to-use package.

Benefits

HMI + PLC Combo Units

Maple Systems HMCs merge the functionality of a controller and an HMI into one unit. HMCs provide visual feedback and direct access of automation control systems on the factory floor, or anywhere an operator interface is needed. HMCs connect to various input devices (pushbuttons, proximity switches, sensors) and output devices (actuators, motors, valves) using modular or built-in I/O, all under internal program control. This all-in-one control solution eliminates the need to purchase a separate HMI and PLC, saving space and money.

Multiple Display Options

Maple Systems HMCs offer multiple display options to meet a variety of project needs:

- Tri-color function key only displays
- Touchscreen-only displays
- Touchscreen displays with function keys

An HMC combines an HMI (display) and a programmable logic controller (PLC) into one powerful, functional unit.



HMC Series

Features

One Unit. Excellent Display + Control

Build a HMC according to your specifications by attaching plug-in modules to the unit's expansion ports.

Tri-Color Function Key Models

- 3" tri-color LCD displays
- Twelve numeric keys for operator input
- Screen colors: red, green, and blue, or mix the primary colors on-screen to create yellow, purple, and white color options.
- Class I, Division 2 rated



Touchscreen Displays

Touchscreen-only models have vivid displays with long-lasting touchscreens, making your screens visually engaging. Product features include:

- 4.3" – 7" displays
- Analog touchscreens
- 32 thousand colors for bitmaps
- 50,000 hour LCD life at 25°C
- Class I, Division 2 rated



Touchscreen Displays with Function Keys

Maple HMCs possess precision analog touchscreens with infinite touch response points, allowing you to place touch objects at a desired location. Some HMC models have user-defined function-keys which are used in combination with the display and touchscreen to expand functionality.

Product highlights include:

- 3.5" - 5.7" displays
- Long-lasting, vivid color displays
- Each unit features six function keys that can be customized for critical commands and data
- Analog touchscreen
- 32 thousand colors for bitmaps
- 50,000 hour LCD life at 25°C
- Class I, Division 2 rated

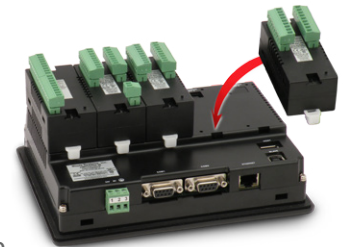


Input/Output Expansion Modules

The HMC series offers many I/O module options including analog, digital inputs and outputs. You can also use digital modules with analog modules in the same unit or mix and match modules. Each module contains its own processor in addition to the CPU of the HMC.

Select any combination of modules to suit the unique requirements of your project. Some HMCs accept up to three modules while others accept up to five modules. Digital inputs are bi-directional (sink or source). Outputs support sink (NPN), source (PNP), or relay contacts. The analog I/O modules support voltage (-10V to +10V, or 0 to 10V) and current (0 to 20mA, or 4 - 20mA) modes, as well as thermocouple or RTD inputs.

HMCs possess input/output modules (or built-in I/O) that are used to interface with your system. Utilize Ladder Logic to monitor the inputs and respond by changing the outputs to provide control and greatly reduce development time.



HMI + PLC = HMC
Your all-in-one
control solution



Features

Versatile. Easy-to-Use.

Independent LEDs

Our HMCs possess user-defined keys with LED indicator lights — perfect for loud, noisy environments where you require additional feedback. The LED light on a function key shows the status of that key. You may also assign LEDs to act independently of the function keys, or as a status indicator.



USB

Every HMC model has a USB port for uploading/downloading projects from your personal computer. A flash drive can also be used. Some units possess an additional USB port to record important data and store it on a flash drive.

Connectivity

The HMC itself is a single control solution but if you require communication to another PLC, HMI, or motion controller, every HMC has a serial port to communicate to your favorite PLC or printer. The PLCs do not need to use the same communication drivers. Some models possess Ethernet connectivity by supporting Modbus master and slave over Ethernet (10/100 MB/S).



Ladder Logic

Ladder Logic programming language offers more than one hundred Logic Block instructions (commands used to create complex routines) for a variety of tasks.

Ladder Logic Block instructions include routines for:

- Inputs and Outputs
- Data Transfers
- Mathematical Operations
- Comparisons
- Logic Instructions
- Timers
- Counters
- Complex Functions
- Special Data Processing Functions (i.e., PID, digital filter, or moving average)



IEC Programming Environment

Accelerate your development cycle with an IEC 61131-3 compliant editor suite. Select from five easy-to-use, standardized logic editors to build flexible maintainable control applications. Create customized, modular, and re-usable logic with User Defined Function Blocks.

Features

Single Programming Environment

Powerful and easy-to-use, our single configuration software offers support for both the HMI and PLC program.

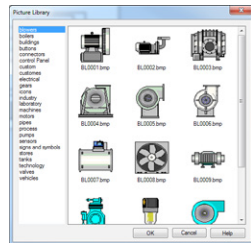
Class I, Division 2

Maple Systems HMCs are rated Class I, Division 2, safe for use in hazardous environments where exposure to explosive gases, liquids, and vapors may occur.



Extensive Graphics Libraries

Over 1000 industrial images and symbols are at your disposal to create customized screens for every project. Can't find what you need? Create custom graphics to meet your specific needs. The Multiple Language feature is also offered with true type fonts supported.



Data Entry

Use the pop-up ASCII Keypad to input alphanumeric data or the pop-up Numeric Keypad to input numeric data into a register. Create custom keypads to meet your specific needs.

Wide Selection of Custom Objects

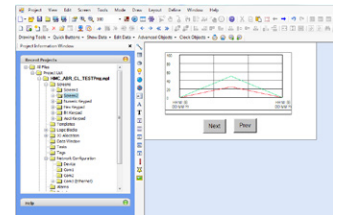
- Configure quick buttons or multi-task keys.
- Real-time and historical alarms available.
- Display meters or bar graphs for accurate data readings.
- Program and customize your own recipes utilizing pop-up screens.

Program Complex Tasks with Ease

- Assign multiple tasks to keys, buttons, or screens
- Simplifies complex steps for user
- Up to 50 programmable tasks
- Initiate tasks based on power-up, time, or event

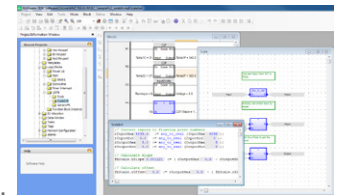
Capture and Display Data

- Display real-time and historical trends.
- Store data to a Flash drive or upload to a PC.
- Log data based on timed or triggered events.
- Simplify programming utilizing the Tag database.



Real-Time Monitoring

Maple Systems configuration software offers the ability to run your application in real-time on your HMC while simultaneously monitoring the ladder diagram on your PC. This important testing capability allows you to monitor and analyze the functionality of your application as it actually runs.



Offline Simulation Testing

Run your project in simulation mode, giving you the ability to test your project on the PC prior to downloading it to the HMC. The computer displays a copy of the HMC on-screen, simulating how your project will look and operate in the HMC.



**Powerful
Configuration
Software**

Remote HMI



Overview

RMI = Remote HMI. Maple Systems RMIs allow you to remotely monitor, control* and update your process from your local area network (LAN). Our Remote HMIs divide traditional HMIs into two parts: a data processing unit plus a separate visual display.

The data processing unit is a fully functioning HMI but possesses no display— it is the “brain,” or data processing center that allows you to monitor and control* your automation process via an approved RMI display.**

Benefits

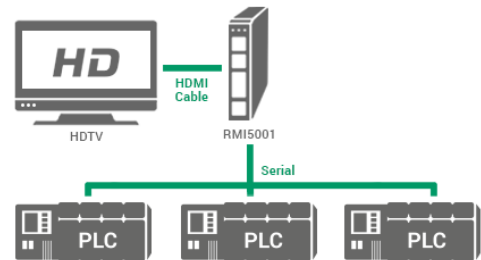
Moving Automation Forward

Maple Systems’ innovative RMI solutions offer communication between a variety of HDMI displays, wireless tablets, and smart phones.** Turn any HDMI-compatible TV or monitor into a large display via HDMI cable. Or utilize our capacitive RMI touchscreen display for a high-tech touch experience, enjoying the ability to swipe, pinch, and zoom. RMIs can communicate with other RMI displays, PLCs, motion controllers, inverters, and more.

Big-Screen Monitoring

The RMI5001 turns any HDMI-compatible TV or monitor into a large viewing display via HDMI cable, efficiently delivering crisp, high-definition graphics. Streamline processes by delivering real-time production data on a wall or ceiling-mounted display visible from the plant floor. Offering Ethernet, three serial ports, and convenient DIN rail mounting, this unit takes your process to the big screen with ease. The RMI5001 connects with HDMI-compatible displays including: monitors, flat-screen TVs, and projector screens.

RMIs are designed to connect to a PLC, HDMI-compatible TV, or wireless tablet.**



*Note: Maple Systems advises against remotely controlling any system/process which could cause injury/death to any person(s) or equipment, and does not assume liability for any damages which may occur as a result of such use.

**See approved devices, limitations apply.

Features

RMI = Data Processing Unit + Visual Display

Maple Systems RMIs can remotely back up trending, alarm, and recipe files to a PC over a local area network.

Remote Monitoring

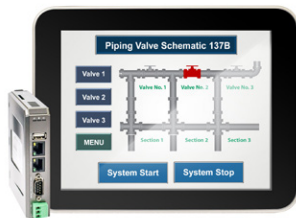
The RMI5010 can be used to monitor PLC operation and display information on an approved device connected to the local area network (LAN). This unit possesses no visual display.



The compact, robust RMI5010 allows you to connect to the RMI5090 via Ethernet, or an iPad/Android device via a router. The RMI5010 also provides communication to industrial controllers via Ethernet and serial connections.

High-Tech Touch Experience

The hardwired RMI5090 is a visual touchscreen display. It can only be paired with the RMI5010. This unit possesses a sleek, capacitive touchscreen with the ability to swipe, pinch, and zoom on historical data and trending objects. Durable 7H tempered glass and multiple certifications (UL, CE, RoHS, NEMA 4) ensure this unit will thrive in tough industrial environments.



Connect to One or More PLCs

Network multiple RMIs and PLCs via Ethernet, taking advantage of simultaneous access and interaction amongst all PLCs in your local network.

Viewer App

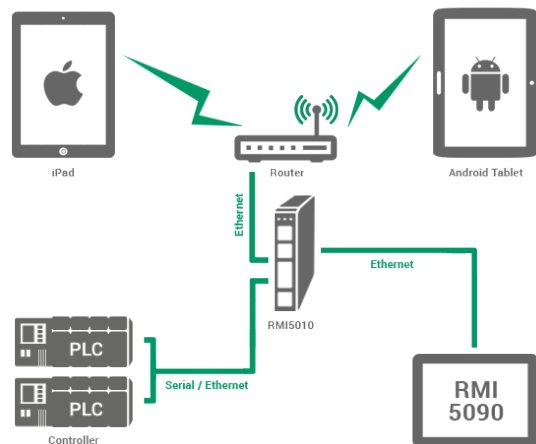
The cMT Viewer App is designed for the RMI5010, RMI5090, iPad, Android, and Windows OS, allowing you to quickly and easily monitor operational status of your machines. Rapidly monitor and switch between your most recent projects using cMT Viewer's user-friendly interface.



Easy Software Configuration

Maple Systems RMIs program easily with our configuration software. Enjoy:

- Extensive graphics libraries
- Enhanced security
- Email alarm messages and log files
- Recipe and data management
- Write real-time data to PLC registers
- Transfer data between PLCs using the same or different communication protocols
- Remote printing
- Backup PLC data to your PC as a CSV file or proprietary format



At Maple Systems,
it's your RMI,
your way.

Open HMI



Overview

Does your automation process require specific capabilities and customization?

Open HMIs offer a Windows operating system with the flexibility of customized application programming.

Choose from a variety of software application programs to help you achieve complex process goals. Unlock the potential of your process with Open HMIs.

Benefits

Touchscreen Open HMIs

Maple Systems Open HMIs are the perfect solution for OEMs requiring a low-cost, high-quality HMI for custom applications. Open HMIs offer the software flexibility of a Windows operating system, and are affordably priced.

State-of-the-art architecture includes fast 32-bit ARM-based RISC processors and greater memory. Standard and widescreen options include:

- Analog resistive touchscreen
- 600 MHz to 800 MHz RISC CPU
- 256 MB Flash memory, 256 MB DRAM
- Isolated power supply
- Pairs easily with WebStudio software

Add versatility by connecting an external keyboard, mouse, printer, barcode reader, or speakers for audio output.

**Maple Systems Open HMIs
are the perfect solution
for low-cost, high-quality
custom applications.**



Open HMI Series

Features

Open Your Process with Open HMIs

Affordably priced, Maple Systems Open HMIs offer the software flexibility of a Windows operating system.

Rugged Construction

All Open HMIs are built to withstand the harsh environments found on industrial sites. Durable aluminum enclosures help shield and protect the Open HMI from external radiated noise. All units are UL listed and certified to meet European CE standards for noise emission/immunity. In addition, a compact design allows units to be installed in panels with less than 2" depth.

High-Resolution Touchscreen Displays

All Maple Systems Open HMIs possess color TFTs with maximum resolution to display high-clarity screens. Four-wire analog resistive touchscreens have a touch accuracy of $\pm 2\%$ linearity and a lifespan of over one million activations under normal use. LED backlight provides a lifespan over 50,000 hours.



Serial & Ethernet Ports

All Open HMIs possess an Ethernet port for connection to networks or the Internet. In addition, multiple serial ports (RS232 and RS422/485) can be used to connect to programmable logic controllers.



Versatile Communication

Insert an SD card to backup important data and easily remove it for safe keeping. USB ports allow third-party applications to take advantage of peripheral devices such as bar code readers, a mouse, or flash drive.

Windows Embedded CE

Windows Embedded CE operating system comes pre-installed on most Open HMIs.



Create your own custom applications or use off-the-shelf programs including powerful HMI/SCADA software packages. Benefits include:

- Smaller, efficient operating system requires less memory
- Apps for viewing Word, Excel, PDF documents, and more
- Less vulnerable to external virus attacks

Software Features

Pair an Open HMI with Maple recommended configuration software—a powerful and intuitive HMI/SCADA software:

- Create real-time applications that support animated graphic screens, trends, alarms, reports, and recipes
- Utilize sophisticated security features for system protection
- Utilize the Internet to remotely view multiple applications



Panel PC



Overview

Maple Systems industrial Panel PCs exemplify cutting-edge touchscreen technology with high-quality components, impressive connectivity, fast processors, and clear, high-contrast TFT displays.

Designed to withstand harsh industrial environments, our Panel PCs boast multiple certifications and are built to last.

Benefits Powerful Panel PCs

Maple Systems industrial Panel PCs possess everything you need in an industrial computer and more. Offering versatility, affordability and excellent connectivity options, our Panel PCs possess a thin, flat-panel design and mount securely to a panel or VESA 75/100 compatible mount. Additionally, Maple Systems Panel PCs can be configured to communicate with most PLCs and motion controllers for easy control system integration. Key features include:

- Intel® Dual-Core G630T 2.3 GHz processor
- 320 GB shock-resistant hard drive
- 2 Ethernet ports, 5 serial ports, 2 SFP optical ports
- 4 USB 2.0, 2 USB 3.0 ports
- 16.7 million color TFT touchscreen display
- Microsoft Windows® 7 Professional operating system
- Industrial-strength metal enclosure

Built to last, our Panel PCs are constructed with a rugged aluminum bezel and steel enclosure to resist the damaging effects of harsh environments.



Panel PC Series

Features

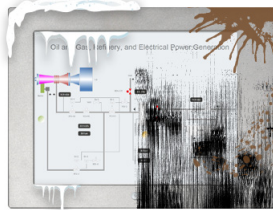
Modern Industrial Computers

Maple Systems offers a powerful and intuitive HMI/SCADA software for Panel PCs as a total solution for your automation needs.

Made for Harsh Environments

Maple Systems industrial Panel PCs are durable Windows 7® computers designed to operate in hostile industrial environments. Constructed with rugged aluminum bezel and steel enclosures, our Panel PCs are built to last and boast multiple certifications to resist the damaging effects of harsh environments:

- CE
- NEMA4
- RoHS
- IP66



SCADA Software

Panel PC configuration software offers the SCADA support needed for total operation control with a media-rich operating environment. Utilizing the Microsoft Windows 7®, XP, or CE.net operating systems, our software was designed to develop industrial application projects for automation and process control.

Our recommended software offers a versatile collection of development tools:

- Intuitive user interface
- Excellent graphics
- Enhanced security features
- Intellectual property protection
- View and modify data remotely

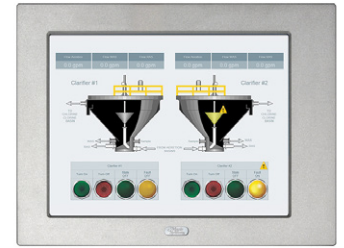


Application Customization

Working with our recommended configuration software is easy. Connect and control a large selection of PLCs, controllers, and I/O devices to expand process function.

Key features include:

- Animated screens
- Alarms
- Recipes
- Reports
- Schedule tasks
- Scripting
- Trends
- And more



Real-Life Applications

Maple Systems Panel PCs are ideal for complex automation tasks in industrial manufacturing, processing, and fabrication environments.

Frequently used for kiosk applications (SQL access, OPC server), Panel PCs are utilized in everything from retail applications to packaging, wastewater, automobile assembly, food processing, and more.



Because they are full-strength industrial computers, Panel PCs can be used with any Windows-based SCADA software, offering you the flexibility you require for custom projects.





Overview

Maple Systems MicroOITs are powerful and affordable operator interface terminals. Our units offer best-in-class features including user-definable keypads, and slide-in legends for a custom look. Enjoy linear scaling, horizontal scrolling, screen chaining, high/low limits, support for multiple languages, and more.

Easily create the perfect operator interface terminal for your application to communicate with PLCs, motion controllers, temperature controllers, embedded controllers, and more.

Maple Systems OITs are Class I, Division 2 rated and compatible with most major PLC brands.

Benefits

Affordable Operator Interfaces

Maple Systems MicroOIT series consists of text-based and alphanumeric operator interface terminals (OITs). These easy-to-program units are available in either backlit LCD or vacuum fluorescent models and are compatible with most major brand PLCs. Perfect for those who desire physical function keys, OITs offer truly cost effective replacements for push buttons, switches, displays, dials, and lamps.

MicroOIT Series Key Features

- 2 x 20 or 4 x 20 LED Backlit LCD
- 2 x 20 or 4 x 20 Light Emitting Vacuum Fluorescent (VFD)
- Class I, Division 2 rated
- Customizable slide-in keypad legends
- 16 or 24 programmable function keys
- Serial RS-232 / RS-485 ports
- Sturdy metal enclosure
- Operates in extreme temperatures: -10°C up to 65°C
- NEMA 4X, UL, and CE certified



OIT Series

Features

Unmatched Functionality and Value

With MicroOITs, achieve a custom look at no extra cost by creating custom slide-in legends to match your specific application.

Vacuum Fluorescent MicroOITs

Choose Vacuum Fluorescent MicroOITs when you need a display that's easier to view in low-light environments. VFD OITs are also useful in situations where a crisp high-contrast display is desired.



Customizable Keys & Insert

The MicroOIT Series has alphanumeric displays with membrane-style keys. Each key is programmable, allowing you to create a unique keypad to match your specific application. Achieve a custom look without paying extra for custom overlays.

Easily label keys with any combination of text, graphics, and colors. Simply slide-out the default legend and slide-in your custom legend for a "built-to-spec" look. Once installed, the legend is completely sealed and protected.



PLC Support

Maple Systems MicroOITs communicate with over 100 brands of PLCs and motion controllers including: Allen-Bradley, Modicon, GE, Keyence, Galil, and Bristol Babcock.

Key Types and Functions

Enjoy 16 or 24 user-definable keys and a user-definable keypad legend to perfectly fit any application. Key types include global function keys, screen dependent function keys, numeric keys, and control keys.

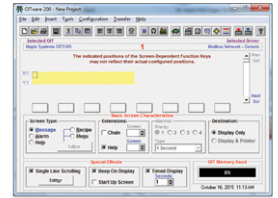


Recipe Screens

Recipe screens allow the operator to download or upload preset values into PLC registers. Configure preset values upon programming the OIT or modify them at any time. With 500 user-definable screens, each recipe screen can include up to 20 preset values.

User-Friendly Configuration Software

Program your MicroOIT with our configuration software to interface with PLC and motion control products or ASCII communication protocol. Our software offers easy-to-navigate controls, allowing application development from any Windows-based PC. Easily design screens, layout the keypad, setup function keys, and more.



ASCII Controller Interface

MicroOITs support RS-232 and RS-422/485 communications. They can be configured as simple ASCII terminals using Maple Systems configuration software. For applications requiring multiple OITs, MicroOITs support multi-drop networks of up to 255 units. Display text messages from the controller, ASCII character strings, or alternate user-defined messages on the OIT. You may also program keys to simulate momentary and on/off switches by sending ASCII character strings to the host controller.



Effective
Operator Interface
Solutions



Overview

Maple Systems delivers the industry's best value in control products. For us, "best value" means high-quality products and outstanding service at a great price.

In addition, all products are backed by an outstanding team and complimentary technical support. How can we help meet *your* control needs?

Support The Maple Standard

Maple Systems is honored to be recognized as a leader in the industrial controls marketplace. The Maple Standard represents our dedication to delivering high-quality control products and support to our valued customers. It is our promise to deliver quality, reliability, and value to help you achieve your business and process goals. We'll assist you every step of the way so you can get the job done on time and within budget.

We Make Partnerships Easy

At Maple Systems, our team strives to make doing business with us easy. We want you achieve a positive and enjoyable experience every time you use our products or services. When partnering with Maple Systems, know that our high-quality, competitively-priced products are backed by a dedicated team of professionals ready to assist you. We also lead our industry with:

- Over 30 years of industry experience
- Rugged products that are built-to-last
- A team dedicated to providing complimentary support

For us, "best value" means providing high-quality control products and outstanding service at a great price.



Support

Quality Products & Customer Service

The Maple Standard represents our promise to deliver quality, reliability, and value to help you achieve your business and process goals.

PLC Integration

Maple Systems products integrate with more than 100 brands of programmable controllers from the biggest names in PLCs including Allen Bradley, Schneider Electric, GE, Siemens, Mitsubishi, and Omron.



Communicate with PLCs, motion controllers, temperature controllers, embedded microcontrollers, and more.

Intuitive Configuration Software

Our configuration software is easy-to-use and offers great functionality. Enjoy alarm management, data logging, trending, batch recipes, and more. Experience greater functionality at a fraction of the cost compared to other industry models.

Maple Systems Partners with Weintek Labs

Maple Systems partners with Weintek Labs, Inc. to promote HMI products in North America, ensuring the ultimate HMI experience in control automation and machine design. As the largest North American supplier of Weintek products, Maple Systems is able to offer affordable solutions with best-in-class application support.



Weintek has also appointed Maple Systems as its premier partner and technical support center for HMIs in North America.

Comprehensive Website and Support Center

Our website's online support center provides customers with 24-hour answers to complex control automation needs. Explore tech notes, product specifications, sample projects, drivers, and software upgrades. We also offer complimentary technical support to our customers via email and phone.



Industry Accolades

Maple Systems has received many favorable product reviews, readership, and editor awards from customers, media, and trade publications.



Our products have been featured in articles from major trade publications including Control Design, Control Engineering, and Packaging World. Maple Systems was also named one of America's fastest growing private companies for six years by Inc. 5000 Magazine.

Reliability You Can Trust

At Maple Systems, we want every customer to be a lifelong customer. This commitment has helped us consistently offer great value and support to customers at affordable prices.

We hope you will be a part of our future as we continue to lead and innovate the industrial controls marketplace. After all, the most important ingredient in "The Maple Standard" is you.

Contact Us

How can Maple Systems help meet *your* control needs? Contact our control automation experts today.

Phone: 425.745.3229

Email: info@maplesystems.com

Website: www.maplesystems.com



**Control
Solutions for
Every Industry**



Maple Systems
808 134th St. SW, Suite 120
Everett, WA 98204

Your Industrial Control Solutions Source

www.maplesystems.com



AW0910-0025
November 2015