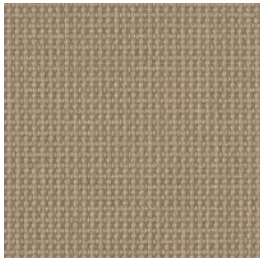
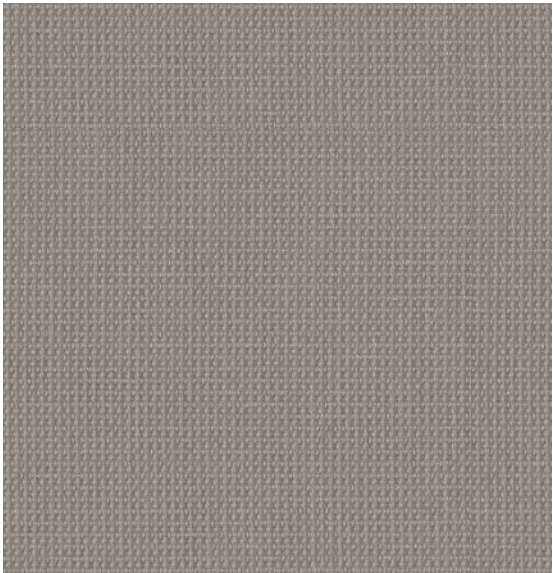


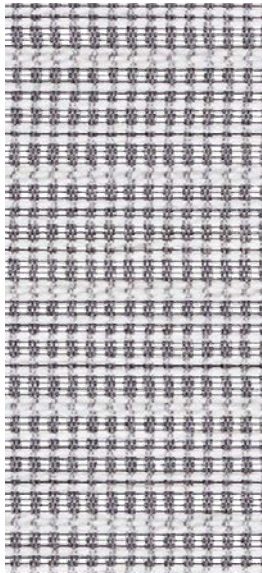
# Wit Mesh



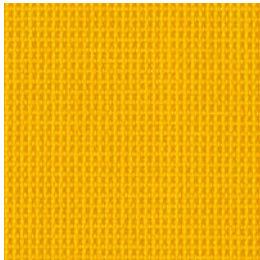
Desert



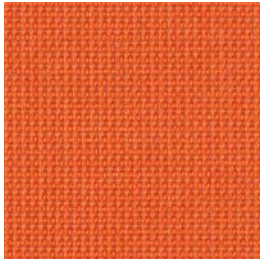
Fog



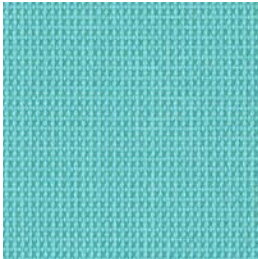
\*Woven Striped, Fog



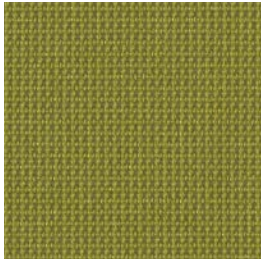
Lemon



Tangerine



Aqua



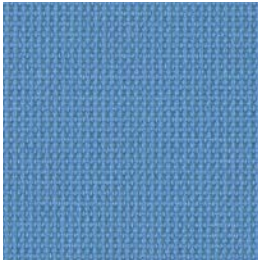
Apple



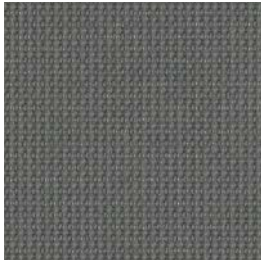
\*Woven Striped, Frost



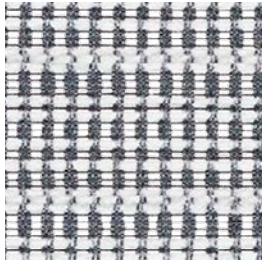
Fire



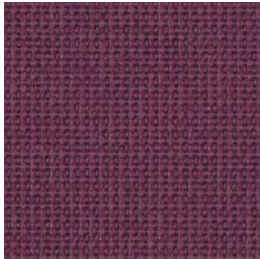
Ocean



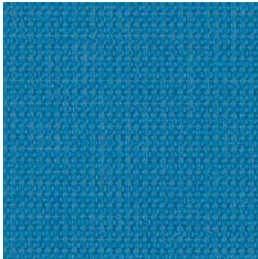
Nickel



\*Woven Striped, Nickel



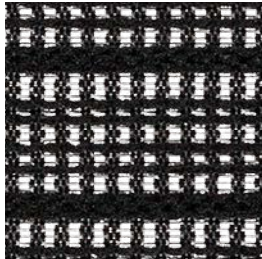
Grape



Electric Blue



Onyx



\*Woven Striped, Onyx

Pattern: Wit Mesh

68% Polyester  
32% Elatomerics

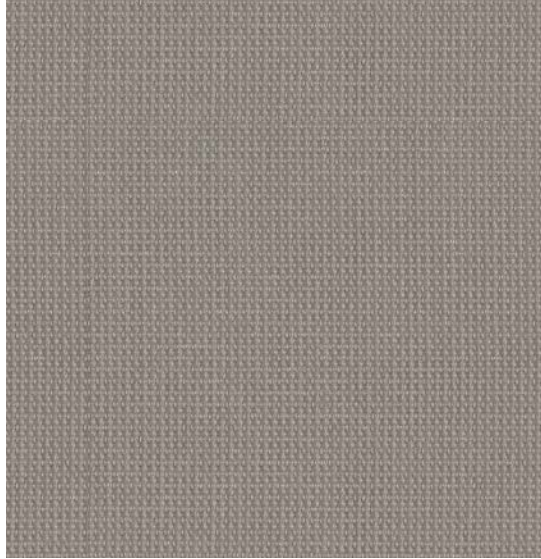
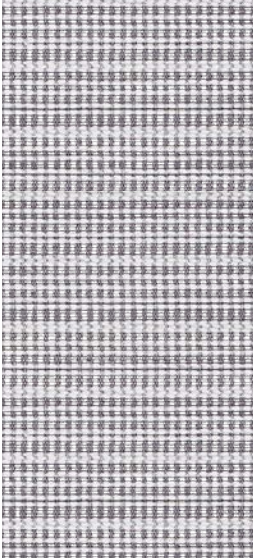
Abrasion:  
100,000 Double Rubs

Bleach Cleanable




\*Not available on Wit side

<b>Pattern</b>	Wit Mesh
<b>Content</b>	68% Polyester, 32% Elastomeric
<b>Width</b>	54"








**Abrasion** 100,000 Double Rubs

**Applicable ACT®**     

**Cleaning Code** WS/BC: 10:1  
 WS: Water based foam or cleaner  
 BC: Bleach cleanable 10:1 

**Samples** To order samples, call (888) 274-8664 or visit [sitonit.net](http://sitonit.net) or [ideondesign.com](http://ideondesign.com)

### Icon upholstery definitions

-  **Fire Retardency**  
Flammability testing determines a fabric's resistance to burning. Passes Cal 117.
-  **Colorfastness to Wet and Dry Crocking**  
The rubbing off of color from fabric onto clothing, hands or other materials can occur under wet or dry conditions. Passes AATCC 8-1974 Dry Crocking. Class 4 minimum, Wet Crocking. Class 3 minimum.
-  **Colorfastness to Light**  
The degree to which fabric will retain its color when exposed to light. Passes AATCC 16A-1974 or AATCC 16E-1976. Class 4 minimum at 40 hours. Note: Class 4 minimum at 60 hours is recommended for direct sunlight exposure.
-  **Physical Properties**  
Brush Pilling Test to determine a fabric's pilling, Breaking/Tensile Strength Test determines the ability of a fabric to withstand tension without breaking or tearing. Seam Slippage Test determines pulling apart of fabrics at the seams. Passes Brush Pilling ASTM D3511, 3-4 minimum, Breaking Strength ASTM D3597-D1682 (1975) 50 lbs. minimum in warp & weft, Seam Slippage ASTM D3597-D434-75 25 lbs. minimum warp & weft.
-  **Abrasion**  
The ability of a fabric to withstand damage from wear or rubbing. Passes Heavy Duty Contract ASTM 3597 modified (No. 10 cotton duck); 30,000 double rubs Wyzenbeek Method or ASTM 4966 modified (with 21 oz. wt.); 40,000 rubs Martindale Method.



(888) 274-8664

(714) 995-4855 Fax

[sitonit.net](http://sitonit.net)

[sales@sitonit.net](mailto:sales@sitonit.net)

[IDEONDesign.com](http://IDEONDesign.com)

[sales@ideondesign.com](mailto:sales@ideondesign.com)

### Showroom Locations

**Los Angeles**  
 6415 Katella Avenue  
 Cypress, CA 90630

**Chicago**  
 222 Merchandise Mart Plaza  
 Suite 1150  
 Chicago, IL 60654

**New York City**  
 11 East 26th  
 New York, NY 10010