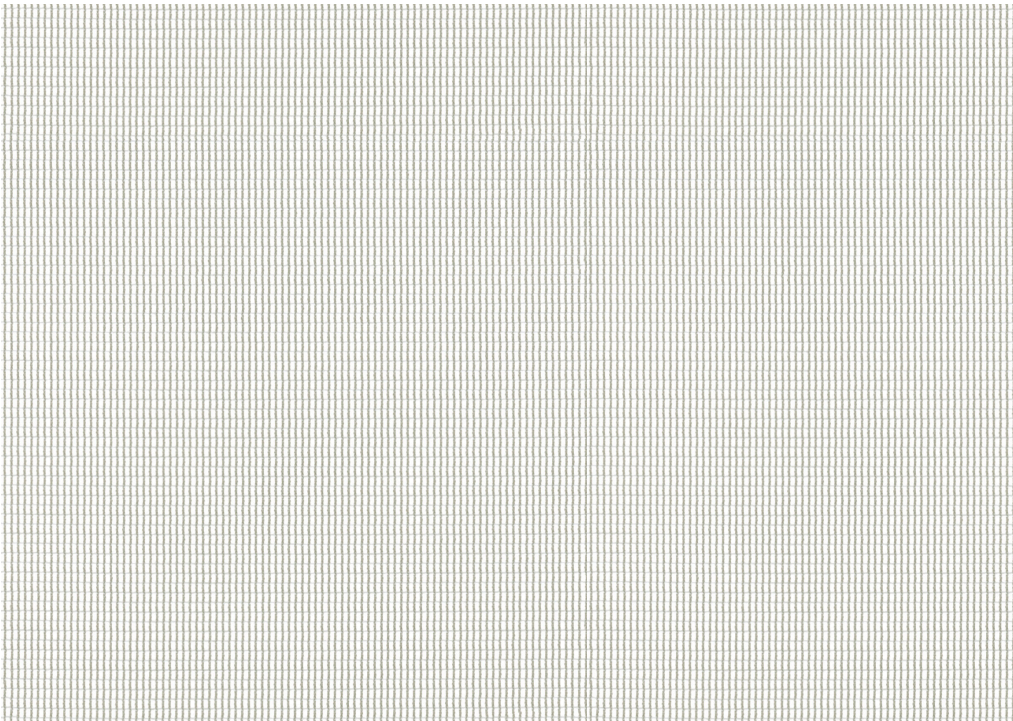


micro mesh



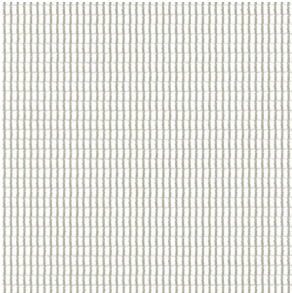
Pattern: micro mesh

100% Polyester

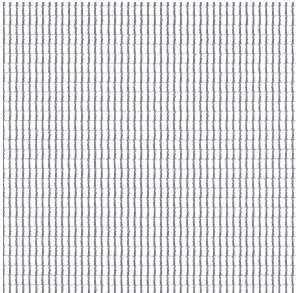
Abrasion:
100,000 Double Rubs

Bleach Cleanable

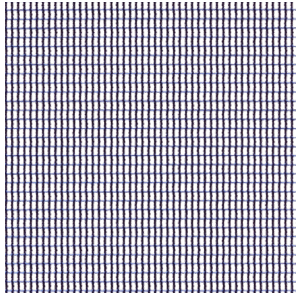
Platinum



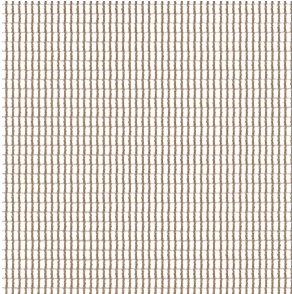
Platinum



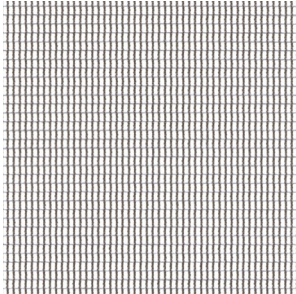
Mist



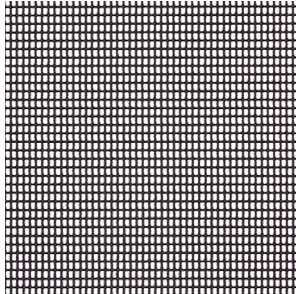
Navy



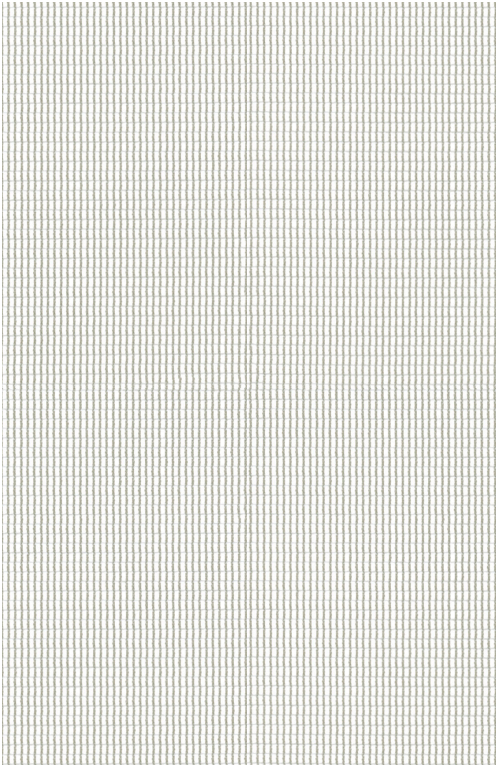
Desert








Nickel



Onyx



Pattern	micro mesh
Content	100% Polyester
Width	54"
Abrasion	100,000 Double Rubs
Applicable ACT®	    
Cleaning Code	WS: Water based cleaning agents and foam may be used, vacuuming or light brushing is recommended to prevent dust and soil build up. BC: Bleach cleanable (1:10)
Samples	To order samples, call (888) 274-8664 or contact your local SitOnIt Seating/IDEON sales rep.

Icon upholstery definitions



Fire Retardancy

Flammability testing determines a fabric's resistance to burning. Passes Cal 117.



Colorfastness to Wet and Dry Crocking

The rubbing off of color from fabric onto clothing, hands or other materials can occur under wet or dry conditions. Passes AATCC 8-1974 Dry Crocking, Class 4 minimum, Wet Crocking, Class 3 minimum.



Colorfastness to Light

The degree to which fabric will retain its color when exposed to light. Passes AATCC 16A-1974 or AATCC 16E-1976, Class 4 minimum at 40 hours. Note: Class 4 minimum at 60 hours is recommended for direct sunlight exposure.



Physical Properties

Brush Pill Test to determine a fabric's pilling, Breaking/Tensile Strength Test determines the ability of a fabric to withstand tension without breaking or tearing, Seam Slippage Test determines pulling apart of fabrics at the seams. Passes Brush Pill ASTM D3511, 3-4 minimum, Breaking Strength ASTM D3597-D1682 (1975) 50 lbs. minimum in warp & weft, Seam Slippage ASTM D3597-D434-75 25 lbs. minimum warp & weft.



Abrasion

The ability of a fabric to withstand damage from wear or rubbing. Passes Heavy Duty Contract ASTM 3597 modified (No. 10 cotton duck); 30,000 double rubs Wyzenbeek Method or ASTM 4966 modified (with 21 oz. wt.); 40,000 rubs Martindale Method.



6415 Katella Ave., Cypress, CA. 90630
 sitonit.net • ideondesign.com • 888.274.8664