

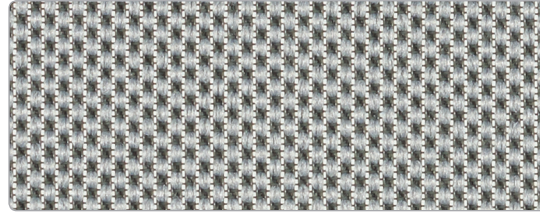
Focus 2.0 Mesh

Focus Mesh

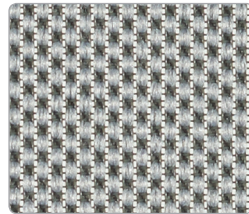


Slate

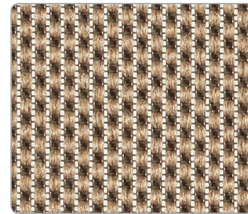
Focus 2.0 Mesh



Fog

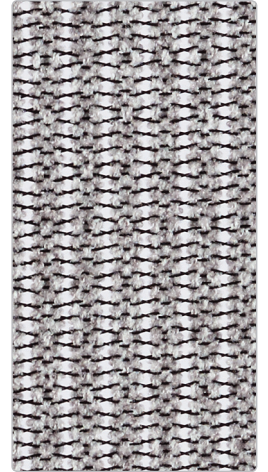


Fog

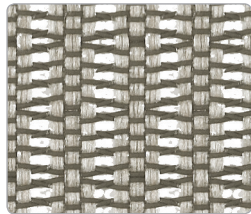


Desert

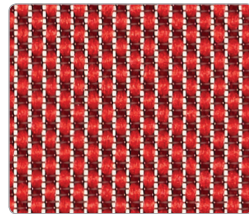
Focus 2.0 Uptown Mesh



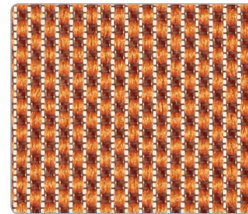
Ash



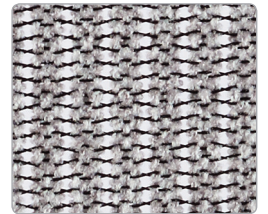
Sand



Fire



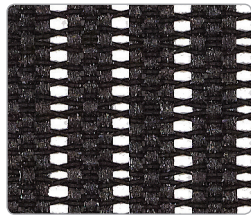
Tangerine



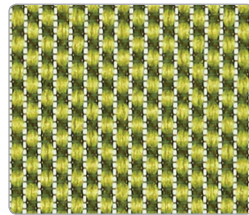
Ash

CAL 133 approved

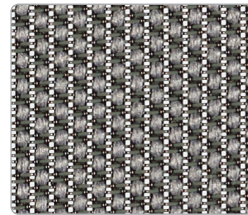
Bleach cleanable



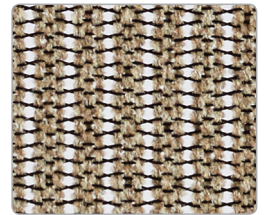
Black



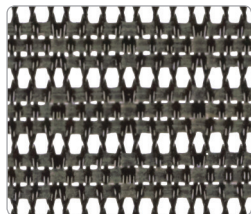
Apple



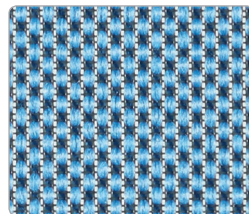
Nickel



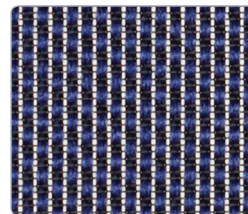
Dune



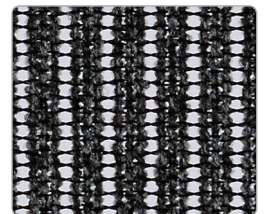
Impress



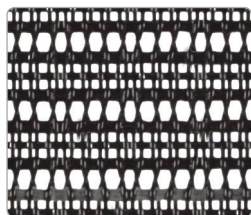
Ocean



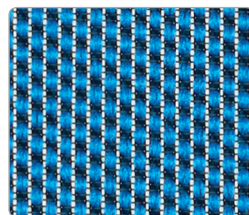
Navy



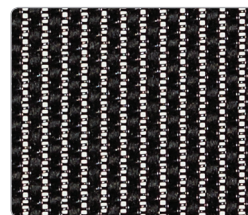
Charcoal



Freeway



Electric Blue



Onyx



Midnight

Pattern	Content	Abrasion	Applicable ACT®	Cleaning Code
Focus Mesh	30% Polyester, 70% Polyelastomeric	100,000+ Double Rubs		WS BC (1:10)
Focus 2.0 Mesh	30% Polyester, 70% Polyelastomeric	100,000+ Double Rubs		BC (1:10)
Focus 2.0 Uptown Mesh	53% Polyester, 47% Polyelastomeric	60,000+ Double Rubs		BC (1:10)

These patterns meet or exceed these ACT Performance standards for upholstery:

To see full repeat of mesh patterns, configure your product ChairBuilder.com.
To order samples, call 714.995.4800 or contact your local SitOnIt Seating / IDEON sales rep.

icon upholstery definitions



Fire Retardency

Flammability testing determines a fabric's resistance to burning. Passes Cal 117.



Colorfastness to Wet and Dry Crocking

The rubbing off of color from fabric onto clothing, hands or other materials and can occur under wet or dry conditions. Passes AATCC 8-1974 Dry Crocking. Class 4 minimum, Wet Crocking. Class 3 minimum.



Colorfastness to Light

The degree to which fabric will retain its color when exposed to light. Passes AATCC 16A-1974 or AATCC 16E-1976. Class 4 minimum at 40 hours. Note: Class 4 minimum at 60 hours is recommended for direct sunlight exposure.



Physical Properties

Brush Pill Test to determine a fabric's pilling, Breaking/Tensile Strength Test determines the ability of a fabric to withstand tension without breaking or tearing. Seam Slippage Test determines the pulling apart of fabrics at the seams. Passes Brush Pill ASTM D3511, 3-4 minimum, Breaking Strength ASTM D3597-D1682-64 (1975) 50 lbs. minimum in warp & weft, Seam Slippage ASTM D3597-D434-75 25 lbs. minimum in warp & weft.



Abrasion

The ability of a fabric to withstand damage from wear and rubbing. Passes Heavy Duty Contract ASTM 3597 modified (No.10 cotton duck); 30,000 double rubs Wyzenbeek Method or ASTM 4966 modified (with 21 oz. wt.); 40,000 rubs Martindale Method.



6415 Katella Ave. • Cypress, CA 90630
sitonit.net • ideondesign.com • 888.274.8664