

---

Focus  
reimagined

Focus 2.0™



SitOnIt • Seating®



## California born and bred

For 20+ years, we've been the go-to destination for built-to-order seating because we combine award-winning design with the fastest lead times around. Customizing is oh-so-easy with our industry-leading visualization tool – ChairBuilder™. We can build almost any specification you want, deliver it when you need it and offer a price no one can match. It's all part of our indie California spirit and drive to help you innovate and inspire.

## Updated. Upgraded. Up to any task.

There's a legacy that follows Focus. Some call it classic. Others say it's iconic. It's been one of the industry's best-selling chairs for 10+ years – and it's time we make something great even better.

Focus 2.0 is more than a makeover. It's a modernization. It's driving dependable design forward with innovative mesh, enhanced (and expanded) customization, advanced functionality and a slimmer silhouette that offers superior comfort from integrated lumbar support and cutting-edge ergonomics. Focus 2.0 is everything you loved in the first generation and more.



## Focus on color

---

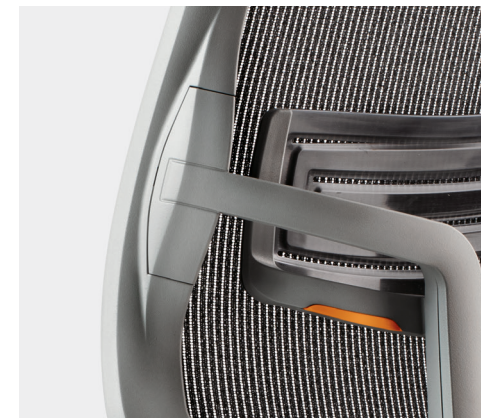
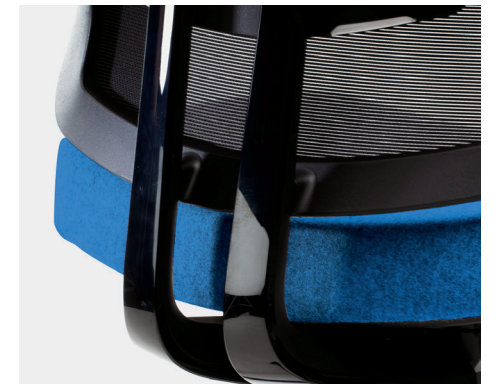
And do more (with more) to create more. Two new meshes and 12 accent colors in four locations mean expanded ways in which you can color and coordinate so that every Focus 2.0 feels as unique as the personalities who use it.



## Focus on design

---

Go from exciting to exhilarating with enhancements that now come standard. We updated Focus 2.0 with features for today's modern office while looking ahead to the workplace of tomorrow.



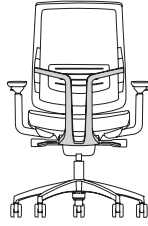
## The heart of what matters most

---

You'll find Focus at the place where comfort, design and everything you value in a smart solution converge. That's how we created an icon and best-selling solution for 10+ years. Its evolution will continue this legacy. Focus 2.0 is reimagined, redefined and ready to inspire a whole new generation.



# Specifications



MODEL:	1123 BK2 MB Highback Mesh
Overall Width with Arms	26
Overall Depth	26
Overall Height	38.8-42.6
Seat Width	19.6
Seat Depth	17.7-19.6
Seat Height (T mechanism)	16.6-20.1
Seat Height (Y mechanism)	16.9-20.4
Seat Height with Higher Cylinder (T mechanism)	17.1-22.3
Seat Height with Higher Cylinder (Y mechanism)	17.4-22.6
Back Width	18.3
Back Height	23.6
Weight Armless	38.7 lb
Weight with Arms	43.5 lb
COM	1 yd
COL	14 sq ft
Weight Capacity Warranty	300 lb

*Dimensions are in inches.*



**Advanced lumbar**



**High-performance casters**



**2-, 4-, 8-way arms**



**Optional Uptown mesh**  
*(Residential inspired)*



**Ergo-curve seat**



**Intuitive mechanism**



**Modernized Y-support**



**SitOnIt • Seating®**

FRONT COVER TEXTILE: SitOnIt Seating/IDEON Newport Mars

For more information, please visit us at [sitonit.net](http://sitonit.net) • tel (888) 274-8664 • fax (714) 995-4855 • [sales@sitonit.net](mailto:sales@sitonit.net) • 6415 Katella Avenue, Cypress, CA 90630

SitOnIt Seating and Focus 2.0 are trademarks or registered trademarks of Exemplis. ©2019 Exemplis. Form No. C6217 1911004 Printed in USA.