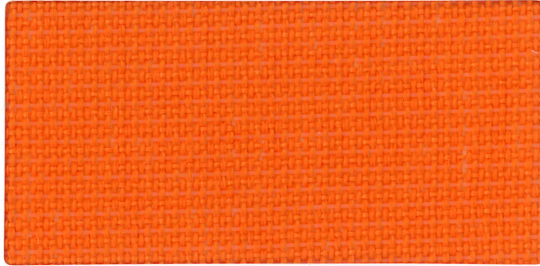


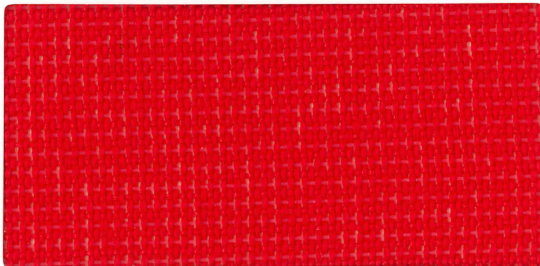
AMPLIFY & FOCUS SIDE MESH



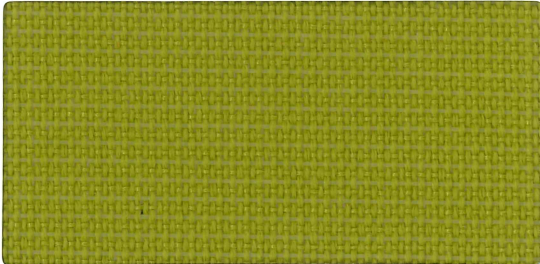
Desert



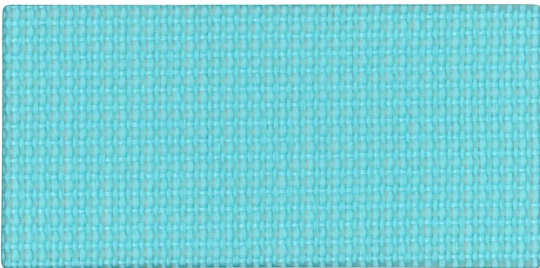
Tangerine



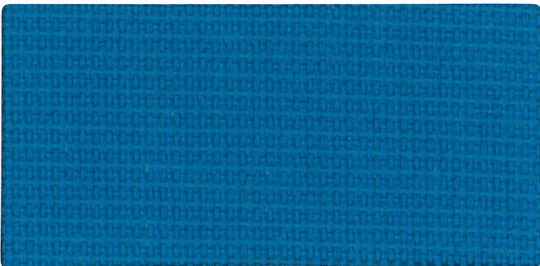
Fire



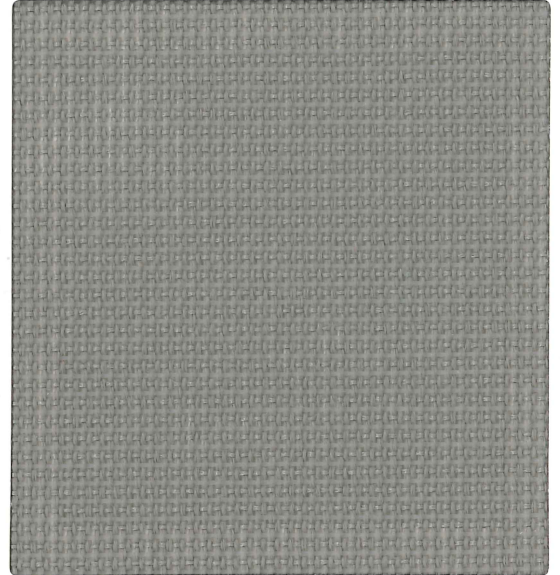
Apple



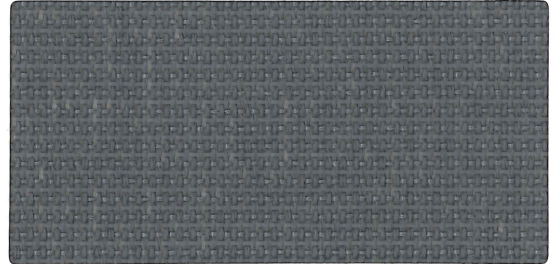
Aqua



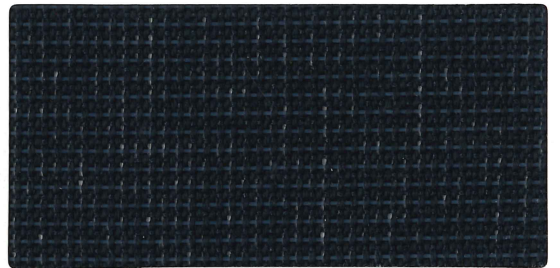
Electric Blue



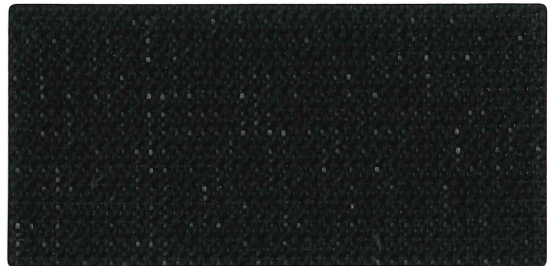
Fog



Nickel



Navy

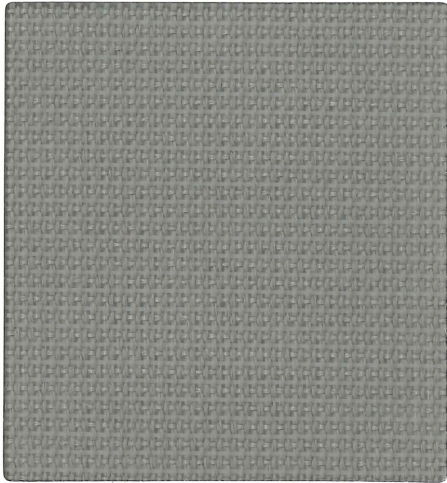







Onyx

Pattern: Amplify Mesh






68% Polyester,
32% Poly Elastomeric

Abrasion:
100,000 double rubs



| | |
|------------------------|---|
| Pattern | Amplify Mesh Focus Side Mesh |
| Content | 68% Polyester, 32% Elastomeric |
| Width | 54" |
| Abrasion | 100,000 Double Rubs |
| Applicable ACT® |      |
| Cleaning Code | WS: Water-based cleaning agents and foam may be used, vacuuming or light brushing is recommended to prevent dust and soil buildup. |
| Samples | To order samples, call (888) 274-8664 or visit sitonit.net or ideondesign.com |

icon upholstery definitions

-  **Fire Retardency**
Flammability testing determines a fabric's resistance to burning. Passes Cal 117.
-  **Colorfastness to Wet and Dry Crocking**
The rubbing off of color from fabric onto clothing, hands or other materials and can occur under wet or dry conditions. Passes AATCC 8-1974 Dry Crocking, Class 4 minimum, Wet Crocking, Class 3 minimum.
-  **Colorfastness to Light**
The degree to which fabric will retain its color when exposed to light. Passes AATCC 16A-1974 or AATCC 16E-1976, Class 4 minimum at 40 hours
Note: Class 4 minimum at 60 hours is recommended for direct sunlight exposure.
-  **Physical Properties**
Brush Pilling Test to determine a fabric's pilling, Breaking/Tensile Strength Test determines the ability of a fabric to withstand tension without breaking or tearing. Seam Slippage Test determines the pulling apart of fabrics at the seams. Passes Brush Pilling ASTM D3511, 3-4 minimum, Breaking Strength ASTM D3597-D1682-64 (1975) 50 lbs. minimum in warp & weft, Seam Slippage ASTM D3597-D434-75 25 lbs. minimum in warp & weft.
-  **Abrasion**
The ability of a fabric to withstand damage from wear and rubbing. Passes Heavy Duty Contract ASTM 3597 modified (No.10 cotton duck); 30,000 double rubs Wyzenbeek Method or ASTM 4966 modified (with 21 oz. wt.); 40,000 rubs Martindale Method.



(888) 274-8664

(714) 995-4855 Fax

sitonit.net

sales@sitonit.net

IDEONDesign.com

sales@ideondesign.com

Showroom Locations

Los Angeles

6415 Katella Avenue
Cypress, CA 90630

Chicago

222 Merchandise Mart Plaza
Suite 1150
Chicago, IL 60654

New York City

11 East 26th
New York, NY 10010