



**VS AMERICA
2020 QUICKSHIP PROGRAM**

**ALL INVENTORY SHIPS FROM NORTH CAROLINA OR
TEXAS IN 10 BUSINESS DAYS OR LESS.**

VS AMERICA

VS America, Inc. provides adaptable and ergonomic educational furniture solutions for the creation of agile learning environments.

At VS, we believe successful learning should balance the needs of the body, mind, and soul. We always encourage movement and natural curiosity. From our fully-adjustable chairs to modular tables that encourage collaboration, we believe that learning is an active process. When students engage their senses while learning, the long-term benefits include a heightened focus, stronger motivation, and a sense of well-being.

Our ergonomic furniture inspires motion, and has the flexibility to adapt to every changing classroom need – giving educators the freedom to easily create spaces for every type of learning style.

For more information, please visit www.vsamerica.com/agilespace.

QUICKSHIP PROGRAM

When a project requires a short turnaround time, the QuickShip Program will help get products to you faster - in-stock products will ship in 10 business days or less.

The specific products showcased in this brochure are all included in the QuickShip Program. QuickShip is based on a first-come, first-served basis, and items may not be reserved for longer than 10 business days. Please confirm available quantities before placing an order.

GETTING PRODUCTS TO CUSTOMERS FASTER

CONTENTS

SEATING	JUMPER Air Active	6
	PantoSwing	10
	PantoMove	14
	Compass	18
	Hokki	22
	Hokki+.....	26
	Solo	30
	LuPoStool	34
Shift+ Landscape	38	
TABLES	Shift+ ThumbPrint	42
	LiteTable-ST.....	46
	FlipTable-RU	50
	Height-adjustable FlipTable	54
	Shift+ FusionFlip	56
	RondoLift-KF	60
	Shift+ Interact	64
STORAGE	Shift+ Transfer	68
	Shift+ Transfer Box	72
CLASSROOMS	Agile Spaces	76
	Sample Classroom Layouts	77

JUMPER AIR ACTIVE

Forward-flexing cantilever chair

Adaptable and durable, the JUMPER® chair is also active, lively, and versatile. The seat shell is made of a double wall of polypropylene that creates an air-cushion effect for a comfortable sitting posture. The JUMPER is also equipped with an easy-carry grip hole and stacks up to 5 high.



THE MODELS

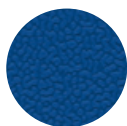


MODEL: 33400

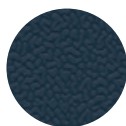
SEAT HEIGHTS

 Yellow Dot - 13 ³/₈"  Red Dot - 15"  Green Dot - 17"  Blue Dot - 18 ¹/₈"

SEAT SHELL COLORS



Dark Blue
(029)



Black Grey
(073)

METAL FINISHES



Arctic
(059)

GLIDES



2-Component



Also pictured

Uno-C Table: Not available for QuickShip.

JUMPER AIR ACTIVE DETAILS

MODEL	ITEM CODE	HEIGHT	FRAME	SHELL SIZE	SEAT SHELL COLOR	GLIDES
33400	031	● Yellow Dot - 13 3/8"	Arctic (059)	S	Black Grey (073)	2-Component
33400	082	● Yellow Dot - 13 3/8"	Arctic (059)	S	Dark Blue (029)	2-Component
33400	032	● Red Dot - 15"	Arctic (059)	M	Black Grey (073)	2-Component
33400	083	● Red Dot - 15"	Arctic (059)	M	Dark Blue (029)	2-Component
33400	033	● Green Dot - 17"	Arctic (059)	M	Black Grey (073)	2-Component
33400	084	● Green Dot - 17"	Arctic (059)	M	Dark Blue (029)	2-Component
33400	034	● Blue Dot - 18 1/8"	Arctic (059)	L	Black Grey (073)	2-Component
33400	085	● Blue Dot - 18 1/8"	Arctic (059)	L	Dark Blue (029)	2-Component

PANTOSWING-LUPO

Forward-flexing cantilever chair

The PantoSwing's dynamic seat encourages regular changes in sitting positions, which has been shown to activate both the body and mind, and to increase the attention of students. With a frame made of bent, powder-coated steel tubing and a seat shell made of double-walled textured polypropylene, this chair takes durability to a new level.




THE MODELS

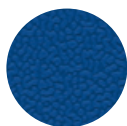


MODEL: 31400

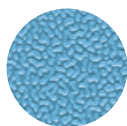
SEAT HEIGHTS

-  Yellow Dot - 13 ³/₈"  Red Dot - 15"  Green Dot - 17"  Blue Dot - 18 ¹/₈"

SEAT SHELL COLORS



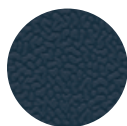
Dark Blue
(029)



Light Blue
(030)



Light Green
(033)



Black Grey
(073)

METAL FINISHES



Arctic
(059)

GLIDES



2-Component



Plastic



PANTOSWING-LUPO DETAILS

MODEL	ITEM CODE	HEIGHT	FRAME	SHELL SIZE	SEAT SHELL COLOR	GLIDES
31400	140	● Yellow Dot - 13 3/8"	Arctic (059)	S	Black Grey (073)	2-Component
31400	145	● Yellow Dot - 13 3/8"	Arctic (059)	S	Dark Blue (029)	2-Component
31400	238	● Yellow Dot - 13 3/8"	Arctic (059)	S	Light Green (033)	2-Component
31400	216	● Yellow Dot - 13 3/8"	Arctic (059)	S	Light Blue (030)	2-Component
31400	351	● Yellow Dot - 13 3/8"	Arctic (059)	S	Black Grey (073)	Plastic
31400	141	● Red Dot - 15"	Arctic (059)	M	Black Grey (073)	2-Component
31400	146	● Red Dot - 15"	Arctic (059)	M	Dark Blue (029)	2-Component
31400	211	● Red Dot - 15"	Arctic (059)	M	Light Green (033)	2-Component
31400	214	● Red Dot - 15"	Arctic (059)	M	Light Blue (030)	2-Component
31400	381	● Red Dot - 15"	Arctic (059)	M	Black Grey (073)	Plastic
31400	142	● Green Dot - 17"	Arctic (059)	M	Black Grey (073)	2-Component
31400	147	● Green Dot - 17"	Arctic (059)	M	Dark Blue (029)	2-Component
31400	217	● Green Dot - 17"	Arctic (059)	M	Light Green (033)	2-Component
31400	300	● Green Dot - 17"	Arctic (059)	M	Light Blue (030)	2-Component
31400	431	● Green Dot - 17"	Arctic (059)	M	Black Grey (073)	Plastic
31400	117	● Blue Dot - 18 1/8"	Arctic (059)	L	Black Grey (073)	2-Component
31400	120	● Blue Dot - 18 1/8"	Arctic (059)	L	Dark Blue (029)	2-Component
31400	200	● Blue Dot - 18 1/8"	Arctic (059)	L	Light Green (033)	2-Component
31400	201	● Blue Dot - 18 1/8"	Arctic (059)	L	Light Blue (030)	2-Component
31400	223	● Blue Dot - 18 1/8"	Arctic (059)	L	Dark Blue (029)	Plastic
31400	199	● Blue Dot - 18 1/8"	Arctic (059)	L	Black Grey (073)	Plastic

PANTOMOVE-LUPO

Ergonomic, height-adjustable chair

The PantoMove chair is height-adjustable, making it easy to quickly adjust the seat to individual requirements. The patented 3D rocking mechanism offers even greater dynamic sitting by allowing the seat area to react to every change of weight and leans gently forward, backward, or sideways.

The PantoMove is a great mobile solution for any agile space.



THE MODELS



MODEL: 31506



MODEL: 31510



MODEL: 31507

SEAT HEIGHTS

Adjustable from
16 1/2" - 21 1/2" (31506)

Adjustable from
18 3/8" - 23 3/8" (31510)

Adjustable from
19 1/4" - 27 1/8" (31507)

SEAT SHELL COLORS



Dark Blue
(029)



Black Grey
(073)

METAL FINISHES



Arctic
(059)

CASTORS



Soft Castors



Hard Castors
(31506)



PANTOMOVE-LUPO DETAILS

MODEL	ITEM CODE	SEAT HEIGHT	FRAME	SHELL SIZE	SEAT SHELL COLOR	3D ROCKING	CASTORS
31506	081	Adjustable from 16 1/2" - 21 1/2"	Arctic (059)	L	Dark Blue (029)	Yes	Hard
31506	082	Adjustable from 16 1/2" - 21 1/2"	Arctic (059)	L	Dark Blue (029)	Yes	Soft
31506	083	Adjustable from 16 1/2" - 21 1/2"	Arctic (059)	L	Black Grey (073)	Yes	Hard
31506	084	Adjustable from 16 1/2" - 21 1/2"	Arctic (059)	L	Black Grey (073)	Yes	Soft
31510	003	Adjustable from 18 3/8" - 23 3/8"	Arctic (059)	XL	Dark Blue (029)	Yes	Soft
31510	102	Adjustable from 18 3/8" - 23 3/8"	Arctic (059)	XL	Black Grey (073)	Yes	Soft
31507	012	Adjustable from 19 1/4" - 27 1/8" with footring	Arctic (059)	L	Dark Blue (029)	Yes	Soft
31507	001	Adjustable from 19 1/4" - 27 1/8" with footring	Arctic (059)	L	Black Grey (073)	Yes	Soft

COMPASS-LUPO

Four-legged chair

The Compass-LuPo chair on soft castors or 2-component glides makes mobility easy and is perfect for hard floors. The frame is made of bent and welded powder-coated round steel tubing, and the seat shell is made of double-walled polypropylene for comfortable sitting with an air-cushion effect.



THE MODELS



MODEL: 31300

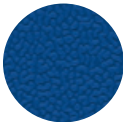


MODEL: 31315

SEAT HEIGHTS

 Blue Dot - 18 1/8"

SEAT SHELL COLORS



Dark Blue
(029)



Black Grey
(073)

METAL FINISHES



Arctic
(059)

CASTORS



Soft Castors

GLIDES



2-Component Glides



COMPASS-LUPO DETAILS

MODEL	ITEM CODE	HEIGHT	FRAME	SHELL SIZE	SEAT SHELL COLOR	CASTORS/ GLIDES
31300	097	● Blue Dot - 18 1/8"	Arctic (059)	L	Black Grey (073)	2-Component
31300	098	● Blue Dot - 18 1/8"	Arctic (059)	L	Dark Blue (029)	2-Component

MODEL	ITEM CODE	HEIGHT	FRAME	SHELL SIZE	SEAT SHELL COLOR	CASTORS
31315	074	● Blue Dot - 18 1/8"	Arctic (059)	XL	Black Grey (073)	Soft

HOKKI

Iconic wobble stool

The Hokki stool is a true original, with an iconic wobble that creates added motion and balance, making it easy for children and adults of all ages to be more engaged and focused. The floor safe slip-resistant rubber base features a convex shape, allowing for a natural, 360-degree range of motion.



THE MODELS

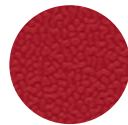


MODEL: 3825

SEAT HEIGHTS

- Violet Dot - 12 1/4" ● Red Dot - 15" ● Blue Dot - 18 1/8" ● Brown Dot - 20 1/8"

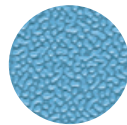
COLORS



Dark Red
(027)



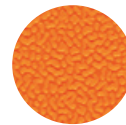
Dark Blue
(029)



Light Blue
(030)



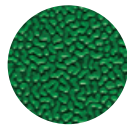
White
(031)



Orange
(032)



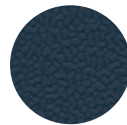
Light Green
(033)



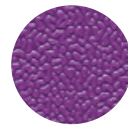
Green
(034)



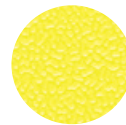
Traffic Red
(037)



Black Grey
(073)



Purple
(036)



Yellow
(999)



Also pictured

PantoSwing: Page 10

Shift+ FusionFlip: Page 56

HOKKI DETAILS

MODEL	HEIGHT
3825	● Violet Dot - 12 1/4"
3825	● Red Dot - 15"
3825	● Blue Dot - 18 1/8"
3825	● Brown Dot - 20 1/8"

HOKKI+

Height-adjustable wobble stool

The Hokki+® is the height-adjustable Hokki, available with a height adjustment range of 15" to 19³/₄" or 19³/₄" to 26³/₄". The Hokki+ has a gas spring height adjustment with anti-twist protector, resulting in overall stability and seating comfort. The adjustment mechanism is immediately accessible and can be triggered from any position with one hand.



THE MODELS



MODEL: 3813



MODEL: 3814

SEAT HEIGHTS

Adjustable from 15" - 19 ³/₄" (3813)

Adjustable from 19 ³/₄" - 26 ³/₄" (3814)

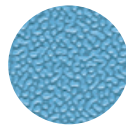
COLORS



Dark Red
(027)



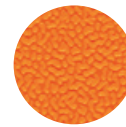
Dark Blue
(029)



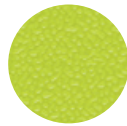
Light Blue
(030)



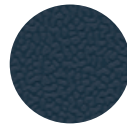
White
(031)



Orange
(032)



Light Green
(033)



Black Grey
(073)



Also pictured

Shift+ Interact: Page 64

Shift+ Transfer Teach: Page 68.

HOKKI+ DETAILS

MODEL	HEIGHT
3813	Adjustable from 15" - 19 ³ / ₄ "
3814	Adjustable from 19 ³ / ₄ " - 26 ³ / ₄ "

SOLO

Four-legged stool

The Solo stool is available in four fixed sitting heights of 18¹/₈", 20¹/₈", 24", and 30" and has 4 foot rings positioned at different heights for use as footrests. These foot rings make the Solo stool easy to be used by students of all heights. This stool can be stacked up to 5 at a time.



THE MODELS



MODELS: 3826, 3826-S

SEAT HEIGHTS

- Blue Dot - 18 1/8"
- Brown Dot - 20 1/8"
- Special Height - 24"
- Special Height - 30"

SEAT SHELL COLORS



Natural Beech (010)



Light Green (021)



Light Blue (022)



Dark Blue (029)

METAL FINISHES



Arctic (059)

GLIDES



Plastic



Also pictured
RondoLift-KF: Page 60

SOLO STOOL DETAILS

MODEL	ITEM CODE	HEIGHT	FRAME	SEAT COLOR	GLIDES
3826	051	● Brown Dot - 20 1/8"	Arctic (059)	Natural Beech (010)	Plastic
3826	003	● Brown Dot - 20 1/8"	Arctic (059)	Dark Blue (029)	Plastic
3826	006	● Brown Dot - 20 1/8"	Arctic (059)	Light Blue (022)	Plastic
3826	019	● Brown Dot - 20 1/8"	Arctic (059)	Light Green (021)	Plastic

MODEL	ITEM CODE	HEIGHT	FRAME	SEAT COLOR	GLIDES
3826-S	046	● Blue Dot - 18 1/8"	Arctic (059)	Natural Beech (010)	Plastic
3826-S	061	● Special Height - 24"	Arctic (059)	Natural Beech (010)	Plastic
3826-S	129	● Special Height - 24"	Arctic (059)	Dark Blue (029)	Plastic
3826-S	122	● Special Height - 24"	Arctic (059)	Light Blue (022)	Plastic
3826-S	174	● Special Height - 24"	Arctic (059)	Light Green (021)	Plastic
3826-S	076	● Special Height - 30"	Arctic (059)	Natural Beech (010)	Plastic

LUPOSTOOL

Skid stool

The LuPoStool has a welded steel tube frame with a U-shaped skid. The seat shell is made of double-walled polypropylene for comfortable sitting with an air-cushion effect. The stool can be stored on tabletops and is also stackable. The taller two heights come with a footrest.



THE MODELS



MODEL: 3428



MODEL: 3429

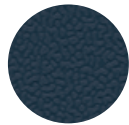
SEAT HEIGHTS

● Blue Dot - 18 1/8"

● 22 1/8"

● 24"

SEAT COLORS



Black Grey
(073)

METAL FINISHES



Arctic
(059)

GLIDES



2-Component



Also pictured
RondoLift-KF: Page 60.

LUPOSTOOL DETAILS

MODEL	ITEM CODE	HEIGHT	BACKREST	FOOTREST	FRAME	SEAT COLOR	GLIDES
3428	059 ● Blue Dot - 18 1/8"	22 1/8"	Yes	No	Arctic (059)	Black Grey (073)	2-Component
3428	073	24"	Yes	Yes	Arctic (059)	Black Grey (073)	2-Component
3428	015	24"	Yes	Yes	Arctic (059)	Black Grey (073)	2-Component

MODEL	ITEM CODE	HEIGHT	BACKREST	FOOTREST	FRAME	SEAT COLOR	GLIDES
3429	046 ● Blue Dot - 18 1/8"	22 1/8"	No	No	Arctic (059)	Black Grey (073)	2-Component
3429	056	24"	No	Yes	Arctic (059)	Black Grey (073)	2-Component
3429	014	24"	No	Yes	Arctic (059)	Black Grey (073)	2-Component

SHIFT+ LANDSCAPE

Soft seating elements

With the Shift+ Landscape seating elements, learning environments and differentiated zones within the classroom can be simply and quickly formed. Both the straight and the 60° curved seating elements are available for QuickShip in two different heights. The Stamskin upholstery is extremely durable and easy to clean.



THE MODELS



MODEL: 9328



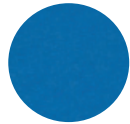
MODEL: 9329

SEAT HEIGHTS

 Red Dot - 15"

 Blue Dot - 18 1/8"

FABRIC COLORS



S864 Dark Blue



S987 Green



S989 Grey

GLIDES



2-Component



Also pictured
Shift+ Transfer: Page 68
Hokki: Page 22

SHIFT+ LANDSCAPE DETAILS

MODEL	ITEM CODE		HEIGHT	FABRIC COLOR	GLIDES	SHAPE
9328	022	●	Red Dot - 15"	S864 Dark Blue	2-Component	Straight
9328	031	●	Red Dot - 15"	S987 Green	2-Component	Straight
9328	002	●	Blue Dot - 18 1/8"	S864 Dark Blue	2-Component	Straight
9328	041	●	Blue Dot - 18 1/8"	S987 Green	2-Component	Straight

MODEL	ITEM CODE		HEIGHT	FABRIC COLOR	GLIDES	SHAPE
9329	011	●	Red Dot - 15"	S864 Dark Blue	2-Component	60°
9329	079	●	Red Dot - 15"	S987 Green	2-Component	60°
9329	287	●	Red Dot - 15"	S989 Grey	2-Component	60°
9329	001	●	Blue Dot - 18 1/8"	S864 Dark Blue	2-Component	60°
9329	080	●	Blue Dot - 18 1/8"	S987 Green	2-Component	60°
9329	288	●	Blue Dot - 18 1/8"	S989 Grey	2-Component	60°

SHIFT+ THUMBPRINT

Mobile, Stackable Desk

The ThumbPrint is an easy to move, lightweight desk with flexible use positions. The convex- or concave-shaped tabletops ensure the tables can be combined in a variety of ways - into circles, rows, groups, and more. ThumbPrint tables increase classroom combination possibilities and open up configurations for a truly agile design.



THE MODELS




MODEL: 1440 (Convex)



MODEL: 1441 (Concave)

DIMENSIONS: 38" x 21 1/4"

TABLE HEIGHTS

-  Yellow Dot - 23 1/4"  Red Dot - 25 1/4"  Green Dot - 28"  Blue Dot - 30"
-

TABLETOP FINISHES



Beech
LIGNOpal
(027)



Maple
LIGNOpal
(028)



White
LIGNOpal
(328)

METAL FINISHES



Arctic
(059)

GLIDES & CASTORS

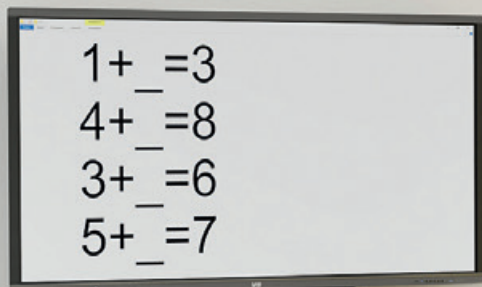


Two 2-Component
Glides

+



Two Castors



VS InteractivePilon

Also pictured

PantoSwing: Page 10

Hokki: Page 22

THUMBPRINT DETAILS

MODEL	ITEM CODE	HEIGHT	FRAME	TABLETOP FINISH	CASTORS/GLIDES
1440	111	● Yellow Dot - 23 1/4"	Arctic (059)	Maple LIGNOpal (028)	2 Castors & 2 2-Component Glides
1440	114	● Yellow Dot - 23 1/4"	Arctic (059)	White LIGNOpal (328)	2 Castors & 2 2-Component Glides
1440	359	● Yellow Dot - 23 1/4"	Arctic (059)	Beech LIGNOpal (027)	2 Castors & 2 2-Component Glides
1440	105	● Red Dot - 25 1/4"	Arctic (059)	Maple LIGNOpal (028)	2 Castors & 2 2-Component Glides
1440	113	● Red Dot - 25 1/4"	Arctic (059)	White LIGNOpal (328)	2 Castors & 2 2-Component Glides
1440	364	● Red Dot - 25 1/4"	Arctic (059)	Beech LIGNOpal (027)	2 Castors & 2 2-Component Glides
1440	106	● Green Dot - 28"	Arctic (059)	Maple LIGNOpal (028)	2 Castors & 2 2-Component Glides
1440	112	● Green Dot - 28"	Arctic (059)	White LIGNOpal (328)	2 Castors & 2 2-Component Glides
1440	371	● Green Dot - 28"	Arctic (059)	Beech LIGNOpal (027)	2 Castors & 2 2-Component Glides
1440	101	● Blue Dot - 30"	Arctic (059)	Maple LIGNOpal (028)	2 Castors & 2 2-Component Glides
1440	103	● Blue Dot - 30"	Arctic (059)	White LIGNOpal (328)	2 Castors & 2 2-Component Glides
1440	376	● Blue Dot - 30"	Arctic (059)	Beech LIGNOpal (027)	2 Castors & 2 2-Component Glides

MODEL	ITEM CODE	HEIGHT	FRAME	TABLETOP FINISH	CASTORS/GLIDES
1441	111	● Yellow Dot - 23 1/4"	Arctic (059)	Maple LIGNOpal (028)	2 Castors & 2 2-Component Glides
1441	114	● Yellow Dot - 23 1/4"	Arctic (059)	White LIGNOpal (328)	2 Castors & 2 2-Component Glides
1441	359	● Yellow Dot - 23 1/4"	Arctic (059)	Beech LIGNOpal (027)	2 Castors & 2 2-Component Glides
1441	105	● Red Dot - 25 1/4"	Arctic (059)	Maple LIGNOpal (028)	2 Castors & 2 2-Component Glides
1441	113	● Red Dot - 25 1/4"	Arctic (059)	White LIGNOpal (328)	2 Castors & 2 2-Component Glides
1441	364	● Red Dot - 25 1/4"	Arctic (059)	Beech LIGNOpal (027)	2 Castors & 2 2-Component Glides
1441	106	● Green Dot - 28"	Arctic (059)	Maple LIGNOpal (028)	2 Castors & 2 2-Component Glides
1441	112	● Green Dot - 28"	Arctic (059)	White LIGNOpal (328)	2 Castors & 2 2-Component Glides
1441	371	● Green Dot - 28"	Arctic (059)	Beech LIGNOpal (027)	2 Castors & 2 2-Component Glides
1441	101	● Blue Dot - 30"	Arctic (059)	Maple LIGNOpal (028)	2 Castors & 2 2-Component Glides
1441	103	● Blue Dot - 30"	Arctic (059)	White LIGNOpal (328)	2 Castors & 2 2-Component Glides
1441	376	● Blue Dot - 30"	Arctic (059)	Beech LIGNOpal (027)	2 Castors & 2 2-Component Glides

LITETABLE-ST

Stackable lightweight table

The LiteTable-ST offers the ultimate flexibility for multi-use spaces and agile classrooms. It has a frame made from welded steel, providing superior strength and longevity. Three heights are available through the QuickShip Program so each student can find their perfect fit. This table is stackable up to 8 high and due to its paired inset and outset legs, can be alternated to allow for continuous rows without gaps between desks.



THE MODELS



MODEL: 21090
DIMENSIONS: 27 5/8" x 21 5/8"

TABLE HEIGHTS

 Red Dot - 25 1/4"

 Green Dot - 28"

 Blue Dot - 30"

TABLETOP FINISHES



Beech
LIGNOpal
(027)



Maple
LIGNOpal
(028)



White
LIGNOpal
(328)

METAL FINISHES



Arctic
(059)

GLIDES & CASTORS



Two 2-Component
Glides

+



Two Castors



Also pictured
JUMPER Air Active: Page 6

LITETABLE-ST DETAILS

MODEL	ITEM CODE	HEIGHT	FRAME	TABLETOP FINISH	CASTORS/GLIDES
21090	054	● Red Dot - 25 1/4"	Arctic (059)	Maple LIGNOpal (028)	2 Castors & 2 2-Component Glides
21090	029	● Red Dot - 25 1/4"	Arctic (059)	White LIGNOpal (328)	2 Castors & 2 2-Component Glides
21090	364	● Red Dot - 25 1/4"	Arctic (059)	Beech LIGNOpal (027)	2 Castors & 2 2-Component Glides
21090	081	● Green Dot - 28"	Arctic (059)	Maple LIGNOpal (028)	2 Castors & 2 2-Component Glides
21090	181	● Green Dot - 28"	Arctic (059)	White LIGNOpal (328)	2 Castors & 2 2-Component Glides
21090	371	● Green Dot - 28"	Arctic (059)	Beech LIGNOpal (027)	2 Castors & 2 2-Component Glides
21090	011	● Blue Dot - 30"	Arctic (059)	Maple LIGNOpal (028)	2 Castors & 2 2-Component Glides
21090	012	● Blue Dot - 30"	Arctic (059)	White LIGNOpal (328)	2 Castors & 2 2-Component Glides
21090	376	● Blue Dot - 30"	Arctic (059)	Beech LIGNOpal (027)	2 Castors & 2 2-Component Glides

FLIPTABLE-RU

Table with folding top

Roll it around. Link them together. Flip it down. Nest it away. The FlipTable-RU has exceptional flexibility, functionality, and durability for classrooms to meeting rooms and everything in between. A two-lever safety mechanism ensures the table is never flipped by accident, and the top locks when horizontal or flipped for added safety.



THE MODELS



MODEL: 21029



MODEL: 21029-S (Writable)

DIMENSIONS: 59 1/8" x 25 5/8"

TABLE HEIGHTS

● Blue Dot - 30"

TABLETOP FINISHES



Maple
LIGNOpal
(028)



White
LIGNOpal
(328)



White
(Writable)

METAL FINISHES



Arctic
(059)

TABLE EDGES



Beige PUR
Edge



Grey PUR
Edge



White KU
Edge

CASTORS





Also pictured
PantoSwing: Page 10
Shift+ Transfer Box: Page 72

FLIPTABLE-RU DETAILS

MODEL	ITEM CODE	HEIGHT	FRAME	TABLETOP FINISH	EDGE
21029	033	● Blue Dot - 30"	Arctic (059)	Maple LIGNOpal (028)	Beige PUR
21029	035	● Blue Dot - 30"	Arctic (059)	White LIGNOpal (328)	Grey PUR
21029-S	034	● Blue Dot - 30"	Arctic (059)	White (Writable)	White KU

THE MODELS (HEIGHT-ADJUSTABLE FLIPTABLE)



MODELS: A2509, A2509-S (Writable)
DIMENSIONS: 63" x 31 1/2"



MODELS: A2510, A2510-S (Writable)
DIMENSIONS: 59" x 25 1/2"

TABLE HEIGHTS

Adjustable from 23 1/4" - 30" or
Adjustable from 29 1/8" - 38"

TABLETOP FINISHES



Beech
LIGNOpal
(027)



Maple
LIGNOpal
(028)



White
LIGNOpal
(328)



White
(Writable)



Arctic
(059)

METAL FINISHES

CASTORS



HEIGHT-ADJUSTABLE FLIPTABLE DETAILS

MODEL	ITEM CODE	HEIGHT	FRAME	TABLETOP FINISH
A2509	059	Adjustable from 23 1/4" - 30"	Arctic (059)	Maple LIGNOpal (028)
A2509	028	Adjustable from 23 1/4" - 30"	Arctic (059)	White LIGNOpal (328)
A2509	077	Adjustable from 23 1/4" - 30"	Arctic (059)	Beech LIGNOpal (027)
A2509-S	443	Adjustable from 23 1/4" - 30"	Arctic (059)	White (Writable)
A2509	074	Adjustable from 29 1/8" - 38"	Arctic (059)	Maple LIGNOpal (028)
A2509	328	Adjustable from 29 1/8" - 38"	Arctic (059)	White LIGNOpal (328)
A2509	027	Adjustable from 29 1/8" - 38"	Arctic (059)	Beech LIGNOpal (027)
A2509-S	444	Adjustable from 29 1/8" - 38"	Arctic (059)	White (Writable)

MODEL	ITEM CODE	HEIGHT	FRAME	TABLETOP FINISH
A2510	059	Adjustable from 23 1/4" - 30"	Arctic (059)	Maple LIGNOpal (028)
A2510	228	Adjustable from 23 1/4" - 30"	Arctic (059)	White LIGNOpal (328)
A2510	077	Adjustable from 23 1/4" - 30"	Arctic (059)	Beech LIGNOpal (027)
A2510-S	443	Adjustable from 23 1/4" - 30"	Arctic (059)	White (Writable)
A2510	074	Adjustable from 29 1/8" - 38"	Arctic (059)	Maple LIGNOpal (028)
A2510	328	Adjustable from 29 1/8" - 38"	Arctic (059)	White LIGNOpal (328)
A2510	027	Adjustable from 29 1/8" - 38"	Arctic (059)	Beech LIGNOpal (027)
A2510-S	444	Adjustable from 29 1/8" - 38"	Arctic (059)	White (Writable)

SHIFT+ FUSIONFLIP

Freeform table with folding top

This easily combined freeform table can be used for the most diverse group sizes. The tables can be pushed together as needed to create spaces for larger groups. The foldable top allows the tables to be nested together to save space when not in use. Four castors provide for problem-free mobility and the tables are light enough to be moved by students of all ages. The FusionFlip has curves that fit all other Shift+ product curves, so it can nest with other desks and tables in an unlimited set of configurations.



THE MODELS



MODEL: 1446



MODEL: 1446-S (Writable)

DIMENSIONS: 55 1/2" x 31"

TABLE HEIGHTS

 Green Dot - 28"

 Blue Dot - 30"

TABLETOP FINISHES



Beech
LIGNOpal
(027)



Maple
LIGNOpal
(028)



White
LIGNOpal
(328)



White
(Writable)

METAL FINISHES



Arctic
(059)

CASTORS





Also pictured
PantoSwing: Page 10
Shift+ Transfer: Page 68

SHIFT+ FUSIONFLIP DETAILS

MODEL	ITEM CODE	HEIGHT	FRAME	TABLETOP FINISH
1446	104	● Green Dot - 28"	Arctic (059)	Maple LIGNOpal (028)
1446	105	● Green Dot - 28"	Arctic (059)	White LIGNOpal (328)
1446	127	● Green Dot - 28"	Arctic (059)	Beech LIGNOpal (027)
1446-S	111	● Green Dot - 28"	Arctic (059)	White (Writable)
1446	101	● Blue Dot - 30"	Arctic (059)	Maple LIGNOpal (028)
1446	103	● Blue Dot - 30"	Arctic (059)	White LIGNOpal (328)
1446	102	● Blue Dot - 30"	Arctic (059)	Beech LIGNOpal (027)
1446-S	443	● Blue Dot - 30"	Arctic (059)	White (Writable)

RONDOLIFT-KF

Height-adjustable sit-at and stand-at table.

The RondoLift table raises the bar for teachers and students. The fully-adjustable tabletop gives it sit-at or stand-at functionality. Lockable castors make it mobile. And the optional tilt mechanism allows it to be stowed in a snap or converted to a projection or display surface. Quick, creative options that help take education up a notch.



THE MODELS



MODELS: 2822,
2822-S (Writable)



MODELS: 2824,
2824-S (Writable), 2827,
2827-S (Writable)



MODEL: 2828



MODEL: 2829

TABLE DIMENSIONS

Ø: 35 1/2" (2824)

Ø: 47 1/4" (2827)

WxD: 39 3/8" x 39 3/8" (2822)

WxD: 51 1/4" x 31 1/2" (2828)

WxD: 47 1/4" x 33 1/8" (2829)

TABLE HEIGHT

Adjustable-height: 27 1/4" - 44 1/2"

TABLETOP FINISHES



Beech
LIGNOpal
(027)



Maple
LIGNOpal
(028)



White
LIGNOpal
(328)



White
(Writable)

METAL FINISHES



Arctic
(059)

CASTORS





Also pictured
PantoMove: Page 14

RONDOLIFT-KF DETAILS

MODEL	ITEM CODE	DIMENSIONS	FRAME	TABLETOP FINISH	HINGED	SHAPE
2822	027	WxD: 39 3/8" x 39 3/8"	Arctic (059)	Beech LIGNOpal (027)	Yes	Square
2822	292	WxD: 39 3/8" x 39 3/8"	Arctic (059)	Maple LIGNOpal (028)	Yes	Square
2822-S	443	WxD: 39 3/8" x 39 3/8"	Arctic (059)	White (Writable)	Yes	Square

MODEL	ITEM CODE	DIMENSIONS	FRAME	TABLETOP FINISH	HINGED	SHAPE
2824	027	Ø: 35 1/2"	Arctic (059)	Beech LIGNOpal (027)	Yes	Round
2824	292	Ø: 35 1/2"	Arctic (059)	Maple LIGNOpal (028)	Yes	Round
2824-S	443	Ø: 35 1/2"	Arctic (059)	White (Writable)	Yes	Round

MODEL	ITEM CODE	DIMENSIONS	FRAME	TABLETOP FINISH	HINGED	SHAPE
2827	027	Ø: 47 1/4"	Arctic (059)	Beech LIGNOpal (027)	Yes	Round
2827	292	Ø: 47 1/4"	Arctic (059)	Maple LIGNOpal (028)	Yes	Round
2827-S	443	Ø: 47 1/4"	Arctic (059)	White (Writable)	Yes	Round

MODEL*	ITEM CODE	DIMENSIONS	FRAME	TABLETOP FINISH	HINGED	SHAPE
2828	001	WxD: 51 1/4" x 31 1/2"	Arctic (059)	Maple LIGNOpal (028)	No	Elliptical
2828	052	WxD: 51 1/4" x 31 1/2"	Arctic (059)	White LIGNOpal (328)	No	Elliptical
2828	057	WxD: 51 1/4" x 31 1/2"	Arctic (059)	Beech LIGNOpal (027)	No	Elliptical

MODEL*	ITEM CODE	DIMENSIONS	FRAME	TABLETOP FINISH	HINGED	SHAPE
2829	005	WxD: 47 1/4" x 33 1/8"	Arctic (059)	Maple LIGNOpal (028)	No	Barrel
2829	063	WxD: 47 1/4" x 33 1/8"	Arctic (059)	White LIGNOpal (328)	No	Barrel
2829	067	WxD: 47 1/4" x 33 1/8"	Arctic (059)	Beech LIGNOpal (027)	No	Barrel

*Models 2828 and 2829 have a single drawer with unified locking to match top laminate color.

NOTE: Models with hinged tops come with 18001 locking.

SHIFT+ INTERACT

Height-adjustable sit-at/stand-at lectern

The Interact has a curved top that fits all other Shift+ product curves, so it can nest with other desks and tables in an unlimited set of configurations. The height can be quickly adjusted from 28" to 45¹/₄", and the castors make it easy to move around the room. A closed book box under the table offers convenient storage on the go.



THE MODELS



MODEL: 1444
DIMENSIONS: 26 ³/₈" x 20"

TABLE HEIGHTS

Adjustable from 28" - 45 ¹/₄"

TABLETOP FINISHES



Beech
LIGNOpal
(027)



Maple
LIGNOpal
(028)



White
LIGNOpal
(328)

METAL FINISHES



Arctic
(059)

CASTORS





Also pictured
PantoSwing: Page 10
Shift+ ThumbPrint: Page 42

SHIFT+ INTERACT DETAILS

MODEL	ITEM CODE	HEIGHT	FRAME	TABLETOP FINISH
1444	101	Adjustable from 28" - 45 1/4"	Arctic (059)	Maple LIGNOpal (028)
1444	103	Adjustable from 28" - 45 1/4"	Arctic (059)	White LIGNOpal (328)
1444	102	Adjustable from 28" - 45 1/4"	Arctic (059)	Beech LIGNOpal (027)

SHIFT+ TRANSFER

Mobile shelving elements & teacher's cabinet

The Transfer mobile shelving elements are available through the QuickShip Program in two shapes – 60° curved and straight. They can be formed into various combinations, as well as used with the seating elements to create separate seating areas. The Shift+ Transfer Teach (teacher's cabinet) equips the teacher with a mobile storage space with a lockable door, and two of the four castors are lockable. As a freely mobile element, it can accompany the teacher anywhere in the room or building.

All Transfer units have bases made from welded steel, providing superior strength and longevity. Stocked elements also include handles and connecting magnets on each side for easy transportation, reconfiguration, and linking.



THE MODELS

Mobile Shelving Elements



MODELS: 45292, 45293



MODELS: 45303, 45317, 45318

Transfer Teach



MODEL: 45319

CABINET DIMENSIONS

WxHxD: 60 1/8" x 36" x 16 3/4" (45292)

WxHxD: 60 1/8" x 43 3/8" x 16 3/4" (45293)

WxHxD: 41 5/8" x 43 3/8" x 20 7/8" (45303)

WxHxD: 41 5/8" x 36" x 16 3/4" (45317)

WxHxD: 41 5/8" x 43 3/8" x 16 3/4" (45318, 45319)

LAMINATE FINISHES



Maple
LIGNOpal
(028)

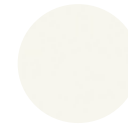


White
LIGNOpal
(328)

METAL FINISHES



Arctic
(059)



White
(091)

CASTORS





Also pictured

PantoMove: Page 14

Shift+ FusionFlip: Page 56

Shift+ Landscape: Page 38

SHIFT+ TRANSFER DETAILS

MODEL	ITEM CODE	HEIGHT	FRAME	LAMINATE FINISH	SHAPE
45292	001	36"	Arctic (059)	Maple LIGNOpal (028)	60°
45292	292	36"	White (091)	White LIGNOpal (328)	60°

MODEL	ITEM CODE	HEIGHT	FRAME	LAMINATE FINISH	SHAPE
45293	002	43 ³ / ₈ "	Arctic (059)	Maple LIGNOpal (028)	60°
45293	022	43 ³ / ₈ "	White (091)	White LIGNOpal (328)	60°

MODEL	ITEM CODE	HEIGHT	FRAME	LAMINATE FINISH	SHAPE
45303	028	43 ³ / ₈ "	Arctic (059)	Maple LIGNOpal (028)	Straight (2-sided)
45303	292	43 ³ / ₈ "	White (091)	White LIGNOpal (328)	Straight (2-sided)

MODEL	ITEM CODE	HEIGHT	FRAME	LAMINATE FINISH	SHAPE
45317	128	36"	Arctic (059)	Maple LIGNOpal (028)	Straight
45317	292	36"	White (091)	White LIGNOpal (328)	Straight

MODEL	ITEM CODE	HEIGHT	FRAME	LAMINATE FINISH	SHAPE
45318	028	43 ³ / ₈ "	Arctic (059)	Maple LIGNOpal (028)	Straight
45318	292	43 ³ / ₈ "	White (091)	White LIGNOpal (328)	Straight

MODEL*	ITEM CODE	HEIGHT	FRAME	LAMINATE FINISH	SHAPE
45319	079	43 ³ / ₈ "	Arctic (059)	Maple LIGNOpal (028)	Straight
45319	292	43 ³ / ₈ "	White (091)	White LIGNOpal (328)	Straight

*With pull out suspension frame and door assembled on the left.

SHIFT+ TRANSFER BOX

Mobile storage cabinets

The Transfer mobile storage cabinets are equipped with strong connecting magnets, allowing them to be combined with any other Shift+ Transfer cabinets to create a variety of shapes and group seating areas. Stocked elements are available in two heights and include handles on each side for easy transportation and reconfiguration.



THE MODELS



MODEL: 45320

MODEL: 45325

CABINET DIMENSIONS

WxHxD: 41 5/8" x 36" x 16 3/4" (45320)
WxHxD: 41 5/8" x 43 3/8" x 16 3/4" (45325)

LAMINATE FINISHES



Maple
LIGNOpal
(028)

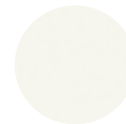


White
LIGNOpal
(328)

METAL FINISHES



Arctic
(059)



White
(091)

BIN COLORS



Anthracite
(015)

CASTORS





SHIFT+ TRANSFER STORAGE DETAILS

MODEL	ITEM CODE	HEIGHT	FRAME	LAMINATE FINISH	BIN SIZE
45320	111	36"	Arctic (059)	Maple LIGNOpal (028)	3"
45320	222	36"	White (091)	White LIGNOpal (328)	3"
45320	115	36"	Arctic (059)	Maple LIGNOpal (028)	6"
45320	232	36"	White (091)	White LIGNOpal (328)	6"

MODEL	ITEM CODE	HEIGHT	FRAME	LAMINATE FINISH	BIN SIZE
45325	111	43 ³ / ₈ "	Arctic (059)	Maple LIGNOpal (028)	3"
45325	222	43 ³ / ₈ "	White (091)	White LIGNOpal (328)	3"
45325	115	43 ³ / ₈ "	Arctic (059)	Maple LIGNOpal (028)	6"
45325	232	43 ³ / ₈ "	White (091)	White LIGNOpal (328)	6"

AGILE SPACES

Creating truly agile learning environments is a vital consideration for modern learning cultures within schools, especially since children can only develop in a healthy and performance-effective way if they get enough physical activity.

This is why schools today are schools in motion: comfortably alternating between sitting and standing when working, dynamic rather than rigid sitting postures, with movement integrated into learning in a variety of ways to keep attention and concentration levels up. Dynamic and ergonomic student furniture makes a fundamental contribution here. Agile furniture can be easily reconfigured to fit an endless variety of educational styles, and can be utilized in classrooms, collaborative spaces, and media centers from K-12 through higher education.

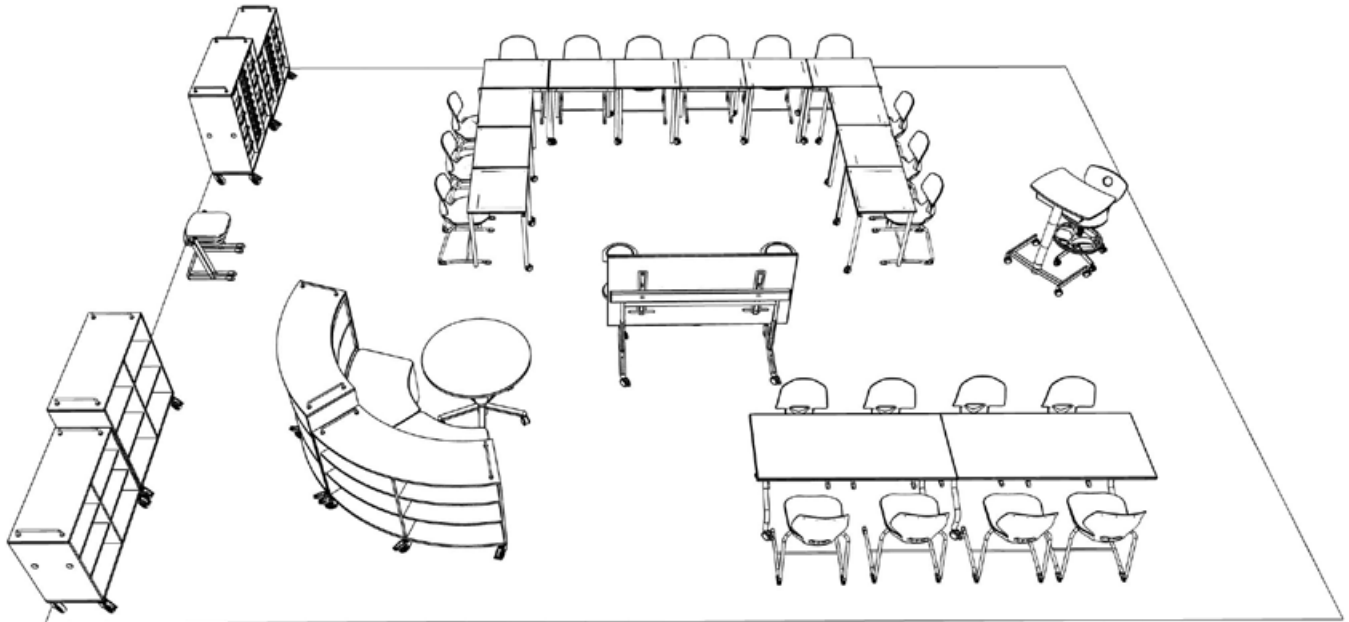
By seamlessly integrating ergonomics, adaptable furniture, layout, and room function, VS products allow learning environments to be highly flexible, yet remain structured and coordinated. This is an important interaction to promote well-being and bolster academic success for students of all ages.

See the following pages for a few sample classroom layouts.

Learn more: www.vsamerica.com/agilespaces

Layout samples shown are for approximately 20-25 students in a 750-800 square foot classroom.

CLASSROOM 1: SEMINAR



PRODUCT LIST & QUANTITY



JUMPER AIR ACTIVE
Quantity: 20



SHIFT+ INTERACT
Quantity: 1



SHIFT+ TRANSFER BOX
Quantity: 2



PANTOMOVE-PLUS
Quantity: 1



LITETABLE-ST
Quantity: 12



SHIFT+ TRANSFER STRAIGHT
Quantity: 2



LUPOSTOOL
Quantity: 2



RONDOLIFT-KF
Quantity: 1



SHIFT+ TRANSFER 60°
Quantity: 2



HOKKI
Quantity: 2



HEIGHT-ADJUSTABLE FLIPTABLE
Quantity: 3

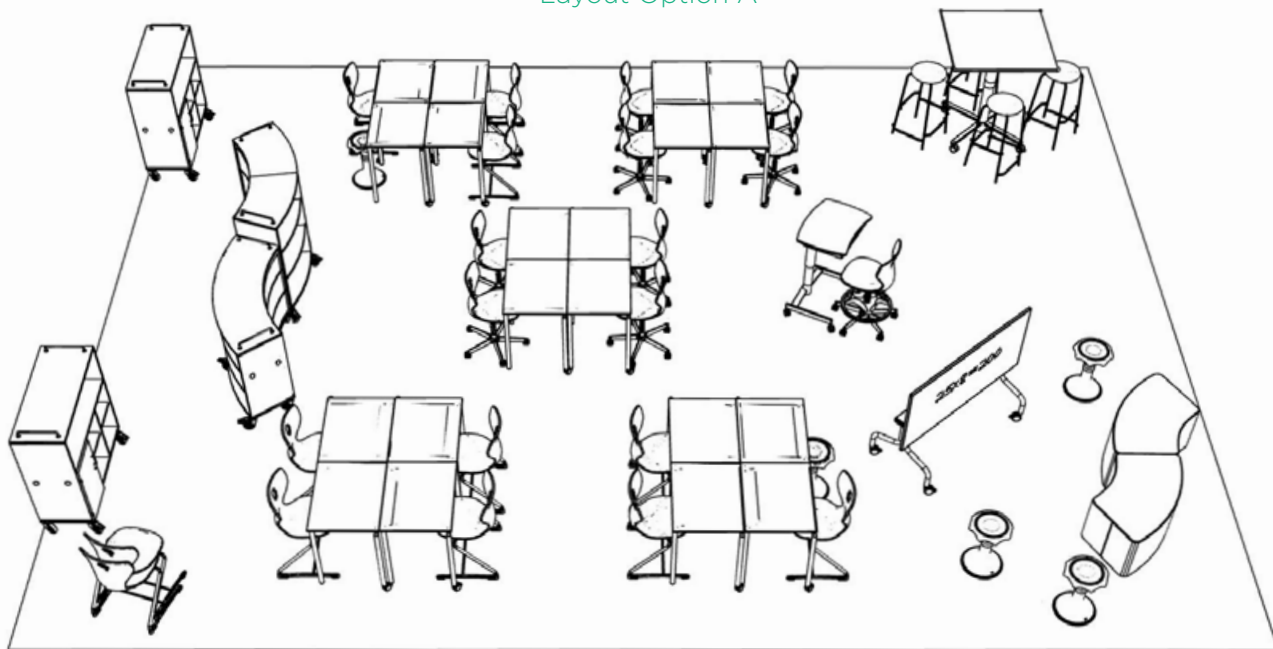


SHIFT+ LANDSCAPE
Quantity: 2

Layout samples shown are for approximately 20-25 students in a 750-800 square foot classroom.

CLASSROOM 2: SMALL GROUP WORK

Layout Option A



PRODUCT LIST & QUANTITY



PANTOSWING
Quantity: 12



HOKKI
Quantity: 5



FLIPTABLE-RU
Quantity: 1



PANTOMOVE
Quantity: 8



SHIFT+ INTERACT
Quantity: 1



**SHIFT+ TRANSFER
TEACH**
Quantity: 2



PANTOMOVE-PLUS
Quantity: 1



LITETABLE-ST
Quantity: 20



SHIFT+ TRANSFER 60°
Quantity: 2



**SOLO (SPECIAL
HEIGHT)**
Quantity: 4



RONDOLIFT-KF
Quantity: 1

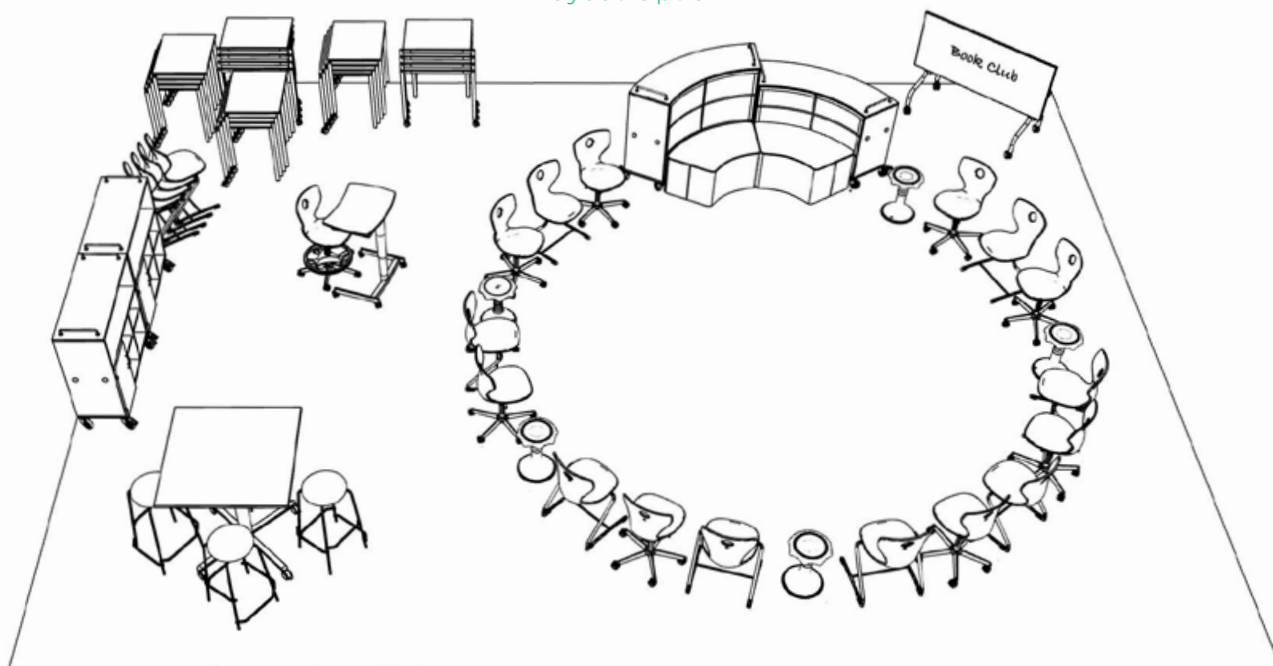


SHIFT+ LANDSCAPE
Quantity: 2

Layout samples shown are for approximately 20-25 students in a 750-800 square foot classroom.

CLASSROOM 2: SOCRATIC

Layout Option B



PRODUCT LIST & QUANTITY



PANTOSWING
Quantity: 12



HOKKI
Quantity: 5



FLIPTABLE-RU
Quantity: 1



PANTOMOVE
Quantity: 8



SHIFT+ INTERACT
Quantity: 1



SHIFT+ TRANSFER TEACH
Quantity: 2



PANTOMOVE-PLUS
Quantity: 1



LITETABLE-ST
Quantity: 20



SHIFT+ TRANSFER 60°
Quantity: 2



SOLO (SPECIAL HEIGHT)
Quantity: 4



RONDOLIFT-KF
Quantity: 1

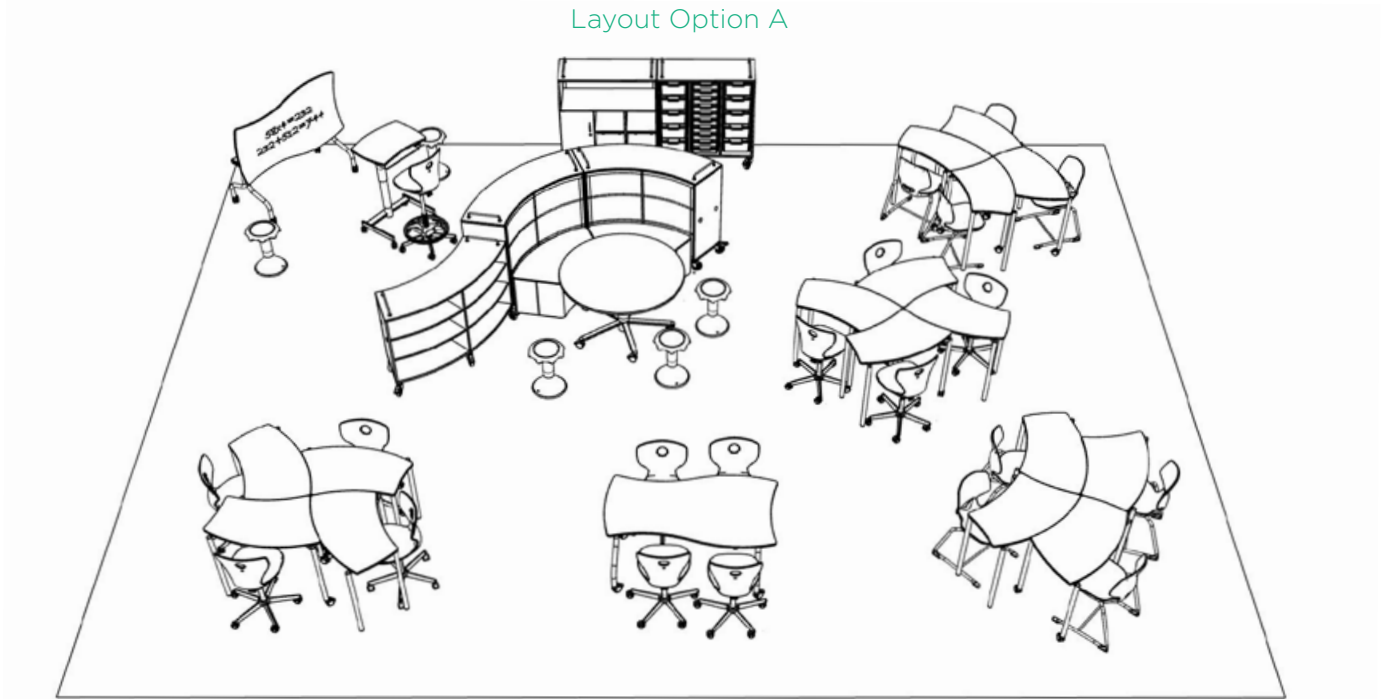


SHIFT+ LANDSCAPE
Quantity: 2

Layout samples shown are for approximately 20-25 students in a 750-800 square foot classroom.

CLASSROOM 3: SMALL GROUP WORK

Layout Option A



PRODUCT LIST & QUANTITY



JUMPER AIR ACTIVE
Quantity: 8



SHIFT+ INTERACT
Quantity: 1



SHIFT+ TRANSFER BOX
Quantity: 1



PANTOMOVE
Quantity: 12



SHIFT+ THUMBPRINT
Quantity: 16



SHIFT+ TRANSFER TEACH
Quantity: 1



PANTOMOVE-PLUS
Quantity: 1



RONDOLIFT-KF
Quantity: 1



SHIFT+ TRANSFER 60°
Quantity: 3



HOKKI
Quantity: 5



SHIFT+ FUSIONFLIP
Quantity: 2

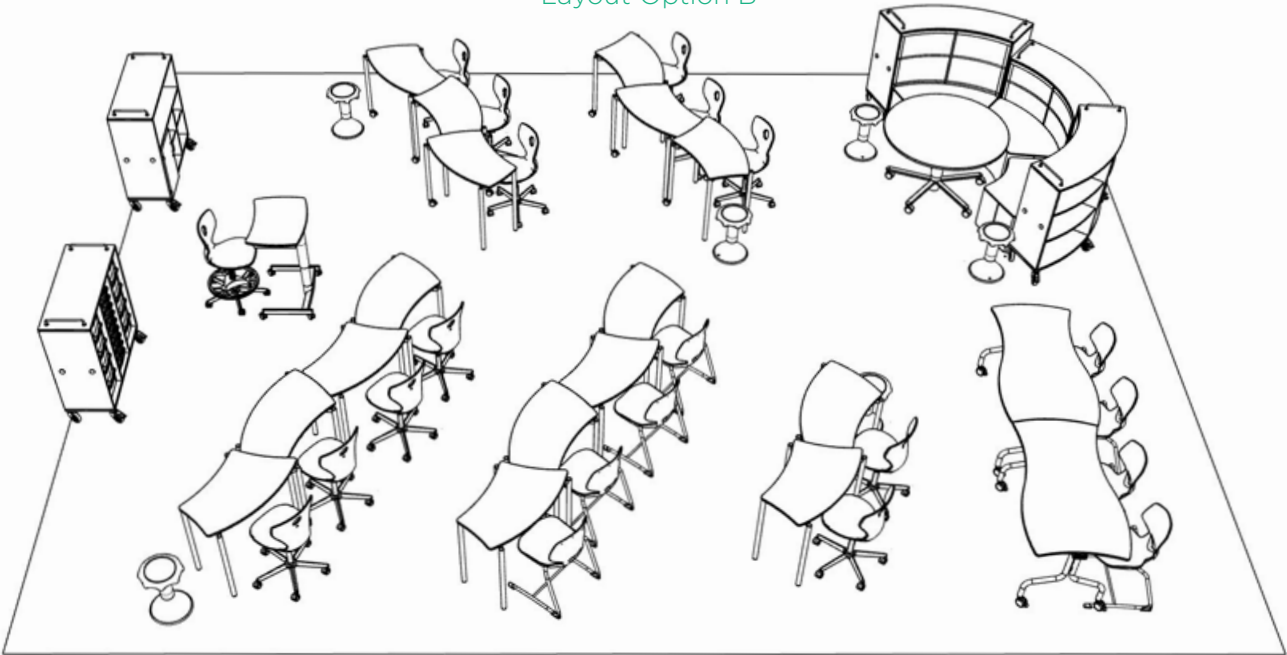


SHIFT+ LANDSCAPE
Quantity: 3

Layout samples shown are for approximately 20-25 students in a 750-800 square foot classroom.

CLASSROOM 3: LECTURE

Layout Option B



PRODUCT LIST & QUANTITY



JUMPER AIR ACTIVE
Quantity: 8



SHIFT+ INTERACT
Quantity: 1



SHIFT+ TRANSFER BOX
Quantity: 1



PANTOMOVE
Quantity: 12



SHIFT+ THUMBPRINT
Quantity: 16



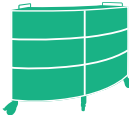
SHIFT+ TRANSFER TEACH
Quantity: 1



PANTOMOVE-PLUS
Quantity: 1



RONDOLIFT-KF
Quantity: 1



SHIFT+ TRANSFER 60°
Quantity: 3



HOKKI
Quantity: 5



SHIFT+ FUSIONFLIP
Quantity: 2

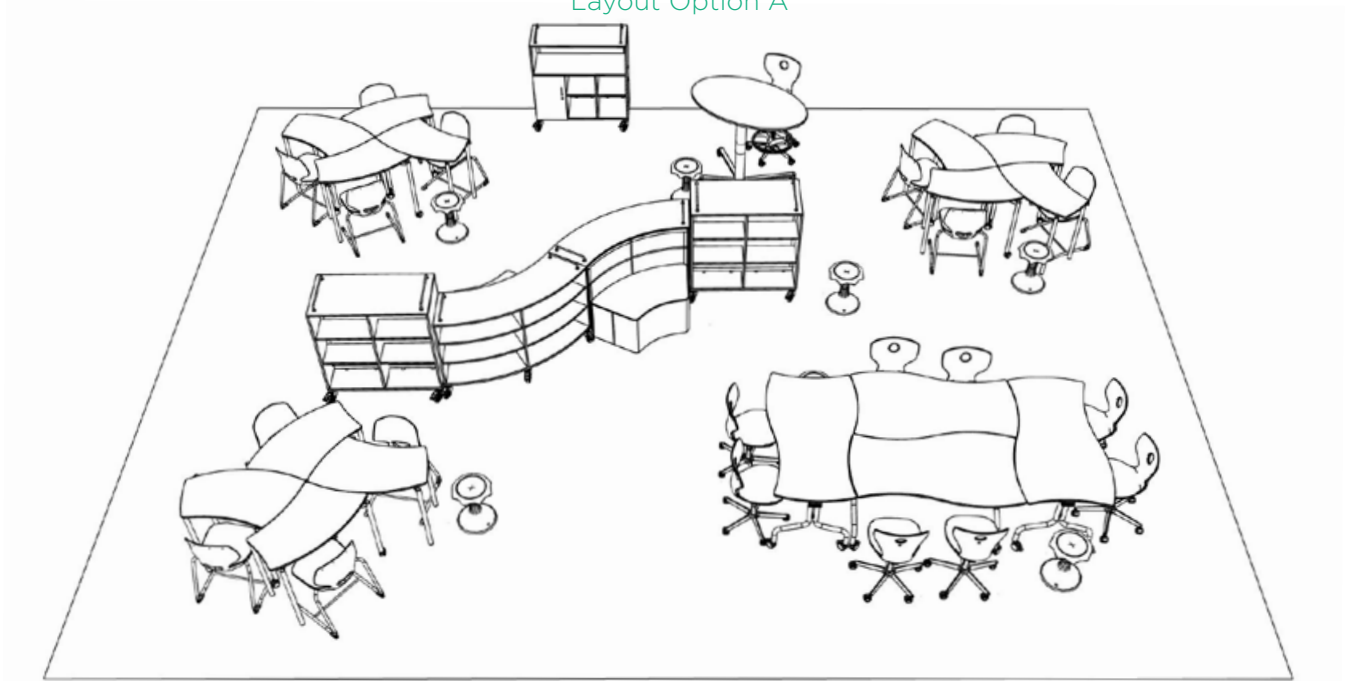


SHIFT+ LANDSCAPE
Quantity: 3

Layout samples shown are for approximately 20-25 students in a 750-800 square foot classroom.

CLASSROOM 4: DIFFERENTIATED ZONES

Layout Option A



PRODUCT LIST & QUANTITY



JUMPER AIR ACTIVE
Quantity: 12



SHIFT+ THUMBPRINT
Quantity: 12



SHIFT+ TRANSFER 60°
Quantity: 2



PANTOMOVE
Quantity: 8



RONDOLIFT-KF
Quantity: 1



SHIFT+ TRANSFER TEACH
Quantity: 1



PANTOMOVE-PLUS
Quantity: 1



SHIFT+ FUSIONFLIP
Quantity: 4



SHIFT+ LANDSCAPE
Quantity: 3



HOKKI
Quantity: 5

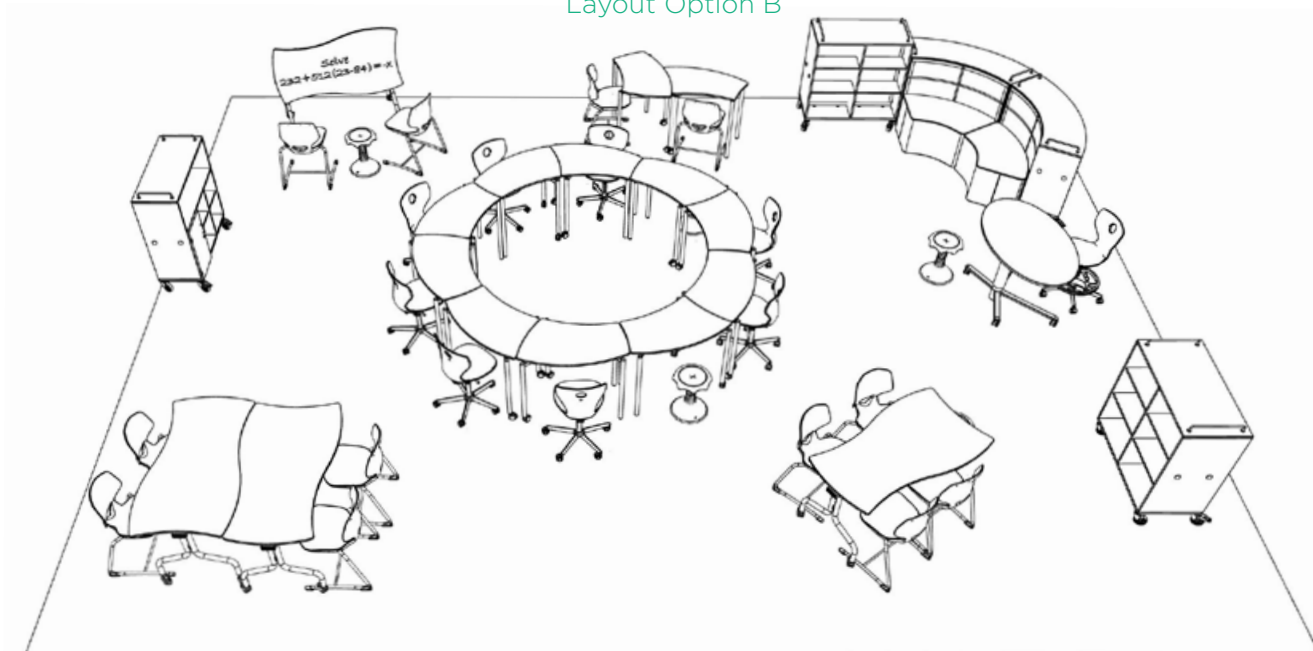


SHIFT+ TRANSFER STRAIGHT 2-SIDED
Quantity: 2

Layout samples shown are for approximately 20-25 students in a 750-800 square foot classroom.

CLASSROOM 4: COLLABORATIVE

Layout Option B



PRODUCT LIST & QUANTITY



JUMPER AIR ACTIVE
Quantity: 12



SHIFT+ THUMBPRINT
Quantity: 12



SHIFT+ TRANSFER 60°
Quantity: 2



PANTOMOVE
Quantity: 8



RONDOLIFT-KF
Quantity: 1



**SHIFT+ TRANSFER
TEACH**
Quantity: 1



PANTOMOVE-PLUS
Quantity: 1



SHIFT+ FUSIONFLIP
Quantity: 4



SHIFT+ LANDSCAPE
Quantity: 3



HOKKI
Quantity: 5



**SHIFT+ TRANSFER
STRAIGHT 2-SIDED**
Quantity: 2

Layout samples shown are for approximately 20-25 students in a 750-800 square foot classroom.



VS AMERICA 2020 QUICKSHIP PROGRAM



VS America, Inc. | 1940 Abbott St. | Charlotte, NC 28203
704.378.6500 | www.vsamerica.com

 facebook.com/vsamericainc  twitter.com/vsamerica
 instagram.com/vs_america  youtube.com/vsamericainc

art. no. CQS 3.20 V01