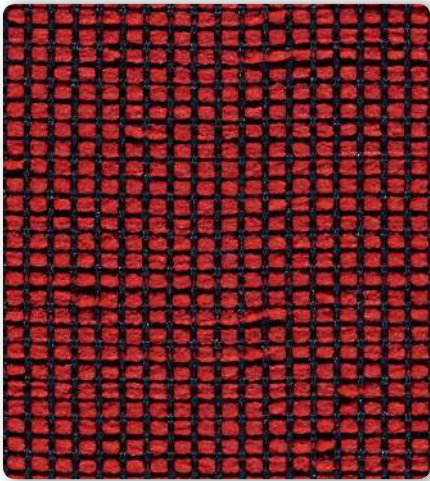
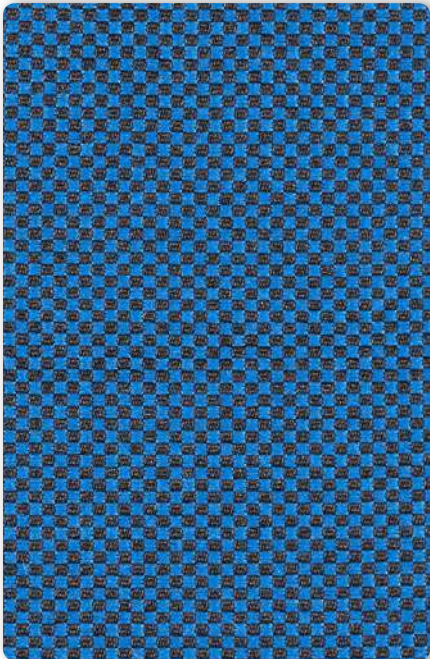


Versa Collection





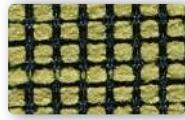
DYNAMIC Cardinal



DICE Electric Blue



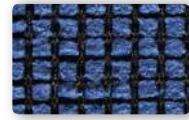
STRIVE Ebony



Leaf



Sky



Marine



Natural



Carrot



Cardinal



Chalk



Dust



Ash



Desert



Lemon



Apple



Aqua



Ocean



Navy



Tangerine



Fire



Grape



Fog



Nickel



Onyx



Royal



Citrus



Crimson



Sea Green



Lagoon



Pacific



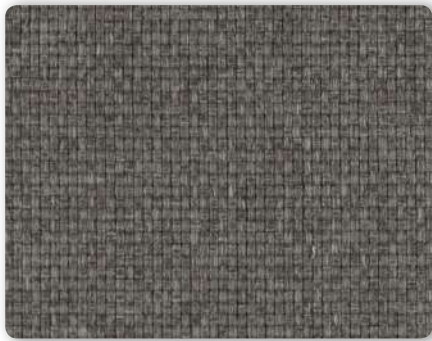
Shell



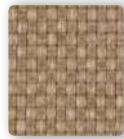
Smoky



Ebony



SPICE Caraway



Nutmeg



Fire



Apple



Electric Blue



Caraway



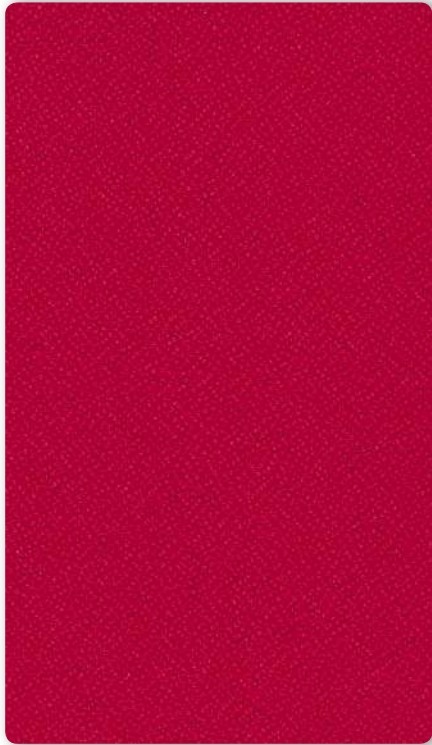
Chai



Navy



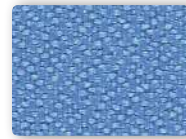
Peppercorn



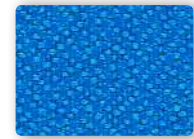
POP Fire



Aqua



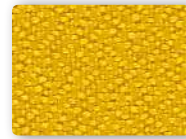
Ocean



Electric Blue



Tangerine



Lemon



Apple



Raspberry



Maroon



Grape



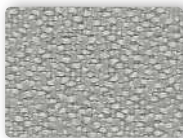
Desert



Cafe



Rootbeer



Fog



Nickel



Smoky



Onyx



Navy



SUGAR Electric Blue



Desert



Apple



Fire



Kiss



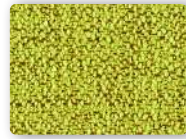
Navy



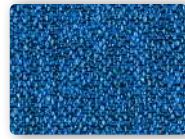
Licorice



BURST Quartz



Apple



Electric Blue



Pacific



Papaya



Scarlet



Concord



Cornerstone



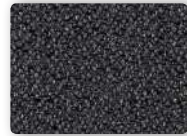
Nutmeg



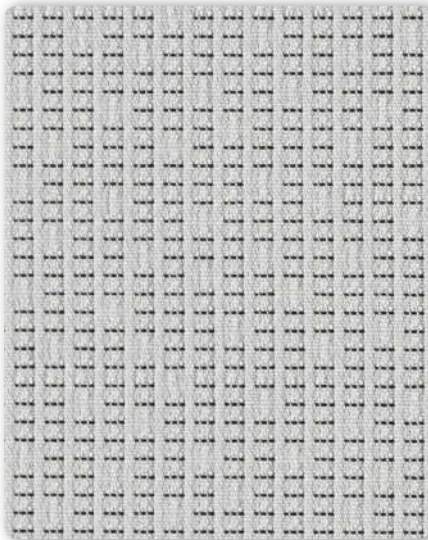
Mustard



Quartz



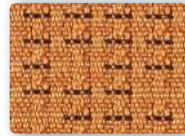
Anthracite



DASH Cloud



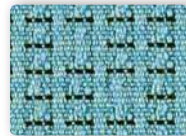
Lime



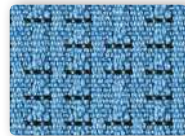
Squash



Flame



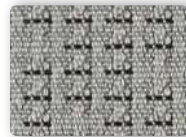
Tiffany



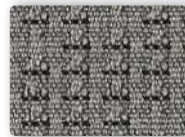
Sky



Midnight



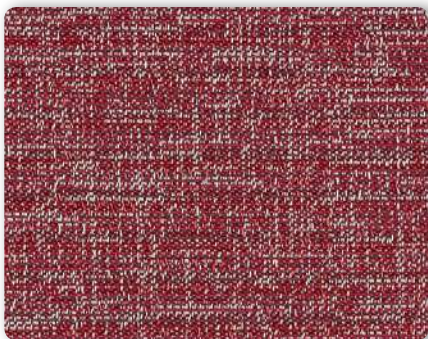
Dove



Fossil



Jet



MOTION Scarlet



Grass



Peacock



Sapphire



Paprika



Scarlet



Grape



Oatmeal



Mist



Graphite



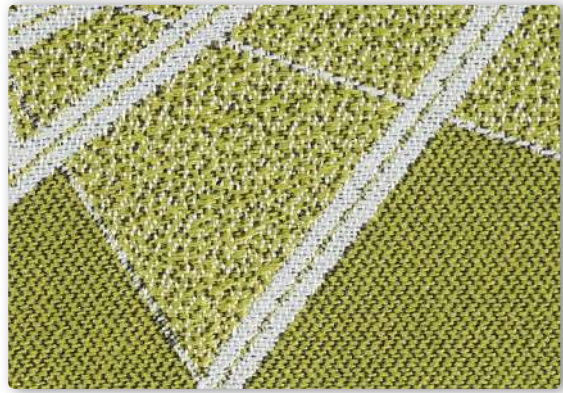
Carbon



Midnight



RIVAL Electric Blue



Apple



Tangerine



Fire



Navy



Nickel








Graphite

specification and technical information

Pattern	Content	Abrasion Resistance (Double Rubs)	Finish	CAL 133*	Cleaning Code	Grade
Burst	100% Polyester	100,000	Clean Coat	133	WS	3
Dash**	94% Post-Consumer Recycled Polyester, 6% Pre-Consumer Recycled Polyester	100,000	Clean Coat	133	WS BC (1:10)	1
Dice†	53% Pre-Consumer Recycled Polyester, 47% Post-Consumer Recycled Polyester	100,000	Clean Coat	133	WS	2
Dynamic†	60% Polyester, 40% Post-Consumer Recycled Polyester	100,000	Clean Coat	133	WS	2
Motion	57% Post-Consumer Recycled Polyester, 19% Pre-Consumer Recycled Polyester, 12% Pre-Consumer Recycled Nylon, 12% Nylon	100,000	Crypton®	133	WS	3
Pop	100% Post-Consumer Recycled Polyester	200,000+	Water Repellent	133	WS	2
Rival†	100% Post-Consumer Recycled Polyester	100,000	Clean Coat	133	WS	3
Spice	100% Polyester	75,000	Water Repellent	133	WS	1
Strive	75% Pre-Consumer Recycled Polyester, 25% Post-Consumer Recycled Polyester	95,000	Clean Coat	133	WS	2
Sugar	100% Polyester	120,000	Water Repellent	133	WS	1

** Healthier Hospitals Compliant

† Not approved for use on Prava

These patterns meet or exceed these ACT Performance standards for upholstery:     

icon upholstery definitions



Fire Retardancy

Flammability testing determines a fabric's resistance to burning. Passes Cal 117.



Colorfastness to Wet and Dry Crocking

The rubbing off of color from fabric onto clothing, hands or other materials and can occur under wet or dry conditions. Passes AATCC 8-1974 Dry Crocking, Class 4 minimum, Wet Crocking, Class 3 minimum.



Colorfastness to Light

The degree to which fabric will retain its color when exposed to light. Passes AATCC 16A-1974 or AATCC 16E-1976. Class 4 minimum at 40 hours. Note: Class 4 minimum at 60 hours is recommended for direct sunlight exposure.



Physical Properties

Brush Pill Test to determine a fabric's pilling, Breaking/Tensile Strength Test determines the ability of a fabric to withstand tension without breaking or tearing. Seam Slippage Test determines the pulling apart of fabrics at the seams. Passes Brush Pill ASTM D3511, 3-4 minimum, Breaking Strength ASTM D3597-D1682-64 (1975) 50 lbs. minimum in warp & weft, Seam Slippage ASTM D3597-D434-75 25 lbs. minimum in warp & weft.



Abrasion

The ability of a fabric to withstand damage from wear and rubbing. Passes Heavy Duty Contract ASTM 3597 modified (No.10 cotton duck); 30,000 double rubs Wyzenbeek Method or ASTM 4966 modified (with 21 oz. wt.); 40,000 rubs Martindale Method.



CAL 133

These fabrics can be used in combination with other designated SitOnIt Seating and IDEON components to meet the California Technical Bulletin 133 standard for furniture flammability. Cal 133 has been tested and approved for SitOnIt and IDEON products.

Cleaning Codes

BC: Bleach Cleanable. Bleach Cleanability is desirable for any fabric that may need to be disinfected or sterilized.

WS: Clean with water-based cleaning agents, foam or pure, water free solvents (Energine, Carbona, Renuzit or other similar products). Vacuuming or light brushing is recommended to prevent dust or soil buildup.

Finish Definitions

Clean Coat A topical finish that creates an invisible protection which prevents liquids or stains from penetrating the fiber which makes it much easier to remove the soils and stains.

Water Repellent A finish that reduces the risk of water or other liquids penetrating through the material and soiling the foam of the product.

Memo Samples To order samples, call 714.995.4800 or contact your local SitOnIt Seating/IDEON sales rep.

NOTE: Multiple factors affect fabric durability and appearance retention, including end-user application and proper maintenance. Wyzenbeek results above 100,000 double rubs have not been shown to be an indicator or increased lifespan.

