

### GOOD

#### Eppa™

- 10.5" height adjustment range
- 20.0" arm extension
- 4.0" arm retraction
- ±90° monitor tilt
- ±360° VESA rotation
- Monitor swivel stop ±90°
- 2.2 lbs.–17.6 lbs. weight capacity
- Finger touch dynamic height adjustment
- VESA quick mount

#### Eppa2

- 10.5" height adjustment range
- 20.0" arm extension
- 4.0" arm retraction
- ±90° monitor tilt
- ±360° VESA rotation
- Monitor swivel stop ±90°
- 2.2 lbs.–17.6 lbs. weight capacity (per arm)
- Finger touch dynamic height adjustment
- VESA quick mount
- 39.0" max. monitor width

### BETTER

#### Edge2®

- 12.0" height adjustment range
- 23.5" arm extension
- 4.1" arm retraction
- ±90° monitor tilt
- ±90° VESA rotation
- 6.5 lbs.–17.6 lbs. weight capacity (per arm)
- Finger touch dynamic height adjustment
- 180° lock-out feature
- VESA quick release
- 32.0" max. monitor width

#### Edge2-MS

- 10.8" height adjustment range
- 17.3" arm extension
- 6.7" arm retraction
- +80°/-60° monitor tilt
- ±90° VESA rotation
- 4.4 lbs.–15.4 lbs. weight capacity (per arm)
- Finger touch dynamic height adjustment
- 180° lock-out feature
- VESA quick release
- 28.0" max. monitor width
- Sliders provide 9.0" of addtl horizontal adjustability

Model #

Eppa-SLV

List price

**\$225**

Model #

EPPA2-SLV

List price

**\$424**

Model #

Edge2-\_\_\_

List price

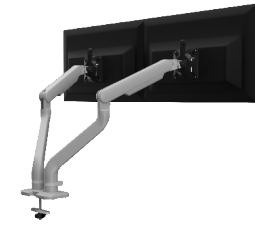
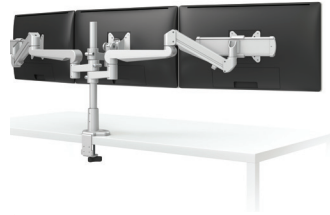
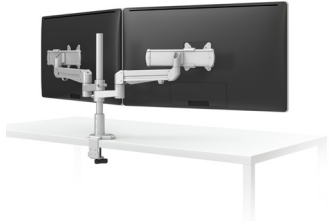
**\$705**

Model #

Edge2-MS-\_\_\_

List price

**\$705**



### BEST

#### Evolve2-MS

- 21.2" arm extension
- 6.7" arm retraction
- +80°/-60° monitor tilt
- ±90° VESA rotation
- 4.4lbs.–15.4lbs. weight capacity (per arm)
- 180° lock-out feature
- VESA quick release
- 18.0" pole height
- 32.0" max. monitor width
- Sliders provide 8.5" of addt'l horizontal adjustability

#### Evolve3-FMS

- 26.8" outside arm extension
- 6.0" center arm extension
- 4.0" arm retraction
- +90°/-25° monitor tilt
- ±90° VESA rotation
- 0.0 lbs.–20.0 lbs. weight capacity (middle arm)
- 4.4 lbs.–15.4 lbs. weight capacity (per outside arms)
- 180° lock-out feature
- VESA quick release
- 18.0" pole height
- 24.5" max. monitor width
- Sliders provide 8.5" of addt'l horizontal adjustability

### BEST

#### Kata

- 14.0" height adjustment range
- 24.6" arm extension
- 5.5" arm retraction
- +90°/-25° monitor tilt
- ±90° VESA rotation
- 4lbs.–20lbs. weight capacity (per arm)
- 180° lock-out feature
- VESA quick release
- Tension adjustment indicator

#### Kata2

- 14.0" height adjustment range
- 24.6" arm extension
- 5.5" arm retraction
- +90°/-25° monitor tilt
- ±90° VESA rotation
- 4lbs.–20lbs. weight capacity (per arm)
- 180° lock-out feature
- VESA quick release
- 32.0" max. monitor width
- Tension adjustment indicator

Model #    Evolve2-MS-\_\_\_ **List price \$819**

Model #    Evolve3-FMS-\_\_\_ **List price \$1,073**

Model #    KATA-DC-\_\_\_ **List price \$400**  
   KATA-GM-\_\_\_ **List price \$400**

Model #    KATA2-DC-\_\_\_ **List price \$752**  
   KATA2-GM-\_\_\_ **List price \$752**