

## Construction:

- Environmentally friendly, California TB117 Compliant Foam
- Nylon Webbing in Seat
- 2.2 pound density, 75 pound compression foam
- India Tape utilized in seams, bed bug proof stitching
- Solid Canadian Hardwood Frame with 3/4" Canadian Plywood components
- Solid Hardwood base
- Wood Frame Joins are glued and Stapled
- Back Springs are covered in fabric to prevent damage to foam

## Upholstery:

The Ace Collection supports the Flexxform graded-in program for Coated, Woven, or Leather Upholsteries. For upholstery not included in the graded-in program, please contact Customer Service for pricing. To view the list of unsuitable upholstery for the Ace collection please see the last page of the graded in program.

## Features:

- Available in Child or Adult sizes
- Modular Lounge furniture for maximum configurability
- Available with or without Arms
- Meets or exceeds ANSI/BIFMA Standards
- Comes standard with Steel legs

## Options:

- Contrasting upholstery
- Wood legs, or steel sled base legs available
- Moisture Barrier
- Ganging Brackets
- Power Options
- Tablet Arms (Armed chairs only, & not available on any Jr. sizes)
- TB133 Foam

## Warranty:

The Ace Collection is covered under Flexxform's Lifetime Warranty Guarantee. For more information visit [www.flexxform.co/warranty](http://www.flexxform.co/warranty)



**Ace One Seat w/ Arms**  
**ACEA1**

|               |        |
|---------------|--------|
| Width         | 29"    |
| Depth         | 28"    |
| Height        | 32"    |
| Seat Height   | 18"    |
| COM YD - Back | 2      |
| COM YD - Seat | 1      |
| COM YD - Arms | 2      |
| COM YD - Full | 5      |
| Cubic Feet    | 16     |
| Weight        | 70 lbs |



**Ace One Seat w/ Back**  
**ACEB1**

|               |        |
|---------------|--------|
| Width         | 23"    |
| Depth         | 28"    |
| Height        | 32"    |
| Seat Height   | 18"    |
| COM YD - Back | 2      |
| COM YD - Seat | 1      |
| COM YD - Arms | -      |
| COM YD - Full | 3      |
| Cubic Feet    | 12     |
| Weight        | 65 lbs |



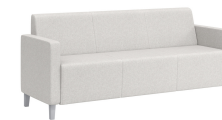
**Ace Two Seat w/ Arms**  
**ACEA2**

|               |        |
|---------------|--------|
| Width         | 53"    |
| Depth         | 28"    |
| Height        | 32"    |
| Seat Height   | 18"    |
| COM YD - Back | 2.5    |
| COM YD - Seat | 2      |
| COM YD - Arms | 2      |
| COM YD - Full | 6.5    |
| Cubic Feet    | 28     |
| Weight        | 90 lbs |



**Ace Two Seat w/ Back**  
**ACEB2**

|               |        |
|---------------|--------|
| Width         | 45"    |
| Depth         | 28"    |
| Height        | 32"    |
| Seat Height   | 18"    |
| COM YD - Back | 2.5    |
| COM YD - Seat | 2      |
| COM YD - Arms | -      |
| COM YD - Full | 4.5    |
| Cubic Feet    | 23     |
| Weight        | 75 lbs |



**Ace Three Seat w/ Arms**  
**ACEA3**

|               |         |
|---------------|---------|
| Width         | 76"     |
| Depth         | 28"     |
| Height        | 32"     |
| Seat Height   | 18"     |
| COM YD - Back | 3.5     |
| COM YD - Seat | 3       |
| COM YD - Arms | 2       |
| COM YD - Full | 8.5     |
| Cubic Feet    | 41      |
| Weight        | 110 lbs |



**Ace Three Seat w/ Back**  
**ACEB3**

|               |         |
|---------------|---------|
| Width         | 69"     |
| Depth         | 28"     |
| Height        | 32"     |
| Seat Height   | 18"     |
| COM YD - Back | 3.5     |
| COM YD - Seat | 3       |
| COM YD - Arms | -       |
| COM YD - Full | 6.5     |
| Cubic Feet    | 37      |
| Weight        | 110 lbs |



**Ace Spacer Bench**  
**ACESB**

|               |        |
|---------------|--------|
| Width         | 23"    |
| Depth         | 28"    |
| Height        | 18"    |
| Seat Height   | 18"    |
| COM YD - Back | -      |
| COM YD - Seat | 2      |
| COM YD - Arms | -      |
| COM YD - Full | 2      |
| Cubic Feet    | 7      |
| Weight        | 45 lbs |



**Ace Corner Bench**  
**ACESB1**

|               |        |
|---------------|--------|
| Width         | 28"    |
| Depth         | 28"    |
| Height        | 18"    |
| Seat Height   | 18"    |
| COM YD - Back | -      |
| COM YD - Seat | 2      |
| COM YD - Arms | -      |
| COM YD - Full | 2      |
| Cubic Feet    | 9      |
| Weight        | 45 lbs |



**Ace Two Seat Bench**  
**ACESB2**

|               |        |
|---------------|--------|
| Width         | 46"    |
| Depth         | 28"    |
| Height        | 18"    |
| Seat Height   | 18"    |
| COM YD - Back | -      |
| COM YD - Seat | 3      |
| COM YD - Arms | -      |
| COM YD - Full | 3      |
| Cubic Feet    | 13.5   |
| Weight        | 60 lbs |



**Ace Three Seat Bench**  
**ACESB3**

|               |        |
|---------------|--------|
| Width         | 69"    |
| Depth         | 28"    |
| Height        | 18"    |
| Seat Height   | 18"    |
| COM YD - Back | -      |
| COM YD - Seat | 4      |
| COM YD - Arms | -      |
| COM YD - Full | 4      |
| Cubic Feet    | 20     |
| Weight        | 75 lbs |



**Ace 30° Inside Curve**  
**ACEC30BI**

|               |        |
|---------------|--------|
| Width         | 35"    |
| Depth         | 28"    |
| Height        | 32"    |
| Seat Height   | 18"    |
| COM YD - Back | 2      |
| COM YD - Seat | 2      |
| COM YD - Arms | -      |
| COM YD - Full | 4      |
| Cubic Feet    | 19     |
| Weight        | 61 lbs |



**Ace 30° Outside Curve**  
**ACEC30BO**

|               |        |
|---------------|--------|
| Width         | 35"    |
| Depth         | 28"    |
| Height        | 32"    |
| Seat Height   | 18"    |
| COM YD - Back | 2      |
| COM YD - Seat | 2      |
| COM YD - Arms | -      |
| COM YD - Full | 3.5    |
| Cubic Feet    | 19     |
| Weight        | 52 lbs |



**Ace 45° Inside Curve**  
**ACEC45BI**

|               |        |
|---------------|--------|
| Width         | 41"    |
| Depth         | 28"    |
| Height        | 32"    |
| Seat Height   | 18"    |
| COM YD - Back | 2.5    |
| COM YD - Seat | 2      |
| COM YD - Arms | -      |
| COM YD - Full | 4.5    |
| Cubic Feet    | 22     |
| Weight        | 65 lbs |



**Ace 45° Outside Curve**  
**ACEC45BO**

|               |        |
|---------------|--------|
| Width         | 38.5"  |
| Depth         | 28"    |
| Height        | 32"    |
| Seat Height   | 18"    |
| COM YD - Back | 2      |
| COM YD - Seat | 2      |
| COM YD - Arms | -      |
| COM YD - Full | 4      |
| Cubic Feet    | 21     |
| Weight        | 52 lbs |



**Ace 60° Inside Curve**  
**ACEC60BI**

|               |         |
|---------------|---------|
| Width         | 67.5"   |
| Depth         | 28"     |
| Height        | 32"     |
| Seat Height   | 18"     |
| COM YD - Back | 4.5     |
| COM YD - Seat | 2.5     |
| COM YD - Arms | -       |
| COM YD - Full | 7       |
| Cubic Feet    | 41      |
| Weight        | 100 lbs |



**Ace 60° Outside Curve**  
**ACEC60BO**

|               |        |
|---------------|--------|
| Width         | 67.5"  |
| Depth         | 28"    |
| Height        | 32"    |
| Seat Height   | 18"    |
| COM YD - Back | 4      |
| COM YD - Seat | 3      |
| COM YD - Arms | -      |
| COM YD - Full | 7      |
| Cubic Feet    | 41     |
| Weight        | 92 lbs |



**Ace 90° Inside Curve**  
**ACEC90BI**

|               |         |
|---------------|---------|
| Width         | 74"     |
| Depth         | 28"     |
| Height        | 32"     |
| Seat Height   | 18"     |
| COM YD - Back | 5       |
| COM YD - Seat | 3.5     |
| COM YD - Arms | -       |
| COM YD - Full | 8       |
| Cubic Feet    | 48      |
| Weight        | 107 lbs |



**Ace 90° Outside Curve**  
**ACEC90BO**

|               |        |
|---------------|--------|
| Width         | 68.5"  |
| Depth         | 28"    |
| Height        | 32"    |
| Seat Height   | 18"    |
| COM YD - Back | 4      |
| COM YD - Seat | 3.5    |
| COM YD - Arms | -      |
| COM YD - Full | 7      |
| Cubic Feet    | 43     |
| Weight        | 84 lbs |



**Ace 30° Bench**  
**ACEC30**

|               |        |
|---------------|--------|
| Width         | 35"    |
| Depth         | 28"    |
| Height        | 18"    |
| Seat Height   | 18"    |
| COM YD - Back | -      |
| COM YD - Seat | 2.5    |
| COM YD - Arms | -      |
| COM YD - Full | 2.5    |
| Cubic Feet    | 11     |
| Weight        | 33 lbs |



**Ace 45° Bench**  
**ACEC45**

|               |        |
|---------------|--------|
| Width         | 41.5"  |
| Depth         | 28"    |
| Height        | 18"    |
| Seat Height   | 18"    |
| COM YD - Back | -      |
| COM YD - Seat | 3      |
| COM YD - Arms | -      |
| COM YD - Full | 3      |
| Cubic Feet    | 13     |
| Weight        | 40 lbs |



**Ace 60° Bench**  
**ACEC60**

|               |        |
|---------------|--------|
| Width         | 67.5"  |
| Depth         | 28"    |
| Height        | 18"    |
| Seat Height   | 18"    |
| COM YD - Back | -      |
| COM YD - Seat | 3.5    |
| COM YD - Arms | -      |
| COM YD - Full | 3.5    |
| Cubic Feet    | 24     |
| Weight        | 61 lbs |



**Ace 90° Bench**  
**ACEC90**

|               |        |
|---------------|--------|
| Width         | 74"    |
| Depth         | 28"    |
| Height        | 18"    |
| Seat Height   | 18"    |
| COM YD - Back | -      |
| COM YD - Seat | 4      |
| COM YD - Arms | -      |
| COM YD - Full | 4      |
| Cubic Feet    | 27     |
| Weight        | 63 lbs |



**Ace 90° Corner Bench**  
**ACE90CB**

|               |        |
|---------------|--------|
| Width         | 31.25" |
| Depth         | 28"    |
| Height        | 18"    |
| Seat Height   | 18"    |
| COM YD - Back | -      |
| COM YD - Seat | 3      |
| COM YD - Arms | -      |
| COM YD - Full | 3      |
| Cubic Feet    | 12     |
| Weight        | 49 lbs |



**Ace Chaise**  
**ACEC**

|               |         |
|---------------|---------|
| Width         | 23"     |
| Depth         | 70"     |
| Height        | 32"     |
| Seat Height   | 18"     |
| COM YD - Back | 3.5     |
| COM YD - Seat | 3       |
| COM YD - Arms | -       |
| COM YD - Full | 6       |
| Cubic Feet    | 30      |
| Weight        | 135 lbs |



**Jr. Ace One Seat w/ Back**  
**ACEJB1**

|               |        |
|---------------|--------|
| Width         | 23"    |
| Depth         | 28"    |
| Height        | 28"    |
| Seat Height   | 14"    |
| COM YD - Back | 2      |
| COM YD - Seat | 1      |
| COM YD - Arms | -      |
| COM YD - Full | 3      |
| Cubic Feet    | 10.5   |
| Weight        | 49 lbs |



**Jr. Ace Two Seat w/ Back**  
**ACEJB2**

|               |        |
|---------------|--------|
| Width         | 45"    |
| Depth         | 28"    |
| Height        | 28"    |
| Seat Height   | 14"    |
| COM YD - Back | 2.5    |
| COM YD - Seat | 2      |
| COM YD - Arms | -      |
| COM YD - Full | 4.5    |
| Cubic Feet    | 20.5   |
| Weight        | 56 lbs |



**Jr. Ace Three Seat w/ Back**  
**ACEJB3**

|               |        |
|---------------|--------|
| Width         | 69"    |
| Depth         | 28"    |
| Height        | 28"    |
| Seat Height   | 14"    |
| COM YD - Back | 3.5    |
| COM YD - Seat | 3      |
| COM YD - Arms | -      |
| COM YD - Full | 6.5    |
| Cubic Feet    | 19     |
| Weight        | 83 lbs |



**Jr. Ace Spacer Bench**  
**ACEJSB**

|               |        |
|---------------|--------|
| Width         | 23"    |
| Depth         | 28"    |
| Height        | 14"    |
| Seat Height   | 14"    |
| COM YD - Back | -      |
| COM YD - Seat | 2      |
| COM YD - Arms | -      |
| COM YD - Full | 2      |
| Cubic Feet    | 5      |
| Weight        | 45 lbs |



**Jr. Ace Corner Bench**  
**ACEJSB1**

|               |        |
|---------------|--------|
| Width         | 28"    |
| Depth         | 28"    |
| Height        | 14"    |
| Seat Height   | 14"    |
| COM YD - Back | -      |
| COM YD - Seat | 2      |
| COM YD - Arms | -      |
| COM YD - Full | 2      |
| Cubic Feet    | 7      |
| Weight        | 47 lbs |



**Jr. Ace Two Seat Bench**  
**ACEJSB2**

|               |        |
|---------------|--------|
| Width         | 46"    |
| Depth         | 28"    |
| Height        | 14"    |
| Seat Height   | 14"    |
| COM YD - Back | -      |
| COM YD - Seat | 3      |
| COM YD - Arms | -      |
| COM YD - Full | 3      |
| Cubic Feet    | 10.5   |
| Weight        | 60 lbs |



**Jr. Ace Three Seat Bench**  
ACEJSB3

|               |        |
|---------------|--------|
| Width         | 69"    |
| Depth         | 28"    |
| Height        | 14"    |
| Seat Height   | 14"    |
| COM YD - Back | -      |
| COM YD - Seat | 4      |
| COM YD - Arms | -      |
| COM YD - Full | 4      |
| Cubic Feet    | 15.5   |
| Weight        | 75 lbs |



**Jr. Ace 30° Inside Curve**  
ACEJC30BI

|               |        |
|---------------|--------|
| Width         | 35"    |
| Depth         | 28"    |
| Height        | 28"    |
| Seat Height   | 14"    |
| COM YD - Back | 2      |
| COM YD - Seat | 2      |
| COM YD - Arms | -      |
| COM YD - Full | 4      |
| Cubic Feet    | 16     |
| Weight        | 61 lbs |



**Jr. Ace 30° Outside Curve**  
ACEJC30BO

|               |        |
|---------------|--------|
| Width         | 35"    |
| Depth         | 28"    |
| Height        | 28"    |
| Seat Height   | 14"    |
| COM YD - Back | 2      |
| COM YD - Seat | 2      |
| COM YD - Arms | -      |
| COM YD - Full | 3.5    |
| Cubic Feet    | 16     |
| Weight        | 61 lbs |



**Jr. Ace 45° Inside Curve**  
ACEJC45BI

|               |        |
|---------------|--------|
| Width         | 41"    |
| Depth         | 28"    |
| Height        | 28"    |
| Seat Height   | 14"    |
| COM YD - Back | 2.5    |
| COM YD - Seat | 2-     |
| COM YD - Arms | -      |
| COM YD - Full | 4.5    |
| Cubic Feet    | 19.5   |
| Weight        | 65 lbs |



**Jr. Ace 45° Outside Curve**  
ACEJC45BO

|               |        |
|---------------|--------|
| Width         | 38.5"  |
| Depth         | 28"    |
| Height        | 28"    |
| Seat Height   | 14"    |
| COM YD - Back | 2      |
| COM YD - Seat | 2      |
| COM YD - Arms | -      |
| COM YD - Full | 4      |
| Cubic Feet    | 18     |
| Weight        | 52 lbs |



**Jr. Ace 60° Inside Curve**  
ACEJC60BI

|               |         |
|---------------|---------|
| Width         | 67.5"   |
| Depth         | 28"     |
| Height        | 28"     |
| Seat Height   | 14"     |
| COM YD - Back | 4.5     |
| COM YD - Seat | 2.5     |
| COM YD - Arms | -       |
| COM YD - Full | 7       |
| Cubic Feet    | 35.5    |
| Weight        | 100 lbs |



**Jr. Ace 60° Outside Curve**  
ACEJC60BO

|               |        |
|---------------|--------|
| Width         | 67.5"  |
| Depth         | 28"    |
| Height        | 28"    |
| Seat Height   | 14"    |
| COM YD - Back | 4      |
| COM YD - Seat | 3      |
| COM YD - Arms | -      |
| COM YD - Full | 7      |
| Cubic Feet    | 35.5   |
| Weight        | 92 lbs |



**Jr. Ace 90° Inside Curve**  
ACEJC90BI

|               |         |
|---------------|---------|
| Width         | 74"     |
| Depth         | 28"     |
| Height        | 28"     |
| Seat Height   | 14"     |
| COM YD - Back | 5       |
| COM YD - Seat | 3.5     |
| COM YD - Arms | -       |
| COM YD - Full | 8       |
| Cubic Feet    | 42      |
| Weight        | 107 lbs |



**Jr. Ace 90° Outside Curve**  
ACEJC90BO

|               |        |
|---------------|--------|
| Width         | 68.5"  |
| Depth         | 28"    |
| Height        | 28"    |
| Seat Height   | 14"    |
| COM YD - Back | 4      |
| COM YD - Seat | 3.5    |
| COM YD - Arms | -      |
| COM YD - Full | 7      |
| Cubic Feet    | 38     |
| Weight        | 84 lbs |



**Jr. Ace 30° Bench**  
ACEJC30

|               |        |
|---------------|--------|
| Width         | 35"    |
| Depth         | 28"    |
| Height        | 14"    |
| Seat Height   | 14"    |
| COM YD - Back | -      |
| COM YD - Seat | 2.5    |
| COM YD - Arms | -      |
| COM YD - Full | 2.5    |
| Cubic Feet    | 8      |
| Weight        | 38 lbs |



**Jr. Ace 45° Bench**  
ACEJC45

|               |        |
|---------------|--------|
| Width         | 41.5"  |
| Depth         | 28"    |
| Height        | 14"    |
| Seat Height   | 14"    |
| COM YD - Back | -      |
| COM YD - Seat | 3      |
| COM YD - Arms | -      |
| COM YD - Full | 3      |
| Cubic Feet    | 10     |
| Weight        | 40 lbs |



**Jr. Ace 60° Bench**  
ACEJC60

|               |        |
|---------------|--------|
| Width         | 67.5"  |
| Depth         | 28"    |
| Height        | 14"    |
| Seat Height   | 14"    |
| COM YD - Back | -      |
| COM YD - Seat | 3      |
| COM YD - Arms | -      |
| COM YD - Full | 3      |
| Cubic Feet    | 18     |
| Weight        | 61 lbs |



**Jr. Ace 90° Bench**  
**ACEJC90**

|               |        |
|---------------|--------|
| Width         | 74"    |
| Depth         | 28"    |
| Height        | 14"    |
| Seat Height   | 14"    |
| COM YD - Back | -      |
| COM YD - Seat | 4      |
| COM YD - Arms | -      |
| COM YD - Full | 4      |
| Cubic Feet    | 21     |
| Weight        | 63 lbs |



**Jr. Ace 90° Corner Bench**  
**ACEJ90CB**

|               |        |
|---------------|--------|
| Width         | 31.25" |
| Depth         | 28"    |
| Height        | 14"    |
| Seat Height   | 14"    |
| COM YD - Back | -      |
| COM YD - Seat | 3      |
| COM YD - Arms | -      |
| COM YD - Full | 3      |
| Cubic Feet    | 12     |
| Weight        | 49 lbs |



**Jr. Ace Chaise**  
**ACEJC**

|               |         |
|---------------|---------|
| Width         | 23"     |
| Depth         | 70"     |
| Height        | 28"     |
| Seat Height   | 14"     |
| COM YD - Back | 3.5     |
| COM YD - Seat | 3       |
| COM YD - Arms | -       |
| COM YD - Full | 6       |
| Cubic Feet    | 26.5    |
| Weight        | 129 lbs |