



Carefully unclip and remove the climate controls.



Remove two Phillips screws from the bottom of the radio and remove.



Remove the four Torx screws from the sub-dash bracket and remove



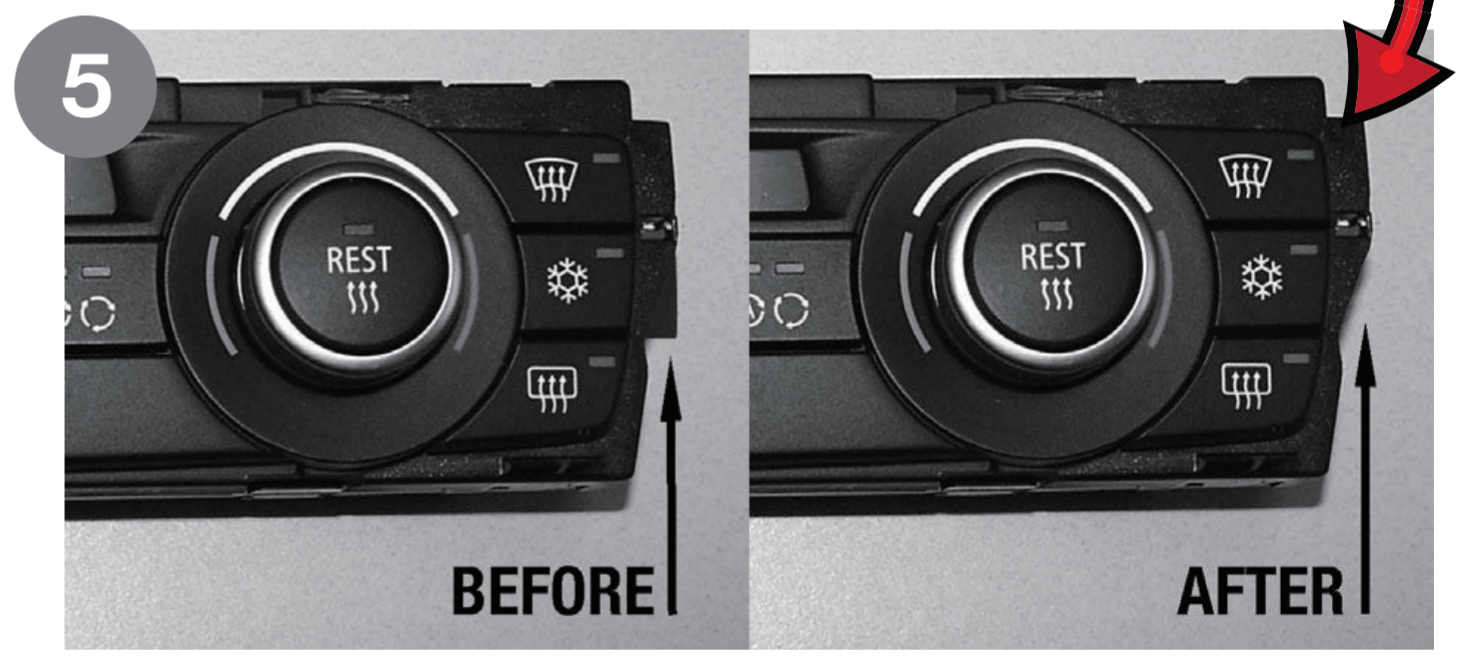
Remove the climate control and the center console switch unit from the climate control bezel.



BEFORE



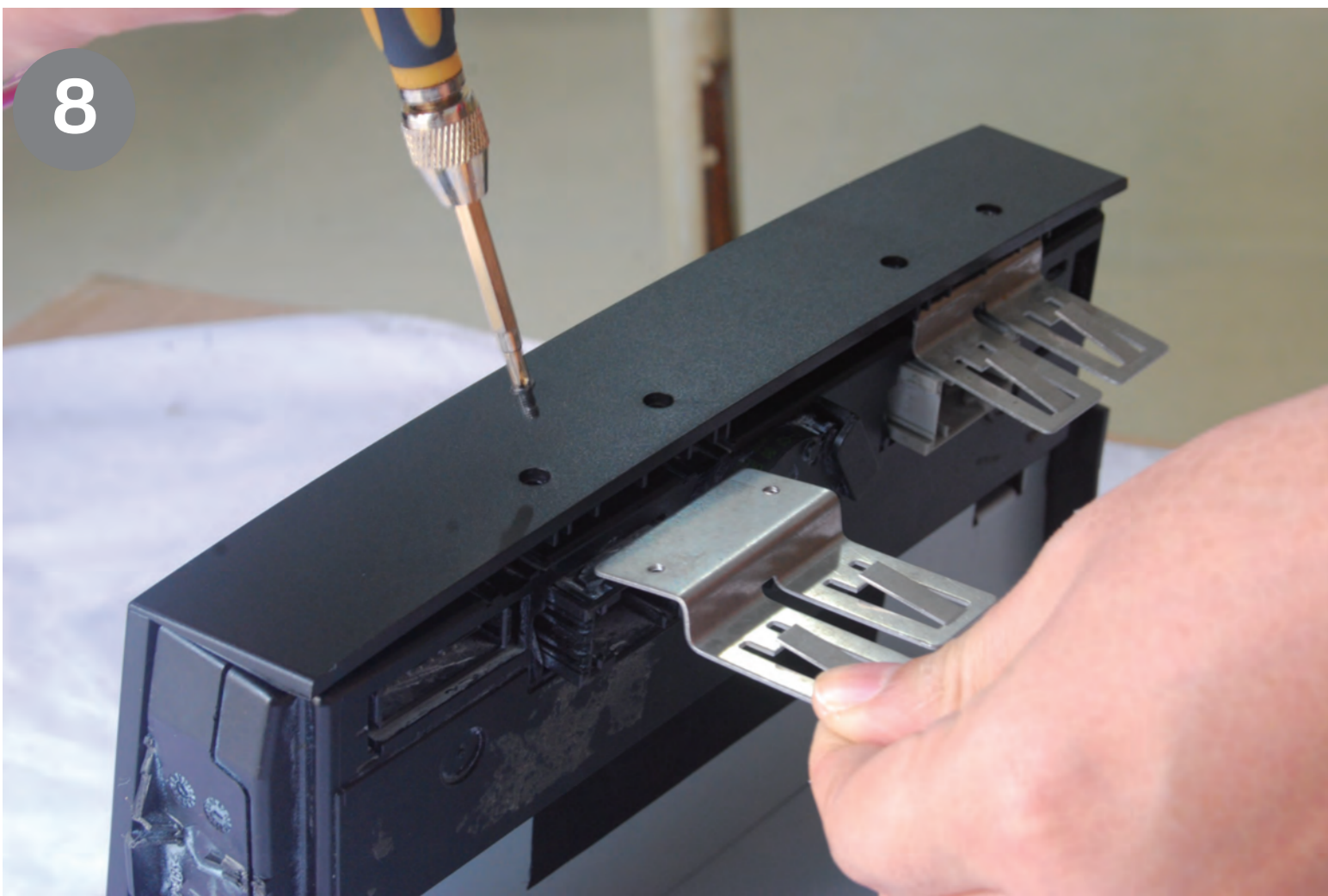
AFTER



Cut or file the edges of the climate controls as shown.



6



10

Connect Yellow cable(12V) to the Battery behind the glovebox

