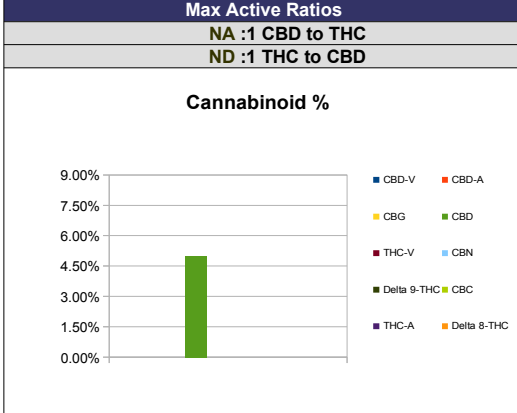
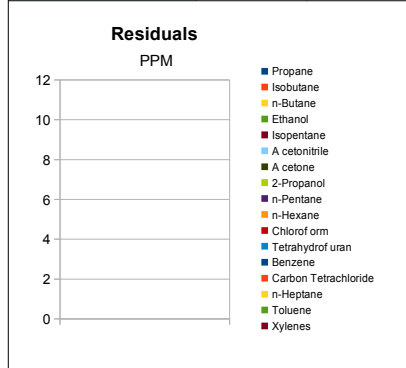


Sample Information		
Sample Identification	Sunset Tincture - 1500mg	
Laboratory Number	2018018151	
Batch Number	N/A	
Matrix	Tincture	
Analyzed Date	12/21/2018	
Extraction Date	12/21/2018	
Cannabinoid (HPLC)	%	mg/mL
Compound		
CBD-V	ND	ND
CBD-A	ND	ND
CBG	ND	ND
CBD	5.04%	50.45
THC-V	ND	ND
CBN	ND	ND
Delta 9-THC	ND	ND
CBC	ND	ND
THC-A	ND	ND
Delta 8-THC	ND	ND
Cannabinoids Total		
Max Active THC	ND	ND
Max Active CBD	5.04%	50.45
T. Active Cannabinoids	5.04%	50.45
Total Cannabinoids	5.04%	50.45



RS (GCMS-HS)	PPM	RL
Compound		
Propane	NT	5.0
Isobutane	NT	5.0
n-Butane	NT	5.0
Ethanol	NT	5.0
Isopentane	NT	5.0
Acetonitrile	NT	5.0
Acetone	NT	50.0
2-Propanol	NT	5.0
n-Pentane	NT	5.0
n-Hexane	NT	5.0
Chloroform	NT	5.0
Tetrahydrofuran	NT	5.0
Benzene	NT	5.0
Carbon Tetrachloride	NT	5.0
n-Heptane	NT	5.0
Toluene	NT	5.0
Xylenes	NT	10.0

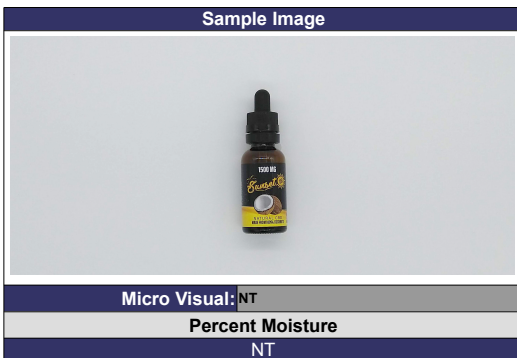
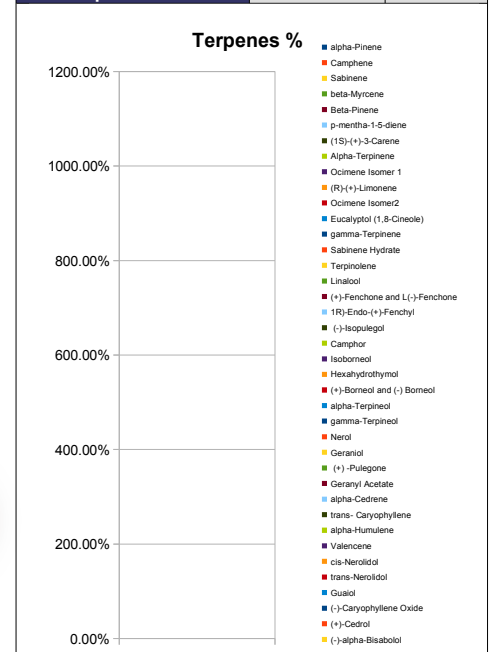


mL/bottle	30
mg THC/bottle	NA
mg CBD/bottle	1513.56
(mg) total cannabinoids/bottle	1513.56

Metals	PPM	RL
Compound		
Lead	NT	0.010
Arsenic	NT	0.010
Cadmium	NT	0.010
Mercury	NT	0.001

RL=Reporting Limit
NA=Not Applicable
NT=Not Tested
ND=Non Detected

Terpene (GC-MS)	%	mg/g
Compound		
alpha-Pinene	NT	NT
Camphene	NT	NT
Sabinene	NT	NT
beta-Myrcene	NT	NT
Beta-Pinene	NT	NT
p-mentha-1-5-diene	NT	NT
(1S)-(+)-3-Carene	NT	NT
Alpha-Terpinene	NT	NT
Ocimene Isomer 1	NT	NT
(R)-(+)-Limonene	NT	NT
Ocimene Isomer2	NT	NT
Eucalyptol (1,8-Cineole)	NT	NT
gamma-Terpinene	NT	NT
Sabinene Hydrate	NT	NT
Terpinolene	NT	NT
Linalool	NT	NT
(+)-Fenchone and L(-)-Fenchone	NT	NT
1R)-Endo-(+)-Fenchyl	NT	NT
(-)-Isopulegol	NT	NT
Camphor	NT	NT
Isoborneol	NT	NT
Hexahydrothymol	NT	NT
(+)-Borneol and (-) Borneol	NT	NT
alpha-Terpineol	NT	NT
gamma-Terpineol	NT	NT
Nerol	NT	NT
Geraniol	NT	NT
(+) -Pulegone	NT	NT
Geranyl Acetate	NT	NT
alpha-Cedrene	NT	NT
trans- Caryophyllene	NT	NT
alpha-Humulene	NT	NT
Valencene	NT	NT
cis-Nerolidol	NT	NT
trans-Nerolidol	NT	NT
Guaiol	NT	NT
(-)-Caryophyllene Oxide	NT	NT
(+)-Cedrol	NT	NT
(-)-alpha-Bisabolol	NT	NT
Total Terpenes	NT	NT



Chemist: JG

