



Finished Product Testing Report

Lot No.: 200616W24MS0
Product Name: WSM Muscle Salve
Manufacture Date: 06-16-2020
Expiration Date: 06-16-2022
Units Manufactured: 368
Lot Size: 368
Biomass COA ID: DSL061300-02
Distillate/Isolate COA ID: DSL08191900-02
Finished Product COA ID: 200616W24MS0

Finished Product Ingredients:

Grapeseed Oil	Yellow Beeswax	Organic Coconut Oil	Full Spectrum Hemp Extract Oil (CBD)
Peppermint Oil	Eucalyptus Leaf Oil	Rosemary Leaf Oil	Sweet Basil Oil
Spearmint Oil	Lavender Flower Oil	Ginger Root Oil	Ravensara Oil
Cinnamon Leaf Oil	Lemongrass Oil	Helichrysum Oil	Roman Chamomile Flower Oil

Quality Assurance Status: Pass
Approved By: B. Estes
Date Approved: 08-27-2020

Muscle Salve

Sample ID: 2008KCA0233.0607

Cultivar: N/A

Matrix: Topical

Type: Salve

Sample Size:

Received: 08/20/2020

Completed: 08/26/2020

Batch#: 200616W24MS0

Client

Korelife LLC

Lic.# P-0409

8054 Production Drive, Suite K

Florence, KY 41042



Summary

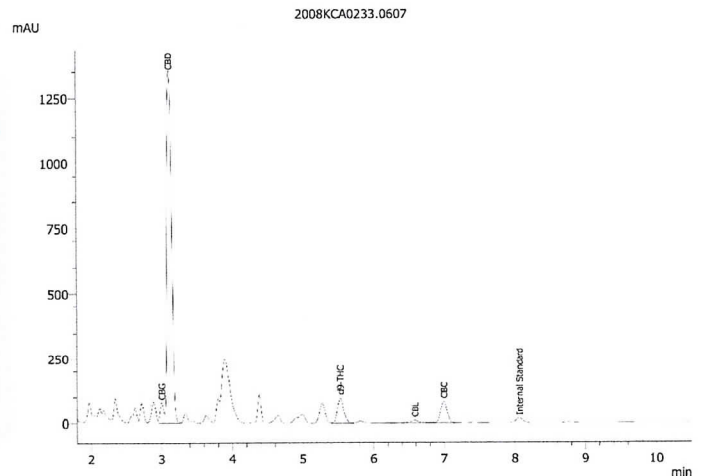
Test	Date Tested	Result
Cannabinoids	08/25/2020	Complete
Residual Solvents	08/24/2020	Passed
Microbials	08/24/2020	Passed
Mycotoxins	08/26/2020	Passed
Pesticides	08/26/2020	Passed
Heavy Metals	08/24/2020	Passed

Cannabinoids by HPLC-PDA

Complete

15.31877 mg/serving	498.88481 mg/serving	533.74511 mg/serving	NT <i>Not Tested</i>	Not Tested
Total THC	Total CBD	Total Cannabinoids	Moisture Content	Foreign Matter

Analyte	LOD mg/serving	LOQ mg/serving	Result mg/serving	Result mg/container
CBC	2.66731	7.97385	12.33700	32.07620
CBCA	5.08192	15.24577	ND	ND
CBCV	1.68462	5.05385	ND	ND
CBD	2.27423	6.79462	498.88481	1297.10050
CBDA	1.20731	3.65000	ND	ND
CBDV	1.71269	5.11000	ND	ND
CBDVA	0.58962	1.76885	ND	ND
CBG	1.60038	4.82923	7.20454	18.73180
CBGA	1.37577	4.12731	ND	ND
CBL	3.14462	9.40577	ND	ND
CBLA	3.48154	10.41654	ND	ND
CBN	1.57231	4.74500	ND	ND
CBNA	1.68462	5.08192	ND	ND
Δ8-THC	2.92000	8.76000	ND	ND
Δ9-THC	2.13385	6.37346	15.31877	39.82880
THCA	2.35846	7.04731	ND	ND
THCV	1.93731	5.78385	ND	ND
THCVA	1.74077	5.2231	ND	ND
Total THC			15.31877	39.82880
Total CBD			498.88481	1297.10050
Total			533.74511	1387.73730



Total THC = THCA * 0.877 + Δ9-THC

Total CBD = CBDA * 0.877 + CBD

LOD = Limit of Detection

LOQ = Limit of Quantitation

ND = None Detected

For plant material, the reported result is based on a sample weight with the applicable moisture content for that sample.



Wes Rogers

Wes Rogers
Principal Scientist
08/26/2020

This product or substance has been tested by KCA Laboratories using validated testing methodologies and a quality system. Values reported relate only to the product or substance tested. KCA Laboratories makes no claims as to the efficacy, safety or other risks associated with any detected or non-detected amounts of any substances reported herein. This Certificate of Analysis shall not be reproduced except in full, without the written approval of KCA Laboratories.

Muscle Salve

Sample ID: 2008KCA0233.0607

Cultivar: N/A

Matrix: Topical

Type: Salve

Sample Size:

Received: 08/20/2020

Completed: 08/26/2020

Batch#: 200616W24MS0

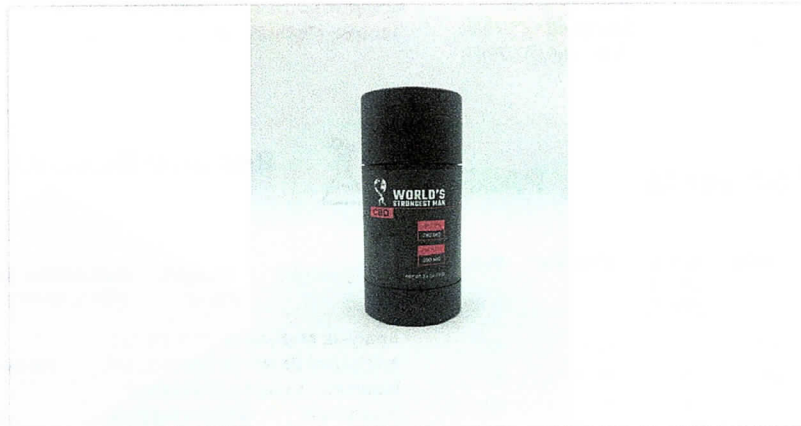
Client

Korelife LLC

Lic.# P-0409

8054 Production Drive, Suite K

Florence, KY 41042



Heavy Metals by ICP-MS

Passed

Analyte	LOD	LOQ	Mass
	µg/g	µg/g	µg/g
Arsenic	0.002	0.02	ND
Cadmium	0.001	0.02	ND
Lead	0.002	0.02	ND
Mercury	0.012	0.05	ND

Date Tested: 08/24/2020
LOD = Limit of Detection
LOQ = Limit of Quantitation
ND = None Detected




Wes Rogers
Principal Scientist
08/26/2020

This product or substance has been tested by KCA Laboratories using validated testing methodologies and a quality system. Values reported relate only to the product or substance tested. KCA Laboratories makes no claims as to the efficacy, safety or other risks associated with any detected or non-detected amounts of any substances reported herein. This Certificate of Analysis shall not be reproduced except in full, without the written approval of KCA Laboratories.



KCA Laboratories
232 North Plaza Drive
Nicholasville, KY 40356

(833) 522-5227
https://kcalabs.com
KDA Lic.# P_0058

Muscle Salve

Sample ID: 2008KCA0233.0607

Cultivar: N/A

Matrix: Topical

Type: Salve

Sample Size:

Received: 08/20/2020

Completed: 08/26/2020

Batch#: 200616W24MS0

Client

Korelife LLC

Lic.# P-0409

8054 Production Drive, Suite K

Florence, KY 41042

Pesticides by LCMS/MS & GCMS/MS

Passed

Analyte	LOD PPM	LOQ PPM	Mass PPM	Analyte	LOD PPM	LOQ PPM	Mass PPM
Abamectin	0.001	0.005	ND	Fludioxonil	0.001	0.005	ND
Acephate	0.001	0.005	ND	Imazalil	0.001	0.005	ND
Acetamiprid	0.001	0.005	ND	Imidacloprid	0.001	0.005	ND
Aldicarb	0.001	0.005	ND	Kresoxim Methyl	0.001	0.005	ND
Azoxystrobin	0.001	0.005	ND	Malathion	0.001	0.005	ND
Bifenazate	0.001	0.005	ND	Metalaxyl	0.001	0.005	ND
Boscalid	0.001	0.005	30.315	Methiocarb	0.001	0.005	ND
Carbaryl	0.001	0.005	ND	Methomyl	0.001	0.005	ND
Carbofuran	0.001	0.005	ND	Mevinphos	0.001	0.005	ND
Chlorantraniliprole	0.001	0.005	ND	Myclobutanil	0.001	0.005	ND
Chlordane	0.001	0.005	ND	Oxamyl	0.001	0.005	ND
Chlorfenapyr	0.001	0.005	ND	Paclbutrazol	0.001	0.005	ND
Clofentezine	0.001	0.005	ND	Parathion Methyl	0.001	0.005	ND
Coumaphos	0.001	0.005	66.849	Pentachloronitrobenzene	0.001	0.005	ND
Daminozide	0.001	0.005	ND	Phosmet	0.001	0.005	ND
Diazinon	0.001	0.005	ND	Piperonyl Butoxide	0.001	0.005	415.675
Dichlorvos	0.001	0.005	ND	Propiconazole	0.001	0.005	ND
Dimethoate	0.001	0.005	ND	Propoxur	0.001	0.005	ND
Dimethomorph	0.001	0.005	ND	Pyridaben	0.001	0.005	ND
Ethoprophos	0.001	0.005	ND	Spinosad	0.001	0.005	ND
Etofenprox	0.001	0.005	ND	Spirotetramat	0.001	0.005	ND
Fenhexamid	0.001	0.005	ND	Spiroxamine	0.001	0.005	ND
Fenoxycarb	0.001	0.005	ND	Tebuconazole	0.001	0.005	ND
Fenpyroximate	0.001	0.005	ND	Thiacloprid	0.001	0.005	ND
Fipronil	0.001	0.005	ND	Thiamethoxam	0.001	0.005	ND
Fonicamid	0.001	0.005	ND	Trifloxystrobin	0.001	0.005	9.797

Date Tested: 08/24/2020
LOD = Limit of Detection
LOQ = Limit of Quantitation
ND = None Detected



Wes Rogers

Wes Rogers
Principal Scientist
08/26/2020

This product or substance has been tested by KCA Laboratories using validated testing methodologies and a quality system. Values reported relate only to the product or substance tested. KCA Laboratories makes no claims as to the efficacy, safety or other risks associated with any detected or non-detected amounts of any substances reported herein. This Certificate of Analysis shall not be reproduced except in full, without the written approval of KCA Laboratories.



KCA Laboratories
232 North Plaza Drive
Nicholasville, KY 40356

(833) 522-5227
<https://kcalabs.com>
KDA Lic.# P_0058

Muscle Salve

Sample ID: 2008KCA0233.0607
Cultivar: N/A
Matrix: Topical
Type: Salve
Sample Size:

Received: 08/20/2020
Completed: 08/26/2020
Batch#: 200616W24MS0

Client
Korelife LLC
Lic.# P-0409
8054 Production Drive, Suite K
Florence, KY 41042

Microbials by qPCR

Passed

Analyte	Result
Aerobic Bacteria	CFU/g Not Detected in 1g
Shiga toxin-producing E. Coli	Not Detected in 1g
Enterobacteriaceae	Not Detected in 1g
Salmonella	Not Detected in 1g

Date Tested: 08/24/2020

TNTC = Too Numerous to Count; Unless otherwise stated all quality control samples performed within specifications established by the Laboratory.



Wes Rogers
Principal Scientist
08/26/2020

This product or substance has been tested by KCA Laboratories using validated testing methodologies and a quality system. Values reported relate only to the product or substance tested. KCA Laboratories makes no claims as to the efficacy, safety or other risks associated with any detected or non-detected amounts of any substances reported herein. This Certificate of Analysis shall not be reproduced except in full, without the written approval of KCA Laboratories.



KCA Laboratories
232 North Plaza Drive
Nicholasville, KY 40356

(833) 522-5227
<https://kcalabs.com>
KDA Lic.# P_0058

Muscle Salve

Sample ID: 2008KCA0233.0607

Cultivar: N/A

Matrix: Topical

Type: Salve

Sample Size:

Received: 08/20/2020

Completed: 08/26/2020

Batch#: 200616W24MS0

Client

Korelife LLC

Lic.# P-0409

8054 Production Drive, Suite K

Florence, KY 41042

Mycotoxins by LCMS/MS

Passed

Analyte	LOD	LOQ	Units
	PPB	PPB	PPB
B1	1	5	ND
B2	1	5	ND
G1	1	5	ND
G2	1	5	ND
Ochratoxin A	1	5	ND

Date Tested: 08/24/2020
LOD = Limit of Detection
LOQ = Limit of Quantitation
ND = None Detected



Wes Rogers
Principal Scientist
08/26/2020

This product or substance has been tested by KCA Laboratories using validated testing methodologies and a quality system. Values reported relate only to the product or substance tested. KCA Laboratories makes no claims as to the efficacy, safety or other risks associated with any detected or non-detected amounts of any substances reported herein. This Certificate of Analysis shall not be reproduced except in full, without the written approval of KCA Laboratories.



KCA Laboratories
232 North Plaza Drive
Nicholasville, KY 40356

(833) 522-5227
https://kcalabs.com
KDA Lic.# P_0058

Muscle Salve

Sample ID: 2008KCA0233.0607

Cultivar: N/A

Matrix: Topical

Type: Salve

Sample Size:

Received: 08/20/2020

Completed: 08/26/2020

Batch#: 200616W24MS0

Client

Korelife LLC

Lic.# P-0409

8054 Production Drive, Suite K

Florence, KY 41042

Residual Solvents by HS-GC/MS

Passed

Analyte	LOD PPM	LOQ PPM	Mass PPM	Analyte	LOD PPM	LOQ PPM	Mass PPM
Acetone	0.5	1	4.096	Heptane	0.5	1	ND
Acetonitrile	0.5	1	ND	Isobutane	0.5	1	ND
Benzene	0.5	1	ND	Isopropanol	0.5	1	1.143
Butane	0.5	1	2.722	Isopropyl-Acetate	0.5	1	ND
1-Butanol	0.5	1	ND	Methanol	0.5	1	ND
2-Butanol	0.5	1	ND	2-Methyl-Butane	0.5	1	ND
2-Butanone	0.5	1	ND	2-Methyl-Pentane	0.5	1	ND
Chloroform	0.5	1	ND	3-Methyl-Pentane	0.5	1	ND
Cumene	0.5	1	ND	Methylene-Chloride	0.5	1	ND
Cyclohexane	0.5	1	ND	N,N-Dimethyl-Acetamide	0.5	1	ND
1,2-Dichloro-Ethane	0.5	1	ND	N,N-Dimethyl-Formamide	0.5	1	ND
1,2-Dimethoxy-Ethane	0.5	1	ND	Neopentane	0.5	1	ND
2,2-Dimethyl-Butane	0.5	1	ND	1-Pentanol	0.5	1	1.040
2,3-Dimethyl-Butane	0.5	1	ND	Propane	0.5	1	32.576
Dimethyl sulfoxide	0.5	1	ND	1-Propanol	0.5	1	ND
1,4-Dioxane	0.5	1	ND	Pyridine	0.5	1	ND
Ethanol	0.5	1	2.356	Sulfolane	0.5	1	ND
2-Ethoxy-Ethanol	0.5	1	ND	Tetrahydrofuran	0.5	1	ND
Ethyl-Acetate	0.5	1	ND	Toluene	0.5	1	2.082
Ethyl-Benzene	0.5	1	ND	Trichloroethene	0.5	1	ND
Ethyl-Ether	0.5	1	ND	Xylenes	0.5	1	ND
Ethylene glycol	0.5	1	ND	n-Hexane	0.5	1	ND
Ethylene oxide	0.5	1	ND	n-Pentane	0.5	1	9.406

Date Tested: 08/24/2020
LOD = Limit of Detection
LOQ = Limit of Quantitation
ND = None Detected



Wes Rogers

Wes Rogers
Principal Scientist
08/26/2020

This product or substance has been tested by KCA Laboratories using validated testing methodologies and a quality system. Values reported relate only to the product or substance tested. KCA Laboratories makes no claims as to the efficacy, safety or other risks associated with any detected or non-detected amounts of any substances reported herein. This Certificate of Analysis shall not be reproduced except in full, without the written approval of KCA Laboratories.