



Finished Product Testing Report

Lot No.: 200615W87M30

Product Name: WSM Sport Tincture - 3000mg - Mint

Manufacture Date: 06-15-2020

Expiration Date: 06-15-2022

Units Manufactured: 750

Lot Size: 750

Biomass COA ID: DSL061300-02

Distillate/Isolate COA ID: DSL09061900-03

Finished Product COA ID: 200615W87M30

Finished Product Ingredients:

Full Spectrum Hemp Extract Oil

MCT Oil 60/40

Natural Mint Flavor WONF - MCT Oil Soluble

Quality Assurance Status: Pass

Approved By: B. Estes

Date Approved: 08-27-2020

3000 Sport Tincture - Mint

Sample ID: 2008KCA0233.0605

Cultivar: N/A

Matrix: Ingestible

Type: Tincture

Sample Size:

Received: 08/20/2020

Completed: 08/26/2020

Batch#: 200615W87M30

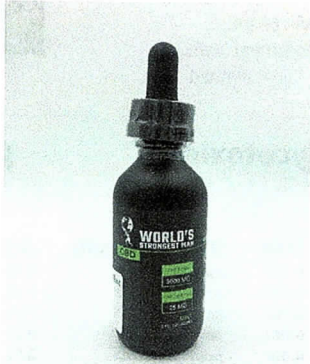
Client

Korelife LLC

Lic.# P-0409

8054 Production Drive, Suite K

Florence, KY 41042



Summary

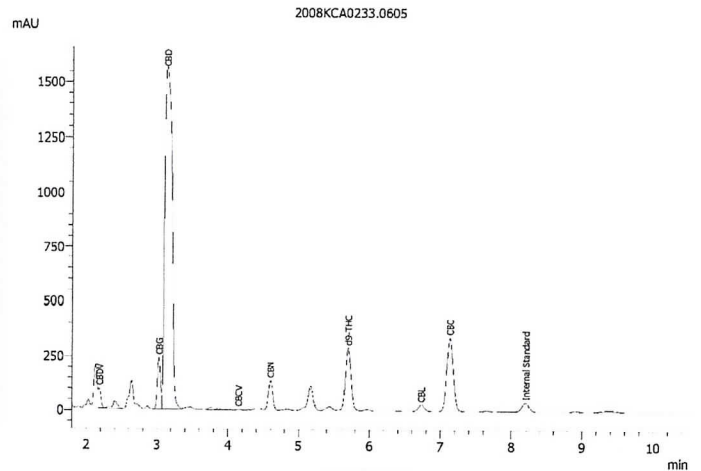
Test	Date Tested	Result
Cannabinoids	08/21/2020	Complete
Residual Solvents	08/24/2020	Passed
Microbials	08/24/2020	Passed
Mycotoxins	08/26/2020	Passed
Pesticides	08/26/2020	Passed
Heavy Metals	08/24/2020	Passed

Cannabinoids by HPLC-PDA

Complete

0.96050 mg/serving	26.89450 mg/serving	29.62300 mg/serving	NT Not Tested	Not Tested
Total THC	Total CBD	Total Cannabinoids	Moisture Content	Foreign Matter

Analyte	LOD	LOQ	Result	Result
	mg/serving	mg/serving	mg/serving	mg/container
CBC	0.00048	0.00142	0.95550	114.66000
CBCA	0.00091	0.00272	ND	ND
CBCV	0.00030	0.00090	0.00900	1.08000
CBD	0.00041	0.00121	26.89450	3227.34000
CBDA	0.00022	0.00065	ND	ND
CBDV	0.00031	0.00091	0.11100	13.32000
CBDVA	0.00011	0.00032	ND	ND
CBG	0.00029	0.00086	0.42850	51.42000
CBGA	0.00025	0.00074	ND	ND
CBL	0.00056	0.00168	0.08750	10.50000
CBLA	0.00062	0.00186	ND	ND
CBN	0.00028	0.00085	0.17650	21.18000
CBNA	0.00030	0.00091	ND	ND
Δ8-THC	0.00052	0.00156	ND	ND
Δ9-THC	0.00038	0.00114	0.96050	115.26000
THCA	0.00042	0.00126	ND	ND
THCV	0.00035	0.00103	ND	ND
THCVA	0.00031	0.00093	ND	ND
Total THC			0.96050	115.26000
Total CBD			26.89450	3227.34000
Total			29.62300	3554.76000



Total THC = THCA * 0.877 + Δ9-THC

Total CBD = CBDA * 0.877 + CBD

LOD = Limit of Detection

LOQ = Limit of Quantitation

ND = None Detected

For plant material, the reported result is based on a sample weight with the applicable moisture content for that sample.



Wes Rogers

Wes Rogers
Principal Scientist
08/26/2020

This product or substance has been tested by KCA Laboratories using validated testing methodologies and a quality system. Values reported relate only to the product or substance tested. KCA Laboratories makes no claims as to the efficacy, safety or other risks associated with any detected or non-detected amounts of any substances reported herein. This Certificate of Analysis shall not be reproduced except in full, without the written approval of KCA Laboratories.

3000 Sport Tincture - Mint

Sample ID: 2008KCA0233.0605

Cultivar: N/A

Matrix: Ingestible

Type: Tincture

Sample Size:

Received: 08/20/2020

Completed: 08/26/2020

Batch#: 200615W87M30

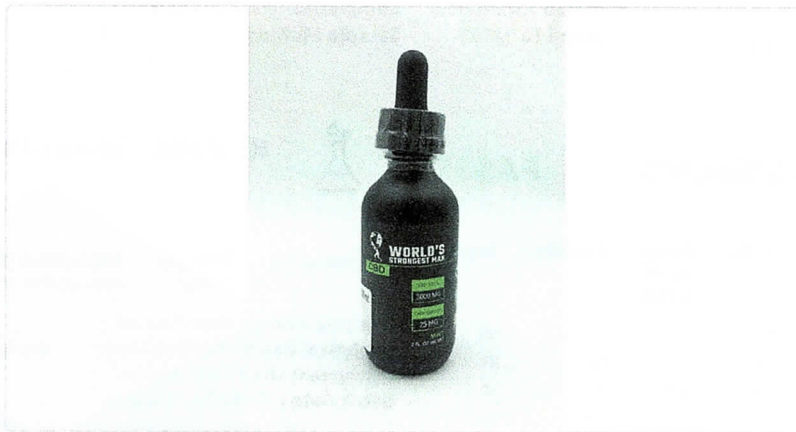
Client

Korelife LLC

Lic.# P-0409

8054 Production Drive, Suite K

Florence, KY 41042



Heavy Metals by ICP-MS

Passed

Analyte	LOD	LOQ	Mass
	µg/g	µg/g	µg/g
Arsenic	0.002	0.02	ND
Cadmium	0.001	0.02	ND
Lead	0.002	0.02	ND
Mercury	0.012	0.05	ND

Date Tested: 08/24/2020
LOD = Limit of Detection
LOQ = Limit of Quantitation
ND = None Detected




Wes Rogers
Principal Scientist
08/26/2020

This product or substance has been tested by KCA Laboratories using validated testing methodologies and a quality system. Values reported relate only to the product or substance tested. KCA Laboratories makes no claims as to the efficacy, safety or other risks associated with any detected or non-detected amounts of any substances reported herein. This Certificate of Analysis shall not be reproduced except in full, without the written approval of KCA Laboratories.



KCA Laboratories
232 North Plaza Drive
Nicholasville, KY 40356

(833) 522-5227
https://kcalabs.com
KDA Lic.# P_0058

3000 Sport Tincture - Mint

Sample ID: 2008KCA0233.0605

Cultivar: N/A

Matrix: Ingestible

Type: Tincture

Sample Size:

Received: 08/20/2020

Completed: 08/26/2020

Batch#: 200615W87M30

Client

Korelife LLC

Lic.# P-0409

8054 Production Drive, Suite K

Florence, KY 41042

Pesticides by LCMS/MS & GCMS/MS

Passed

Analyte	LOD	LOQ	Mass	Analyte	LOD	LOQ	Mass
	PPM	PPM	PPM		PPM	PPM	PPM
Abamectin	0.001	0.005	ND	Fludioxonil	0.001	0.005	ND
Acephate	0.001	0.005	ND	Hexythiazox	0.001	0.005	ND
Acetamiprid	0.001	0.005	ND	Imazalil	0.001	0.005	ND
Aldicarb	0.001	0.005	ND	Imidacloprid	0.001	0.005	ND
Azoxystrobin	0.001	0.005	ND	Kresoxim Methyl	0.001	0.005	ND
Bifenazate	0.001	0.005	ND	Malathion	0.001	0.005	ND
Boscalid	0.001	0.005	ND	Metalaxyl	0.001	0.005	ND
Carbaryl	0.001	0.005	ND	Methiocarb	0.001	0.005	ND
Carbofuran	0.001	0.005	ND	Methomyl	0.001	0.005	ND
Chlorantraniliprole	0.001	0.005	ND	Mevinphos	0.001	0.005	ND
Chlordane	0.001	0.005	ND	Myclobutanil	0.001	0.005	ND
Chlorfenapyr	0.001	0.005	ND	Oxamyl	0.001	0.005	ND
Chlorpyrifos	0.001	0.005	ND	Paclobutrazol	0.001	0.005	ND
Clofentezine	0.001	0.005	ND	Parathion Methyl	0.001	0.005	ND
Coumaphos	0.001	0.005	ND	Pentachloronitrobenzene	0.001	0.005	ND
Daminozide	0.001	0.005	ND	Phosmet	0.001	0.005	ND
Diazinon	0.001	0.005	ND	Piperonyl Butoxide	0.001	0.005	ND
Dichlorvos	0.001	0.005	ND	Propiconazole	0.001	0.005	ND
Dimethoate	0.001	0.005	ND	Propoxur	0.001	0.005	ND
Dimethomorph	0.001	0.005	ND	Pyridaben	0.001	0.005	ND
Ethoprofos	0.001	0.005	ND	Spinosad	0.001	0.005	ND
Etofenprox	0.001	0.005	ND	Spiromesifen	0.001	0.005	ND
Etoxazole	0.001	0.005	ND	Spirotetramat	0.001	0.005	ND
Fenhexamid	0.001	0.005	ND	Spiroxamine	0.001	0.005	ND
Fenoxycarb	0.001	0.005	ND	Tebuconazole	0.001	0.005	ND
Fenpyroximate	0.001	0.005	ND	Thiacloprid	0.001	0.005	ND
Fipronil	0.001	0.005	ND	Thiamethoxam	0.001	0.005	ND
Flonicamid	0.001	0.005	ND	Trifloxystrobin	0.001	0.005	ND

Date Tested: 08/24/2020
LOD = Limit of Detection
LOQ = Limit of Quantitation
ND = None Detected



Wes Rogers
Principal Scientist
08/26/2020

This product or substance has been tested by KCA Laboratories using validated testing methodologies and a quality system. Values reported relate only to the product or substance tested. KCA Laboratories makes no claims as to the efficacy, safety or other risks associated with any detected or non-detected amounts of any substances reported herein. This Certificate of Analysis shall not be reproduced except in full, without the written approval of KCA Laboratories.



KCA Laboratories
232 North Plaza Drive
Nicholasville, KY 40356

(833) 522-5227
<https://kcalabs.com>
KDA Lic.# P_0058

3000 Sport Tincture - Mint

Sample ID: 2008KCA0233.0605

Cultivar: N/A

Matrix: Ingestible

Type: Tincture

Sample Size:

Received: 08/20/2020

Completed: 08/26/2020

Batch#: 200615W87M30

Client

Korelife LLC

Lic.# P-0409

8054 Production Drive, Suite K

Florence, KY 41042

Microbials by qPCR

Passed

Analyte

Result

Aerobic Bacteria

CFU/g

Shiga toxin-producing E. Coli

Not Detected in 1g

Enterobacteriaceae

Not Detected in 1g

Salmonella

Not Detected in 1g

Not Detected in 1g

Date Tested: 08/24/2020

TNTC = Too Numerous to Count; Unless otherwise stated all quality control samples performed within specifications established by the Laboratory.



Wes Rogers
Principal Scientist
08/26/2020

This product or substance has been tested by KCA Laboratories using validated testing methodologies and a quality system. Values reported relate only to the product or substance tested. KCA Laboratories makes no claims as to the efficacy, safety or other risks associated with any detected or non-detected amounts of any substances reported herein. This Certificate of Analysis shall not be reproduced except in full, without the written approval of KCA Laboratories.



KCA Laboratories
232 North Plaza Drive
Nicholasville, KY 40356

(833) 522-5227
<https://kcalabs.com>
KDA Lic.# P_0058

3000 Sport Tincture - Mint

Sample ID: 2008KCA0233.0605

Cultivar: N/A

Matrix: Ingestible

Type: Tincture

Sample Size:

Received: 08/20/2020

Completed: 08/26/2020

Batch#: 200615W87M30

Client

Korelife LLC

Lic.# P-0409

8054 Production Drive, Suite K

Florence, KY 41042

Mycotoxins by LCMS/MS

Passed

Analyte	LOD PPB	LOQ PPB	Units PPB
B1	1	5	ND
B2	1	5	ND
G1	1	5	ND
G2	1	5	ND
Ochratoxin A	1	5	ND

Date Tested: 08/24/2020
LOD = Limit of Detection
LOQ = Limit of Quantitation
ND = None Detected



Wes Rogers
Principal Scientist
08/26/2020

This product or substance has been tested by KCA Laboratories using validated testing methodologies and a quality system. Values reported relate only to the product or substance tested. KCA Laboratories makes no claims as to the efficacy, safety or other risks associated with any detected or non-detected amounts of any substances reported herein. This Certificate of Analysis shall not be reproduced except in full, without the written approval of KCA Laboratories.



KCA Laboratories
232 North Plaza Drive
Nicholasville, KY 40356

(833) 522-5227
https://kcalabs.com
KDA Lic.# P_0058

3000 Sport Tincture - Mint

Sample ID: 2008KCA0233.0605

Cultivar: N/A

Matrix: Ingestible

Type: Tincture

Sample Size:

Received: 08/20/2020

Completed: 08/26/2020

Batch#: 200615W87M30

Client

Korelife LLC

Lic.# P-0409

8054 Production Drive, Suite K

Florence, KY 41042

Residual Solvents by HS-GC/MS

Passed

Analyte	LOD	LOQ	Mass	Analyte	LOD	LOQ	Mass
	PPM	PPM	PPM		PPM	PPM	PPM
Acetone	0.5	1	ND	Heptane	0.5	1	ND
Acetonitrile	0.5	1	ND	Isobutane	0.5	1	ND
Benzene	0.5	1	ND	Isopropanol	0.5	1	6.793
Butane	0.5	1	ND	Isopropyl-Acetate	0.5	1	ND
1-Butanol	0.5	1	ND	Methanol	0.5	1	ND
2-Butanol	0.5	1	ND	2-Methyl-Butane	0.5	1	ND
2-Butanone	0.5	1	ND	2-Methyl-Pentane	0.5	1	ND
Chloroform	0.5	1	ND	3-Methyl-Pentane	0.5	1	ND
Cumene	0.5	1	ND	Methylene-Chloride	0.5	1	ND
Cyclohexane	0.5	1	ND	N,N-Dimethyl-Acetamide	0.5	1	ND
1,2-Dichloro-Ethane	0.5	1	ND	N,N-Dimethyl-Formamide	0.5	1	ND
1,2-Dimethoxy-Ethane	0.5	1	ND	Neopentane	0.5	1	ND
2,2-Dimethyl-Butane	0.5	1	ND	1-Pentanol	0.5	1	ND
2,3-Dimethyl-Butane	0.5	1	ND	Propane	0.5	1	ND
Dimethyl sulfoxide	0.5	1	ND	1-Propanol	0.5	1	ND
1,4-Dioxane	0.5	1	ND	Pyridine	0.5	1	ND
Ethanol	0.5	1	4973.600	Sulfolane	0.5	1	ND
2-Ethoxy-Ethanol	0.5	1	ND	Tetrahydrofuran	0.5	1	ND
Ethyl-Acetate	0.5	1	4814.713	Toluene	0.5	1	ND
Ethyl-Benzene	0.5	1	ND	Trichloroethene	0.5	1	ND
Ethyl-Ether	0.5	1	ND	Xylenes	0.5	1	ND
Ethylene glycol	0.5	1	ND	n-Hexane	0.5	1	ND
Ethylene oxide	0.5	1	ND	n-Pentane	0.5	1	ND

Date Tested: 08/24/2020
LOD = Limit of Detection
LOQ = Limit of Quantitation
ND = None Detected



Wes Rogers

Wes Rogers
Principal Scientist
08/26/2020

This product or substance has been tested by KCA Laboratories using validated testing methodologies and a quality system. Values reported relate only to the product or substance tested. KCA Laboratories makes no claims as to the efficacy, safety or other risks associated with any detected or non-detected amounts of any substances reported herein. This Certificate of Analysis shall not be reproduced except in full, without the written approval of KCA Laboratories.