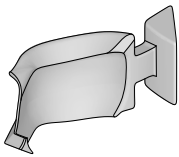


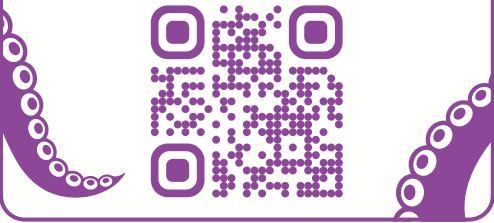
# Instructions for use

## OCTOwatrix™ Primary



Patent Pending

Demo videos, product information, ordering and more at [www.octodent.com](http://www.octodent.com).



### Device Description:

The OCTOwatrix™ Primary is an interproximal polymer-based wedge and matrix that is used for restorative dental work on primary teeth using amalgam, composite and glass ionomer restorative materials.

The OCTOwatrix™ Primary confines and controls restorative materials by providing a tight seal along the gingival, buccal and lingual surfaces. The OCTOwatrix™ Primary has a flexible matrix with anatomically accurate tooth contours which promotes smooth transitions from tooth structure to restorative materials thereby minimizing the required contouring and polishing.

The OCTOwatrix™ Primary includes a curved lead in tip for easy placement and a unique wedge profile which gently separates and protects the gingiva during restoration.

### Intended Use:

The OCTOwatrix™ Primary is intended to be used to separate posterior primary teeth with an interproximal wedge and aid with Class II restorations utilizing a thin, contoured matrix. The OCTOwatrix™ Primary is single use and is to be used by trained dental professionals only.

### Indications for Use:

The OCTOwatrix™ Primary is indicated for use during restorative dental procedures for posterior primary teeth.

### Warning/Precaution:

Use rubber dam or other airway protection system and secure with dental floss.

The OCTOwatrix™ Primary is not recommended for use where an adjacent tooth is not present.

See reverse for diagrams of use.

### Single Use.

**Do not autoclave. Do not cold sterilize.**



Do not reuse

Rx Only



Consult instructions for use



Non-sterile



Special operator awareness



Product and packaging are not made with natural rubber latex



Do not use if package is damaged

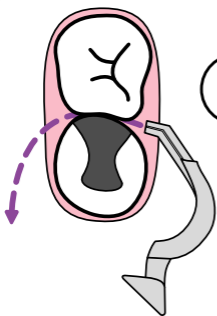
Manufactured for OCTOdent®, LLC.  
4021 W. Walnut Street | Rogers, AR 72756  
[www.octodent.com](http://www.octodent.com) | (870) 224-0966

AWK1000019-004 R0

Scan Me to view a Demo Video



1

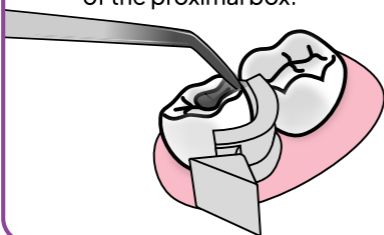


Prepare the tooth by completely breaking contact, then insert the matrix tip into the gingival embrasure.



**Helpful Tip:**

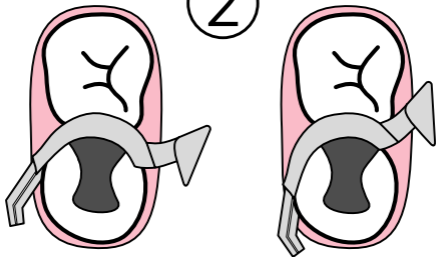
If the matrix binds during insertion, use cotton pliers or an explorer to guide the matrix past the cut edge of the proximal box.



Minimum rotation

2

Maximum rotation

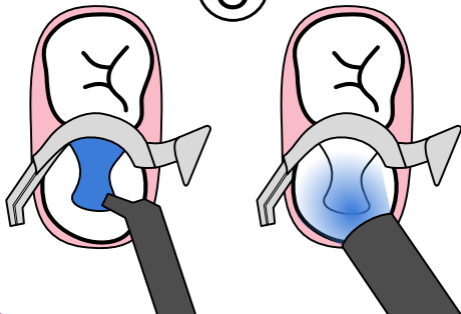


Rotate until binding.

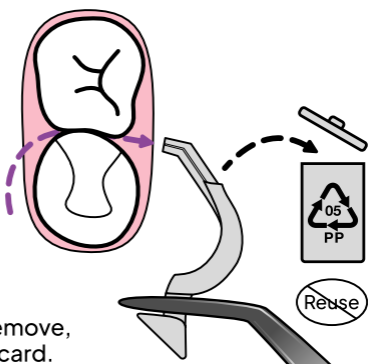
Fill

3

Cure



4



Pull to remove, then discard.