



ELITE OFFICE
FURNITURE

ELITE OFFICE FURNITURE

ADDRESS

Unit 9, 71-83 Asquith Street Silverwater
NSW 2128

EMAIL

hello@eliteofficefurniture.com.au

PHONE

1300 686 666

WEBSITE

www.eliteofficefurniture.com.au



ELITE OFFICE
FURNITURE

FABRIC RANGE

SPECIFICATION:

FABRIC/VINYL WIDTH

- 1.51m

COMPOSITION

JAZZ

- 100% Polypropylene fiber

LOOP

- 100 % Terylene

METRO

- 100% Polyester fibre

JAZZ MESH

- 100% Polyester

SPADE VINYL

- 5% Dyestuff
- 3-5% DOP
- 20-25% PVC powder
- 23-25% Plasticizer
- 20-25% Polyvinyl chloride
- 10-15% Calcium carbonate
- 10-15% Fabric

MERINO

- **ABRASION RESISTANCE**
5 Year warranty/ 50000
Martindale Cycles

• **Composition**

100% Australian wool

• **Environmental**

Rapidly renewable and
compostable

• **Width**

142cm

• **Weight**

600-620g/m

INSTRUCTION OF CARE:

- Clean with wet cloth only
- Keep out of direct sunlight
- Do not use any detergents to clean fabrics
- Do not use chemicals to clean fabrics
- Keep fabrics dry at all times
- Fabrics are not suitable for outside use

HOUSE FABRIC

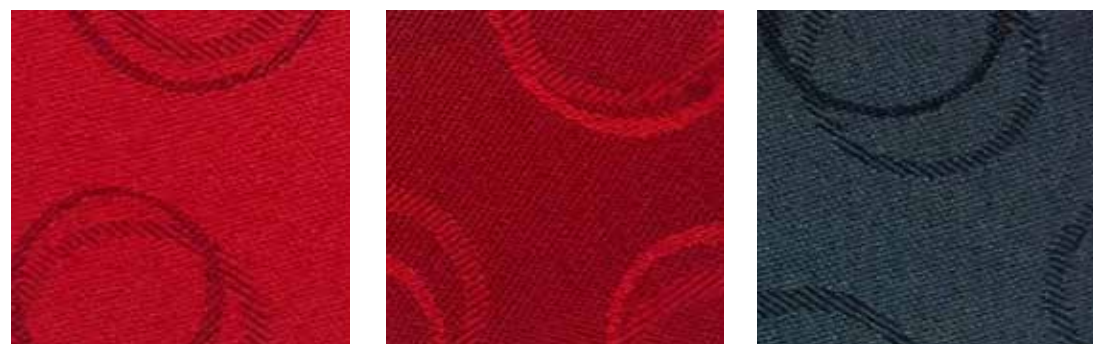
LOOP



AQUA

SEA

BLACK



HOT

RED

MIST



LIME

TREE

DUST

HOUSE FABRIC

METRO



BLACK

INK

HOUSE FABRIC

JAZZ



INDIGO

TURQUOISE

NAVY



MIDNIGHT

CHARCOAL

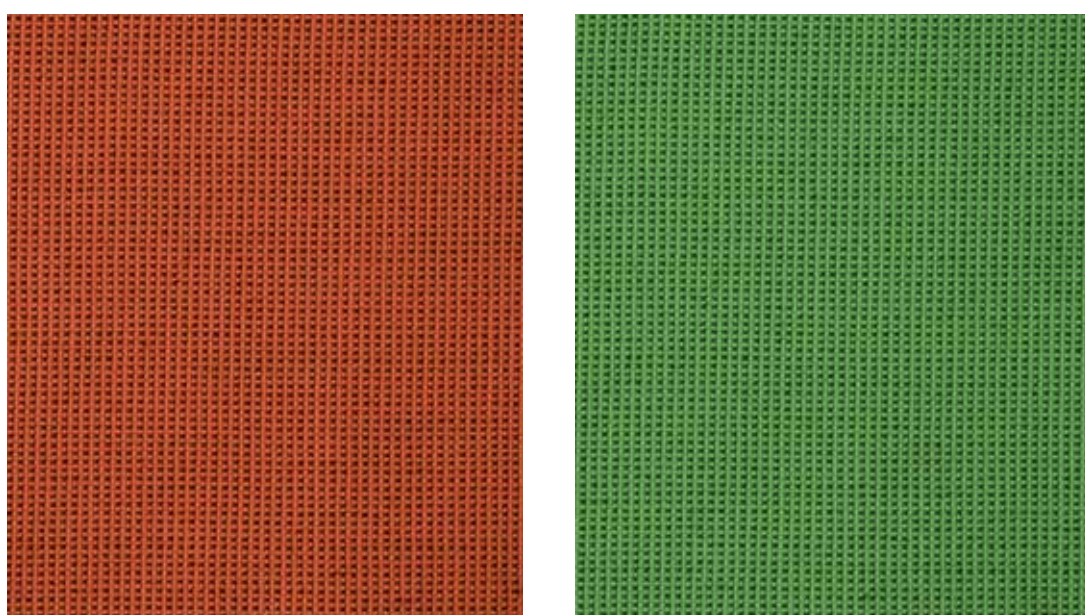
CRIMSON



BLACK

GOLD

SILVER



ORANGE

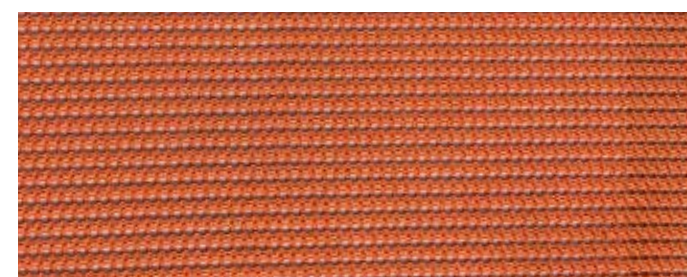
APPLE

HOUSE FABRIC

JAZZ MESH



MINT



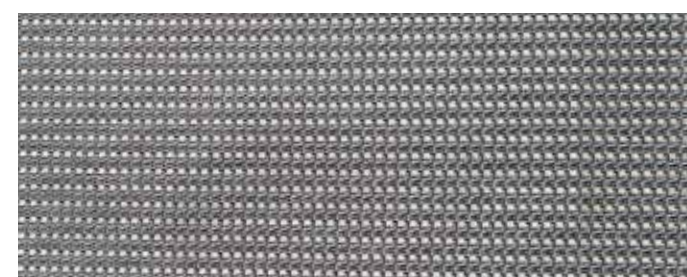
CITRUS



OCEAN



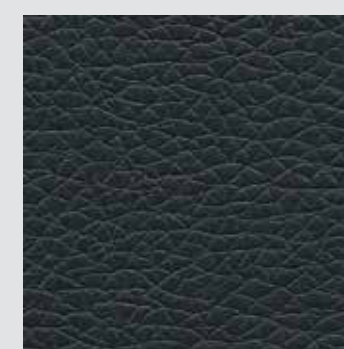
HOT



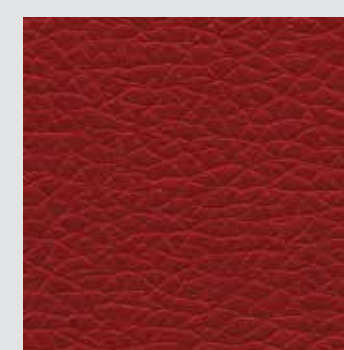
SLATE

CATEGORY 1

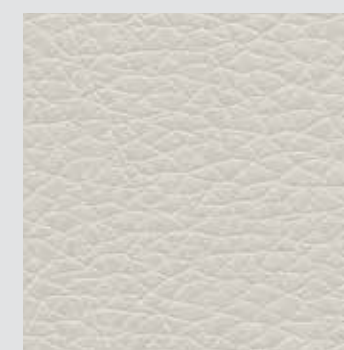
SPADE VINYL



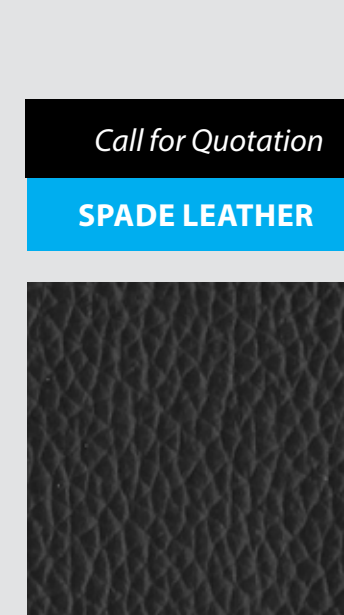
BLACK



RED



WHITE



BLACK

Call for Quotation

SPADE LEATHER

CATEGORY 3

LANA WOOL



STEEL

GREY

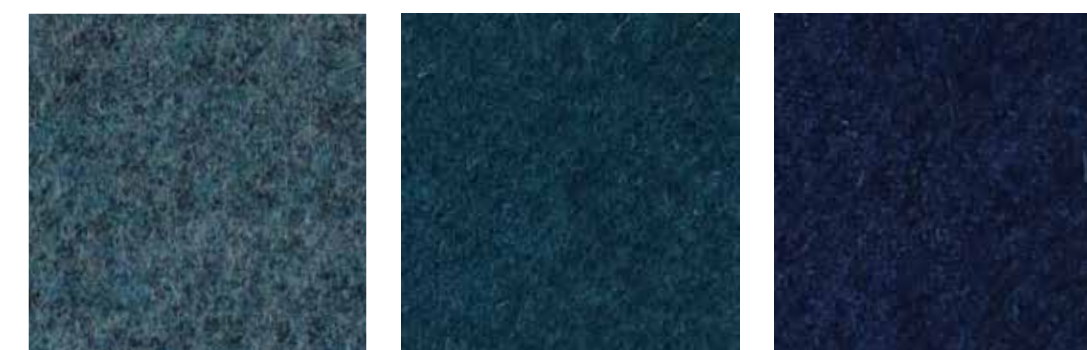
CARBON



SAND

WINE

FIRE



SKY

WAVE

SAPPHIRE



TEAL

FOREST