

WARWICK

Ashcroft

Recycled Upholstery Plain

WARWICK

Australia
T 1300 787 888
(toll free in Australia)
F +61 (0) 3 9415 7236
F +61 (0) 3 9416 1060
info@warwick.com.au
www.warwick.com.au

New Zealand
T +64 (0) 9 477 3080
F +64 (0) 9 479 6313
info@warwick.co.nz
www.warwick.co.nz

United Kingdom
T +44 (0) 1451 822 383
F +44 (0) 1451 822 369
info@warwick.co.uk
www.warwick.co.uk

| | |
|---------------------|---|
| RANGE NAME: | ASHCROFT |
| WIDTH: | 144CM |
| WEIGHT: | 295GSM |
| COMPOSITION: | 60% POLYESTER, 40% RECYCLED POLYESTER* |
| ABRASION: | 70,000 |
| USAGE: | HEAVY COMMERCIAL |
| FR TESTED: | YES |
| NB: | Presented stock may vary from these samples |

Features

- **Strength and Durability:** Tested for heavy commercial upholstery applications and extended performance and appearance characteristics.
- **Encore*:** Woven using no less than 40% recycled polyester, from both post-consumer and post-industrial recycled yarn sources.
- **Halo Easy Clean:** High-performance, easy clean fabrics that pass the toughest testing. All Warwick Halo fabrics are woven to precise specifications and tested to exacting standards for colourfastness, abrasion, inherent stain resistance and safety.
- **FR Rated:** Tested to comply with AS1530.3.
- **Oeko-Tex:** Tested for harmful substances and found to comply with all required criteria for environmentally friendly production facilities.
- **Guarantee:** 3 Years. Please see www.warwick.com.au for further information

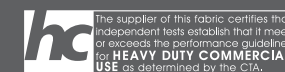
Australian and New Zealand Test Standards

Martindale rub Test: Heavy Duty Commercial Rating
(ISO 12947-2) Test Report Available on Request

Fire Hazard Properties: AS 1530 Part III Conducted
Test Report Available on Request

Warwick performance standards meet or exceed industry requirements. Please note that test results are intended as a guide and should be considered in conjunction with the fabric usage.

Warwick Fabrics have a commitment to our care of the environment. We request that if these samples are no longer required please contact your local Warwick Fabrics Showroom so that we may recycle them. Thank you.

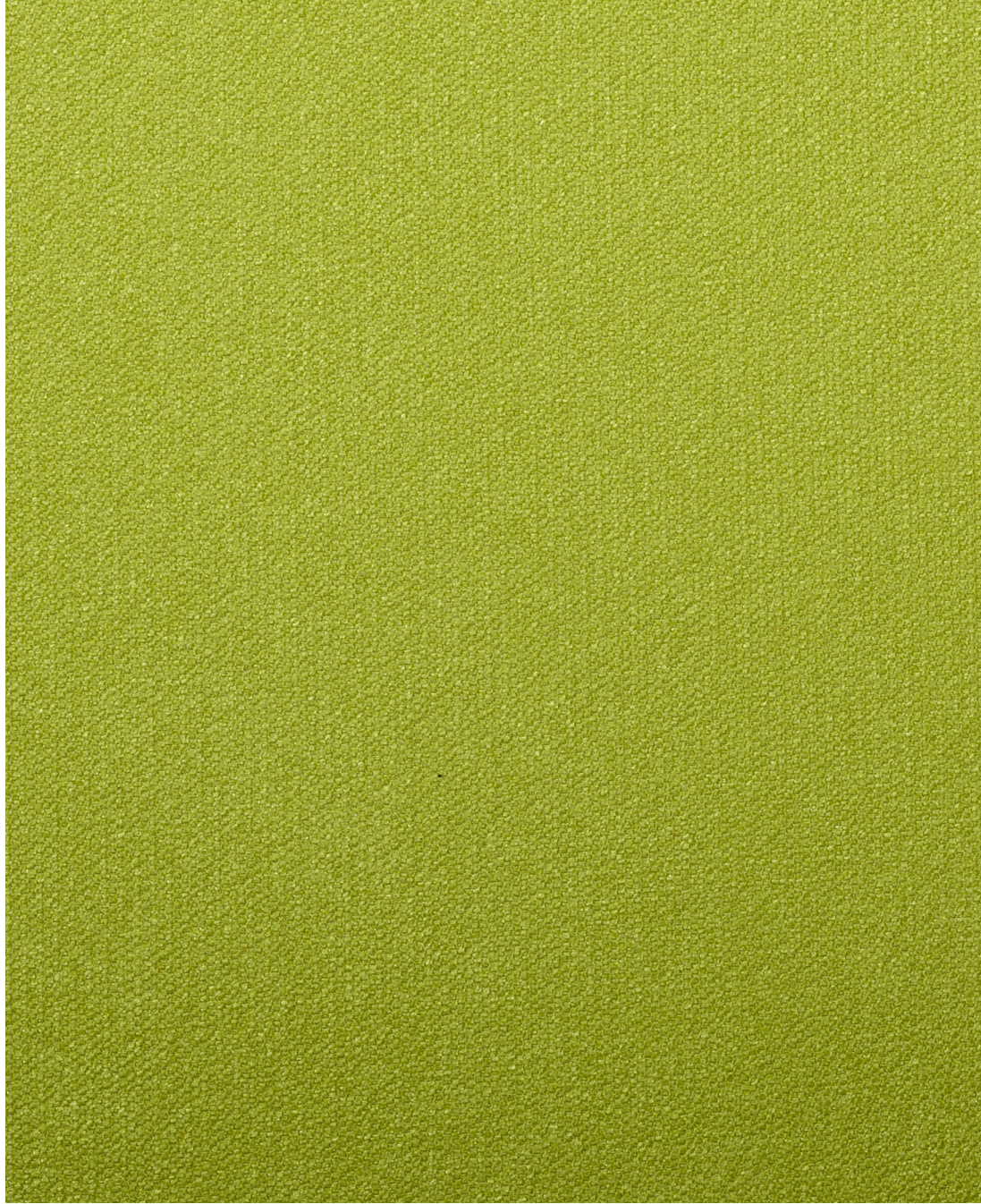


Adelaide Gold Coast Sydney South Africa
Brisbane Melbourne India UAE
Canberra Perth New Zealand United Kingdom

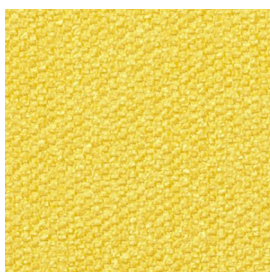


WARWICK

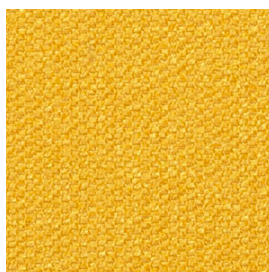
Ashcroft



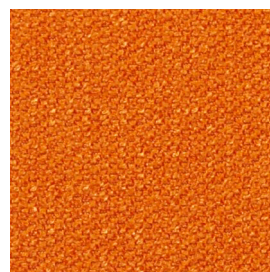
Grass



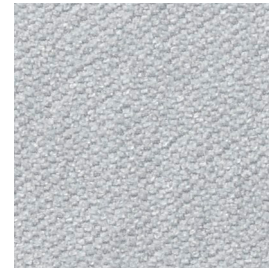
Lemon



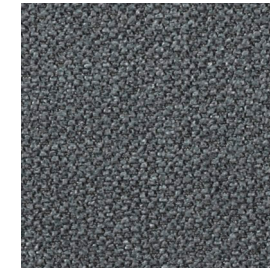
Canary



Orange



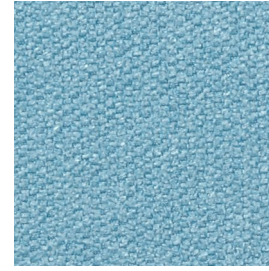
Silver



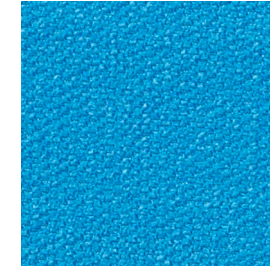
Gunmetal



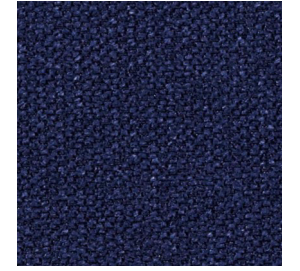
Onyx



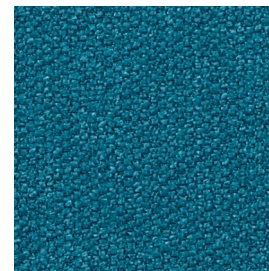
Cloud



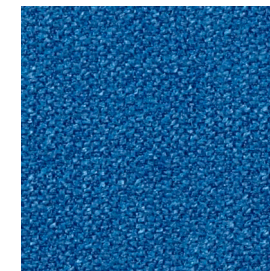
Turquoise



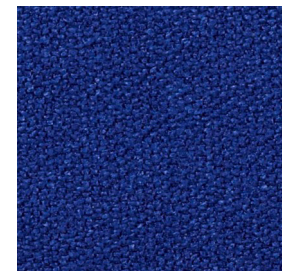
Navy



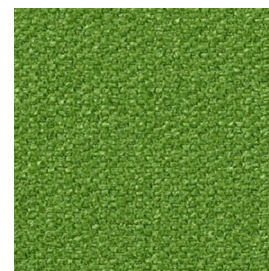
Teal



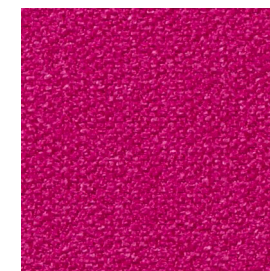
Pacific



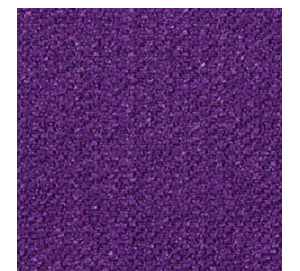
Ocean



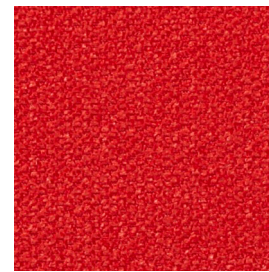
Kiwi



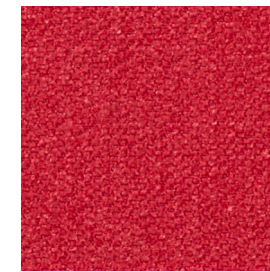
Pink



Purple



Scarlet



Red