

# ALPHA AD1

## MOBILE PORCELAIN WHITEBOARD



Create new insights, brainstorm issues, inspire students...  
wherever the meeting location is.

Mobility and the capturing of information is part of 'Agile Thinking'  
and problem solving for groups.

Open plan design can be effortlessly transformed into a work  
environment that encourages teamwork.

The new ALPHA AD1 Mobile Whiteboard offers an aesthetic,  
practical collaboration tool.

Featuring a double sided Vitreous Enamel (porcelain) writing surface  
that is conditionally warranted for 25 years and is scratch resistant.

# ALPHA AD1

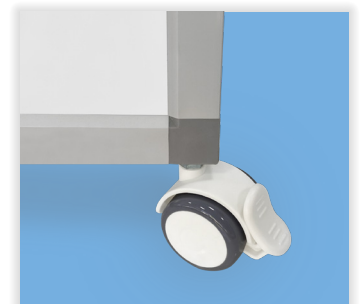
## MOBILE PORCELAIN WHITEBOARD

- A-shaped design is more stable compared to a traditional mobile whiteboard
- Large magnetic double-sided porcelain scratch resistant writing surface with a conditional 25 years warranty
- Satin silver aluminum frame finish
- Minimal assembly required, just screw on the wheels, then it's ready for use
- Fold flat and store when not in use
- Large internal storage tray to put all board accessories in one place
- 1800 x 900mm in size and weighs 28kg

Code	Description	Size (mm)
VAPB1890	ALPHA AD1 Porcelain Mobile Whiteboard	1800 x 900



Fold in flat and store feature



4 locking castor wheels  
50mmØ



Removeable storage shelf  
915mmL x 190mmW



### NSW Head Office

5 Liberty Rd,  
Huntingwood,  
NSW 2148

### QLD

Units 1-4,  
36 Deakin Street,  
Brendale QLD 4500

### VIC

U13, 69 Mark Anthony Dr,  
Dandenong South  
VIC 3175

### WA

47 Abbott Road,  
Perth Airport  
WA 6105

### SA

6 Leeds Street,  
Woodville North  
SA 5012

### NZ

49 Station Rd,  
Papatoetoe,  
Auckland NZ 2025