

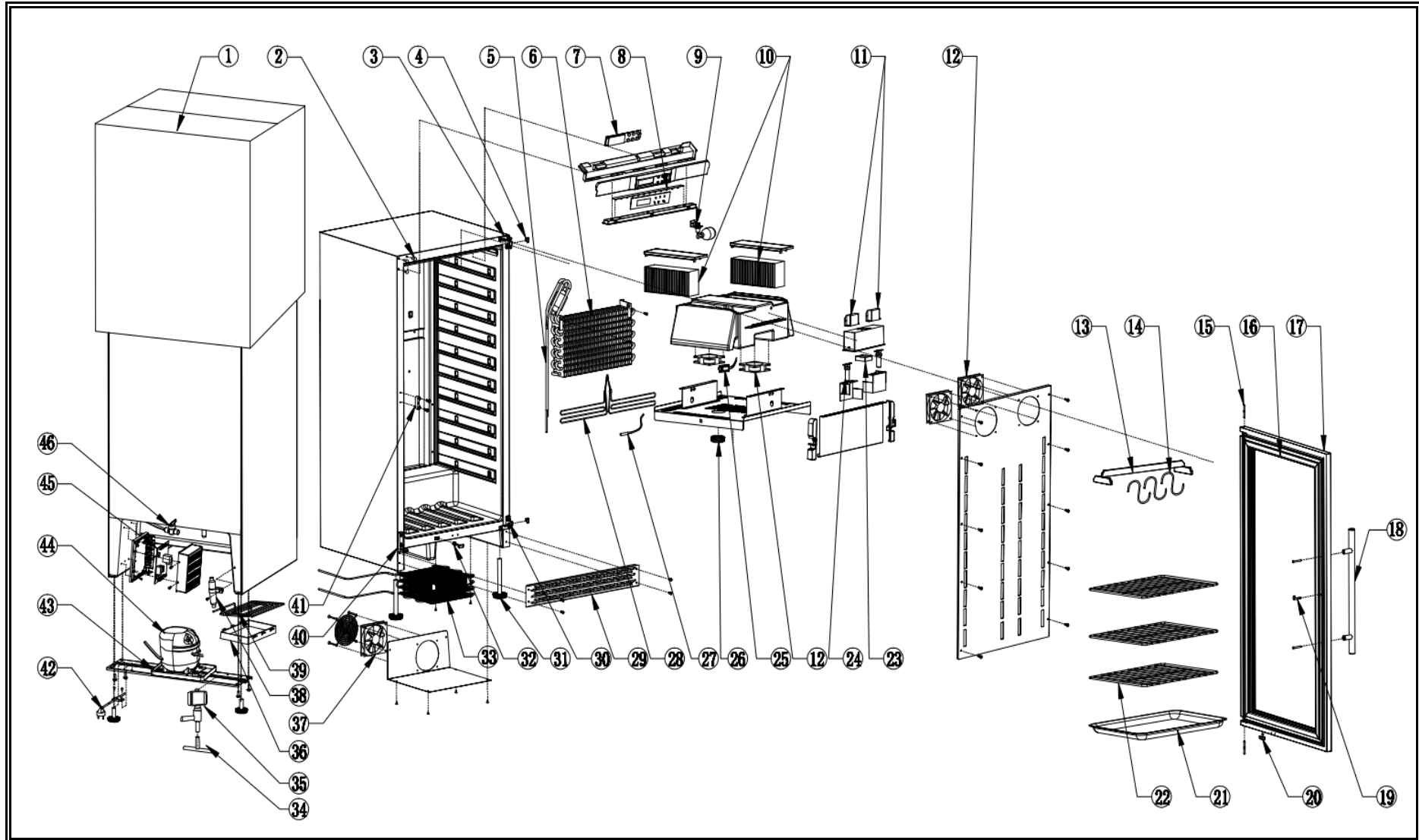


***7525.0105***

Onderdelen informatie  
Erzatzteil information  
Spare part information  
Information de pièces







POS:	Art.No.:	Omschrijving:	Aantal:
1		Carton	1
2	CS9338.5002	M5 trunk-nail	4
3	CS9338.4978	Hinge	1
4	CS9338.4946	Limited rubber	2
5		Suction tube	1
6	CS9338.5062	180 evaporator	1
7	CS9338.4998	White display board	1
8	CS9338.4908	White LED light (12pcs)	1
9	CS9338.5008	Float Assembly	1
10	CS9338.5010	Humidifier filter	2
11	CS9338.4984	12V Ballast	2
12	CS9338.4910	DC1225 fan motor	4
13		Pylons	1
14	CS9338.5014	Pegs	3
15	CS9338.4916	Door axis	2
16	CS9338.5012	SS35 door gasket	1
17		Door	1
18	CS9338.4988	Handle	1
19	CS9338.4990	Lock end	1
20	CS9338.4930	The square magnet	1
20a	CS9338.4930	Magnet mounting box	1
21	CS9338.5016	Salt Pans	1
22	CS7525.0114	Metal Shelf	3
23	CS9338.4982	SAD5015B12L fan motor	1
24	CS9338.4980	UV light	1
24a		UV light cover	1
25	CS9338.4986	Humidity sensor	1
26		Add Water covering cap subgroup	1
27	CS9338.4914	Sensor R=2.1K	1
28	CS9338.5078	Heater	1
29		VI88 kick plate	1
30	CS9338.4992	Right Hinge	1
31	CS9338.4974	M10 cabinet leg	4
32		Magnetic switch box	1
32a	CS9338.4918	Magnetic switch PCB board	1
33		Condenser	1
34		T-type 3-way pipe	2
35	CS9338.5004	Solenoid valve	1
36		Water container	1
37	CS9338.4910	DC1225 fan motor	1
38		Dryer filter	1
39		connecting pipe	1
40		Drop-proof device	1

POS:	Art.No.:	Omschrijving:	Aantal:
41		Lock mount	1
42	CS9392.0830	Electrical power cord	1
43		Water container	1
44	CS9390.2930	FMXA4C compressor	1
45	CS9338.4996	PCB board	1
46		2 minute check valve	1