

Description

Being in business for over 30 years, AXYZ machines have used components from many different vendors and suppliers. The photos and notes provided by the customer as outlined in this document are required to accurately quote the correct components for the machine upgrade.

Tools and Supplies

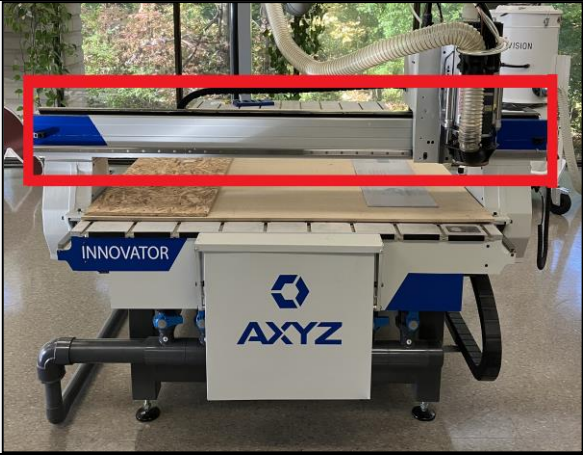
- T-handles/Metric Allen Keys
- Camera/Phone

Health and Safety Warnings

- Disconnect the power while taking the pictures in the Electrical Box
- Be mindful of any sharp tools in the spindles/knives

Customer Instructions

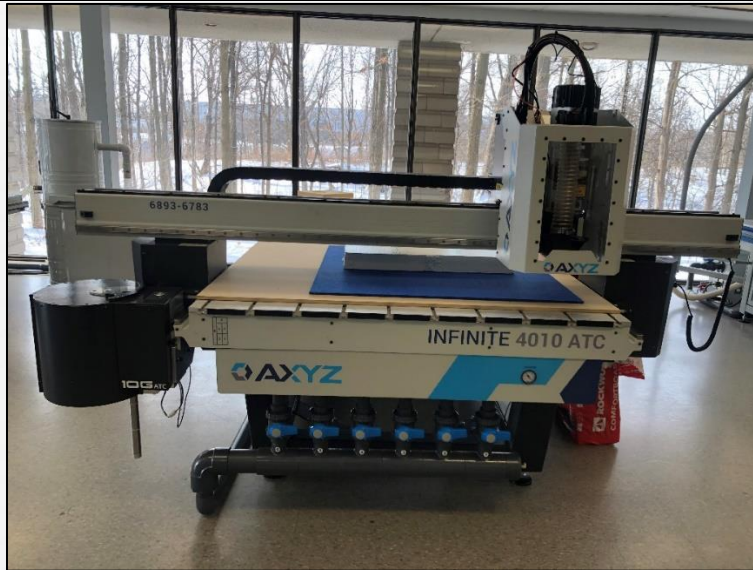
Please include the following notes in the email reply:

Notes:	
Machine Voltage and Phase	
Measured length of the gantry tube. Please measure the gantry tube from end to end. (See picture)	
Are there any known issues with the machine?	

On the below pages we give examples of the photos that are required for the machine. All the photos are **required** so please follow the instructions as closely as possible. Having accurate photos the first time ensures we can move on to the next step in the quote process. There will be occasions when we reach out for additional photos if we see something that we need some more detail about. Of course, feel free to add any additional photos of peripheral systems or anything that you think may be helpful for us to see. If in doubt, snap a quick picture.

1. Front View of the Table

- Please take a photo with the entire front of the table in view
- This photo should show the machine from the floor to the top of the carriage, and from both ends of the gantry tube



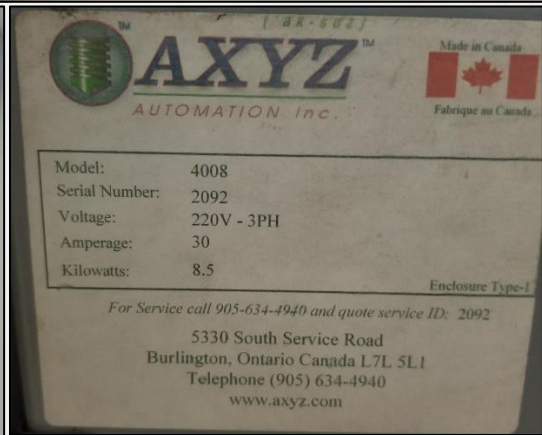
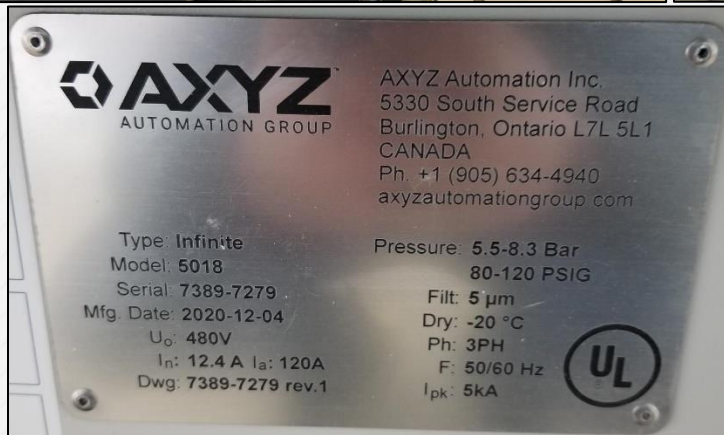
2. Side View of Table

- Please take a picture from each side of the table
- These photos should show from the floor to the top of the carriage, and the full length of the machine (the photo may need to be taken from an angle if you can not fit the entire table in frame directly from the side)



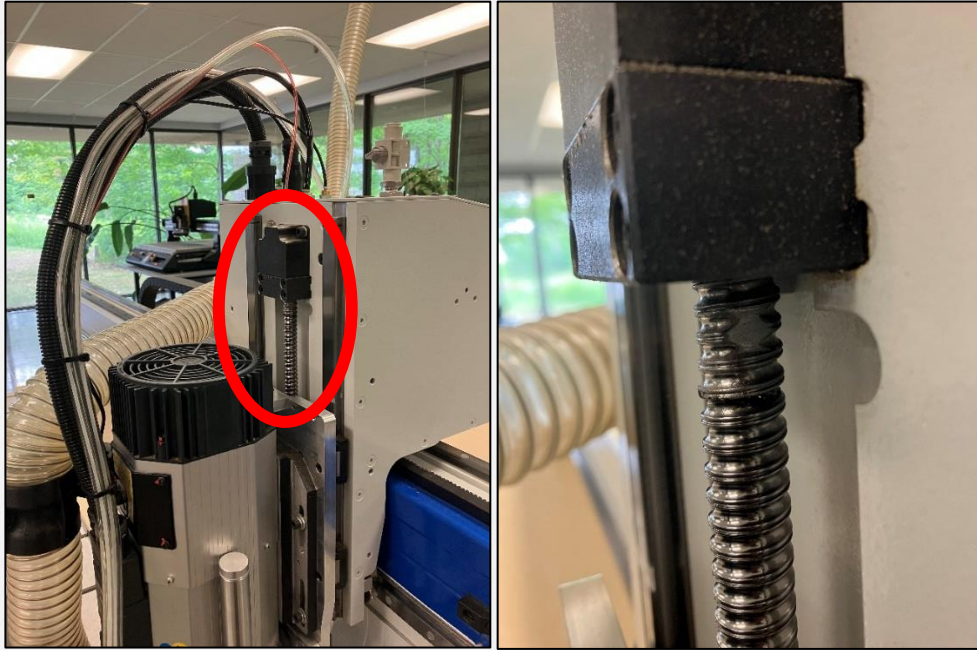
3. Serial Number (different styles of serial numbers shown below)

- 8-digit number typically found on the front of the gantry tube or on the electrical box
- While not common, it is sometimes on the frame of the machine in large vinyl letters
- For older tables this may be a 4-digit number



4. LEAD/BALLSCREW (only the second photo is required)

- Please jog the head down and take a picture of the leadscrew/ball screw
- If the machine is not powered on it is also sometimes possible to take a photo from below
- The photo should clearly show the thread of the lead/ball screw



5. Gantry Legs (The first photo is for reference only)

- Please take a photo of the entire inside of the leg. This will require removing the leg cover
 - After removing the last screw be careful that the cover does not drop.
- Please also take a close-up photo of the top pulley



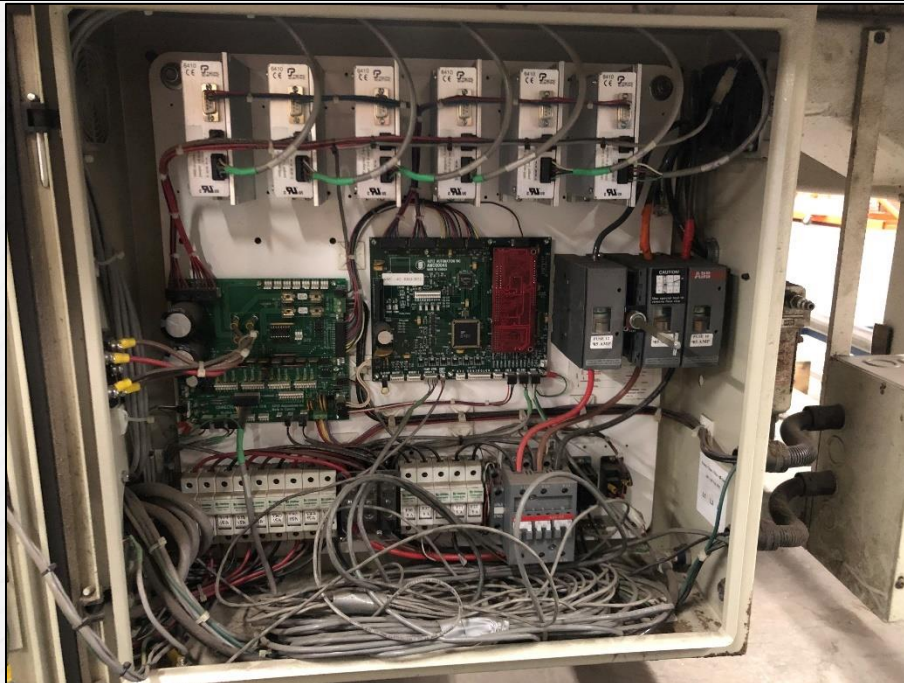
6. Electrical Box (External)

- Please take a photo of the electrical box on the machine
- Please ensure the entire rear of the machine is visible in the photo. If that is not possible, please take multiple photos showing both sides of the electrical box



7. Electrical Box (Internal)

- Please open the electrical box and take a photo showing the entire panel in a single photo



8. Racks/Rails (examples of racks and rails show below)

- The photos of the rack should show if the rack is a straight rack or a helical rack (the teeth of a helical rack will be angled)
- The photos of the rails should show the **profile** of the rail. We have used different rail manufacturers over the years which require matching bearings
- Note that there are **two (2)** locations for racks on the machine. Please include a photo for **each** one.
 - X-rack - Found under the side extrusions on the base of the machine (under where the gantry legs sit on the rails)
 - Y-rack - Found along the length of the gantry tube
- Note that there are **three (3)** locations for rails on the machine. Please include a photo for **each** one.
 - X-rail – Found on the top of the side extrusion on the base of the machine (where the gantry legs sit)
 - Y-Rail – Found along the length of the gantry tube
 - Z-Rail – Found behind the spindle/knife on the carriage of the machine

