

# iClean™ mini

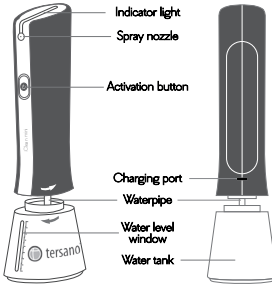
**IMPORTANT SAFETY INSTRUCTIONS.  
READ THESE INSTRUCTIONS COMPLETELY.  
SAVE THESE INSTRUCTIONS FOR FUTURE REFERENCE.**

## PREPARATION

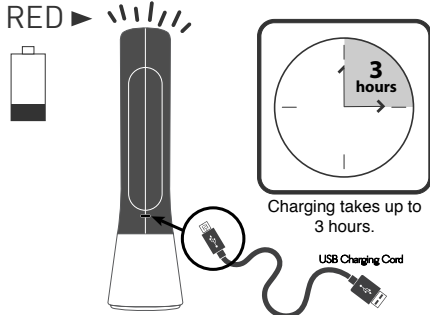
**IMPORTANT:**  
Familiarize yourself with your new iClean mini.

Your iClean mini kit includes:

- iClean mini device
- USB charging cord
- Instruction sheet
- Gift box



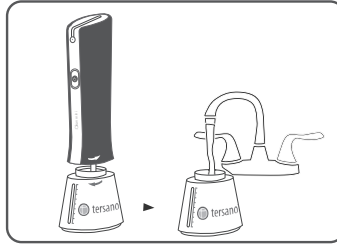
## CHARGE



- The charging port is located on the back of the iClean mini.
- Connect the USB charging cord to the device.
- Plug the other end of the charging cord into a USB outlet or through a USB power adapter (not included) then into a standard electrical outlet.
- A **slowly flashing red light** on top indicates charging is taking place.
- Charging is complete when a **blue light** on top flashes.
- Unplug the charging cord from the outlet and disconnect the charger from the iClean.

**Note:** If iClean mini does not operate when activation button is pressed, the iClean mini needs to be recharged. iClean mini will not operate during the charging process.

## FILL



- Turn reservoir on base counter-clockwise and remove from iClean mini.
- Fill reservoir with cold tap water **ONLY**.
- Reattach reservoir to iClean mini and turn clockwise to fasten tightly.
- Fill with tap water **ONLY**.
- Do **NOT** add chemicals or soap.
- Do not submerge under water.

## USE

### INDICATORS

- When activation button is pressed, a **continuous blue light** on top indicates iClean mini is producing aqueous ozone.
- A **continuous red light** on top indicates reservoir is empty.

### CLEAN

- Press activation button on front of iClean mini to wet surface to be cleaned.
- Wipe surface dry with a cotton, microfiber, or paper textile.

**Note:** no need to wipe completely dry – residual water will evaporate without streaking.

## SANITIZE

- Kill germs only on hard, non-porous surfaces.
- Clean surface with the iClean mini.
- Press button and continuously spray surface with aqueous ozone.
- Wipe surface dry with any clean cloth.

## CARE

### RECHARGING

- It is not necessary to drain battery completely before recharging.
- **ONLY** use charger supplied with iClean mini kit.

### MAINTENANCE

To maintain consistent performance, follow these care instructions.

- Empty reservoir at the end of each day.
- With empty reservoir attached, press activation button for 5 seconds to clear excess water.
- When iClean mini has not been used for more than 5 days, fill reservoir completely, press activation button, and spray until reservoir is empty. Then refill reservoir and iClean mini is ready for use again.
- Use only attachments and replacement parts sold or recommended by manufacturer.
- iClean mini is **NOT** dishwasher safe.
- iClean mini is not a toy. Supervision required when children present.

### STORAGE

- Empty water from reservoir.
- Store upright at room temperature.
- Do not dispose of device or battery in household trash. Dispose of properly. Contact Tersano with questions.
- Store upright and indoors above 40°.

EPA Est. No.: 93508-CHN-1

Product may vary slightly from illustrations enclosed in this use and care guide.

## PRODUCT DESCRIPTION

<b>iClean mini</b>	Aqueous ozone	<b>Colour</b>	Dark blue
<b>Model</b>	LQFC200	<b>Water Quality</b>	Clean tap water
<b>Battery</b>	7.4V Li-ion	<b>Water Temperature</b>	4-40°C
<b>USB Charging Cord</b>	Connect to USB outlet/ adapter 5VDC, ≥1A	<b>Net Weight</b>	300g
<b>Dimension</b>	85 x 63 x 230mm	<b>Tank Capacity</b>	150ml
<b>Charging Time</b>	Up to 3 hours	<b>O<sub>3</sub> Water Concentration</b>	up to 1.7 ppm

## CAUTION

- For first time usage, charge for 4 hours and then spray at least one tank of water to activate the unit in order to achieve the normal concentration value of O<sub>3</sub> water.
- Do not spray directly into the eyes.
- Avoid flushing the unit with water.

*US and International Patents and Patent Pending. lotus® and Tersano™ are trademarks of Tersano Inc.*



www.tersano.com

## QUESTIONS OR CONCERNS

Contact Tersano at 800-727-8835 or +1 519 737 7588 with questions or concerns about your iClean mini.

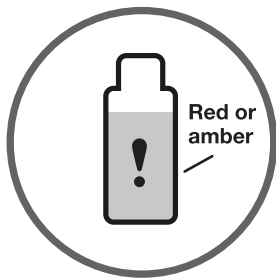


IMPORTANT SAFETY INSTRUCTIONS.  
READ THESE INSTRUCTIONS COMPLETELY.  
SAVE THESE INSTRUCTIONS FOR FUTURE REFERENCE.

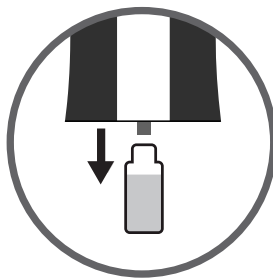
## REPLACEMENT SAO™ CARTRIDGES

For optimum cleaning and sanitizing performance, change cartridge seasonally (no less than every three months). One cartridge lasts over 1,000 sprays.

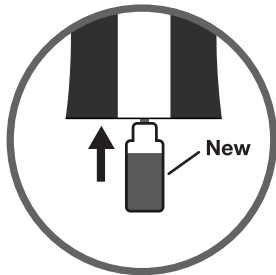
### CHANGING YOUR iCLEAN™ MINI CARTRIDGE



1. When cartridge window changes orange to red or purple to amber, time to replace.



2. Open reservoir, pull down cartridge to disengage.



3. Push new cartridge up and onto notch.



4. Replace reservoir.



Replace cartridge every 3 months (seasonally).

*Product may vary slightly from illustrations enclosed in this use and care guide.*



[www.tersano.com](http://www.tersano.com)

## QUESTIONS OR CONCERNS

Contact Tersano at 800-727-8835 or +1 519 737 7588 with questions or concerns about your iClean mini.