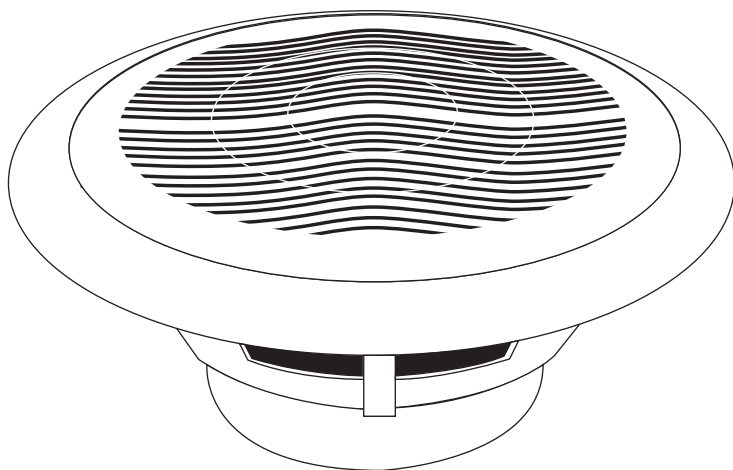


Herdio®

6.5" WATERPROOF MARINE SPEAKERS



HMS-6005



Owner's Manual

www.Herdiotech.com

English

FCC Requirement

Changes or modifications not expressly approved by the party responsible for compliance could void the user's authority to operate the equipment. This device complies with Part 15 of the FCC Rules. Operation is subject to the following two conditions:

(1) this device may not cause harmful interference, and
(2) this device must accept any interference received, including interference that may cause undesired operation.

Note: This equipment has been tested and found to comply with the limits for a Class B digital device, pursuant to Part 15 of the FCC Rules. These limits are designed to provide reasonable protection against harmful interference in a residential installation. This equipment generates, uses, and can radiate radio frequency energy, and if not installed and used in accordance with the instructions, may cause harmful interference to radio communications. However, there

www.Herdiotech.com

is no guarantee that interference will not occur in a particular installation. If this equipment does cause harmful interference to radio or television reception, which can be determined by turning the equipment off and on, the user is encouraged to try to correct the interference by one or more of the following measures:

- Reorient or relocate the receiving antenna.
- Increase the separation between the equipment and receiver.
- Connect the equipment into an outlet on a circuit different from that to which the receiver is connected.
- Consult the dealer or an experienced radio/TV technician for help.

This equipment complies with FCC radiation exposure limits set forth for an uncontrolled environment. This equipment should be installed and operated with a minimum distance of 20cm between the radiator & your body. This transmitter must not be co-located or operating in conjunction with any other antenna or transmitter.

www.Herdiotech.com

Bluetooth Connectivity (Only For Bluetooth Version):

1. Make sure the Bluetooth Ceiling Speaker system is properly connected to a power Source, and speaker wires are connected correctly.
2. Power ON the speaker system, and you shall hear hear a tone indicating the Bluetooth system is ready for pairing.
3. Then, go to your Smart device's Bluetooth Network Settings, The Bluetooth Network Name will appear as 'Herdio' on your device list, and click for connection.No password is required to connect but if you are prompted enter '0000' (4 zeroes).
4. You shall hear another indication tone when a successful Bluetooth connection is established, then you are ready to enjoy the music.

www.Herdiotech.com

WARRANTY

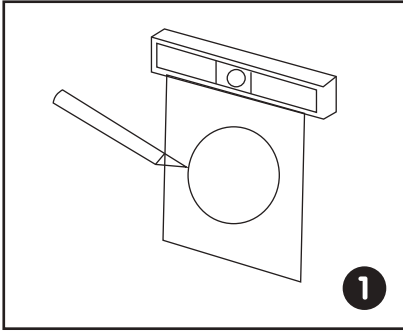
All Herdio speaker products have 1 year Limited Warranty against defects in materials and workmanship. Proof of purchase must accompany all claims. During the warranty period Herdio will replace any defective part and correct any defect in workmanship without charge for either parts or labor.

TECHNICAL SPECIFICATIONS

Total Speaker Diameter:	7.09"(180mm)	
Total Speaker Depth:	3.35"(85mm)	
Cut-Out Diameter:	5.31"(135mm)	
Mounting Depth:	2.48"(63mm)	
Impedance:	4 Ohms	
Frequency Response:	60Hz-18kHz	
Power Handling(Max):	120 W	
SPL(1Watt / 1Meter):	91dB	
Product Material:	Molded ABS Plastic Basket	

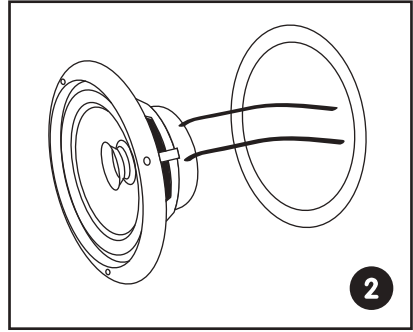
www.Herdiotech.com

INATALLATION GUIDE :

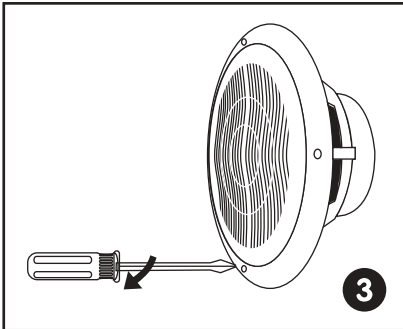


Cut the drywall.

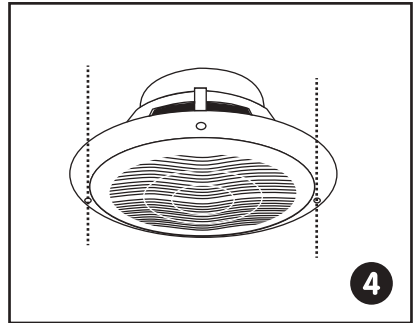
Note: Always allow at least one-half inch between a wall stud and the speaker cutout or the locking tabs will not be able to swivel into place.



Connect the speaker wires to the speaker.



Screw down each of the four Phillips head screws. The locking tabs will swivel into place and secure the unit to the rear surface of the drywall. Put in the strips of adhesive to secure the grille.

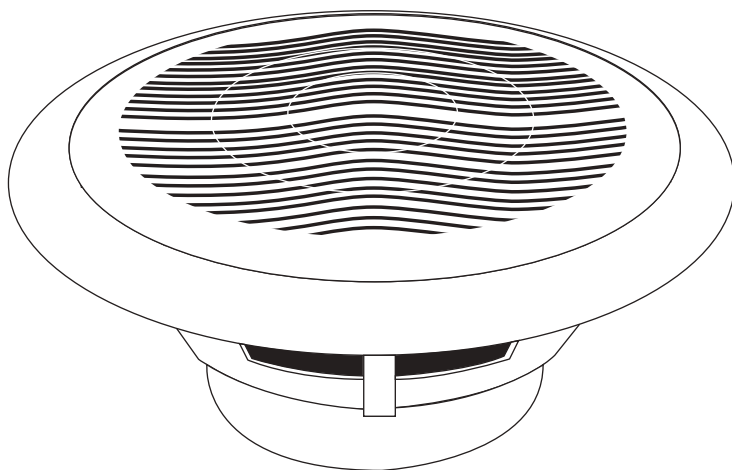


Replace the metal grille.

www.Herdiotech.com

Herdio®

**6.5" ZOII WASSERDICHTER
MARINE-LAUTSPRACHER**



HMS-6005



Benutzerhandbuch

www.Herdiotech.com

Deutsch

Bluetooth-Verbindung (Nur Bluetooth-Version):

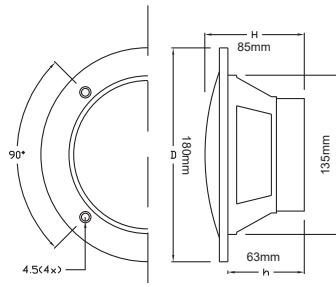
1. Stellen Sie sicher, dass der Bluetooth-Deckenlautsprecher an die Stromversorgung angeschlossen und das Audiokabel korrekt angeschlossen ist.
2. Wenn der Lautsprecher eingeschaltet ist, hören Sie die Aufforderung, dass das Bluetooth-System für die Verbindung bereit ist.
3. Öffnen Sie dann die Bluetooth-Einstellungen Ihres intelligenten Geräts, suchen Sie den Bluetooth-Namen "Herdio" in der Geräteliste und klicken Sie auf , um eine Verbindung herzustellen. Geben Sie ggf. das Passwort 0000 ein.
4. Nachdem die Verbindung erfolgreich hergestellt wurde, ertönt eine Sprachaufforderung, und dann können Sie Musik genießen.

www.Herdiotech.com

Qualitätssicherung

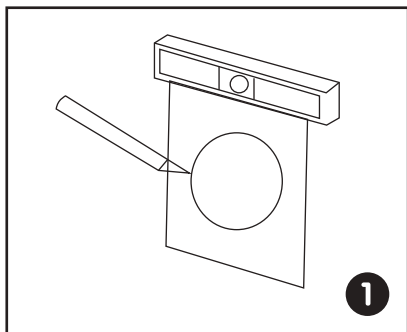
Für die Material- und Verarbeitungsqualität aller Herdio-Lautsprecher gibt es eine einjährige beschränkte Garantie. Der Kaufnachweis muss bei der Reklamation vorgelegt werden. Während der Garantiezeit ersetzt Herdio die beschädigten Teile kostenlos und repariert die Produkte. Der Kunde braucht keine Lohnkosten zu bezahlen.

SPEZIFIKATIONEN

Produkt Durchmesser:	7.09"(180mm)	 <p>The technical drawing consists of two parts. On the left is a side view of a semi-circular speaker component, showing a 90-degree arc and a depth of 4.5 units (4x). On the right is a front view of the speaker, showing a rectangular shape with a depth of 63mm, a width of 85mm, and a height of 135mm. A dimension 'D' is indicated for the depth of the speaker's body.</p>
Produkt Montage:	3.35"(85mm)	
Durchmesser Der Bohrung:	5.31"(135mm)	
Tiefe Der Montage:	2.48"(63mm)	
Impedanz:	4 Ohms	
Frequenzgang:	60Hz-18kHz	
Max. Ausgangsleistung:	120 W	
SPL(1Watt / 1Metro):	91dB	
Produkts Material:	Kunststoffkorb aus Kunststoff	

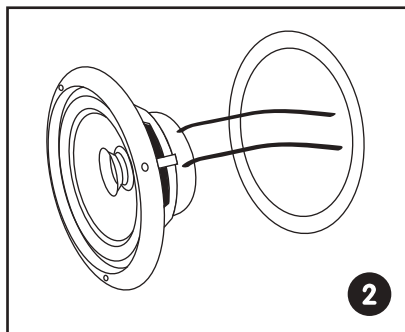
www.Herdiotech.com

INSTALLATION:

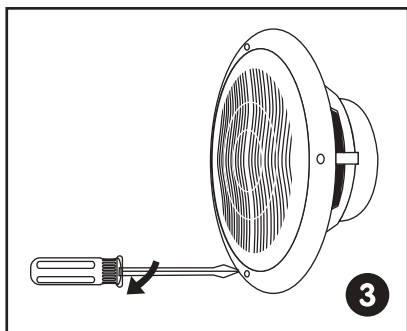


Zu lochenden Gipsplatten Schneiden.

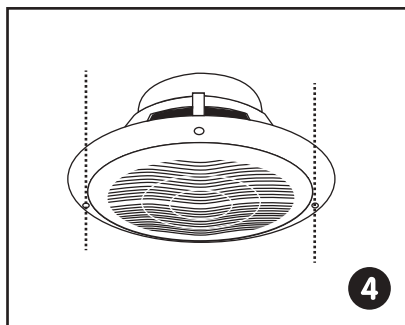
Hinweis: Halten Sie einen Abstand von 0.5 Zoll zwischen dem Wandnagel und dem Lautsprecherausschnitt ein, sonst kann die Verriegelung nicht dreht und einrastet.



Lautsprecherkabel an Lautsprecher angeschlossen.



Ziehen Sie die vier Kreuzschrauben fest, dann dreht sich die Verriegelungsplatte und fixiert das Gerät an der Rückseite der Gipsplatte.

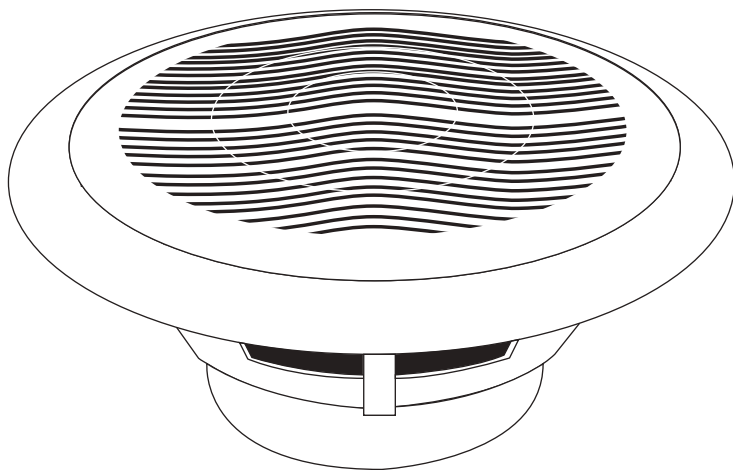


Installieren Sie eine Metallnetzabdeckung der Lautsprecher.

www.Herdiotech.com

Herdio®

6.5" IMPERMEABILE MARINI ALTOPARLANTI



HMS-6005



Manuale Di Istruzioni

www.Herdiotech.com

Italiano

Connessione Bluetooth (Solo Versione Bluetooth):

1. Accertarsi che l'altoparlante da soffitto Bluetooth sia collegato all'alimentazione e che il cavo dell'altoparlante sia collegato correttamente.
2. Quando il sistema di altoparlanti è acceso, sentirai il messaggio che il sistema Bluetooth è pronto per la connessione.
3. Quindi, apri le impostazioni di rete Bluetooth del tuo dispositivo smart, trova il nome Bluetooth "Herdio" nell'elenco dei dispositivi e fai clic su Connetti. Se hai bisogno di una password, inserisci 0000
4. Al termine della connessione, verrà visualizzato un messaggio vocale, quindi è possibile iniziare a ascoltare la musica.

www.Herdiotech.com

Garanzia Di Qualità

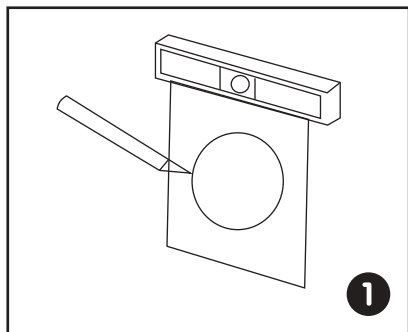
Esiste una garanzia limitata di un anno perimateriali e la lavorazione di tutti i prodotti per altoparlanti herdio. La prova di acquisto deve essere fornita al momento del reclamo. Durante il periodo di garanzia, herdio sostituirà le parti danneggiate gratuitamente, riparerà i problemi di fabbricazione del prodotto e il cliente non deve pagare il costo del lavoro.

SPECIFICHE TECNICHE

Diametro Facciale Esterno:	7.09"(180mm)	 <p>The technical drawing shows two views of a speaker. The left view is a front view of a semi-circular speaker with a 90-degree angle and a diameter of 180mm. It has two terminals labeled '4.5(4x)'. The right view is a side view showing a depth of 135mm, a mounting hole diameter of 85mm, a depth of 63mm, and a height 'h'. The overall diameter 'D' is also indicated as 180mm.</p>
Diametro Facciale Montaggio:	3.35"(85mm)	
Diametro Del Foro:	5.31"(135mm)	
Profondità Di Montaggio:	2.48"(63mm)	
Impedenza:	4 Ohms	
Risposta In Frequenza:	60Hz-18kHz	
Potenza Massima In Uscita:	120 W	
SPL(1Watt / 1Metro):	91dB	
Prodotto Materiale:	Cestino di plastica di ABS	

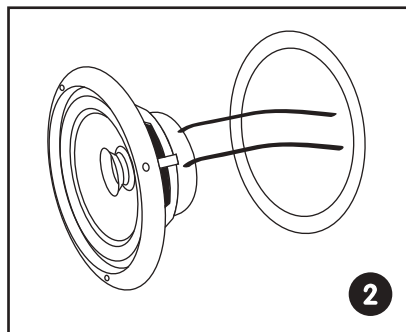
www.Herdiotech.com

PROCEDURA GUIDATA DI INSTALLAZIONE:

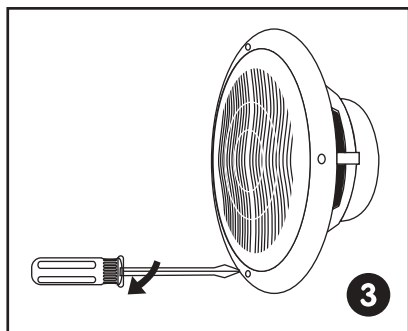


Taglia il cartongesso.

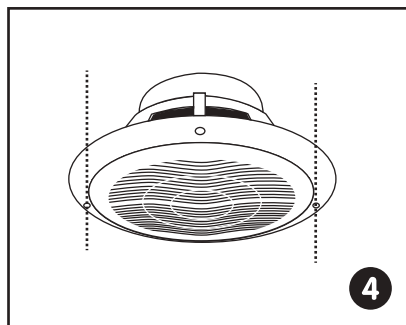
Nota: Consentire sempre almeno un centimetro tra uno stallone a muro e l'altoparlante cutout o le schede di chiusura non saranno in grado ruotare sul posto.



Collega i fili dell'altoparlante all'altoparlante.



Abbassa la testa di quattro Phillips. Le schede di chiusura gireranno in luogo e assicurare l'unit à alla superficie posteriore del cartongesso. Mettere le strisce di adesivo a Mettete al sicuro la griglia.

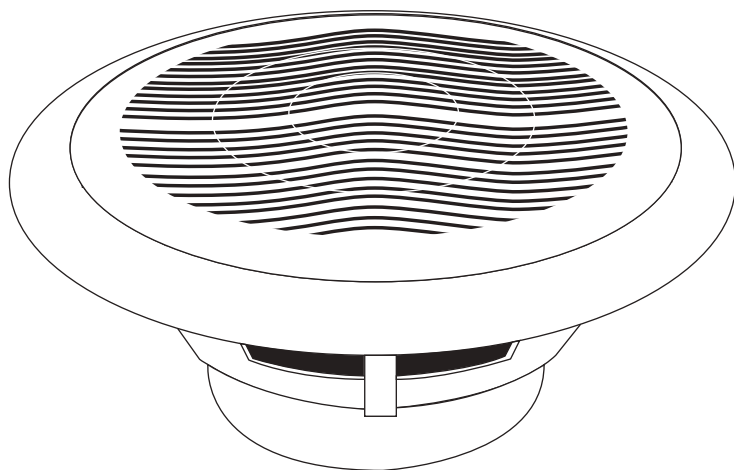


Sostituire la griglia metallica.

www.Herdiotech.com

Herdio®

6.5" ÉTANCHES MARINS HAUT - PARLEURS



HMS-6005



Manuel D'Instructions

www.Herdiotech.com

Français

Connexion Bluetooth (Uniquement Applicable À La Version Bluetooth):

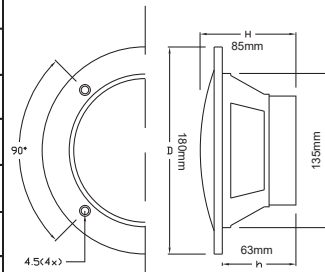
1. Assurez-vous que le haut-parleur de plafond Bluetooth est branché sur la prise électrique et que le câble du haut-parleur est correctement mis à la terre.
2. Après avoir allumé le système de haut-parleur, vous entendrez l'invite vocale indiquant que le système Bluetooth est prêt à effectuer la connexion
3. Ensuite, accédez aux Paramètres du réseau Bluetooth de votre appareil intelligent, trouvez le nom "Herdio" Bluetooth dans la liste des appareils, cliquez pour établir la connexion. Si un mot de passe est requis, veuillez entrer 0000.
4. Une fois la connexion établie, vous pourrez entendre une invite vocale, ainsi, vous pourrez commencer à apprécier la musique.

www.Herdiotech.com

Garantie De Qualité

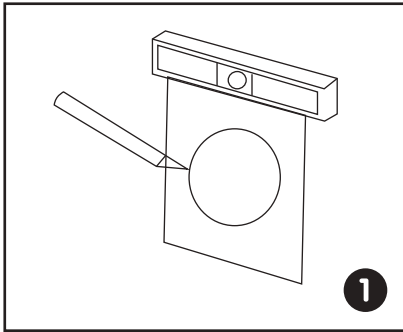
La garantie limitée d'un an couvre les défauts de matériaux et de fabrication les produits de haut-parleur de Herdio. La preuve d'achat doit être fournie pour demander un service de garantie. Pendant la période de garantie, Herdio remplacera les pièces endommagées et réparera le produit gratuitement si nécessaire, le client n'a pas besoin de payer des frais de main-d'œuvre.

SPÉCIFICATIONS TECHNIQUES

Diamètre Facial Extérieur:	7.09"(180mm)	 <p>The technical drawing shows two views of a speaker. The left view is a front view of a circular speaker with a diameter of 180mm. It features a 90-degree arc and four mounting points, each with a diameter of 4.5mm. The right view is a side view showing the depth of the speaker. The total depth is 135mm, with a mounting flange of 85mm and a main body of 63mm. The depth of the main body is labeled as 'h'.</p>
Diamètre Facial D'Installation:	3.35"(85mm)	
Diamètre Du Trou Ouvert:	5.31"(135mm)	
Profondeur D'Installation:	2.48"(63mm)	
Impédance:	4 Ohms	
Réponse En Fréquence:	60Hz-18kHz	
Puissance De Sortie Maximale:	120 W	
SPL(1Watt / 1Mètre):	91dB	
Matériaux De Produit:	Panier en plastique ABS moulé	

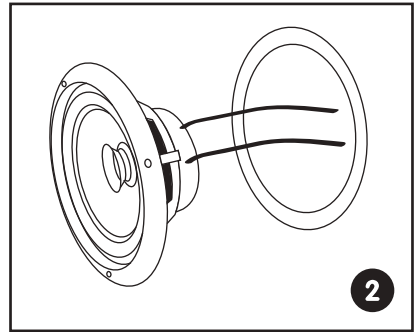
www.Herdiotech.com

COMMENT INSTALLER:

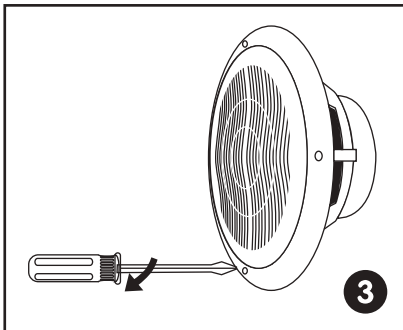


Coupez le panneau de plâtre au trou ouvert.

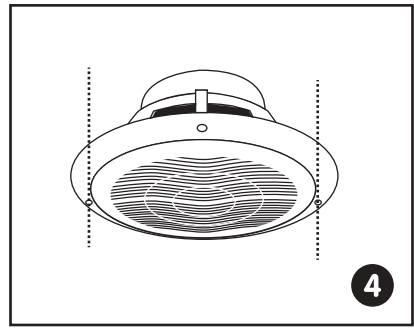
Remarque: Laissez un espace de 0.5 pouce entre le clou mural et l'entaille du haut-parleur, sinon le verrou ne pourra pas être tourné et fixé en place.



Connectez le fil du haut-parleur au haut-parleur.



Après que les quatre vis cruciformes sont serrés, la pièce de verrouillage tournera. Fixez le dispositif à la surface arrière de la plaque de plâtre.

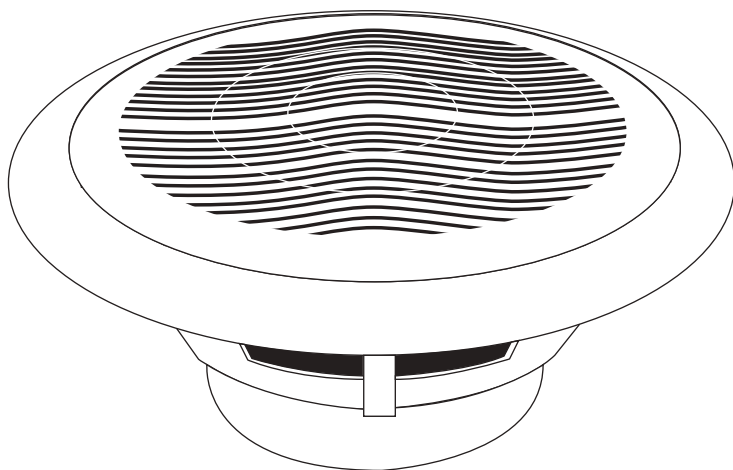


Appuyez sur le couvercle dans le sens de l'image avec l'ensemble Haut-parleur.

www.Herdiotech.com

Herdio®

6.5" IMPERMEABLE MARINOS ALTAVOCES



HMS-6005



Manual De Instrucciones

www.Herdiotech.com

Español

Conexión De Bluetooth (Sólo Para Versión De Bluetooth):

1. Asegúrese de que Bluetooth electrónica de audiodo techo esté conectada a la fuente de alimentación y que el cable del altavoz esté conectado correctamente.
2. Después de encender el sistema de electrónica de audio, escuchará el tono de aviso de que el sistema de Bluetooth está esperando para conectarse.
3. Luego, abra la configuración de red de Bluetooth de su dispositivo inteligente, busque el nombre de Bluetooth "Herdio" en la lista de dispositivos y haga clic en Conectar, si necesita la contraseña, ingrese 0000 por favor
4. Después de conectar exitosamente, habrá un tono de aviso de voz y luego podrá empezar a disfrutar de la música.

www.Herdiotech.com

Garantía De Calidad

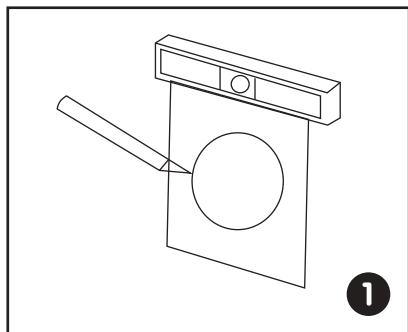
Sobre los materiales y la mano de obra de todos los productos de electrónica de audio de Herdio, se proporciona la garantía limitada de un año. El cliente se debe presentar un comprobante de compra al hacer un reclamo. Durante el período de garantía, Herdio reemplazará las piezas dañadas de forma gratuita reparará la mano de obra del producto y el cliente no tendrá que pagar los costos de mano de obra.

ESPECIFICACIONES TÉCNICAS

Diámetro Facial Exterior:	7.09"(180mm)	 <p>The technical drawing shows a speaker with a semi-circular front face. The front view is a semi-circle with a diameter of 180mm. The side view shows a depth of 63mm and a mounting hole diameter of 85mm. The mounting hole is positioned 4.54 units from the top and bottom edges. The speaker is labeled with '90°' and '4.5(4x)'. The side view also shows a height of 135mm and a width of 63mm.</p>
Diámetro Facial De Instalación:	3.35"(85mm)	
Diámetro Del Agujero:	5.31"(135mm)	
Profundidad De Instalación:	2.48"(63mm)	
Impedancia:	4 Ohms	
Respuesta De Frecuencia:	60Hz-18kHz	
Máxima Potencia De Salida:	120 W	
SPL(1Vatio / 1Metro):	91dB	
Producto Material:	ABS Plastics Cesta	

www.Herdiotech.com

GUÍA DE INSTALACIÓN:



Corta la pared seca.

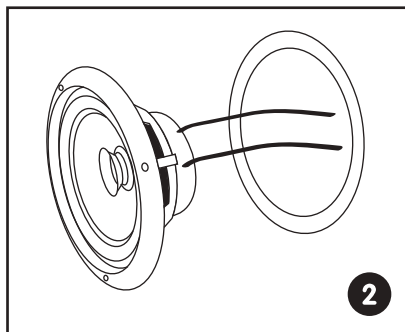
Nota: siempre permita al menos

Partición de media pulgada

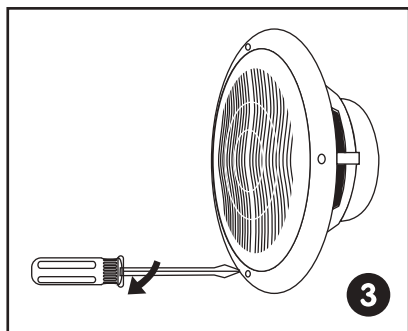
Interruptores de perno y altavoz o

Las pestañas de bloqueo no se abrirán

Gire en su lugar.

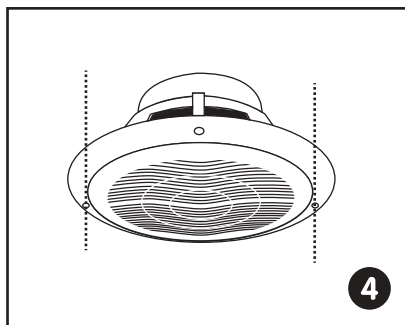


Connectez le fil du haut-parleur au haut-parleur.



Après que les quatre vis cruciformes sont serrés, la pièce de verrouillage tournera.

Fixez le dispositif à la surface arrière de la plaque de plâtre.



Appuyez sur le couvercle dans le sens de l'image avec l'ensemble Haut-parleur.

www.Herdiotech.com