

Herdio®

UNIVERSAL BLUETOOTH AMPLIFIER

AMP-BTX01

IMPORTANT SAFETY PRECATIONS

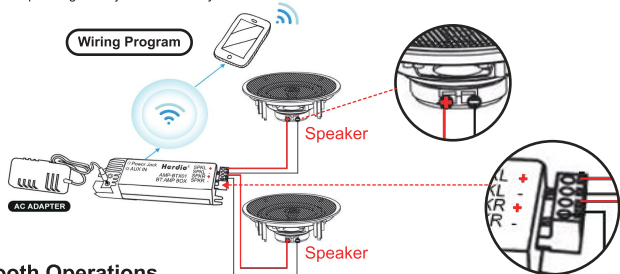
FCC Requirement

Changes or modifications not expressly approved by the party responsible for compliance could void the user's authority to operate the equipment. This device complies with Part 15 of the FCC Rules. Operation is subject to the following two conditions:

(1) This device may not cause harmful interference.

(2) This device must accept any interference received, including interference that may cause undesired operation.

This equipment complies with FCC radiation exposure limits set forth for an uncontrolled environment. This equipment should be installed and operated with a minimum distance of 20cm between the radiator & your body. This transmitter must not be co-located or operating in conjunction with any other antenna or transmitter.



Bluetooth Operations

1. Make sure the speaker wires connect to the Bluetooth amplifier box correctly, The red speaker wire connects to positive (+) on amplifier box, the black speaker wire to the ground (-) on amplifier box. Then insert the power AC Adapter to the amplifier box Power Jack, Please double check the wiring.
2. The Herdio Bluetooth amplifier Box is waiting for being paired right at
3. Turn on the Bluetooth on your Bluetooth device, scan for the unit Bluetooth Name "HCSXXX", "HMSXXX", "Hosxxx", Click it to connect.
4. You will hear a confirmation tone to indicate that the connection is made successfully. The Herdio Bluetooth amplifier Box then is ready to stream music from your device.
5. Please make sure the Bluetooth is turned on at your device. When the device is in Bluetooth range, it will connect Bluetooth automatically, and will be disconnected automatically when it is out of Bluetooth range.

SPECIFICATIONS

- Built-in 2 Channel Amplifier
- 4.0 Bluetooth Wireless Music Streaming
- 3.5mm Auxiliary Input

Herdio®

UNIVERSAL BLUETOOTH AMPLIFIER

AMP-BTX01

IMPORTANT SAFETY PRECATIONS

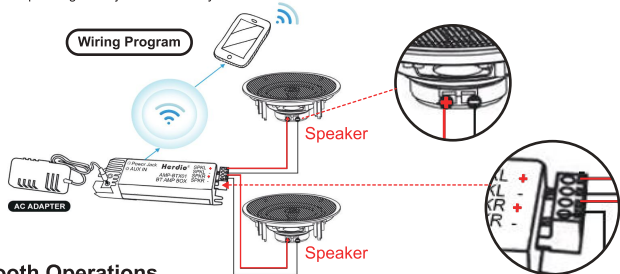
FCC Requirement

Changes or modifications not expressly approved by the party responsible for compliance could void the user's authority to operate the equipment. This device complies with Part 15 of the FCC Rules. Operation is subject to the following two conditions:

(1) This device may not cause harmful interference.

(2) This device must accept any interference received, including interference that may cause undesired operation.

This equipment complies with FCC radiation exposure limits set forth for an uncontrolled environment. This equipment should be installed and operated with a minimum distance of 20cm between the radiator & your body. This transmitter must not be co-located or operating in conjunction with any other antenna or transmitter.



Bluetooth Operations

1. Make sure the speaker wires connect to the Bluetooth amplifier box correctly, The red speaker wire connects to positive (+) on amplifier box, the black speaker wire to the ground (-) on amplifier box. Then insert the power AC Adapter to the amplifier box Power Jack, Please double check the wiring.
2. The Herdio Bluetooth amplifier Box is waiting for being paired right at
3. Turn on the Bluetooth on your Bluetooth device, scan for the unit Bluetooth Name "HCSXXX", "HMSXXX", "Hosxxx", Click it to connect.
4. You will hear a confirmation tone to indicate that the connection is made successfully. The Herdio Bluetooth amplifier Box then is ready to stream music from your device.
5. Please make sure the Bluetooth is turned on at your device. When the device is in Bluetooth range, it will connect Bluetooth automatically, and will be disconnected automatically when it is out of Bluetooth range.

SPECIFICATIONS

- Built-in 2 Channel Amplifier
- 4.0 Bluetooth Wireless Music Streaming
- 3.5mm Auxiliary Input