

4.5



BEYOND SECURITY

KABA[®]

Electronics

Electric Strikes



OCTOBER 2015

KES - Electronic Solutions

Kaba offers a broad range of electric strikes and accessories to suit most electronic locking solutions.





INDEX

Electric Strikes

- 2 KES100 ordering details
- 3 KES1500 ordering details
- 4 KES200Z ordering details
- 5 KES2200 ordering details

Electric Strikes

KES100 : Non Monitored Electric Strike

SPECIFICATION

The KES100 Series ANSI electric strike is an economical choice, offering dual voltage 12/24V as standard and an interchangeable Fail safe/fail secure feature. It is constructed of solid zinc alloy housing, a stainless steel keeper and stainless steel face plate.

Designed for use with large selection of morticed type locks and has a keeper depth of 16mm.

Also included in in package is a 202mm long faceplate, making a single model suitable for all types of wooden, steel and aluminium door frames. Supplied as standard with trim plate to cover any damage to frame during installation.

Dimensions

Short face plate: 124L x 43.5W x 29.5D (mm)

Long face plate: 202L x 43.5W x 29.5D (mm)

Features

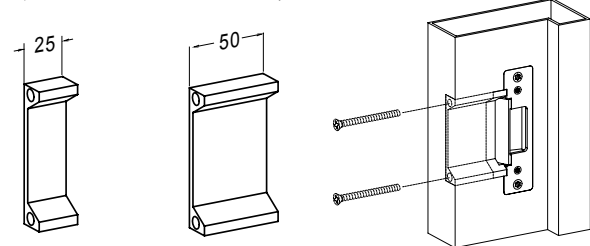
- Fail safe/fail secure interchangeable
- Dual voltage 12/24VDC
- 16mm keeper (allowing 19mm latch throw)
- Includes long face plate for timber frame installation
- Includes trim plate
- Holding force 700kgs (1500lbs)

Specification

- Operating voltage 12/24VDC
- Voltage tolerance +/-15%
- Current draw 250mA/12VDC, 150mA/24VDC
- Operating temperature -10° C ~ +45° C
- Humidity 0~95%
- Latch throw 19mm
- Material: Zinc alloy body, stainless steel faceplate and keeper
- CE Approved

Optional Accessories

Lip extension brackets for wide jamb.

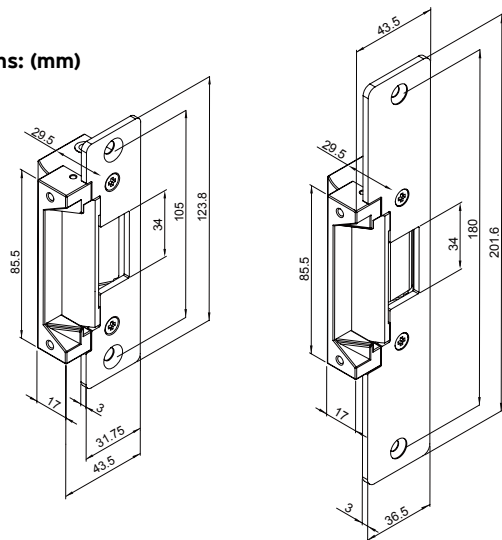


KESLP125

KESLP150



Dimensions: (mm)

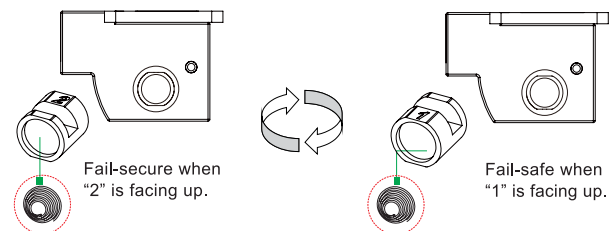


SHORT FACE PLATE

LONG FACE PLATE

Version Changeable

The KES100 Series Electric Strike can easily be changed between fail safe and fail secure modes.



Control Mode

PRODUCT CODE	DESCRIPTION
KES100	ANSI Sized Electric 12/24VDC, Non Monitored
ACCESSORIES	
KESLP125	Lip Extension 25mm, suit KES100
KESLP150	Lip Extension 50mm, suit KES100

Electric Strikes

KES200Z : Non Monitored Electric Strike

SPECIFICATION

The KES200Z Series is an economical electric strike, designed for use with a large selection of mortice, key in knob and key in lever type locks in both timber and metal frames. The KES200Z also offers variable voltage from 12VAC/DC to 28VAC/DC as well as a fast and convenient interchangeable fail safe/fail secure function (changeable on site).

Construction materials include a solid zinc alloy housing and a stainless steel keeper. The unit comes pre-drilled for the optional extension lips. Also included in package is an installation kit for metal frame installation.



Dimensions

175L x 44W x 27D (mm)



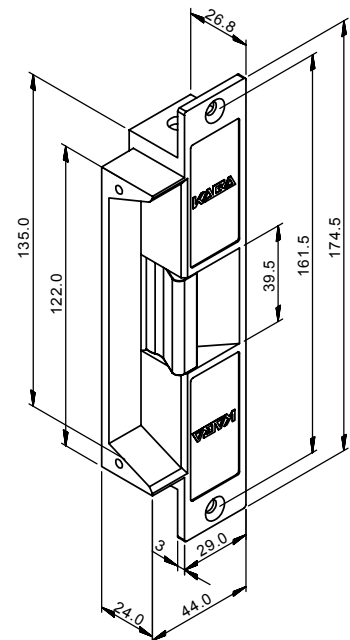
Features

- Fail safe/fail secure interchangeable
- Variable voltage 12~28VAC/DC
- Suits latch depth up to 15mm
- Pre-drilled for optional extension lips
- Includes mounting tabs for metal frame

Specification

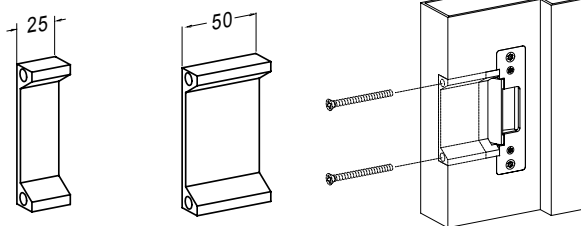
- Operating voltage variable 12~28VAC/DC
- Voltage tolerance +/- 15%
- Current draw: 12VDC/210mA, 24VDC/140mA (at temperature 20°C)
- Operating temperature: -10°C~45°C
- Humidity: 0-95% non-condensing
- Tested to 1,000,000 cycles
- CE Approved

Dimensions: (mm)



Optional Accessories

Lip extension brackets for wide jamb

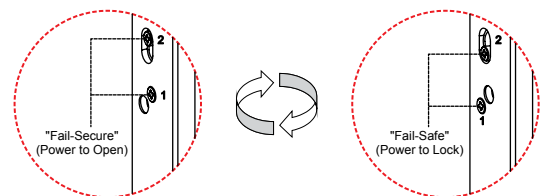


KESLP2250

KESLP2225

Version Changeable

The KES200Z Series Electric Strike can easily be changed between fail safe and fail secure modes.



PRODUCT CODE	DESCRIPTION
KES200Z	Electric Strike, Zinc Alloy 12~28VDC/AC, Non Monitored

ACCESSORIES

KESLP2225	Lip Extension 25mm, suit KES2200 Electric Strike
KESLP2250	Lip Extension 50mm, suit KES2200 Electric Strike

Electric Strikes

KES2200 : Fully Monitored Electric Strike

SPECIFICATION

The KES2200 Series is a high security electric strike, offering a single model including switch monitoring of latch, strike and solenoid, variable voltage from 12VDC/AC to 28VDC/AC, a fast and convenient interchangeable fail safe/fail secure function (changeable on site). The construction of housing and keeper are of stainless steel and include pre-drilled holes for optional extension lips. Also included in package is an installation kit for metal frame installation.



Dimensions

175L x 44W x 27D (mm)



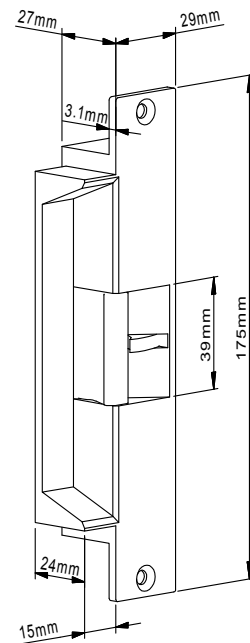
Features

- Fail safe/fail secure interchangeable
- Variable voltage 12~24VDC
- Suits latch depth up to 15mm
- Monitored latch, strike and solenoid
- Pre-drilled for optional extension lips
- Includes mounting tabs for metal frame
- Solid stainless steel construction

Specification

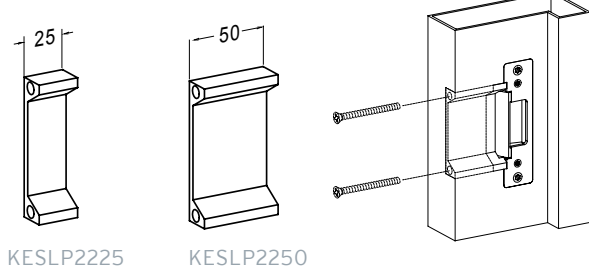
- Operating voltage variable 12~24VDC
- Voltage tolerance +/- 15%
- Current draw: 12VDC/190mA, 24VDC/130mA (at temperature 20°C)
- Latch/Keeper Micro Switch Rating: 1A/125VAC
- Operating temperature: -10°C~45°C
- Humidity: 0-95%
- Cycle tested to 1 million cycles
- 2 hour fire rating
- CE Certified
- C-Tick

Dimensions: (mm)



Optional Accessories

Lip extension brackets for wide jamb.

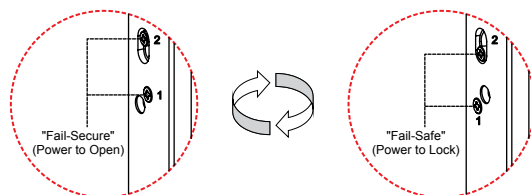


KESLP2225

KESLP2250

Version Changeable

The KES2200 Series Electric Strike can easily be changed between fail safe and fail secure modes.



PRODUCT CODE	DESCRIPTION
KES2200	Electric Strike, Heavy duty 12~28VDC/AC, Monitored
ACCESSORIES	
KESLP2225	Lip Extension 25mm, suit KES2200 Electric Strike
KESLP2250	Lip Extension 50mm, suit KES2200 Electric Strike

Electric Strikes

KES1500 : Rim Mounted Electric Strike

SPECIFICATION

The KES1500 Series Rim Mounted Electric Strike is an economical choice, offering dual voltage 12/24V as standard and an interchangeable fail safe/fail secure feature. It is constructed of a solid zinc alloy housing, stainless steel keeper and stainless steel face plate.

Designed for use with a large selection of rim mounted lock types.

Dimensions

60L x 86W x 28.5D (mm)

Features

- Fail safe/fail secure interchangeable
- Dual voltage 12/24V
- Suits latch depth up to 15mm
- Holding force: up to 900kg (2000lb)

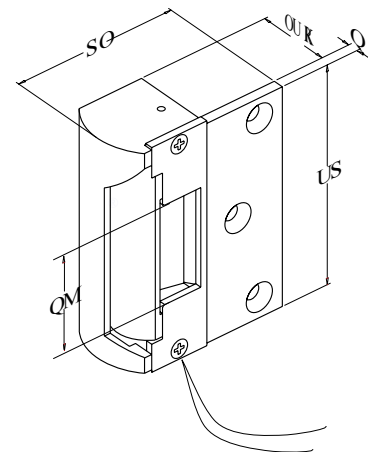


Specification

- Operating voltage 12/24V
- Current draw: 0.25 A/12VDC: 0.15 A/24VDC - (at temperature 20°C)
- Operating temperature -10 ~ 45°C
- Humidity: 0~95% non-condensing
- Tested to 1 million cycles
- Material: Zinc alloy body and stainless steel faceplate and release lip
- CE Approved
- C-Tick



Dimensions: (mm)



PRODUCT CODE	DESCRIPTION
KES1500	Rim Mounted Electric Strike 12/24V, Non Monitored

