

A close-up photograph of a woman with voluminous, curly, light brown hair relaxing in a hot tub. The water is filled with white, frothy bubbles that partially cover her chest and shoulders. The background is dark, making the woman and the bubbles stand out. The overall mood is serene and relaxing.

natural Spa factory®

RE:OPEN YOUR SOUL

*with new
re:solutions*

WINTER TREATMENT MENU



RE:OPEN YOUR SOUL

with new re:solutions

As we approach the season of goodwill and new year's resolutions, we think of Christmas and spending time with loved ones both friends and family, it's a time to cherish these bonds and create magical memories. Whether it's decorating the tree together or singing carols, these traditions help create a sense of continuity, nostalgia and togetherness. Considering what would bring joy and happiness to your loved ones is when the act of giving becomes more meaningful reflecting your understanding and appreciation for them.

Big scary resolutions are so last year. Focus on achievable small wins you can stick with, which help us feel better in the long term. Allow time to appreciate ourselves and reconnect, this can be as simple as setting aside a few minutes each day to engage in mindfulness exercises, such as deep breathing or meditation, to cultivate a sense of calm and presence. Focus on developing a positive outlook by practicing gratitude, reframing negative thoughts, and surrounding yourself with uplifting influences. Make it a resolution to experiment with different scents and fragrances to find ones that bring you joy, relaxation, or inspiration. This can be through candles, essential oils, or perfumes.

a little self care

a little self care

Remember to listen to your body and take time to relax and unwind as self-care is the new health care. Our exquisite gentle formulations are drawn from the healing power of nature; this treatment features products with anti-bacterial rose water, antiseptic tea tree, soothing chamomile, nourishing vitamin E, anti-oxidising pomegranate and green tea, and collagen-stimulating jojoba along with the fresh burst of watermelon and yuzu to stimulate those senses taking you to memories of warmer days with a fruity burst of watermelon!

CLEANSE – using Damascene Melting Cleanser, using circular motions to melt away dirt and make up from the face. **REMOVE** – with hot mitts.

POLISH – with Ab:scent Facial Polish. **REMOVE** – excess with hot mitts.

MASK – with Bilberry & Chamomile Peel Off Face Mask. Apply a thick layer and leave.

BUFF – neck, shoulder & décolletage with Yuzu, Pink Beets & Watermelon Body Scrub providing a light blast of delicious scents. **BUFF** – away with hot mitts.

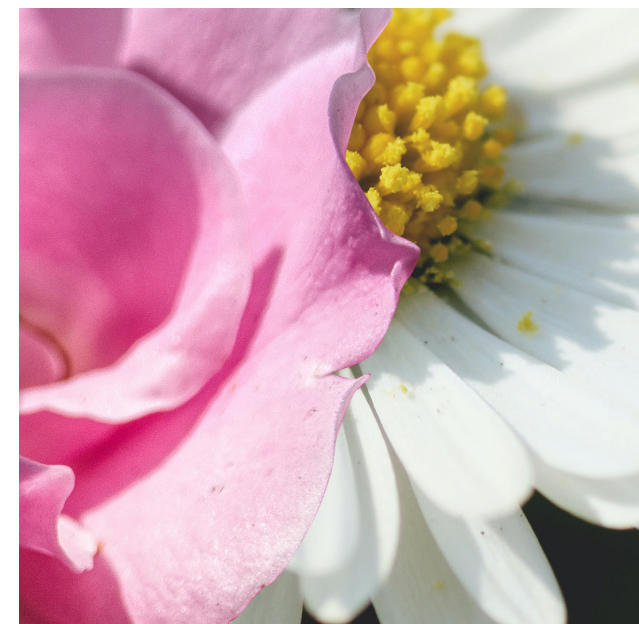
REMOVE MASK – peel from the neck up, removing excess with warm mitts.

TONE – spritz with Boosting Face Tonic.

MASSAGE – face, neck, shoulders & décolletage with the Rosehip Oil, renewing skin cells.

MOISTURISE – using the Everyday Cream.

TOP TIP – why not take home the Youthful Self:care Regime gift set to recreate some of these delights at home.



Damascene Melting Cleanser 50ml | 1kg
 Ab:scent Facial Polish 50ml | 250ml
 Bilberry & Chamomile Peel Off Face Mask 30g
 Yuzu, Pink Beets & Watermelon Body Scrub 250ml | 5kg
 Boosting Face Tonic 200ml | 1ltr | 5ltr

total body care



total body care

Take a moment, to take in the scents of the winter spices, which will exfoliate the body and renew the skin. Indulge using the gold wrap with its perfect combination of grape leaf, pearl and caviar extract, this glorious gold shine with skin loving ingredients promotes healthy ageing and a healthy glow. Finish with the aroma of mandarin, cinnamon and patchouli. Evoking memories of cosy nights in.

SET THE SCENE – light the Adamo Candle, filling the room with its amazing scent.

START – with buffing the body with the heavenly Adamo Body Scrub.

BUFF – away with hot mitts.

APPLY – this luxurious velvet Gold Fine Anti-Ageing Body Wrap, leave customer enveloped in towels, whilst the body benefits from its anti-aging properties

DRIZZLE – using the warmed Adamo Bath & Massage Oil onto feet and massage in for a relaxing massage whilst the wrap gets to work.

REMOVE – wrap with a warm towel or shower off.

MASSAGE – to finish, with warmed Adamo Massage Oil drizzled onto the body for a full body massage.

Adamo Candle
 Adamo Body Scrub 250g | 4kg
 Gold Fine Anti-Ageing Body Wrap 2kg
 Adamo Bath & Massage Oil 50ml | 1ltr



self love

self love

Take some time for self-reflection. Use this treatment time to explore your feelings and emotions, things you are grateful for and moments we treasure, indulge in the cozy scents of winter pear and the uplifting scents of ginger and sweet orange, to help relax and invigorate senses.

START – with buffing the back and top of legs with this beautiful seasonally fragranced Pear & Nigella Seed Body Salt Scrub.

BUFF – away with hot mitts.

APPLY – warming Ginger, Sweet Orange & Cocoa Bean Body Wrap. Leave customer enveloped in towels, whilst the back and top of legs benefits from an invigorating boost of energy to help rejuvenate a sluggish system.

DRIZZLE – using the Hydrating Face & Body Milk, massaging lower legs, whilst the wrap gets to work.

REMOVE – wrap with a warm towel or shower off.

MASSAGE – back and top of legs with Hydrating Face & Body Milk to finish.



Pear & Nigella Seed Body Salt Scrub 250g | 4kg
 Ginger, Sweet Orange & Cocoa Bean Body Wrap 2.5kg
 Hydrating Face & Body Milk 200ml | 1ltr | 5ltr

top to toe care



top to toe care

Our signature scent gives a delightful pairing, with floral and creamy notes of vanilla complementing the natural sweetness of figs. This treatment will soothe and simultaneously deeply scrub and finely polish legs and feet, leaving them silky smooth, hydrated and smelling skincredible!

WASH – feet and lower legs with Fig & Vanilla Hand Wash

SCRUB – feet and lower legs with the nourishing Fig & Vanilla Salted Body Crush.

RINSE – with warm water to remove scrub.

MASSAGE – feet and lower legs with Fig & Vanilla Hand Cream.

Fig & Vanilla Hand Wash 250ml | 5ltr
 Fig & Vanilla Salted Body Crush 250g | 5kg
 Fig & Vanilla Hand Cream 250ml | 5ltr



radiance glow

radiance glow

We have packed a number of our healthy aging products in one treatment to leave you feeling totally uplifted and rejuvenated. Lemongrass essential oil is renowned for its benefit in helping to relieve pain in muscles and joints, while its zesty fragrance will uplift spirit and help fight depression. It has soothing, sedating and calming effects on mind, works to help cure inflammation, itching of skin and relieve tension and anxiety. How can you not be illuminated by the radiance, achieved through this treatment.

CLEANSE – using Illuminate Melting Cleanser, using circular motions to melt away dirt and make up from the face.

REMOVE – with hot mitts.

POLISH – with Illuminate Facial Polish.

REMOVE – any excess with hot mitts.

MASK – using Cucumber Peel Off Face Mask, apply a thick layer.

MASSAGE – hands and arms with the fresh fragrance of Lime & Lemongrass Body Scrub providing velvet skin.

REMOVE MASK – peel from the neck up, removing excess with warm mitts.

TONE – spritz Illuminate Facial Toner.

MOISTURISE – using the Illuminate Face Serum followed by the Illuminate Moisturiser.



Illuminate Melting Cleanser 50ml | 500ml, Illuminate Facial Polish 50ml | 250ml, Cucumber Peel Off Face Mask 50g, Lime & Lemongrass Body Scrub 250g | 5kg, Illuminate Facial Toner 50ml | 500ml, Illuminate Face Serum 15ml | 100ml, Illuminate Moisturiser 50ml | 250ml

A close-up, profile view of a person's face, focusing on the nose and lips. The lighting is soft and warm, highlighting the texture of the skin. The text "rosey love" is written in a white, elegant, cursive font across the lower part of the face.

rosey love



rosey love

Roses are often seen as the symbol of love. The fragrance of rose is known to evoke feelings of romance, with mood lifting properties, promoting relaxation and a sense of wellbeing. With the combination of Mediterranean charm and the ambiance of this treatment it is the perfect luxurious touch to soothe and calm the mind and soul while experiencing a luxurious massage. Feel the Love.

SET THE SCENE – light the Rose massage candle, filling the room with its amazing, floral scent.

START – by cleansing the feet with floating rose petals in the water, before asking the client to get onto the bed.

BUFF – the body with the new beautiful Mediterranean Charm Sugar Scrub.

REMOVE – with a warm towel or shower off.

MASSAGE – to finish, with warmed Rose Oil drizzled onto the body for a full body massage.

REMOVE MASK – peel from the neck up, removing excess with warm mitts.

TOP TIP – Sprinkle rose petals on the bed to create that romantic feel.

Rose Massage Oil Candle 35g
Mediterranean Charm Sugar Scrub 300g | 4kg



indulgent massage

indulgent massage

Our divinely scented Tiare Monoi Body Oil Treatment is perfect for those looking for an indulgent and nourishing treat for your skin. Our Coconut and Monoi based product melts into a light and silky oil that absorbs into the skin with ease, leaving it beautifully fragranced, nourished and radiant. Sourced from the beautiful coral shores of the Polynesian Islands, the superior blend of Monoi and Coconut oils have been used by Polynesian women as a beauty remedy for hair and skin for more than 2000 years for its intensely nourishing properties, leaving skin looking smooth, radiant and immensely soft whilst delicately fragranced by this exotic flower to help restore mindful peace and harmony. You'll be treated to a little taste of the magic of Polynesia!

SET THE SCENE – light the Tiare Monoi Massage Oil Candle and set a relaxing mood in the room.

MASSAGE – drizzle the oil over the body and start a relaxing massage.

This treatment can be done as a 30 or 60 minute massage.

TOP TIP – this oil is a fantastic moisturiser – a great take home item for a nourishing moisturiser after a hot bath or for areas of dry skin.



Tiare Monoi Massage Oil Candle 170g