

**KATO**

# Mini Excavator HD85V5

A 8.5 ton zero tail swing mini excavator  
with exceptional performance



**EARTHMOVING  
WAREHOUSE**

# Mini Excavator



## HD85V5

A 8.5 ton zero tail swing mini excavator with exceptional performance

### Features

- Newly designed operator's space
- Reduced tail swing
- Easy maintenance
- Low fuel consumption
- Powerful digging & quick response
- Factory fit anti burst valves
- Air conditioned
- Stereo

### Safety

- Gate lock system
- Neutral engine start
- ROPS cabin
- Auto parking brake in swing & traction motors

### Durability

- Easily adjustable pins for longer life
- Castle nuts for boom & arm joints
- Single structured swing pin

### Easy Maintenance

- Large side covers for easy access & maintenance
- Wide, fully opening engine cover enables ease of maintenance
- Filters are conveniently located - Includes:  
Large fuel filter, water separator & tank breather



### Comfortable Operating Room



**Centralised switches** - includes key start, throttle dial, auto idle & eco mode



**Easily visible monitor** - includes travel speed, auto idle, eco mode, hour meter & engine management



**Full suspension seat**  
- c/w retracting seat belt



**Control Lever with proportional switch for auxiliary hydraulic**



**Traction foot pedals (fold away)**





# Mini Excavator



## Easy maintenance



Large rear access for easy engine maintenance



Large side cover for easy service access



Water separator with indicator

## Safety



Gate Lock System

## Durability



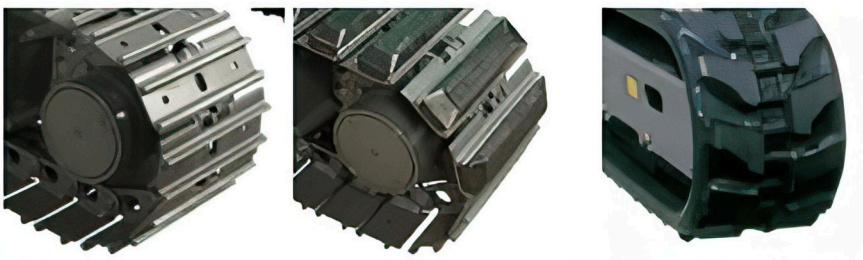
Single-structured Swing Pin

## Easy fuel refilling



Fuel refill located in a convenient position

## Track options



Steel Track / Rubber Pad / Rubber Track Options

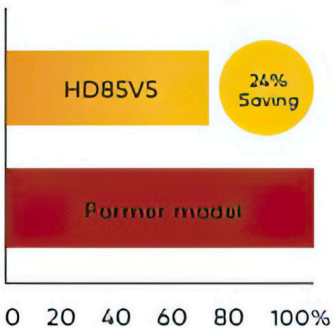
## Easy skimming work



Close distance between Bucket Tooth and Dozer Blade

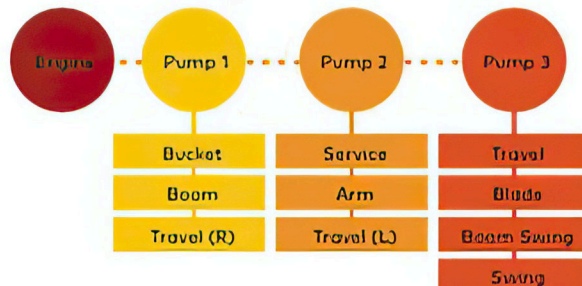
## Lower Fuel Consumption

Max. 24% fuel saving\*



## High Digging Power & Quick Response

Digging force increased by 10%  
Highly responsive 3-pump system



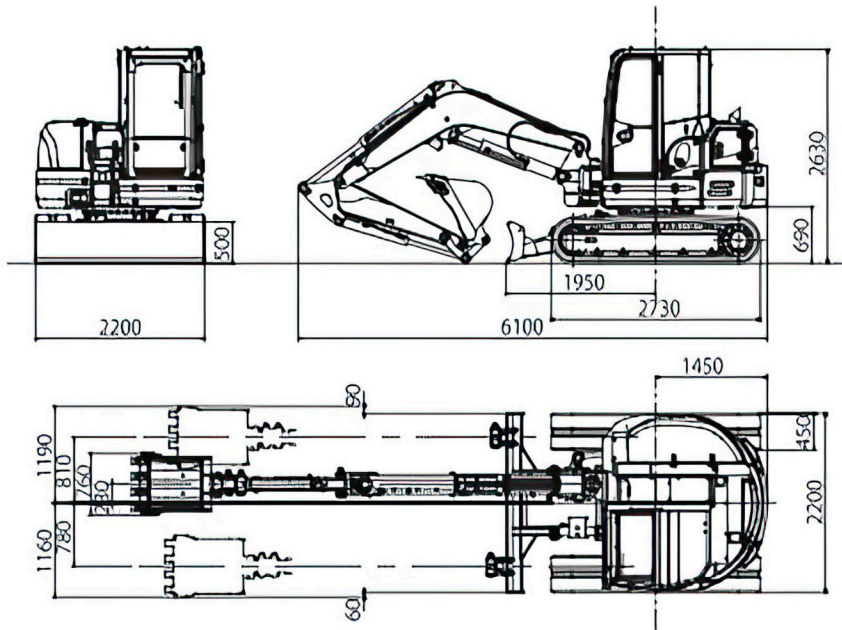


# HD85V5 Mini Excavator

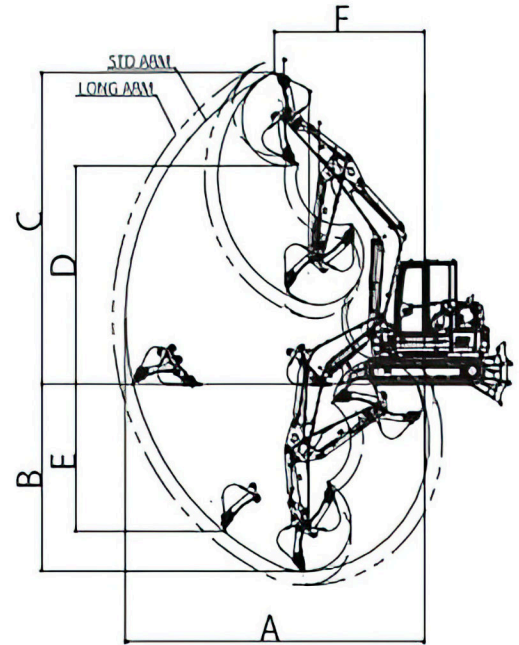


## SPECIFICATIONS

### ■ Dimensions (Units mm)



### ■ Working Range (Units mm)



### STANDARD

- ROPS cabin
- Auxiliary piping
- Flashing light
- Removable counter weight
- Rubber tracks

### OPTIONS

- Rubber pads
- Short arm
- Air conditioning

	Long arm	Short arm option
A. Max. digging radius	7110	6830
B. Max. digging depth	4320	4020
C. Max. digging height	6920	6700
D. Max. dumping height	4910	4700
E. Max. vertical digging depth	3460	3170
F. Min. front turning radius	2720	2640
At right boom swing	2240	2150

Performance		Boom swing system	
Bucket capacity	0.25m <sup>3</sup>	Type	Boom offset with hydraulic cylinder
Bucket width (Standard)	760mm	Swing angle (L/R)	50°/80°
Operating weight: 4-Post(Cabin)	8515 kg	Hydraulic system	
Transportation weight: 4-Post(Cabin)	8440 kg	Pressure	28.5MPa 250kgf/cm <sup>2</sup> / 20.6MPa 210kgf/cm <sup>2</sup>
Swing speed	9.0min <sup>-1</sup>	Pump hydraulic flow	75.6L/minx2 = 44.2L/min
Travel speed (low/high)	2.5 / 4.4km/h	Dozer blade	
Gradeability	58% (30°)	Size	2200x500mm
Ground pressure	39kPa (0.39kgf/cm <sup>2</sup> )	Lift above ground / Drop below ground	420mm / 440mm
Max bucket digging force	55kN	Max auxiliary flow	
Engine		1st Auxiliary line	60L/min
Model	YANMAR 4TNV 98C	2nd Auxiliary line	44L/min (Option)
Rated output	44.3kW / 2100min <sup>-1</sup>		
Fuel tank capacity	110L		

\*Note: Depending on factory availability & changes specifications may vary from above.

## Product Range:



HD19VXT

HD25V5

HD30V5

Available through



earthmovingwarehouse.com.au

0459927346 (0459 WAREHOUSE)  
Shed C1/C2 194 Zillmere Road,  
Boondall Brisbane 4034  
QLD

## PARTS AND SERVICE

We are proud of the back-up service we offer to customers. The importance of stocking genuine spare parts for all the equipment we supply is a high company priority.