

I'D RATHER BE BLUE

FIERCELY CURIOUS 

Blue is the color of the sky and the sea. It is an expression of trust, loyalty, wisdom, confidence and strength. It is calming - emanating peace and tranquility. Blue has become the identifying color of the Democratic party and of harmony. It is also associated with the fifth chakra, located at the throat and therefore connects us to communication and truth. However, we are all familiar with the winter blues bringing sadness upon us. This universal color holds infinite depth.

In my quest for a show that reflects these ideals - invigorating and enlightening the senses, while pushing away the winter blues and celebrating harmony and truth (which we so desperately need at this time), Matilde Alessandra and Edward Granger were obvious choices.

These two artists communicate a vibrant energy not only through their hand and line quality, but also through the study of light and progressive / regressive forms. Their works reference depth and our perception of it. By layering up paint and line they can choose to either draw you into a deep focal point or direct you into the light. Their immediacy conveyed in their energetic brush and pen strokes recall my own feelings of urgency to action and togetherness in this political climate. Doing and undoing. Making progress that is not necessarily a straight path.

We hope that this show will wrap you with the light of these artists work to resonate with you further than the doors of this gallery. May their playful and optimistic spirits leave your winter blues behind.

The title for this show comes from I'd Rather Be Blue, a light wall sculpture by Matilde Alessandra.

Erin Przekop

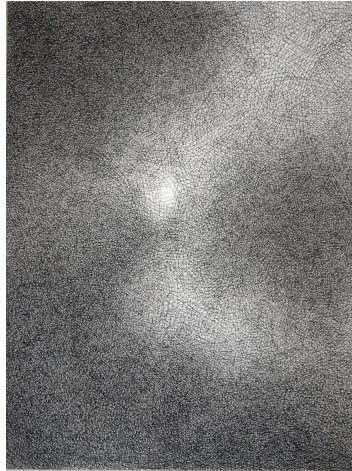
xx

Inquiries: erin@fiercelycurious / 917.922.8250
fiercelycurious.com

MATILDE ALESSANDRA



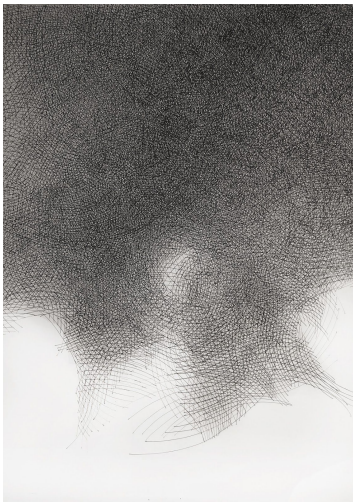
Blue
2012
Wood, acrylic paint, LEDs
Edition of 3
48 x 48 x 3
\$5500



Untitled #52
Ink on bristol card
18 x 24 Paper
Glass Clip Frame
2016
\$1000



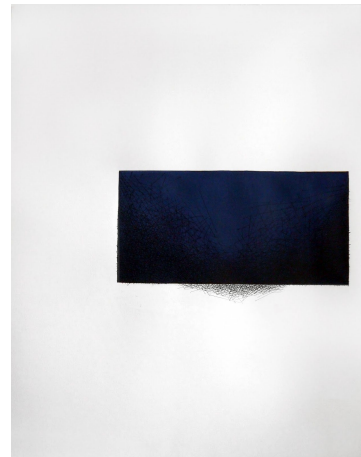
Untitled #54
Acrylic paint, ink on bristol card
18 x 24 Paper
19 x 25 Framed
2017
\$550



Untitled #50
Acrylic paint, ink on bristol card
18 x 24 Paper
Glass Clip Frame
2016
\$950



Untitled #53
Acrylic paint and ink on bristol card
18 x 24 Paper
19 x 25 Framed
2017
\$550

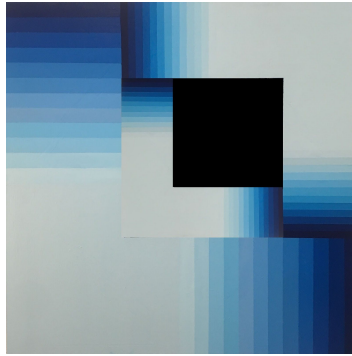


Untitled #55
Acrylic paint, ink on bristol card
18 x 24 Paper
19 x 25 Framed
2017
\$550

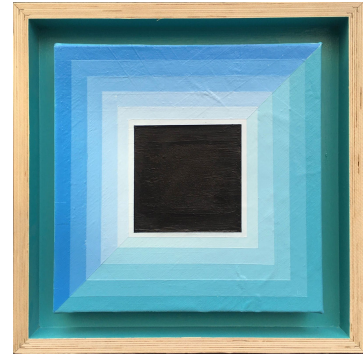
EDWARD GRANGER



After Dark #1
30 x 40
Acrylic, latex, and chalkboard paint
on canvas
2017
\$5,000



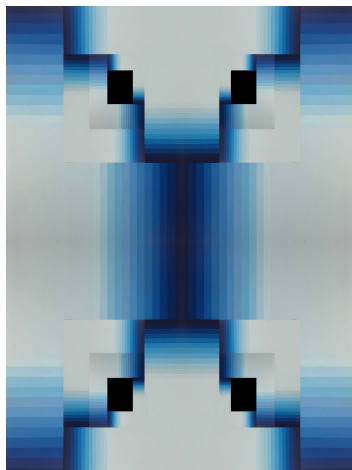
Blue Parallels
48 x 48
Acrylic, latex, and gesso on canvas
2017
\$8,000



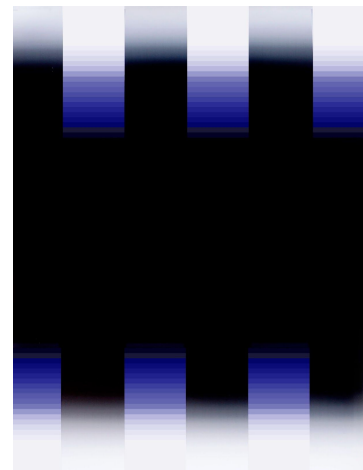
The Blue Abyss
16 x 16
Acrylic, latex and heavy matte gel
medium on canvas
2017
\$1,500



After Dark #2
30 x 40
Acrylic, latex and chalkboard paint on
canvas
2017
\$5,000



Posterize
18 x 24
Acrylic and latex on canvas
2017
\$2,000



Cosmic Parallels
18 x 24
Signed Edition of 50
(40 available)
2017
\$299

Inquiries: erin@fiercelycurious / 917.922.8250
Visit: fiercelycurious.com to see more of these artist's work.