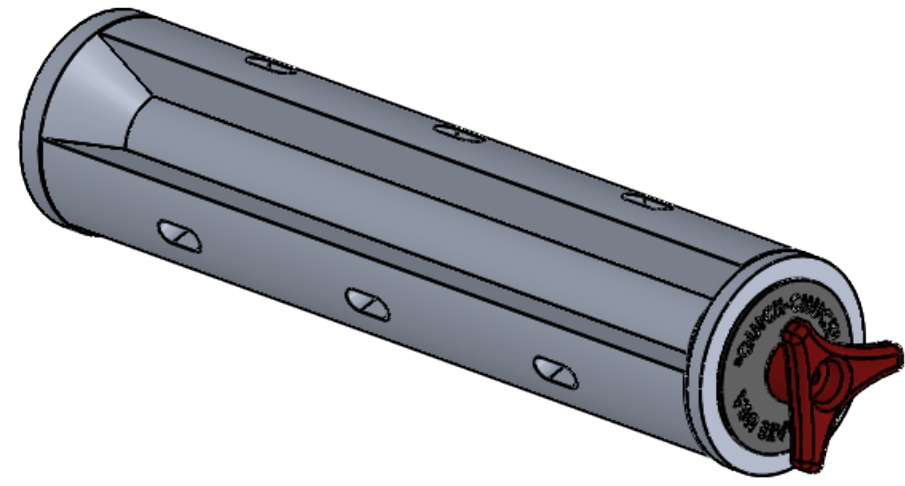


4

3

2

1

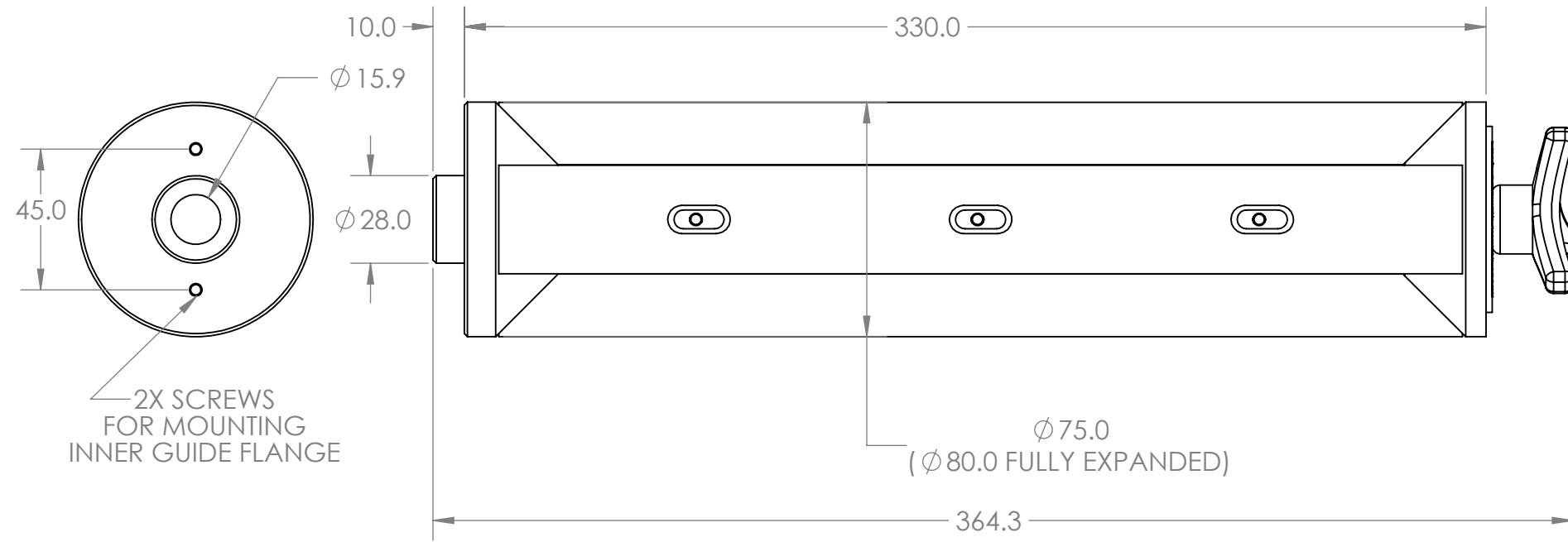


"Quick-Chucks" are precision, maintenance-free Core Chucks for quick loading and unloading of label rolls. They are ideal for heavy rolls and production operations. They grip multiple cores equally, making them perfect for slitting too. "quick-chucks" are well suited to in-house projects and are an easy rugged solution for many OEM applications.

- All "Quick-Chuck" Models fit a 0.625" diameter shaft with a flat. A single setscrew locks the "Quick chuck" to the shaft
- "Quick-Chucks" are supplied with an inner flange and an allen wrench for the setscrew, when included as part of a LABELMATE USA Rewinder or Unwinder
- "Quick-Chucks" are standard on premium LABELMATE USA Rewinder and Unwinder models
- Model: C76-330
- Core Diameter: 3" (76mm)
- Max Width: 13" (330mm)
- Max Width w/ Outer Flange: 12.5" (318mm)

B

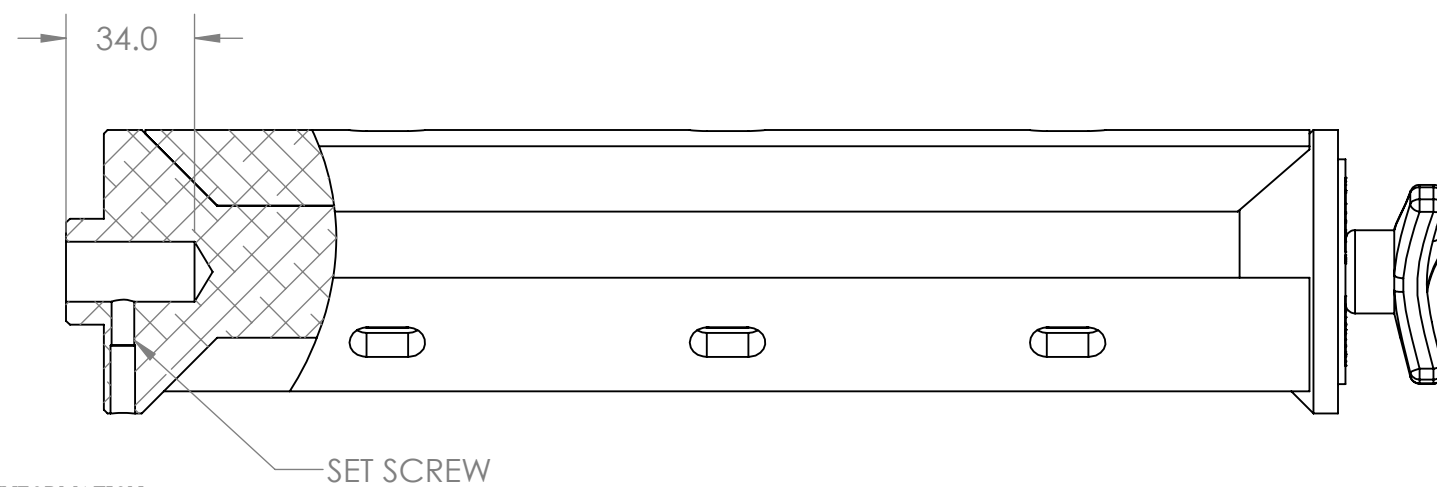
B



2X SCREWS FOR MOUNTING INNER GUIDE FLANGE

A

A



SET SCREW

CONFIDENTIAL AND PROPRIETARY INFORMATION

All design data pertaining to the article shown on this sheet is the property of LABELMATE USA. This information is disclosed in confidence and is not to be copied or reproduced without the written consent of LABELMATE USA.



| | | | |
|--------------------------------------|------------------|--|--------------|
| UNLESS OTHERWISE SPECIFIED: | | 12A Sunset Way, Henderson NV, 89014 | |
| DIMENSIONS ARE IN mm | | ITEM ID: | |
| | | C76-330 | |
| INTERPRET GEOMETRIC TOLERANCING PER: | | | |
| DRAWN BY: THAYNE HANSEN 4/11/2023 | SIZE B | PART NO. 80-197-0008 | REV n/a |
| APPROVED BY: | SCALE: 1:2 | | SHEET 1 OF 1 |
| DO NOT SCALE DRAWING | | | |

4

3

2

1