

Product Limited Warranty

Labelmate USA warrants to the original end-user customer that Labelmate USA products will be free from defects in materials and workmanship for the duration described herein below. Labelmate USA's Limited Warranty covers only those defects that arise as a result of normal use of the products and does not cover any other problems, including those that arise as a result of: (i) improper maintenance or modification; (ii) parts or supplies not provided or supported by Labelmate USA; (iii) operation outside the products' specifications; or (iv) unauthorized repair, modification or misuse. Use of any unauthorized accessory or attachment will void coverage.

The Warranty period for all products commences the date of shipment from Labelmate USA and accrues to the original end-user customer. Warranty coverage is non-transferable and terminates immediately upon rental, resale or any other change in ownership. Original purchase documentation should be retained for Warranty coverage verification.

In the event Labelmate USA substantiates, during the applicable Warranty period, a defect in any product which is covered by Labelmate USA's Warranty, Labelmate USA shall repair or replace the product, at Labelmate USA's option. Labelmate USA retains sole discretion to determine whether or not a product is defective. In no event shall Labelmate USA have any obligation to repair or replace until the customer returns the defective product to Labelmate USA. The customer assumes any and all responsibility and liability associated with transportation of products for service under this Warranty.

WARRANTY PERIOD	PRODUCTS COVERED
5-Years	"CAT" and "Mini CAT" Label Rewinders "UCAT" Label Unwinders
3-Years	Label Counters (Excluding Counter Displays and Encoders) Label Dispensers (Excluding Counter Displays) Label Slitters (Mechanical Parts Only, and excluding Counter Displays) Reel-to-Reel Machines (Excluding Counter Displays and Encoders) Print Mechanisms (Excluding Counter Displays and Encoders) Quick-Chucks
1-Year	Power Supplies, AC/DC Adaptors and Transformers Counter Displays Encoders Any other products or parts not specified herein
180-Days	Out-of-Warranty Repairs

In the event your product requires service or you have questions regarding Warranty coverage, please call toll-free (877) 833-7149 inside the United States, or +1 (702) 435-8535 outside the United States.

LABELMATE MAKES NO OTHER WARRANTY OF ANY KIND, WHETHER EXPRESS OR IMPLIED WARRANTIES OR CONDITIONS OF MERCHANTABILITY, SATISFACTORY QUALITY, AND/OR FITNESS FOR A PARTICULAR PURPOSE. NO OTHER PERSON, AGENT, DEALER OR RESELLER IS AUTHORIZED TO GIVE ANY WARRANTIES ON BEHALF OF LABELMATE. ANY OBLIGATION TO WARRANTY OTHER THAN THAT SPECIFICALLY ADDRESSED HEREIN IS EXPRESSLY DISCLAIMED.

LABELMATE USA LLC

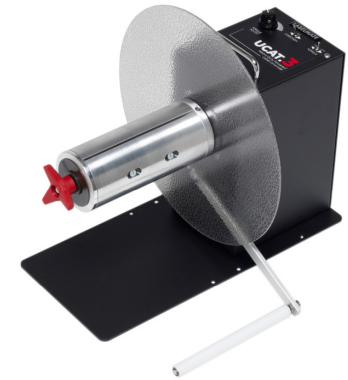
12A Sunset Way, Henderson, NV 89014 USA
(702) 435-8535 FAX (702) 435-8536
Toll-Free (877) 833-7149 in USA!
support@labelmateusa.com

www.labelmateusa.com

LABELMATE USA LLC

UCAT-3

Heavy-Duty "UCAT" On-Demand Powered Unwinder



UCAT-3-CHUCK

- Constant Adjustable Torque™ "CAT" technology
- Switched Directional and Dual Range Control
- Precise Variable Torque Control

Remove all parts from shipping container and verify contents.

Package Contents

- User Manual (this document) & Allen Wrench (es)
- Flange Plate, 2 each or Adjustable Core Holder if Model UCAT-3-ACH was ordered
- UCAT-3 Drive Unit
- AC Wall Transformer with cord
- Rewind Shaft with metal Fins installed or if a "Quick-Chuck" model was ordered, a quick-locking Core Chuck

Retain Shipping Container and Packaging for Storage and Transport.

• **KEEP MANUAL IN A SAFE PLACE FOR FUTURE REFERENCE** •



WARNING

This product is for indoor use only.
 Not for use in wet locations.
 Unplug unit before removing waste material or
 performing any cleaning or maintenance services.



SETUP

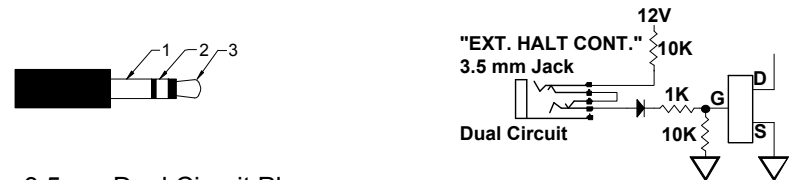
1. The UCAT-3 is bi-directional. It can unwind labels in either direction.
2. The Control Arm can be mounted on either the right or left side of the Unwinder depending upon which direction you wish the labels to exit the UCAT-3. Position the Control Arm on the small Sensor Shaft below the main Motor Shaft. Adjust the Sensor Shaft so the flat side will be in the correct position when the Sensor Arm is positioned as you want it, right or left. Tighten the Set-Screw against the flat on the Control Shaft.
3. (For ACH-CAT Adjustable Core Holder only) Install the Adjustable Core Holder on the flat of the Motor Shaft using the Allen Wrench provided.
4. (Standard Unit only) Identify the inner Label Flange Plate as the one with a regular Allen Screw in the Hub. Slide the Flange Plate onto the end of the Unwind Shaft with the large Hole. The Flange face should be flush with the end of the Shaft. Tighten the Allen screw in the Hub until it is snug. Not too tight. Slide the Shaft and Flange Assembly onto the UCAT-3 Motor Shaft allowing for clearance to the UCAT-3 Chassis and Control Arm. Tighten the Allen screw to secure the Shaft and Flange Assembly until it is snug. Not too tight.
5. (CHUCK Model only) Mount the inner Flange on the Quick-Chuck with two screws provided. Slide the Quick-Chuck onto the Motor Shaft and tighten the set screw against the flat part of the Motor Shaft.
6. Set the unit in place near the label entry path for the printer.
7. CAUTION: AVOID ACCIDENTS. THE UCAT-3 WEIGHS APPROXIMATELY 20 POUNDS (9 KG), SO CHOOSE ONLY A STURDY SURFACE ON WHICH TO SET THE UCAT-3.
8. Verify that the "DIRECTION" Switch on the UCAT-3 Control Panel is in the "OFF" position.
9. Plug the AC Transformer into an appropriate AC power outlet. Plug the small Power Plug into the UCAT-3 Power Input Jack.
10. The unit is now ready for use.

POWER UNWINDING

1. Check that the UCAT-3 Unit is square with the printer.
2. Place the roll of labels to be unwound onto the UCAT-3.
3. Run the labels under the Unwinder Control Arm and into the printer.
4. Place the UCAT-3 DIRECTION switch in the desired position according to which direction you want the UCAT-3 to feed the labels.
5. Place the HIGH / NORMAL Switch in the NORMAL position and set the TORQUE ADJUST about 1/3 rotation from fully CCW as an initial setting.
6. Start your printer and observe how the labels are being fed into the printer.
7. Adjust the TORQUE Control as needed to provide more or less (faster or slower) rewind assistance. As the printer uses the labels, the Control Arm will rise, causing the Unwinder to turn on and feed more labels. As the Unwinder feeds more labels, the labels and the Control Arm will drop down, turning off the Unwinder until more labels are needed and the Control Arm is lifted again.

EXTERNAL HALT CONTROL (Use is Optional)

An External Halt Control jack on the UCAT-3 is for use with external devices capable of utilizing an open circuit halt command. A 3.5mm control cable is required (not included).



3.5mm Dual Circuit Plug

Contact CLOSED=RUN Contact OPEN=HALT

- Pin 1 - No connection (NOT USED)
- Pin 2 - Normally Closed (NC) contact
- Pin 3 - Normally Closed (NC) contact return

MAINTENANCE

The UCAT-3 Unwinder requires no maintenance.