

Product Limited Warranty

Labelmate USA warrants to the original end-user customer that Labelmate USA products will be free from defects in materials and workmanship for the duration described herein below. Labelmate USA's Limited Warranty covers only those defects that arise as a result of normal use of the products and does not cover any other problems, including those that arise as a result of: (i) improper maintenance or modification; (ii) parts or supplies not provided or supported by Labelmate USA; (iii) operation outside the products' specifications; or (iv) unauthorized repair, modification or misuse. Use of any unauthorized accessory or attachment will void coverage.

The Warranty period for all products commences the date of shipment from Labelmate USA and accrues to the original end-user customer. Warranty coverage is non-transferable and terminates immediately upon rental, resale or any other change in ownership. Original purchase documentation should be retained for Warranty coverage verification.

In the event Labelmate USA substantiates, during the applicable Warranty period, a defect in any product which is covered by Labelmate USA's Warranty, Labelmate USA shall repair or replace the product, at Labelmate USA's option. Labelmate USA retains sole discretion to determine whether or not a product is defective. In no event shall Labelmate USA have any obligation to repair or replace until the customer returns the defective product to Labelmate USA. The customer assumes any and all responsibility and liability associated with transportation of products for service under this Warranty.

WARRANTY PERIOD	PRODUCTS COVERED
5-Years	"CAT" and "Mini CAT" Label Rewinders "UCAT" Label Unwinders
3-Years	Label Counters (<i>Excluding Counter Displays and Encoders</i>) Label Dispensers (<i>Excluding Counter Displays</i>) Label Slitters (<i>Mechanical Parts Only, and excluding Counter Displays</i>) Reel-to-Reel Machines (<i>Excluding Counter Displays and Encoders</i>) Print Mechanisms (<i>Excluding Counter Displays and Encoders</i>) Quick-Chucks
1-Year	Power Supplies, AC/DC Adaptors and Transformers Counter Displays Encoders Any other products or parts not specified herein
180-Days	Out-of-Warranty Repairs

In the event your product requires service or you have questions regarding Warranty coverage, please call toll-free (877) 833-7149 inside the United States, or +1 (702) 435-8535 outside the United States.

LABELMATE MAKES NO OTHER WARRANTY OF ANY KIND, WHETHER EXPRESS OR IMPLIED WARRANTIES OR CONDITIONS OF MERCHANTABILITY, SATISFACTORY QUALITY, AND/OR FITNESS FOR A PARTICULAR PURPOSE. NO OTHER PERSON, AGENT, DEALER OR RESELLER IS AUTHORIZED TO GIVE ANY WARRANTIES ON BEHALF OF LABELMATE. ANY OBLIGATION TO WARRANTY OTHER THAN THAT SPECIFICALLY ADDRESSED HEREIN IS EXPRESSLY DISCLAIMED.

LABELMATE USA LLC

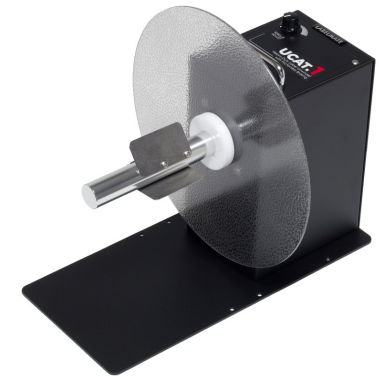
12A Sunset Way, Henderson, NV 89014 USA
(702) 435-8535 FAX (702) 435-8536
Toll-Free (877) 833-7149 in USA!
support@labelmateusa.com

www.labelmateusa.com

LABELMATE USA LLC

UCAT-1

Label Unwinder with Adjustable Braking



UCAT-1 Standard

- Variable Speed Controlled Braking
- Choice of Core Holders
- Non-powered

Remove all parts from shipping container and verify contents.

Package Contents

- User Manual (this document)
- UCAT-1 Unit
- Core Holder with Inner Flange
- Allen Wrench

Retain the Shipping Container and Packaging for Storage and Transport.

• KEEP MANUAL IN A SAFE PLACE FOR FUTURE REFERENCE •



WARNING

This product is for indoor use only.
Not for use in wet locations.
Unplug unit before removing waste material or
performing any cleaning or maintenance services.



SET-UP:

1. Using the supplied Allen Wrench, loosen the set screw and remove the Shaft (with metal Vanes) from the UCAT-1 Motor Shaft.
2. Locate the Label Flange Plate that has a white hub with Allen Screw. Slide the Hub of the Flange Plate onto the hollow end of the Shaft Extension. The plastic Flange disk Hub face should be flush with the end of the Shaft. Tighten the Allen screw in the Hub until it is snug. Note that the Flange plate can be moved out next to the Vanes that hold the 3 inch core if very narrow labels are to be unwound.
3. Slide the Shaft and Flange Assembly back onto the UCAT-1 Motor Shaft allowing for clearance to the UCAT-1 Chassis and Motor Screws. Tighten the Allen screw to secure the Shaft and Flange Assembly until it is snug.
4. Set the unit in place near the label entrance path to the printer or LABELMATE Label Slitter depending on the job to be run.

CAUTION: AVOID ACCIDENTS. THE UCAT-1 BY ITSELF WEIGHS APPROXIMATELY 20 POUNDS (9 KG), SO CHOOSE ONLY A STURDY SURFACE ON WHICH TO SET THE UCAT-1.

The unit is now ready for use.

LABEL UNWINDING FOR PRINTING:

The UCAT-1 is bi-directional and can unwind labels in either direction.

1. Slide the roll of labels to be unwound onto the Shaft of the UCAT-1 and all the way up against the Flange Plate.
2. Thread the labels into the printer as required.
3. The **“BRAKING”** Control Knob adjusts the amount of “Frictionless Braking”™ that will be applied to the label roll being unwound. LABELMATE’s “Frictionless Braking”™ is speed proportional. This means that for large label rolls, you will want the **“BRAKING”** Control Knob turned to a higher setting to provide braking for the slowly turning

roll. For small rolls, you can use a lower braking force setting as the roll will be turning faster.

4. Begin the printing or slitting operation and adjust the **“BRAKING”** Control to provide the least braking that will adequately tension the label roll.

LABEL UNWINDING FOR LABEL SLITTING:

The UCAT-1 Label Rewinder is ideal as part of a setup to slit labels. If small labels are printed several “up” (across) and then slit to their desired width, you realize much greater effective print speed and you also achieve much greater print head and ribbon efficiency.

LABELMATE offers three Label Slitters that can be used with the UCAT-1. The Non-powered Slitters Models S-100 and S-200 use the power of the CAT-2-CHUCK Rewinder to pull the labels through the slitting blades. Slitting can take place either “in-line” directly after exiting the printer, or “off-line” where a roll of printed labels is unwound from a LABELMATE UCAT-1 Label Unwinder.

The Powered Model S-100-SP Slitter can be used with the UCAT-1 and a CAT-2-CHUCK Rewinder in an off-line Slitter setup. Because it is a constant-speed Slitter, the S-100-SP is not suitable for in-line slitting at the output of a printer.

MAINTENANCE:

The UCAT-1 requires no maintenance.