

Product Limited Warranty

Labelmate USA warrants to the original end-user customer that Labelmate USA products will be free from defects in materials and workmanship for the duration described herein below. Labelmate USA's Limited Warranty covers only those defects that arise as a result of normal use of the products and does not cover any other problems, including those that arise as a result of: (i) improper maintenance or modification; (ii) parts or supplies not provided or supported by Labelmate USA; (iii) operation outside the products' specifications; or (iv) unauthorized repair, modification or misuse. Use of any unauthorized accessory or attachment will void coverage.

The Warranty period for all products commences the date of shipment from Labelmate USA and accrues to the original end-user customer. Warranty coverage is non-transferable and terminates immediately upon rental, resale or any other change in ownership. Original purchase documentation should be retained for Warranty coverage verification.

In the event Labelmate USA substantiates, during the applicable Warranty period, a defect in any product which is covered by Labelmate USA's Warranty, Labelmate USA shall repair or replace the product, at Labelmate USA's option. Labelmate USA retains sole discretion to determine whether or not a product is defective. In no event shall Labelmate USA have any obligation to repair or replace until the customer returns the defective product to Labelmate USA. The customer assumes any and all responsibility and liability associated with transportation of products for service under this Warranty.

WARRANTY PERIOD	PRODUCTS COVERED
5-Years	"CAT" and "Mini CAT" Label Rewinders "UCAT" Label Unwinders
3-Years	Label Counters (Excluding Counter Displays and Encoders) Label Dispensers (Excluding Counter Displays) Label Slitters (Mechanical Parts Only, and excluding Counter Displays) Reel-to-Reel Machines (Excluding Counter Displays and Encoders) Print Mechanisms (Excluding Counter Displays and Encoders) Quick-Chucks
1-Year	Power Supplies, AC/DC Adaptors and Transformers Counter Displays Encoders Any other products or parts not specified herein
180-Days	Out-of-Warranty Repairs

In the event your product requires service or you have questions regarding Warranty coverage, please call toll-free (877) 833-7149 inside the United States, or +1 (702) 435-8535 outside the United States.

LABELMATE MAKES NO OTHER WARRANTY OF ANY KIND, WHETHER EXPRESS OR IMPLIED WARRANTIES OR CONDITIONS OF MERCHANTABILITY, SATISFACTORY QUALITY, AND/OR FITNESS FOR A PARTICULAR PURPOSE. NO OTHER PERSON, AGENT, DEALER OR RESELLER IS AUTHORIZED TO GIVE ANY WARRANTIES ON BEHALF OF LABELMATE. ANY OBLIGATION TO WARRANTY OTHER THAN THAT SPECIFICALLY ADDRESSED HEREIN IS EXPRESSLY DISCLAIMED.

LABELMATE USA LLC

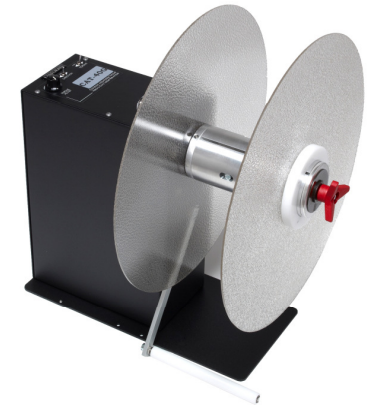
12A Sunset Way, Henderson, NV 89014 USA
(702) 435-8535 FAX (702) 435-8536
Toll-Free (877) 833-7149 in USA!
support@labelmateusa.com

www.labelmateusa.com

LABELMATE USA LLC

CAT-40G

400-mm (16") High-Torque Gear Driven On-Demand Label Rewinder



CAT-40G-SA

- Switched Dual Torque Range and Direction Controls
- Constant Adjustable Torque™ "CAT" technology
- Adjustable Speed Control up to 30" (760-mm) per second
- Precise Variable Torque Control

Remove all parts from the shipping container and verify contents.

Package Contents

- User Manual (this document)
- CAT-40G Drive Unit
- Power Supply Module
- LABELMATE "Quick-Chuck"™ Quick-Locking Core Chuck
- Allen Wrench
- Plastic Flange Plates

Retain the Shipping Container and Packaging for Storage and Transport.

• **KEEP MANUAL IN A SAFE PLACE FOR FUTURE REFERENCE** •



WARNING
 This product is for indoor use only.
 Not for use in wet locations.
 Unplug unit before removing waste material or
 performing any cleaning or maintenance services.



SET-UP:

1. Mount the 400-mm (16") diameter Flange Plate onto the "Quick-Chuck" Core Holder using the screws provided.
2. Slide the "Quick-Chuck" and Flange Assembly onto the CAT-40G Motor Shaft allowing for clearance to the Chassis and Motor Screws. Tighten the Allen screw to secure the "Quick-Chuck" and Flange Assembly onto the Motor.
3. Set the CAT-40G in place near the label exit slot of the printer.
4. **CAUTION: AVOID ACCIDENTS. THE CAT-40G WEIGHS APPROXIMATELY 30 POUNDS (13.6 KG), SO CHOOSE ONLY A STURDY SURFACE ON WHICH TO SET THE UNIT.**
5. The CAT-40G is bi-directional. It can rewind labels in either direction.
6. Verify that the "DIRECTION" Switch on the CAT-40G Control Panel is in the "OFF" position.
7. Plug the Power Plug at the end of the wire on the AC Wall Transformer into the CAT-40G Power Input Jack. Plug the AC Transformer into an appropriate AC power outlet.
8. The unit is now ready for use.

POWER REWINDING:

1. Place the "DIRECTION" Switch on the CAT-40G Control Panel in the center "OFF" position.
2. Slide an empty label core onto the CAT-40G "Quick-Chuck."
3. Feed the label web from the printer under the Sensor Arm, onto the rewind core and secure it with a piece of tape.

4. Place the "DIRECTION" switch in the desired position to rewind the labels.
5. Advance the "TORQUE" Control about 1/3-rotation from fully CCW as an initial setting.
6. Start your printer and observe how the labels are being rewound.
7. Adjust the "TORQUE" Control as needed to provide more or less rewind force. The CAT-40G's amplified-torque motor will provide a nearly constant rewind speed as the roll diameter grows. If necessary, adjust the rewind TORQUE setting.

EXTERNAL HALT CONTROL:

The External Halt Control jack on the CAT-40G is for use with external devices capable of providing an open circuit halt command. A 3.5-mm control cable is necessary for use (not included).

Use of the External Halt Control circuit is optional. With No Connection (nothing plugged into the External Halt Control Jack) the Rewinder will function as described above.

With Pin 2 and Pin 3 of the External Halt Control circuit closed (connected together using a 3.5-mm dual circuit plug) the CAT-40G will operate. When the External Circuit is opened, the CAT-40G will stop.

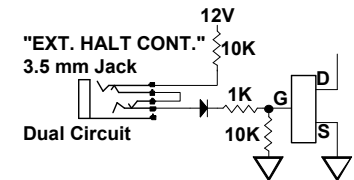
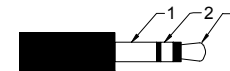
3.5mm Dual Circuit Plug

Contact CLOSED = RUN Contact OPEN = HALT

Pin 1 - No connection (NOT USED)

Pin 2 - Normally Closed (NC) contact

Pin 3 - Normally Closed (NC) contact return



MAINTENANCE

Your CAT-40G Rewinder requires no periodic or preventative maintenance.