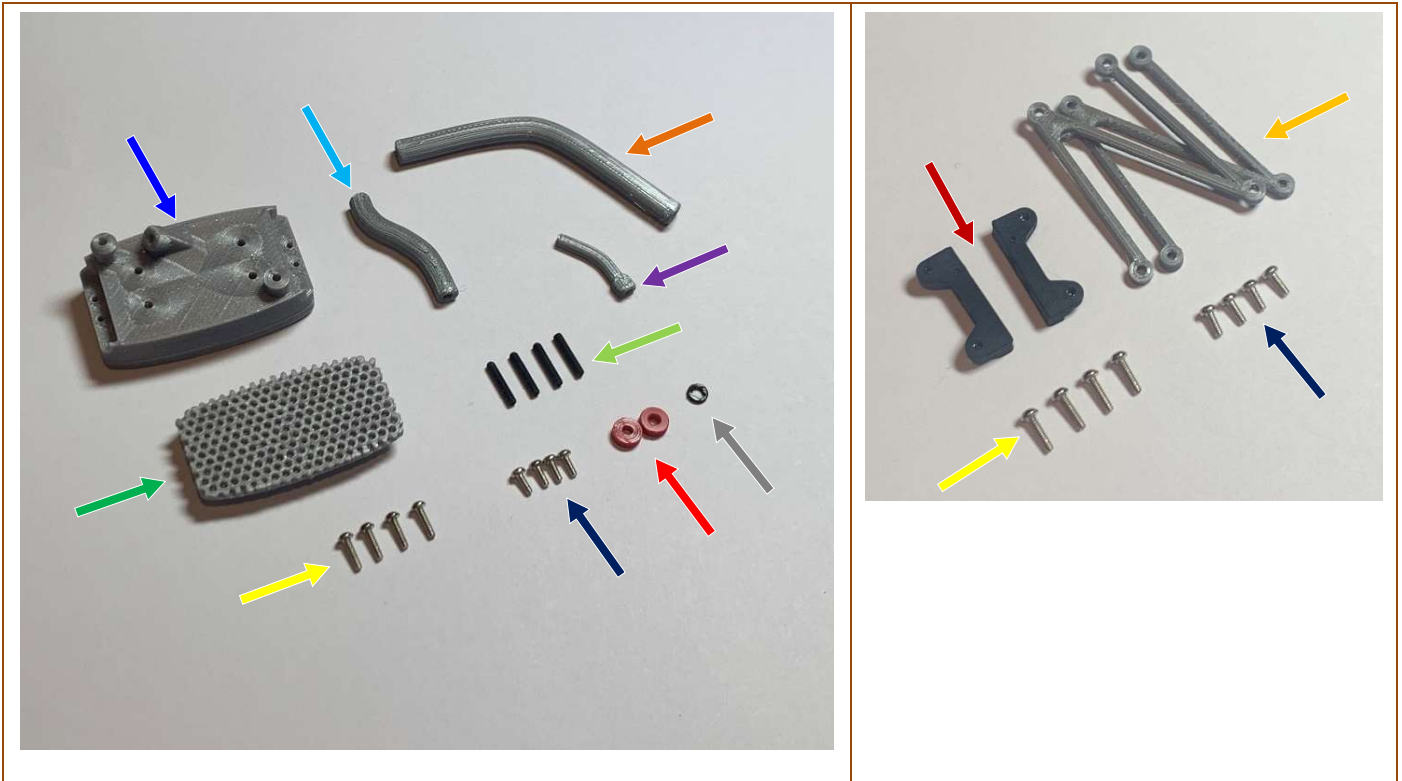




OPTION KIT: Type-L Radiator/Water Tank/Pipes



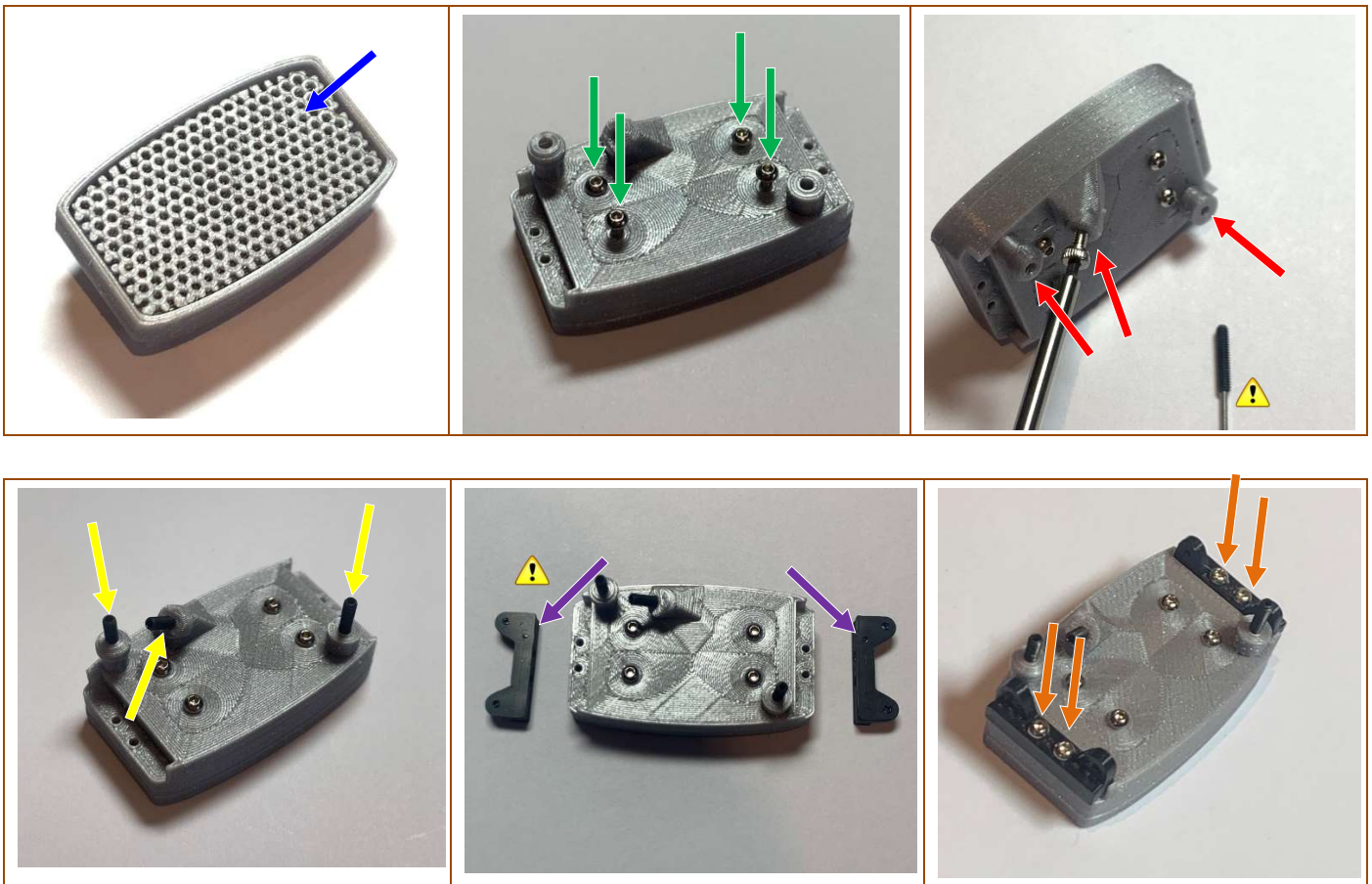
STEP 1 - RADIATOR - PREPARING THE COMPONENTS



***i* For the following steps, please prepare:**

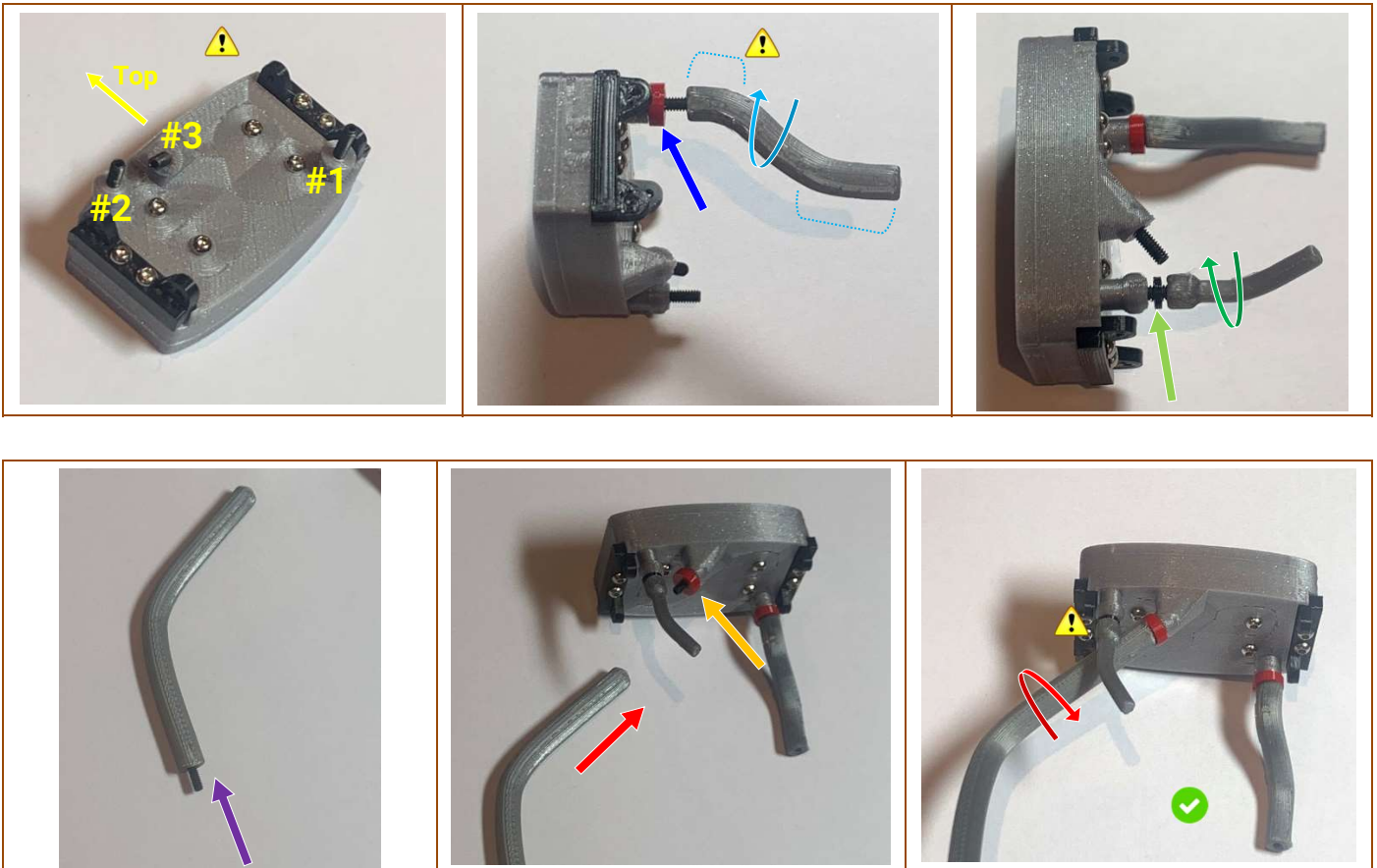
- Radiator Housing (1x)
- Radiator Housing Mounting Bracket (L&R)
- Radiator Support Z-frame (2x)
- Radiator Grill (1x)
- Lower Right Water Pipe (1x)
- Main Water Pipe – Front Section (1x)
- Small Tank Water Pipe (1x)
- Red Hose Spacer (2x)
- Black Hose Spacer (small) (1x)
- M2 grub screw x10mm (4x)
- M1.6 button head bolt x4mm (8x)
- M1.6 button head bolt x6mm (8x)

STEP 2 – RADIATOR ASSEMBLY



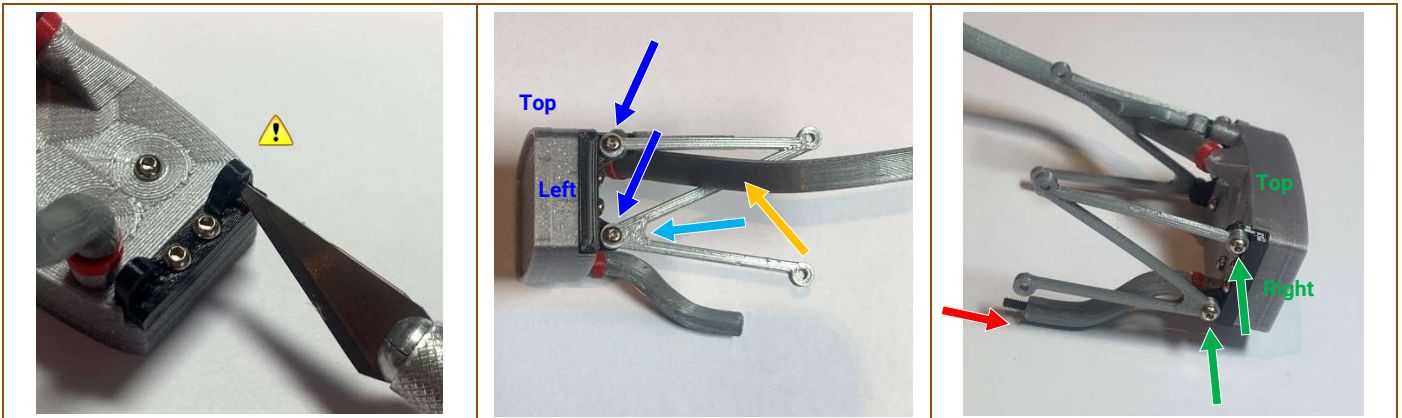
- Press the Radiator Grill into the Radiator Housing. It is symmetrical so top/bottom doesn't matter.
- Secure the Radiator Grill with the 4x M1.6 button head bolt x6mm.
- ⚠ Due to the delicate M2 grub hex we need to tap the 3 holes in the Radiator Housing
- Tap the 3 holes in the Radiator Housing first using a spare/not yet used M2 hex head bolt, no more than ~5mm deep or when the resistance rises.
- Carefully thread in the 3x M2 grub screws x10mm (use the kit included 0.9mm hex key unless you have your own driver). They will thread in approximately 5mm, i.e. ~half the length of the grub screw. This doesn't need to be too precise and ensure to stop threading as soon as the resistance rises.
- ⚠ Note the tiny dot on the flat side of the Radiator Mount Bracket indicates 'top'.
- Layout the Radiator Mount Bracket parts alongside the Radiator assembly as shown, ensuring the flat surface with the 'dot' is placed at the top and towards the centre of the Radiator assembly.
- Attach each Radiator Mount Bracket to its correct side with the M1.6 button head bolts x6mm. Again, ensure the flat side of the Radiator Mount blocks are facing in towards the centre of the Radiator assembly and hence the stepped side is facing outwards.

STEP 3 – RADIATOR PIPES



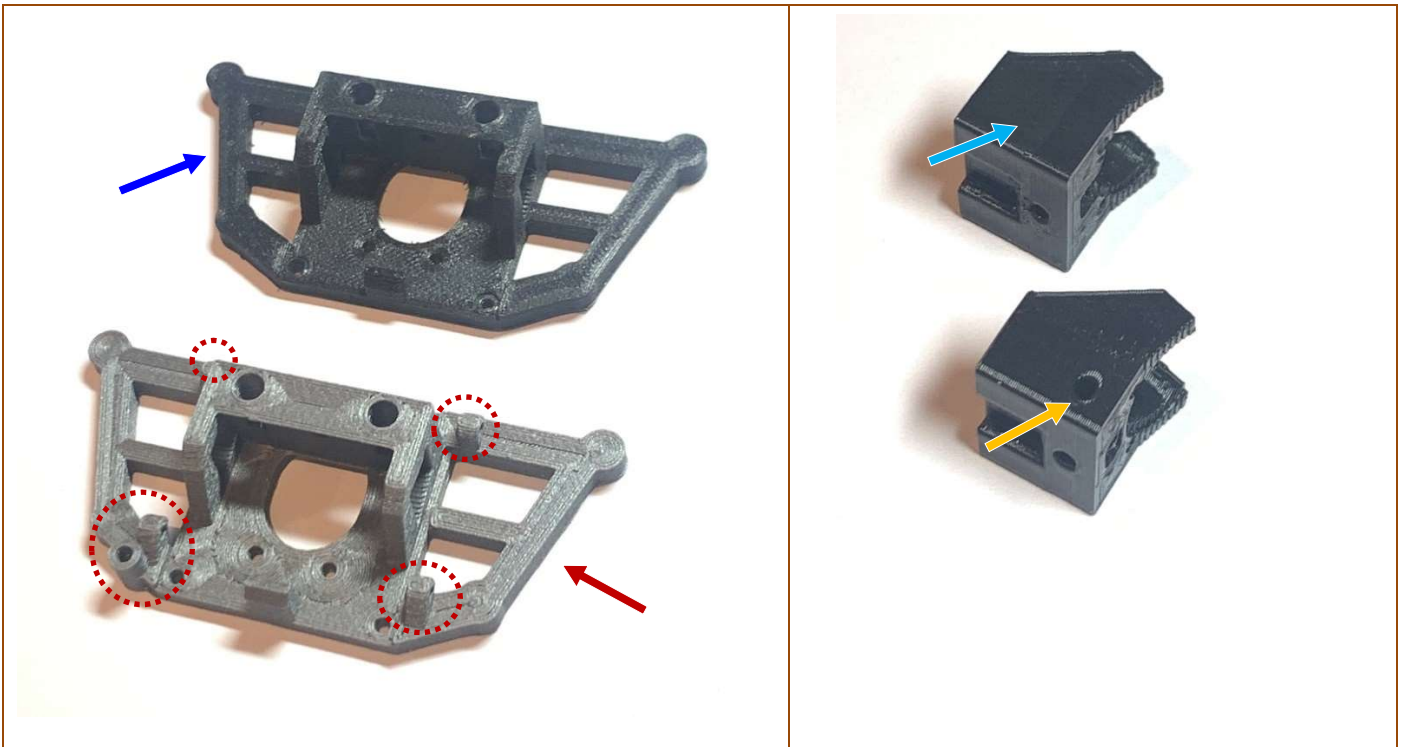
- ⚠ Note the grub screw position numbering used for easy reference in the following items...
- Slide a Red Hose Spacer over the #1 position grub screw.
- Thread the Lower Right Water Pipe onto the #1 position grub screw, until it starts to seat against the Red Hose Spacer. The angle it sits at should be “downwards” but this can be easily re-adjusted during later installation onto the car.
- ⚠ Note the “slightly shorter end” from the bend.
- Slide the Black Hose Spacer (small) over the #2 position grub screw.
- Thread the Small Tank Water Pipe onto the #2 position grub screw, until it starts to seat against the Black Hose Spacer. The angle it sits at should be “flat” with the bend in the hose pointing inwards (and not up nor downwards). As per previous pipe, this can be easily re-adjusted during later installation to the car.
- Lay the Main Water Pipe – Front Section with the “flat” surface facing downwards, and then as shown thread an M2 grub screw x10mm half way in.
- Slide a Red Hose Spacer over the #3 position grub screw.
- ⚠ Note the Main Water Pipe – Front Section must pass under the previous Small Tank Water Pipe.
- Thread the Main Water Pipe – Front Section (other end without the inserted grub screw) onto the #3 position grub screw, until it starts to seat against the Red Hose Spacer. The angle it sits at should be approximately “flat” but again this can be re-adjusted during later Body/Main Water Pipe fitment.

STEP 4 – RADIATOR MOUNTING FRAME



- ⚠ If needed, you can slightly widen the opening of the 2x small holes in each of the already installed Radiator Mount Brackets with a scalpel. This helps the M1.6 screws bite easier in the following items.
- Note the curved gusset positioning for the Radiator Support Z-frame, these parts are symmetrical left to right however we suggest the flatter print bed side can face inwards.
- Also note the correct positioning around the previously installed Main Water Pipe – Front Section that passes “through” this Radiator Support Z-frame.
- Secure the Radiator Support Z-frame to the left side of the Radiator assembly with 2x M1.6 button head bolts x4mm. Only screw these in enough so that the Radiator Support Z-frame can “just” freely rotate.
- Secure the Radiator Support Z-frame to the right side of the Radiator assembly with 2x M1.6 button head bolts x4mm. Only screw these in enough so that the Radiator Support Z-frame can “just” freely rotate.
- Thread an M2 grub screw x10mm half way into the exposed end of the previously installed Lower Right Water Pipe.

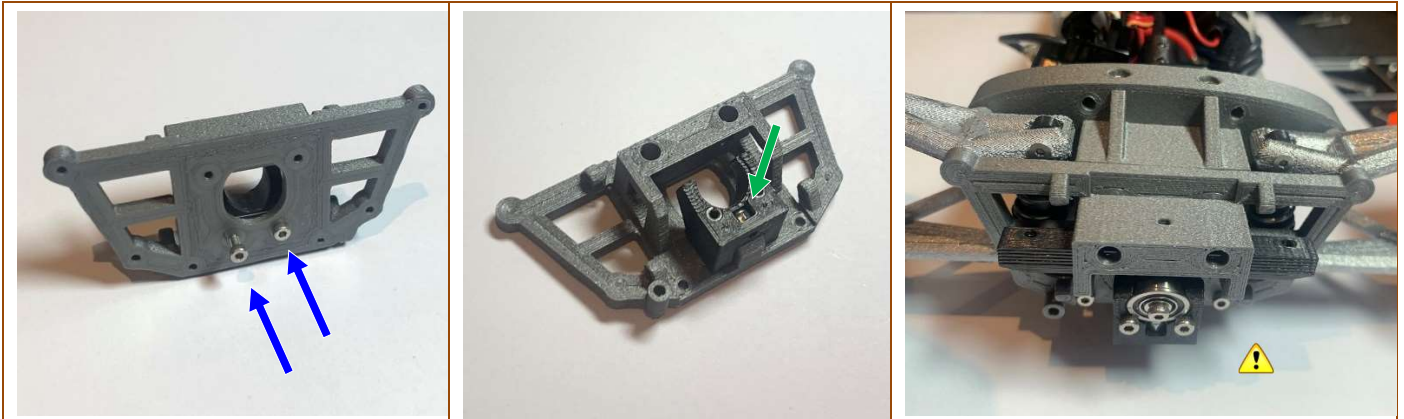
STEP 5 - FRONT BULKHEAD PLATE - PREPARING THE COMPONENTS



i For the following steps, please prepare:

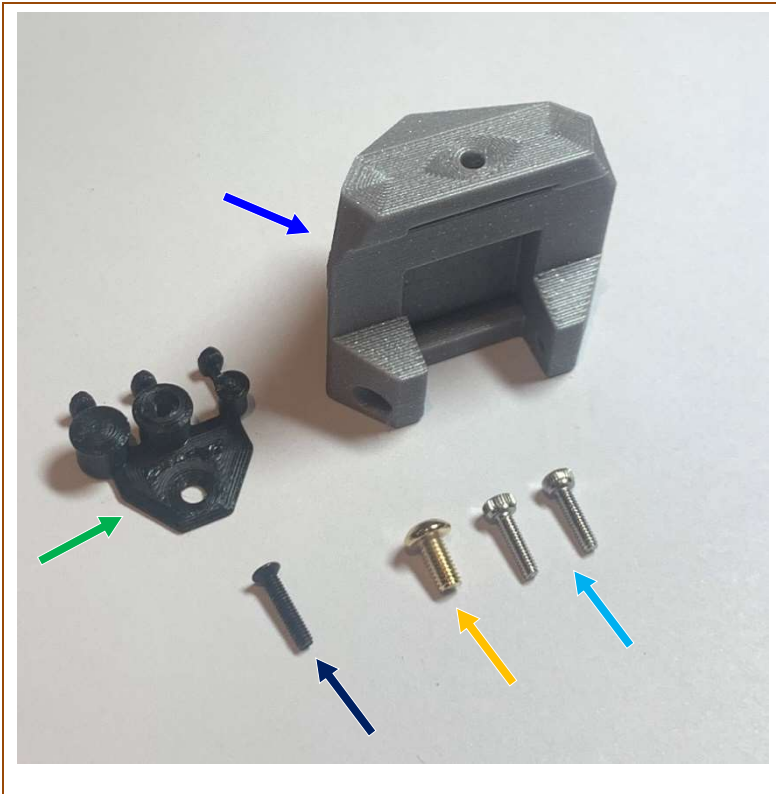
- Original: Type-L Front Bulkhead Plate → to be swapped out for new version...
- New version: Type-L Front Bulkhead Plate → note: the additional mount tabs
- Original: Type-L Front Bulkhead Plate Support → to be swapped out for new version...
- New version: Type-L Front Bulkhead Plate Support → note: the additional side holes

STEP 6 – FRONT BULKHEAD PLATE – SWAP



- Secure the new version Front Bulkhead Plate Support with the M2 hex head bolts x8mm.
- A new M2 nylock nut is included as this can be tricky to remove sometimes!
- ⚠ Install the new version Front Bulkhead Plate assembly back onto your Type-L model as per original assembly manual: SECTION 3 Front Suspension - STEPS 6→12.

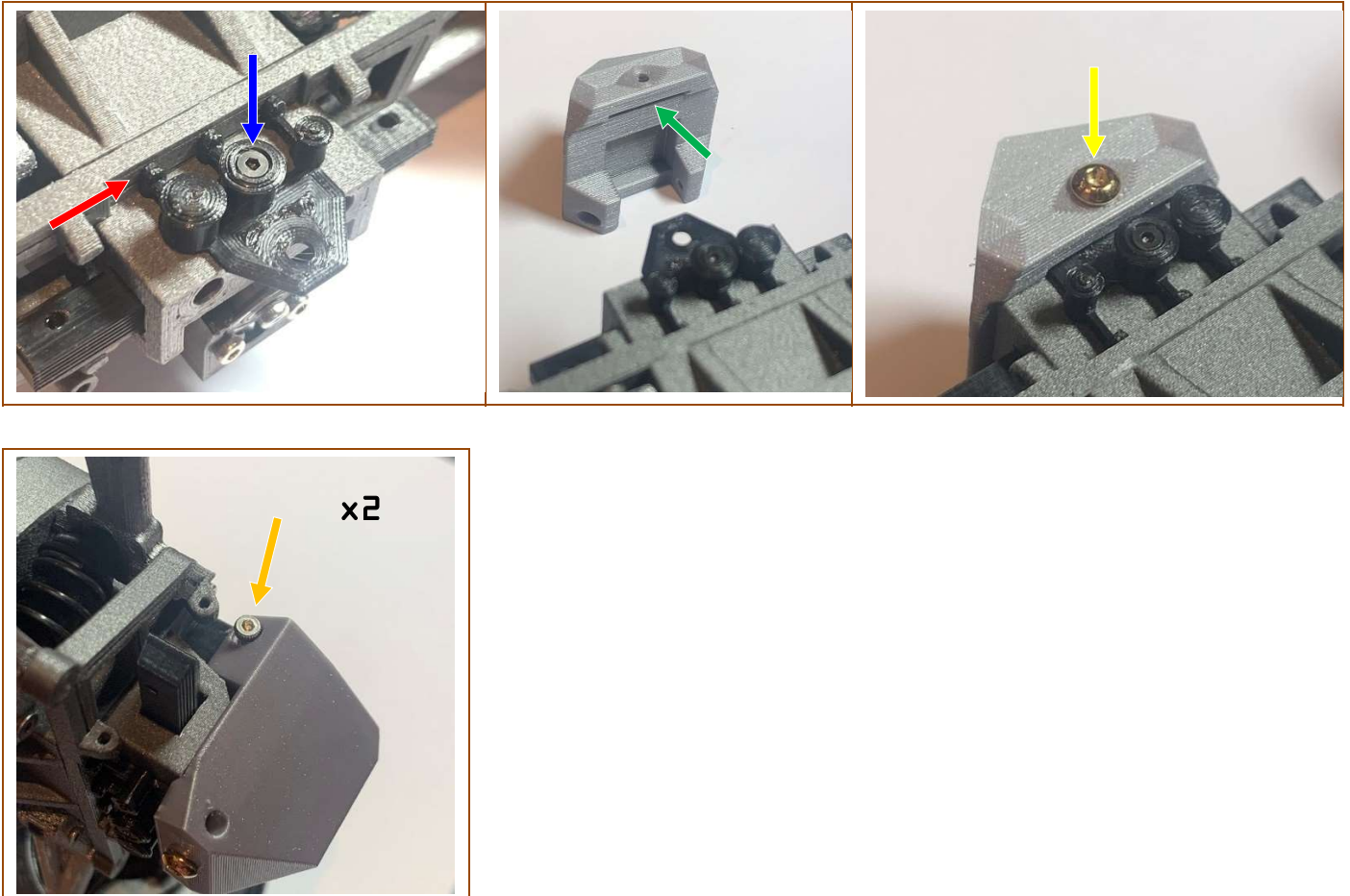
STEP 7 – WATER TANK - PREPARING THE COMPONENTS



i For the following steps, please prepare:

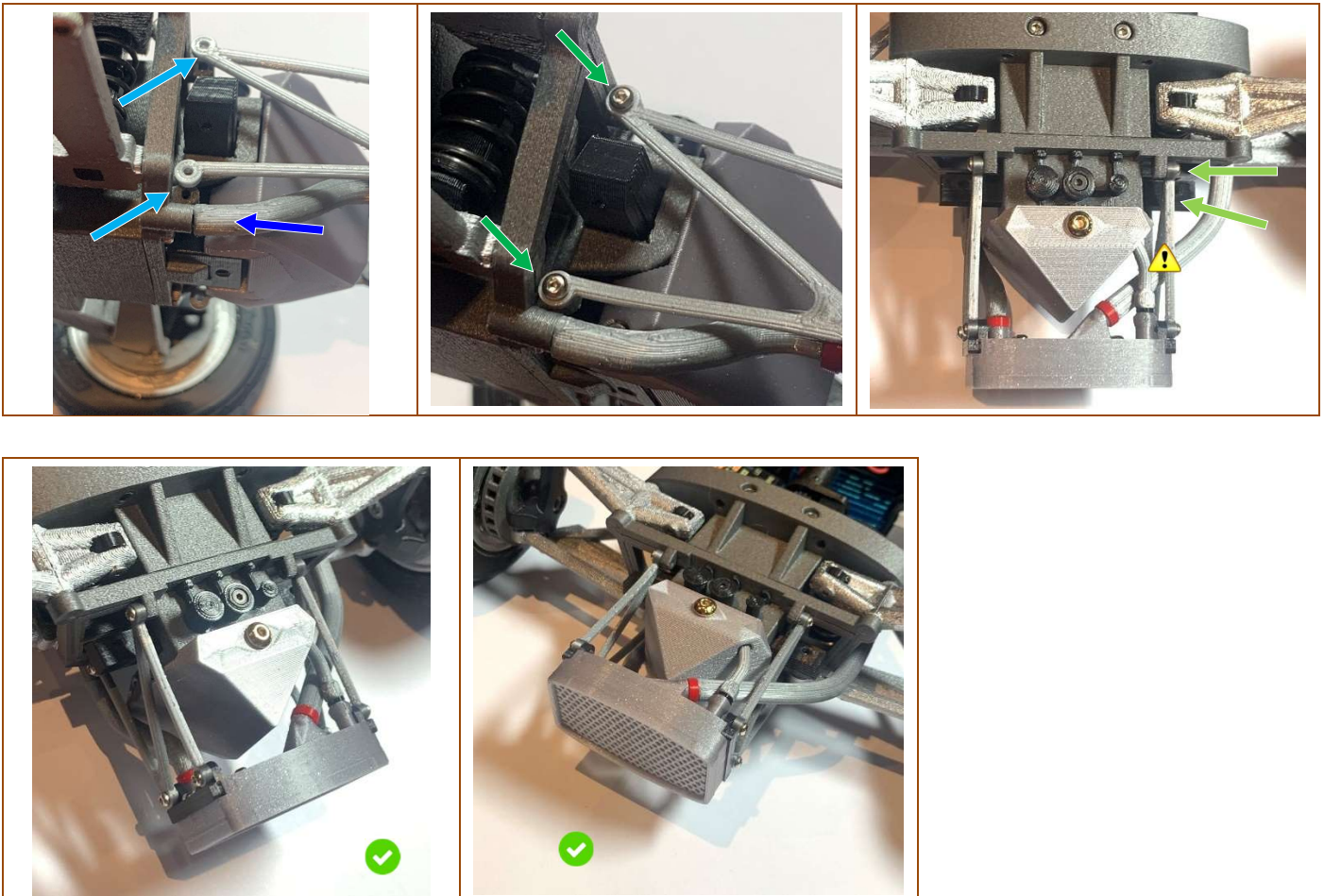
- Water Tank (1x)
- Fluid Bottles (1x)
- M2 hex head bolt x8mm (2x)
- M2cs hex bolt x10mm (1x)
- M3 button head bolt x6mm - gold (1x)

STEP 8 – WATER TANK



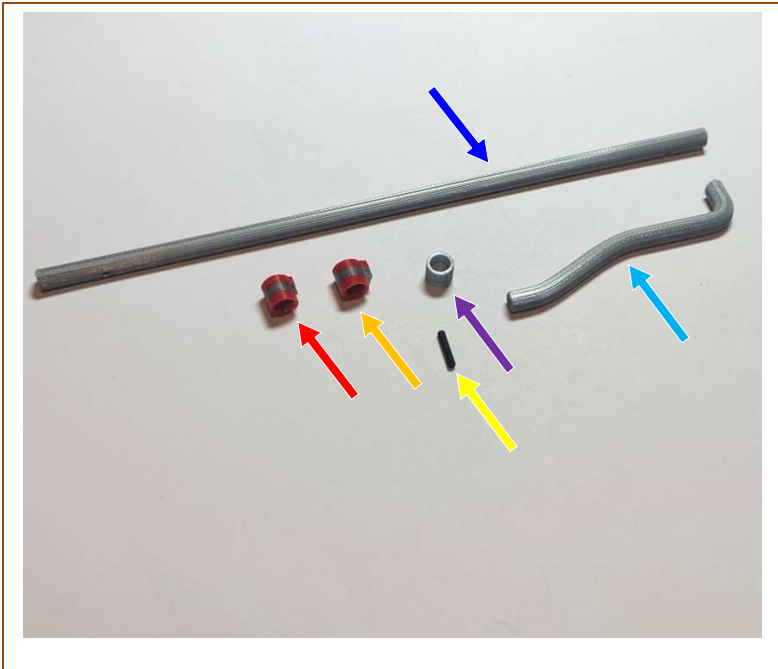
- Secure the Fluid Bottles part onto the Front Bulkhead Plate using the M2cs hex bolt x10mm.
- Carefully sand/trim the ends of the protruding pipes if required, as they press up against the Bulkhead Plate.
- Slide the Water Tank slot onto the protruding tongue of the Fluid Bottles part all the way until the Water Tank just rests against the front of the Front Bulkhead Plate.
- Secure the top of the Water Tank with the M3 button head bolt x6mm – Gold.
- Secure the bottom left side of the Water Tank with the M2 hex head bolts x8mm. Repeat for right side.

STEP 9 – INSTALL RADIATOR ASSEMBLY



- Exciting bit! Bring the Radiator assembly into position at the front of the car and guide the protruding M2 grub screw from the end of the Lower Right Water Pipe into the raised hole on the Front Bulkhead Plate – noting this purely acts as a locating pin and you do not need to thread it in.
- Still on the car's right-hand side, position the ends of the Radiator Support Z-frame eyelets over the outside of the corresponding tabs of the Front Bulkhead Plate.
- Then secure those Radiator Support Z-frame eyelets to the Front Bulkhead Plate tabs with M1.6 button head bolts x4mm. Leave these slightly loose as per their attachment to the Radiator in earlier STEP 3.
- ⚠ Before securing the Left side, ensure the Small Tank Water Pipe is inserted into the corresponding hole in the upper left side of the Water Tank (if this item is missed, the pipe part is flexible and can therefore be bent and inserted later anyway).
- As per right side above, secure the left side Radiator Support Z-frame eyelets to the Front Bulkhead Plate tabs with M1.6 button head bolts x4mm, leaving these slightly loose as previously noted.
- ✅ Check your assembly is matching the pictures. Note: that the whole assembly is flexi-mounted so that it will not break during an impact and simply flexes instead.

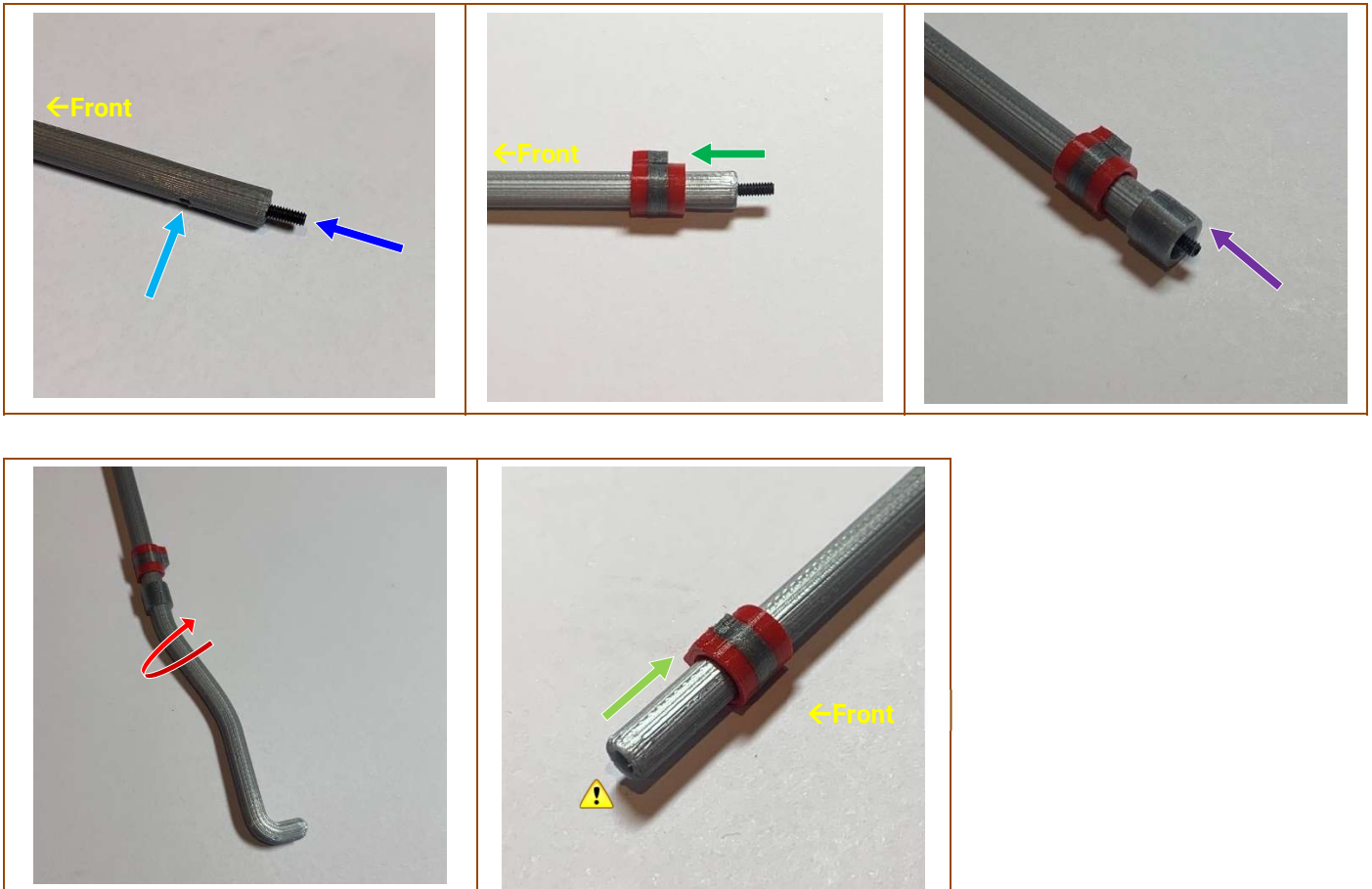
STEP 10 – MAIN WATER PIPE - PREPARING THE COMPONENTS



i For the following steps, please prepare:

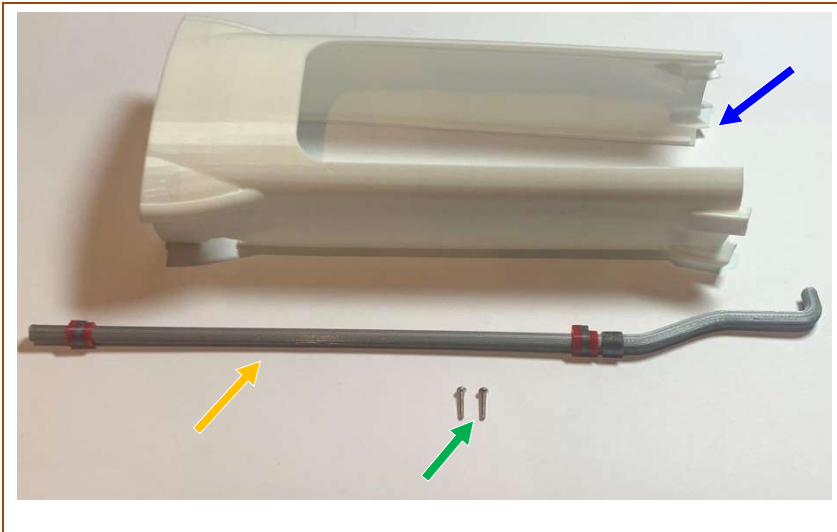
- Main Water Pipe (1x)
- Rear Water Pipe Section (1x)
- Front Water Pipe Mount (1x) (note: the “thinner” square section)
- Rear Water Pipe Mount (1x) (note: the “thicker” square section)
- Water Pipe Joiner (1x)
- M2 grub screw x10mm (1x)

STEP 11 – MAIN WATER PIPE ASSEMBLY






- The Main Water Pipe has a front and rear orientation! The front end has the larger hole and rear end has the smaller hole that you thread an M2 grub screw in approximately half way.
- Note: The Main Water Pipe has a flat surface from the print bed that is best facing downwards with this mounting hole horizontal. This way the pipe installation looks better from “above”.
- From this same rear end, slide the Rear Water Pipe Mount over the Main Water Pipe – taking special note of the square protrusion is both the “thicker” of the two similar parts and it’s oriented towards the front. In a future STEP we will align this with the rearward horizontal hole in the Main Water Pipe but approximate positioning for now is fine.
- Push the Water Pipe Joiner over the rear of the Main Water Pipe, this will be a tight fit and only needs to slide on ~2mm and will be clamped in the next item...
- Attach the Rear Water Pipe Section by rotating it onto the protruding M2 grub screw until it squeezes firmly inside the Water Pipe Joiner. Note: Final position, with the Main Water Pipe flat surface downwards, should have the Rear Water Pipe Section bend horizontal as shown.
- Moving to the front end, slide the Front Water Pipe Mount over the Main Water Pipe – taking special note of the square protrusion is both the “thinner” of the two similar parts and it’s also oriented towards the front. In a future STEP we will align this with the forward horizontal hole in the Main Water Pipe but approximate positioning for now is fine.
- ⚠ Note the larger hole in front end. This locates over the corresponding grub screw “pin” in the Main Water Pipe – Front Section → each time you install the Main Body onto the car.

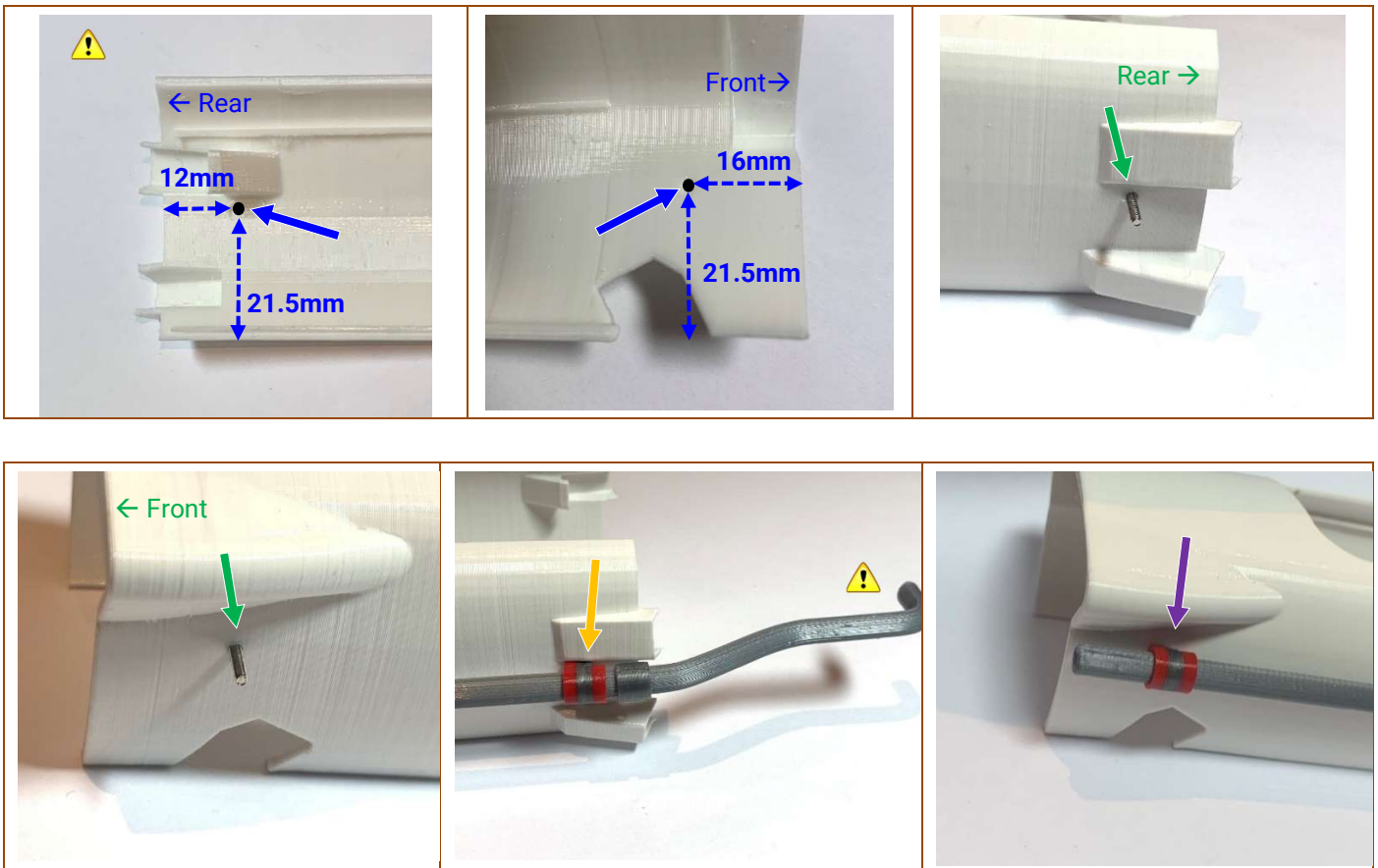
STEP 12 – WATER PIPE MOUNT TO BODY - PREPARING THE COMPONENTS



 For the following steps, please prepare:

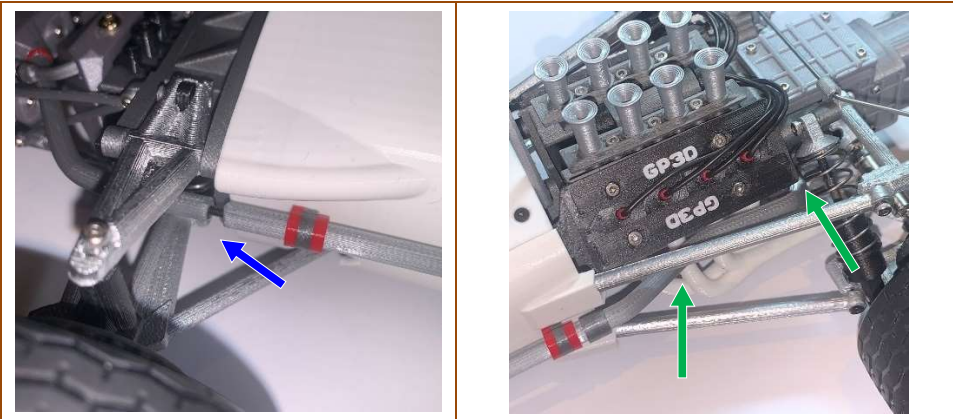
-  Type-L Main Body (1x) (from your Type-L kit)**
-  Main Water Pipe assembly (1x)**
-  M1.6 button head bolt x8mm (2x)**

STEP 13 – PREPARING THE BODY



- ⚠ Newer Type-L bodies have two small indented dimples on the inside of the left side of the body where you drill through to make the Water Pipe mounting holes. However, if you have an earlier body without the indents, please use the measurements indicated in the first two pics to position the two holes.
- We are ONLY making holes in the LEFT side of the Body! If your existing Body component doesn't have the indented markers, use the measurements depicted to mark the correct positions. Then double check the pictures again and the overall layout of the Main Water Pipe running down the side of Left side of the car before finally drilling. Drill out the two holes with the 1.5mm drill bit.
- Push the M1.6 button head bolts x8mm through the holes from the INSIDE of the Body. Repeat for Front and Rear holes.
- ⚠ Ensure the positioning of the Main Water Pipe assembly is correct, the Rear Section should be horizontal and pointing inwards (that will eventually rest against the side of the motor bay/upper exhaust area and nestle into the side of the Motor Plate once you put the Body back onto the car.
- Bring the Rear Water Pipe Mount into alignment with the rear protruding M1.6 button head bolt x8mm and slowly start threading it into the Rear Water Pipe Mount ENSURING that the corresponding hole in the actual Main Water Pipe also lines up and the M1.6 threads into that hole also. You may need to back out and reposition the Main Water Pipe until you feel the alignment. The M1.6 will thread in quite easily, therefore if you feel high resistance, it's probably missed the hole. As soon as the gap between the Rear Water Pipe Mount and the Body disappears stop tightening.
- Repeat the same process to mount the Front of the Main Water Pipe assembly.

STEP 14 – MOUNTING WATER PIPE ASSEMBLY TO THE BODY



- As you mount the front of the Body onto the car in the normal way (or as per your best technique!) ensure that you locate the hole in the front end of the Main Water Pipe onto the protruding grub screw in the Water Pipe front section. As the Water Pipes and Body parts are all flexible it's quite easy to bend and move around and insert after mounting the body also.
- At the rear, continue to mount the Body in the normal method, but in addition ensure the rear section of the Main Water Pipe travels under the top Trailing Suspension Link and then the hooked end tucks inwards at the side of Motor Plate, ensuring it's not caught on the shock absorber.

STEP 15 – RADIATOR / WATER TANK / PIPES - COMPLETED



- ✔ Ensure your assembly matches the pictures.
That's it you're done.
Enjoy the extra details and scale fusion of your upgraded Type-L model!