

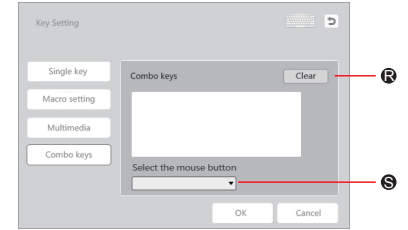
DELUX



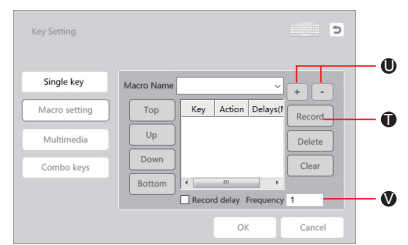
DESIGNER

MANUAL

7. Combo keys: click "Clear setting" and type the keys you need if you want to change the combo. You can also click to add mouse function in the combo.



8. Macro: Click "Record" and add action on the window, click + or - to add new action or delete action. Pressing one button can make things happen without having to type the full instructions. Record delay and record cycles can be set. More practical and interesting functions are waiting for you to explore.

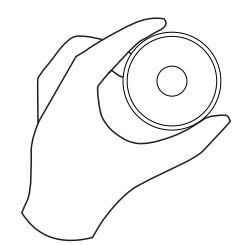


9. Multimedia: Click "Multimedia" to set multimedia function for certain keys.

Backlight mode
 Fn+M1: White backlight on all keys
 Fn+M2: Breathing backlight
 Fn+M3: Single key backlight

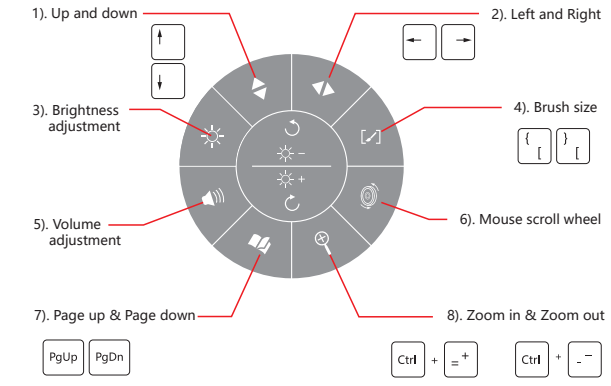
Specification of Dial

1. Dial: Pressing the middle button of dial for 1 second or click the middle button of dial on the driver to activate knob functional setting interface (can only be activated after the driver is installed). Interface will show up in the lower right corner, can be moved by mouse, clicking the center of interface and dragging. You can select the function by rotating the dial or clicking by mouse.



2. After choosing the function by rotating the dial, pressing the middle button of the dial or pressing "Enter" on keypad to confirm (If choosing function by clicking mouse, no further action is required). Pressing the middle button again, you can reselect function.

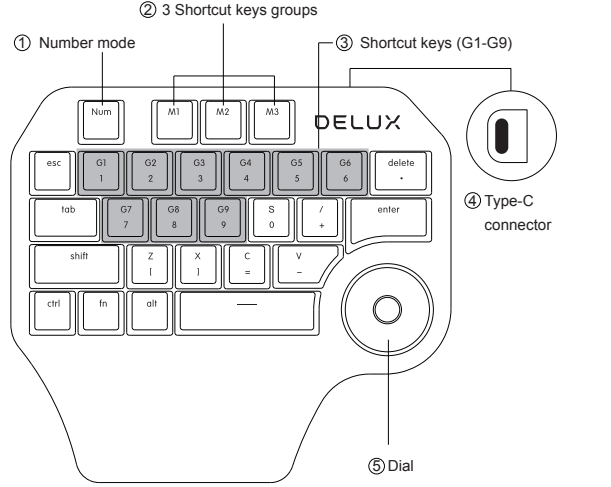
3. Dial function



Compatibility: Windows 7 / 8 / 10 / MAC OS

Thank you for choosing DELUX product, please read the manual carefully before using it.

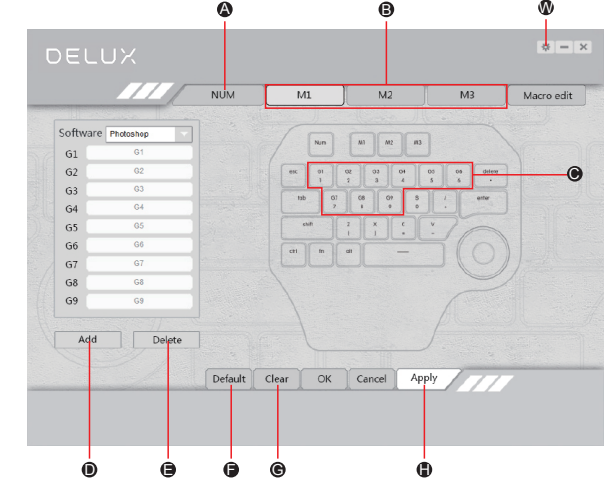
Introduction
 DESIGNER is a compact single-handed keypad. Born for designers. 3 customizable shortcut key groups are available (M1, M2, M3), each group has 9 shortcut keys (G1-G9). After setting, pressing one button can make things happen without having to type the full instructions. Multi-functional dial has functions like turn up and down, turn left and right, zoom in, zoom out, page up, page down, volume adjustment, brightness adjustment, etc.



- ① Number mode: Pressing Num to enter number mode, the backlight of Num will be on, 1-0 number buttons are available.
- ② Shortcut key mode: Pressing M1 to enter M1 mode, the backlight of M1 will be on, M1, M2, M3 mode can be switched freely.
- ③ G1-G9: Pressing one button can make things happen without having to type the full instructions.

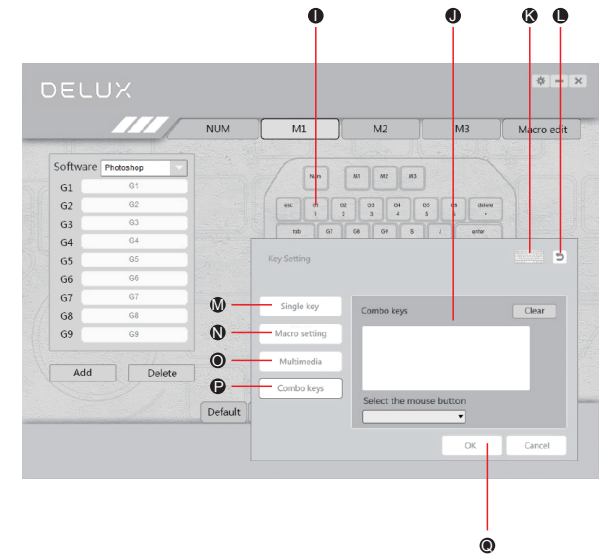
- ④ Type-C: A USB/ Type-c cable to connect Designer to computer.
- ⑤ Dial: Pressing the middle of dial for 1 second to activate dial setting operation interface.

Driver
 Visit <http://www.deluxworld.com> to download the driver and set the functions. Clicking you can save the setup as a file, and you can import it later.



- 1. Under NUM mode, if there is no customized settings for G1-G9, default function please refer to the characters (numbers and symbol) in the second row. Pressing G1/1 button, 1 comes out, press G2/2 button, 2 comes out, etc. NUM, M1, M2, M3 mode can be switched freely.
- 2. There are preset shortcut keys for different design software in the driver. You can edit and delete presetting, also can add new software settings by clicking "Add".

- 3. Click "Apply" to activate the setting. Under any mode, click "Clear settings" to clear all the setting and "Default" to restore to factory settings.
- 4. Customizable keys: G1-G9, Delete, S, /, Z, X, C, V, click these keys, the setting window will show up.



- 5. About Key settings, you can set Single key, Macro setting, Multimedia and Combo keys. Click or Fn + Ctrl to activate soft keyboard. Click any key on the soft keyboard, it will show up in the blank space. Note: Soft keyboard function can only be used under Windows system, not suitable for MAC OS.
- 6. If you need to reset, Click to set again, and after finishing the setting, click to close the window and you can move on to the next button's setting.