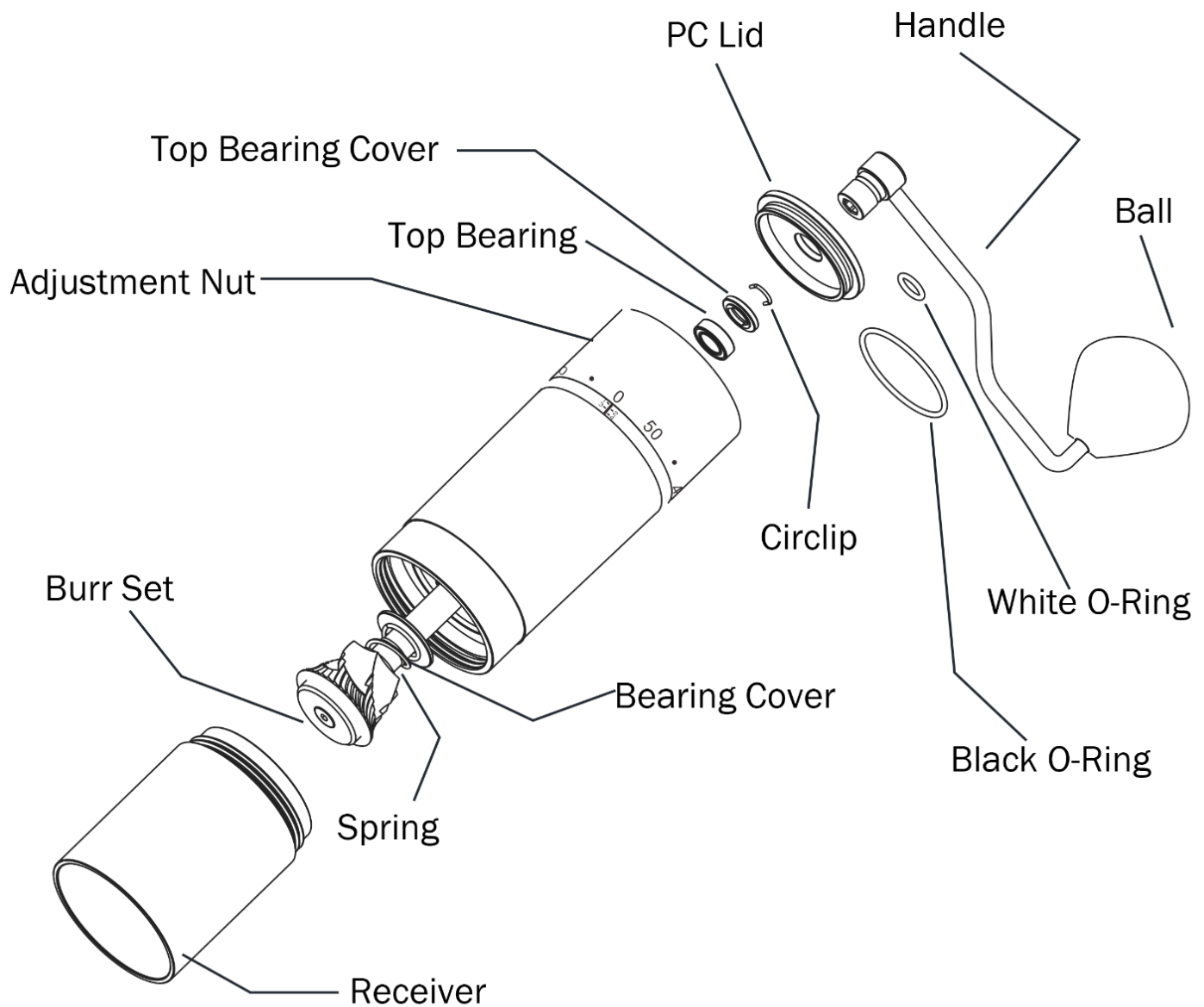


# KIN®Grinder



# KINGrinder Manual

## Exterior Adjustment of K4 and K6 Hand Coffee Grinder

### How to operate the grinder?

1. Rotate the **adjustment nut** for the desired grind setting.
2. Take out the **handle** and **PC lid**, load 30~35g of coffee beans into it.
3. Put on the **handle** and **PC lid** then spin the handle clockwise till it has done.

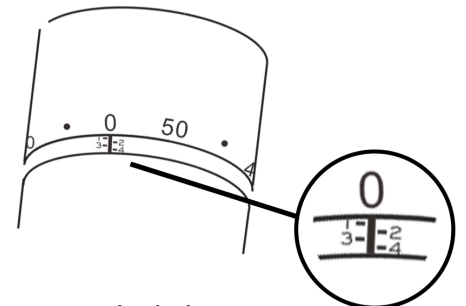
### How to install the PC lid? (There are method A and method B)

**A.** Default setting: the **PC lid** and **handle** are separate-able for grinding (drill-grinding is applicable).

**B.** Attach the **PC lid** and **handle**:  
Take out the **Black O-ring** -  
Place the **White O-ring** into the groove.

### How to adjust the grind setting?

1. Gently rotate the **adjustment nut** *clockwise* to zero. The corresponding number is zero and the number on the **adjustment nut** may not be the same as the number of clicks from the grind setting.
2. Rotate the **adjustment nut** *anti-clockwise* from zero to your grind size.
3. Rotate the **adjustment nut** *anti-clockwise* for a coarser grind and vice versa.



	K4	K6
Extra Fine	15~50	15~25
Fine	50~60	25~60
Medium-Fine	60~90	
Medium	90~120	
Coarse	150	

### **How to disassemble the grinder?**

1. Rotate the **adjustment nut** *anti-clockwise* for a coarser grind before dismantling the grinder.
2. Hold down the **burr set** with a hand and remove the **circlip** with another hand.
3. Take out the components in order. The **burr set** (attached with the central shaft), the **bearing cover** and the **spring** from the **burr set**. Then the **top bearing cover** and the **top bearing** from the above.

### **How to assemble the grinder?**

1. Put on the components in order. The **spring** and the **bearing cover** and then put the **burr set** back to the grinder.
2. Hold down the **burr set** with a hand and put on the **top bearing** and the **top bearing cover**. There are two shapes of the **top bearing cover**: flat design and curve design. The curve design shape of the **top bearing cover** faces upward.
3. Slide the **circlip** onto the curve design shape of the **top bearing cover** with another hand.

### **What's to do and not to do?**

- Cleansing with a brush.
- Don't wash the grinder with water.
- Don't disassemble the **burr set unit** and the **adjustment nut**.
- Don't rotate the **adjustment nut** when the grinder is on zero setting.

@: [hello@kingrinder.com](mailto:hello@kingrinder.com)

Website: [www.kingrinder.com](http://www.kingrinder.com)

Instagram: [KINGrinder](https://www.instagram.com/KINGrinder)

Linktree: [KINGrinder](https://www.kingrinder.com)

# **KING** **Grinder**