



*Indique*  
VIRGIN HAIR EXTENSIONS

# PURE WAVY LACE FRONT WIG

Measurement Guide

## How to measure your head for the Lace Front Wig:

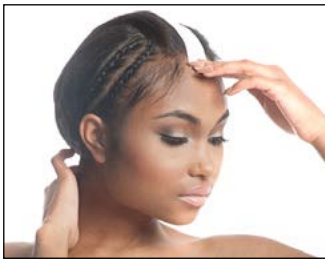
- Use our Indique measuring system to select your size! When fitting for an Indique Lace Front Wig, a few measurements should be taken into consideration. Use measuring tape or download our [Indique Ruler](#). In order to get the most accurate dimensions, measurements should be taken with your natural hair either braided or in a flat wrap. The presence of an existing install will give inaccurate results.

### Measure the circumference and diameter of your head:



#### Circumference

From the front hairline, behind your ear, to the nape of your neck, to your other ear and then back to the front hairline



#### Diameter

From hairline to nape

Lace Front Wig should fit circumferences ranging from 21-23", and a diameter up to 13".

### PURE Lace Front Wig Specifications

- Circumference: 23"
- Hairline to nape/Diameter: 13"
- Ear-to-Ear (across forehead): 11.5"
- Ear-to-Ear (across the top) Hairline: 13.5"
- Temple-to temple (around back): 15"
- Nape of neck: 5"