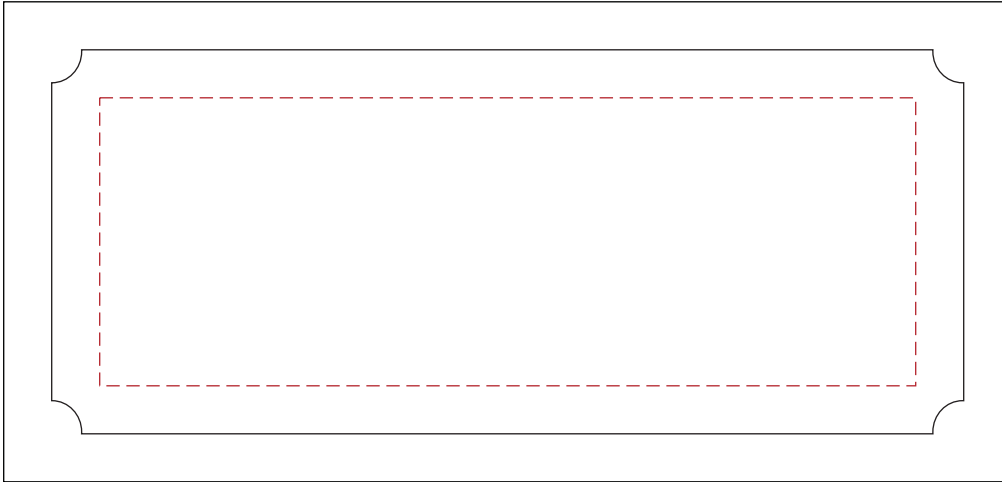


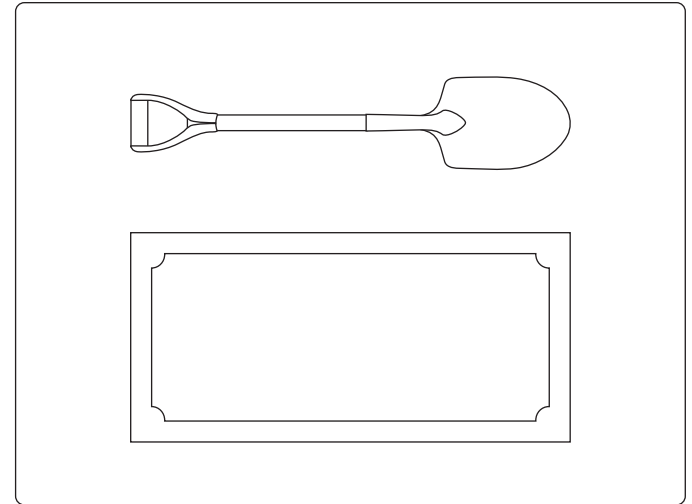
5010050PB

8"W x 6"H Shovel Plaque | Piano Finish: Black  
Mounted 5.25" Shovel: **Antique Silver** or **Antique Gold** or **Bright Gold**  
Production Proof

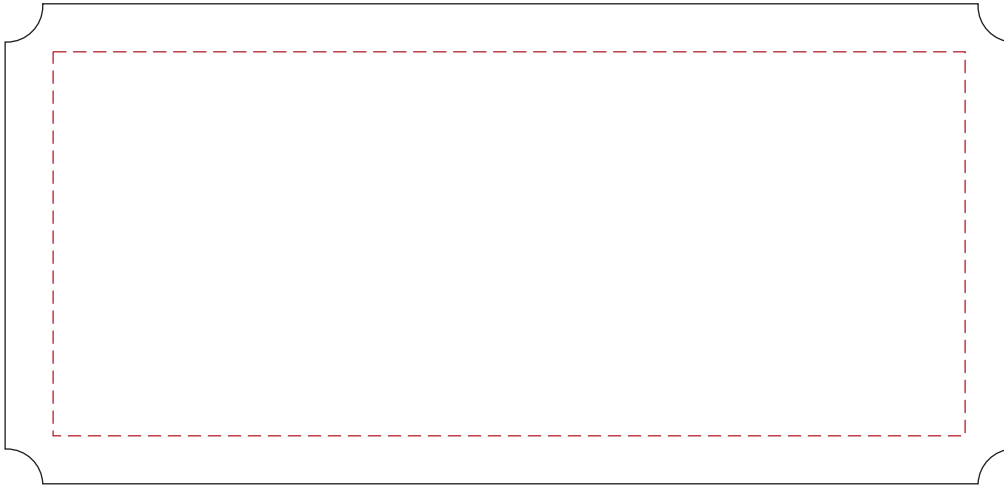


Engraving Area: 4.25"W x 1.5"H

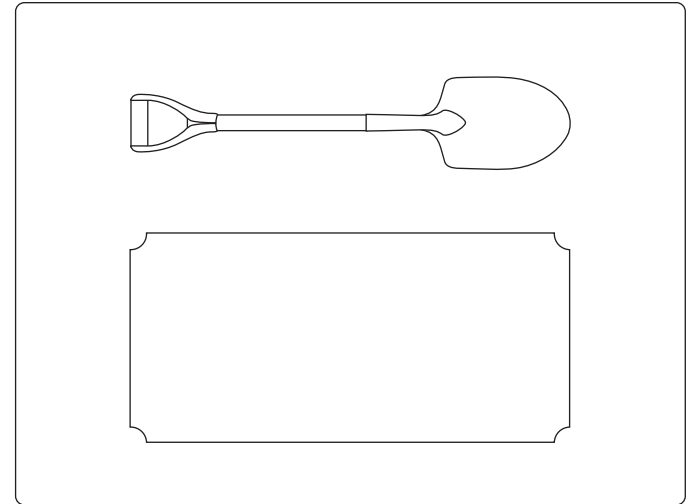
Laser Engraved - 4.75"W x 2"H Black **Brass/Aluminum** Plate over  
5.25"W x 2.5"H Bright **Gold/Silver** Plate



**5010050PB**  
**8"W x 6"H Shovel Plaque | Piano Finish: Black**  
**Mounted 5.25" Shovel: **Antique Silver** or **Antique Gold** or **Bright Gold****  
**Production Proof**



Imprint Area: 4.75"W x 2"H



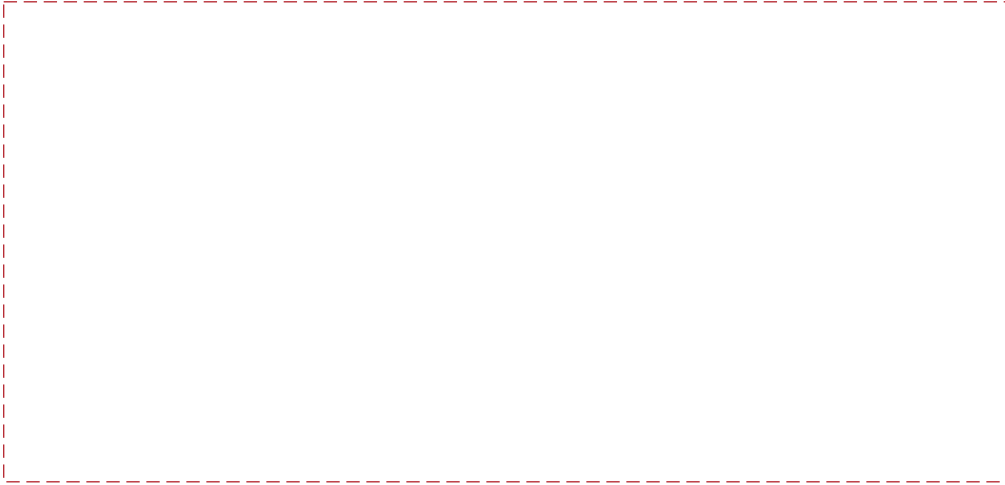
Full Color Direct Printed - 5.25"H x 2.5"W Brushed **Gold/Silver** Plate



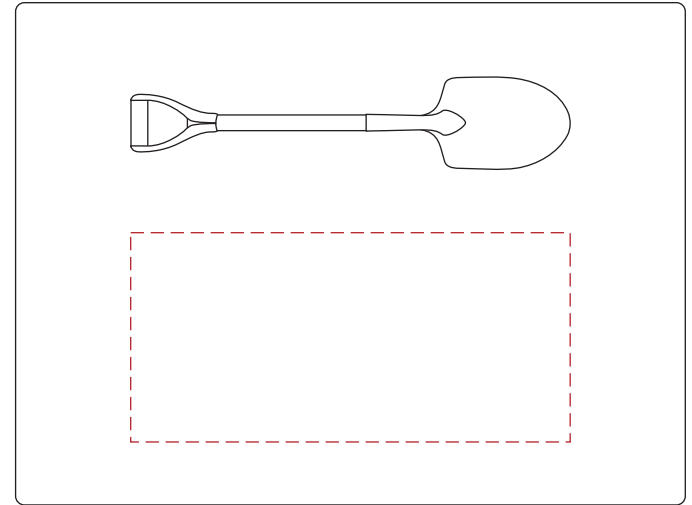
**5010050PB**

**8"W x 6"H Shovel Plaque | Piano Finish: Black**

**Mounted 5.25" Shovel: **Antique Silver** or **Antique Gold** or **Bright Gold****  
**Production Proof**



Engraving Area: 5.25"W x 2.5"H

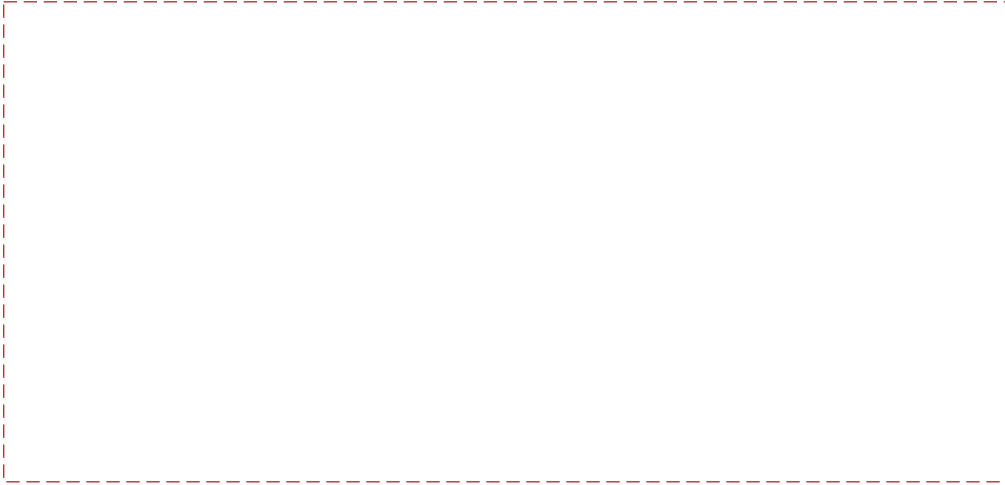


**Laser Engraved - Plaque with **Gold/Silver** Color Fill**

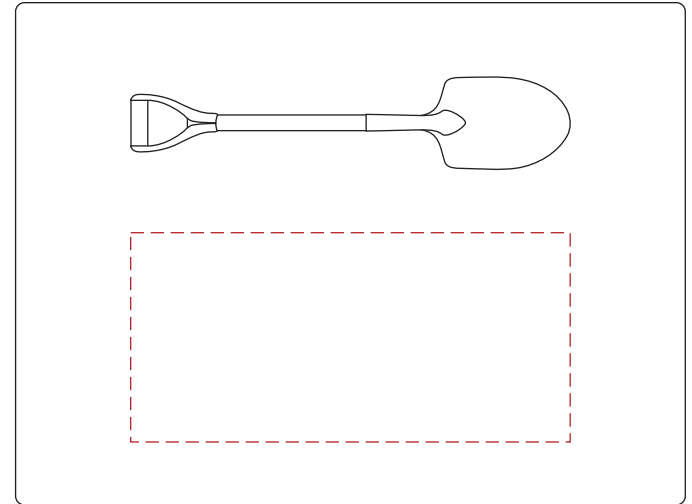
**5010050PB**

**8"W x 6"H Shovel Plaque | Piano Finish: Black**

**Mounted 5.25" Shovel: **Antique Silver** or **Antique Gold** or **Bright Gold****  
**Production Proof**



Imprint Area: 5.25"W x 2.5"H



**Full Color Direct Printed - Plaque**

