



**PRODUCTION PROOF**

Item: 5010047 - 10.5"W x 13"H  
Walnut Ceremonial Shovel Plaque  
[www.EAGawards.com](http://www.EAGawards.com)

**Laser Engraved Plate**  
**8"W x 5"H Black Brass Plate over**  
**8.5"W x 5.5"H Bright Gold Plate**

X \_\_\_\_\_

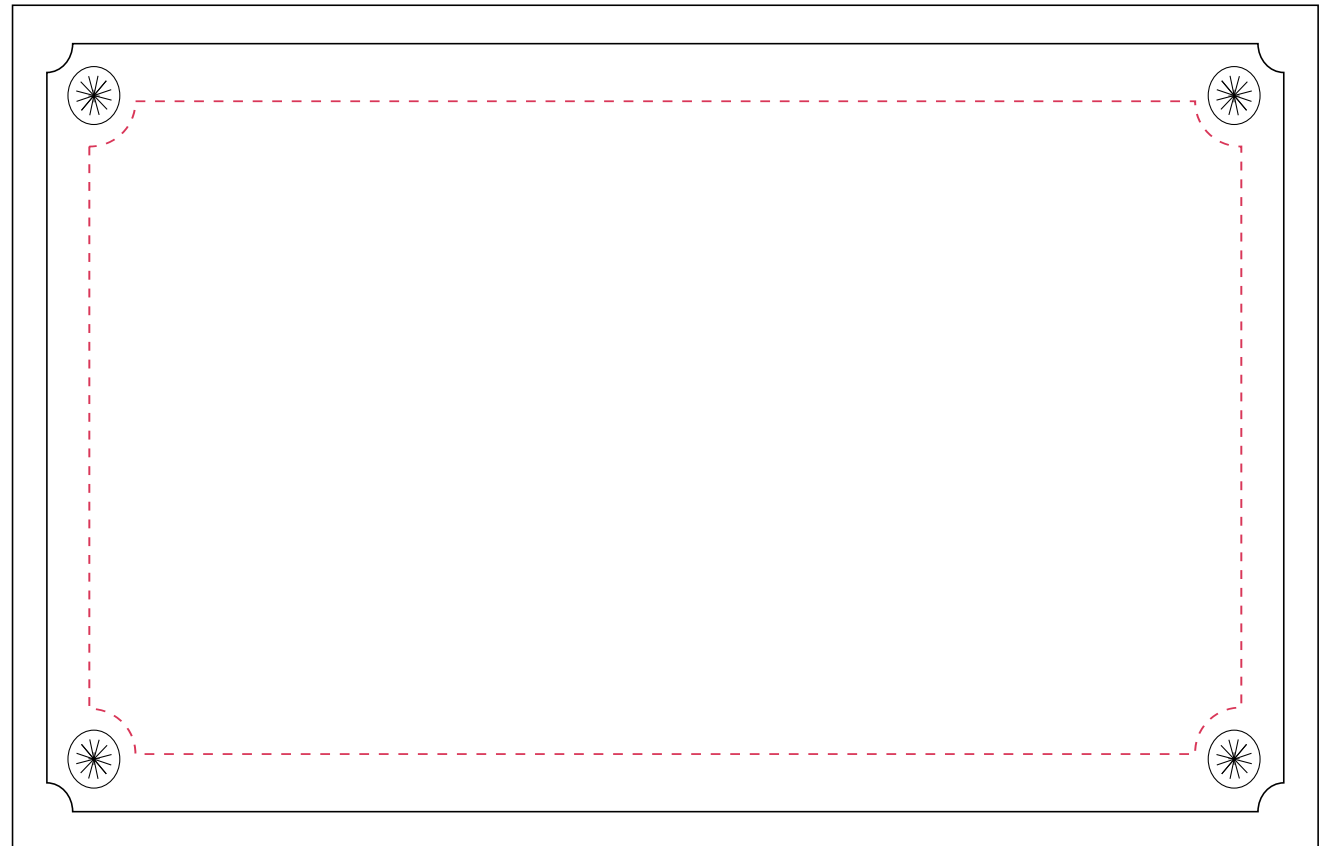
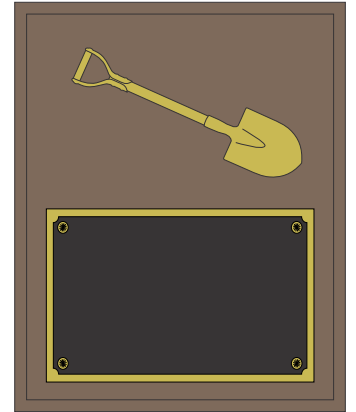
Date \_\_\_\_\_

*Signature and date required -*

*By signing, customer acknowledges this is the final Production Proof and customer has read the accompanying Proof Approval Form, specifically regarding shared responsibility of remake costs in the event of errors.*

Artwork E-Mail Stamp

Artwork Approval Stamp



**Engraving Area: 7.5"W x 4.25"H**  
**Shown at 80%**



**PRODUCTION PROOF**

Item: 5010047 - 10.5"W x 13"H  
Walnut Ceremonial Shovel Plaque  
[www.EAGawards.com](http://www.EAGawards.com)

**Full Color Printed  
8.5"W x 5.5"H Brushed Gold Plate**

X \_\_\_\_\_

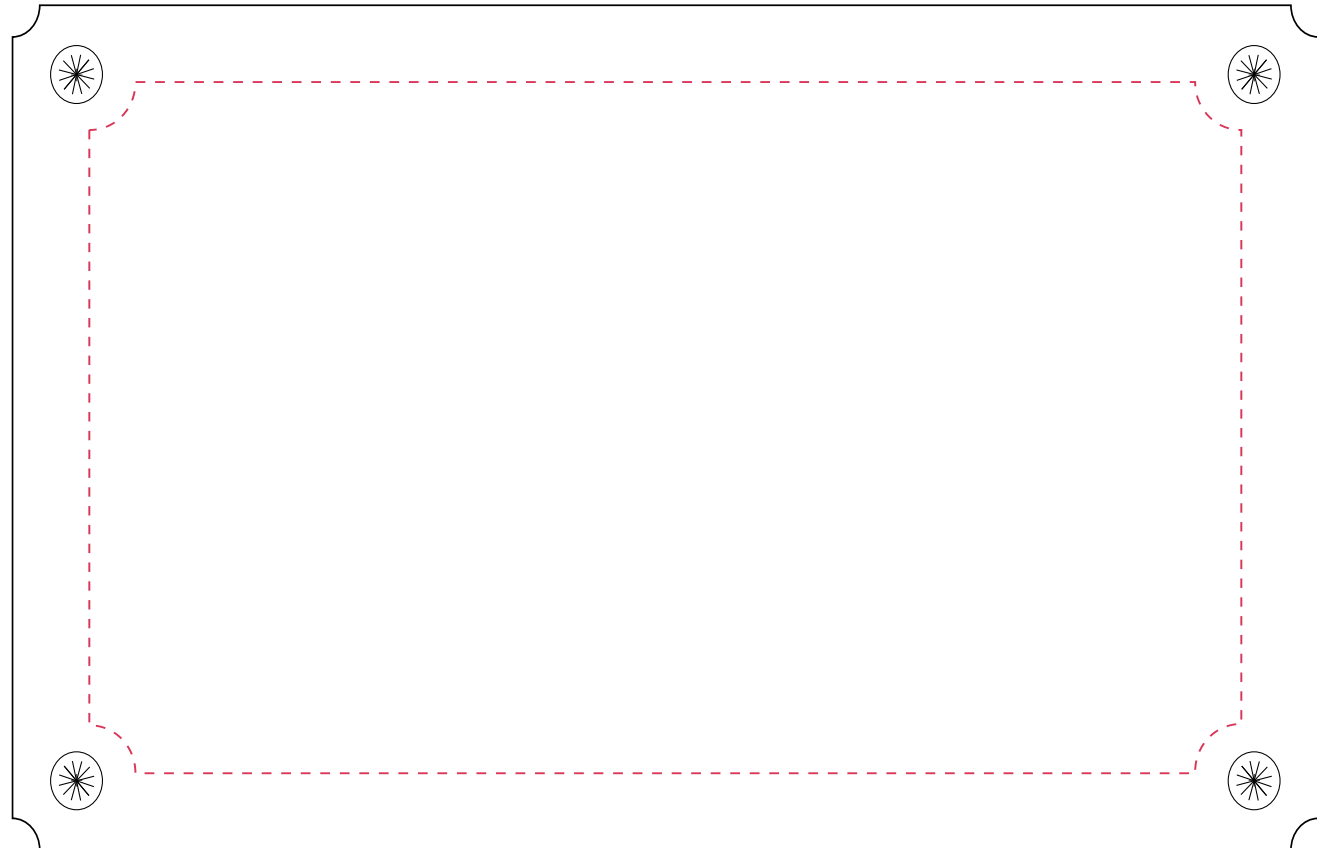
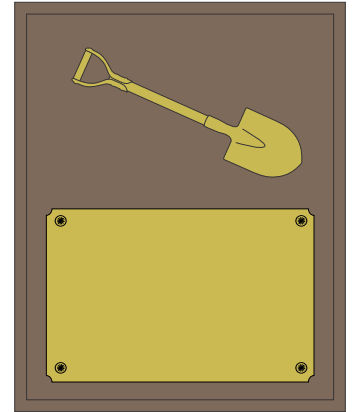
Date \_\_\_\_\_

*Signature and date required -*

*By signing, customer acknowledges this is the final Production Proof and customer has read the accompanying Proof Approval Form, specifically regarding shared responsibility of remake costs in the event of errors.*

Artwork E-Mail Stamp

Artwork Approval Stamp



**Engraving Area: 7.5"W x 4.5"H  
Shown at 80%**