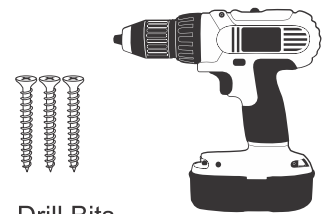




# 45" x 10.5" Full Size Ceremonial Shovel Plaque Assembly Instructions

## Tools Needed

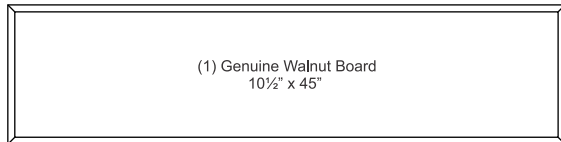


Drill Bits

9/64"

#2 Phillips Head

## Included Parts



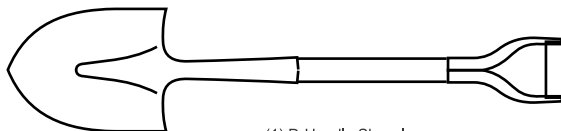
(1) Genuine Walnut Board  
10½" x 45"



(1) Spade Horn

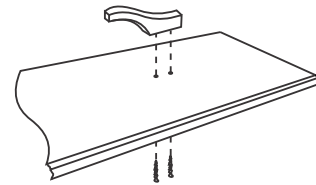


(3) 1½" Wood Screws

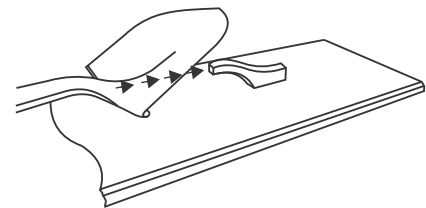


(1) D-Handle Shovel

Step 1: Attach the Spade Horn to the Walnut Board with (2) Wood Screws using the (2) pre-drilled holes.



Step 2: Slide the Shovel spade onto the Spade Horn.



Step 2: Attach the shovel handle to the Walnut Board with (1) Wood Screw using the pre-drilled hole.

