



CATHERINE
CANINO
JEWELRY



FALL 2019 LOOKBOOK

212.924.5660

Text Only 917.593.1729

caninojewelry@verizon.net

www.caninojewelry.com



ABOUT US

Catherine Canino Jewelry has been handmade with love and attention to detail in NYC, NY since 1999 by a team of artisan craftspeople. We do not maintain inventory, therefore each piece is carefully made-to-order. We ask that you keep the custom nature of our production in mind with your ordering.

- Shipping from NYC, lead time 1-14 days depending on styles
- \$500 minimum opening order (any combination of styles)
- Re-order is 2 pieces or 100.
- Customer pays FedEx Ground shipping and insurance. Typical shipping costs run \$12-26
- Damages must be photographed and emailed/text for return approval
- As we hand make to order, we happily accept custom size/length requests

PRODUCT FAQ

All styles available in our 3 hand finished metals:

- Classic, polished 14 karat gold over brass
- Warm, artisanal, matte finished 18 karat gold over brass
- 925 solid sterling silver with high polish finish

(Please note our gold plating is the industry standard of 5mils)

Post earrings feature surgical steel posts with hypoallergenic rubber ear stoppers. These stoppers come with each post earring pair, we highly suggest wearing these to avoid loss.

Earwires are crafted of the same metal as the base of the earring. 18k/Polished 14k over brass prices are the same, while sterling prices are typically higher for same styles due to the intrinsic value of 925 sterling.

PEBBLE PEARLS

These signature pebble pearls are a hand crafted composite: mother of pearl shell is crushed, formed into the pebble shape, then lacquered and polished 18 times to draw out the shell's luster and hue.

An organic material with a human touch, these shell-based pearls feature natural variances. PLEASE SEE LAST THREE PAGES OF THIS PDF FOR CURRENT COLORS.

FRESHATER PEARLS

Cultured, organically farmed freshwater pearls are hand selected by Catherine and have rich luster and hue, with a natural/irregular texture. Special color/sizing requests welcome.



LEATHER HANDBRAID

Available in black, chocolate, taupe, cream and dove grey.

SEMI PRECIOUS STONES

Hand selected by Catherine, colors added seasonally, special requests welcome.

JEWELRY CARE

We are huge believers in taking care of your jewelry :) Please do not wear in the shower, while swimming, sunbathing, during hot yoga...etc! Also watch perfumes, sprays and lotions. When not wearing, please store in our protective pouch. Metal and stones can scratch and bend. Only use a soft cloth to clean- no abrasives or cleaners.

Repairs / Damage Requests and Replacements

All requests must be submitted via email to **caninojewelry@verizon.net** along with a photo. Estimate for cost of repair will be emailed, and are at the discretion of Catherine Canino Jewelry. We are not responsible for damages due to excessive wear/abuse. Repairs can take 2-4 weeks and customers are responsible for all shipping charges.

Half pair earring replacements are available at 50% of the full pair price, customer is responsible for shipping charges. Please email photo of existing earring to **caninojewelry@verizon.net** for a price quote.



1 Large pebble and ridged bead stretchy **PB-G14**

2 Triple wrap gold bead and pearl bracelet or necklace 19" **GOLD-NECK-G14**

3 Elongated hardware with large pebbles **TUBE-G14**

4 Freshwater pearl stretchy cluster with golden tie and pearl button clasp **SALLY-G14-WHITE**

5 Medium pebble with ridged bead stretchy **MP-SB-G14**

6 Gold bead stretchy cluster with golden tie and white pearl button clasp **GOLDSALLY**



1 Elephant cord pendant with pearl button clasp 16-18" adjustable **BIG-ELEPH-CORD-G**

2 Facetted 10mm lapis with elephant charm 17" **ELEPH-G-LAPIS**

3 Small elephant cord pendant 16-18" adjustable **ELEPH-G**

4 12mm smooth lapis stretch bracelet with golden details **MP-SB-G14-LAPIS**

5 14mm smooth lapis stretch bracelet with ridged bead detail **SB-G14-LAPIS**



- 1 Stirrup and hook hardware with 14mm lapis lazuli 20" **SHPN-G14**.
- 2 Sally cluster bracelet set with gold detail in lapis and green turquoise mix **SALLY-G14-LT**.
- 3 Flower petal stretch necklace or triple wrap bracelet in white freshwater with lapis lazuli detail **FLOWERSTRETCH-G14-WT**.
- 4 Lapis lazuli stretch bracelet with elongated gold hardware details **TUBE-G14-LAPIS**.



- 1 Chunky blue quartz slab on golden chain 17" **NICOLE-G14**
- 2 Chunky blue quartz slab on cording 17" **NICOLE-CORD-G14**
- 3 Facetted blue amazonite stretchy cluster bracelet **SALLY-G14-AMAZ**
- 4 Smooth big blue quartz stretch bracelet **BIGBLUEBRAC-G14**
- 5 Soft blue quartz stretchy cluster set **SALLY-G14 SOFTBLU**



1 Big, chunky smoky quartz knotted with gold cording 17" **BIGSTONE-G14**

2 Natural agate stretchy cluster bracelet **SALLY-G14-NAT**

3 Smoky quartz stretchy cluster bracelet **SALLY-G14-SQ**

4 Elongated hardware 14mm smoky quartz stretch bracelet **TUBE-G14-SQ**

5 Cat's eye stretch bracelet with ridged bead detail **SB-G14-CE**



- 1 Sparrow chain pendant adjustable 18-24" **SPARROW-CHAIN-G**
- 2 Labradorite Sparrow necklace 10mm/ 17" **SPARROW-LAB-G**
- 3 Sparrow cord pendant 16-18" **SPARROW-CORD-G**
- 4 Labradorite cluster stretchy bracelet with gold tie and button **SALLY-G14-LAB**
- 5 14mm labradorite bracelet with elongated gold hardware **TUBE-G14-LAB**
- 6 Soft grey freshwater pearl stretchy cluster bracelet with gold tie and button clasp **SALLY-G14-GFW**



1 Green quartz teardrop chandelier neck collar **CHAND-WIRE-G14-G**

2 Large pebble pearl neck collar **PEARCOLLAR-G14**

(Chose large or small neck wire)

3 White freshwater pearl triple wrap stretchy bracelet or 19" necklace with malachite flower petal detail **FLOW-STRETCH-G14 WHITE/GREEN**

4 Big faceted green quartz stretch bracelet with elongated hardware **TUBE-G14-GRN**



1



2



3



4

1 Chandelier neck collar in smokey Swarovski crystal **CHAND-WIRE-G14-SQ**

2 Swarovski simple pendant 17" **SWP-G14**

3 Triple wrap white faceted turquoise bracelet/19" necklace with smokey Swarovski **P13-STRETCH-G14-WHT/SQ**

4 White faceted turquoise stretchy cluster bracelet with golden tie and smokey button **SALLY-G14-WHT/SQ**



- 1 Onyx teardrop chain pendant 18" **NICOLE-CHAIN-G14-ON**
- 2 Ecru cording pendant with onyx teardrop 17" **NICOLE-CORD-G14**
- 3 Matte faceted onyx stretchy cluster bracelet with golden tie and button **SALLY-G14-MO**
- 4 Matte faceted onyx stretch bracelet with elongated hardware **TUBE-G14-MO**



1

Labrodite and cording necklace **NICOLE-CORD-G14**

2

Rutilated quartz and cording necklace **NICOLE-CORD-G14-RT**

3

4 Lasso and hook double wrap bracelets in braided pewter or bronze leather **LB2-G14**



1



2



3



4



5

1 14mm smooth moonstone necklace with S hook clasp 24" LP4-G14

2 Faceted moonstone stretch necklace with slate pebble pearl detail 19" P13-STRETCH-G14-MOON

3 Faceted moonstone cluster stretchy bracelet set with golden tie and button clasp SALLY-G14-MOON

4 Faceted butter quartz cluster stretchy bracelet set with golden tie and button clasp SALLY-G14-BQ

5 Smooth 16mm moonstone stretch bracelet with elongated hardware TUBE-G14-MOON



Exotic cording with signature lasso hardware and large pebble pearl pendant 17"

1

LLN1-G14

2

LLN1-S/S 95 sterling

Cord options: grey, cappuccino, olive

Shown with steel, slate, taupe and white pebbles



- 1 Excellent quality large organic baroque freshwater pearls in grey/taupe hues handknotted with golden thread. 17" (approximately) Toggle closure. QUANTITIES LIMITED ON THESE BEAUTS! **BAROQUEBIG**
- 2 Shimmery black baroque pearl pearls, gold knotting + toggle. 18" **BAROQUE-BLACK**
- 3 Baroque pearl French wire earrings **EWP1-BG14**
- 4 Skinny sculpted post with baroque pearls **PE22-FWB-G**



- 1 Scrambled pebble mix of colors, 28" graduated **MULTI-PEBBLE**. (our choice on colors, quantities limited)
- 2 Multicolor semi precious stone stretch necklace/triple wrap bracelet with lapis flower detail **FLOWER-STRETCH-G14-MULTI**
- 3 Scrambled large pebble stretchy bracelet with elongated hardware **TUBE-MULTI-G**
- 4 Facetted semi precious stone cluster bracelet set (stretchy) with golden tie and button **SALLY-G14-MULTI**
- 5 Multiple hues Swarovski crystal knotted toggle bracelet **SWAROV-B-G14**



1

24" medium pebble lasso hook necklace **LP1-MMG14**

2

Bit necklace on braided cording with hook and pearl cabochon details 17" pictured in taupe also available in chocolate, grey and black **ELN-G14**

3

Bit bracelet with large pebble pearls, hook and pearl cabochon detail to fit 7 1/2" **EPB-G14**

4

Snaffle toggle bracelet with medium pebble pearls to fit 7 1/2" **STPB1-G14**

5

Lasso and hook large pebble pearl bracelet **LPB-G14**



- 1 Large equestrian toggle freshwater pearl necklace 20" **BRIM-G.**
- 2 Medium equestrian toggle freshwater pearl necklace 18" **EQ-G.**
- 3 Small equestrian toggle freshwater pearl necklace 17" **HORSEPEARL-G.**
- 4 Double wrap golden leather and curved equestrian clasp **EB-LG.**



1 Large white pebble pearl lasso and hook necklace 20" **LP1-PG14.**

2 Twisted cording pendant with large pebble pearl drop (pictured in mustard cord with white/other colors available) 18" **PSMALL-CORD-PENDANT-G14.**

3 Stirrup and hook clasp with citrine details and large white pebble pearl 18" **SSPN3-G14.**



- 1 Chain mail mesh lariat with 8mm pearl details **CHAINMAIL-G14**
- 2 Pebble pearl lariat **BL1-MPG14**
- 3 Knotted freshwater pearl and cording bracelets in black, gold **KNOTTEDPEARL-BRAC-G14**
- 4 Large pebble pearl on bronze cording necklace/double wrap bracelet **NICOLE-PEARL-G14**



1

2

3

4

- 1 Endless freshwater pearl column necklace with Brancusi-inspired golden details **BRANCUSI-PEARL-LONG**
- 2 Pebble pearl simple pendant 17" **PP1-G14**
- 3 Brancusi pearl tie necklace adjustable, freshwater **BRAN-PEARL-TIE**
- 4 Claw set mother of pearl necklace 22" adjustable front hook closure **CLAW-NECK-G14**



1



2



3



4



5

1 Dark green 14mm obsidian stretchy bracelet with elongated gold hardware **TUBE-G14-OBS**

2 Dark green obsidian cluster stretchy bracelet set with golden tie and button **SALLY-G14-OBS**

3 Red tiger's eye 14mm stretchy bracelet with golden ridged bead detail **SB-G14-RT**

4 Red tiger's eye cluster stretchy bracelet set with golden tie and button detail **SALLY-G14-RT**

5 Tiger's eye cluster stretchy bracelet set with golden tie and button detail **SALLY-G14-TE**



- 1 Chunky open link chain with large pebble pearl and hook 20" adjustable [PPN3-G14](#)
- 2 Simple Brancusi bead and freshwater pearl slipknot cording necklace [BRANCUSI-SLIPKNOT-SG14](#)
- 3 Scattered Brancusi bead and freshwater pearl slipknot cording necklace [BRANCUSI-SLIPKNOT-2G14](#)
- 4 Pebble pearl medium cording pendant [PCP3-MMG14](#)
- 5 Brancusi and freshwater pearl slipknot bracelet [BRANCUSI-SLIPKNOT-BRAC-G14](#)



Large pebble pearl twisted pendants 17" **PSMALL-CORD-G14**

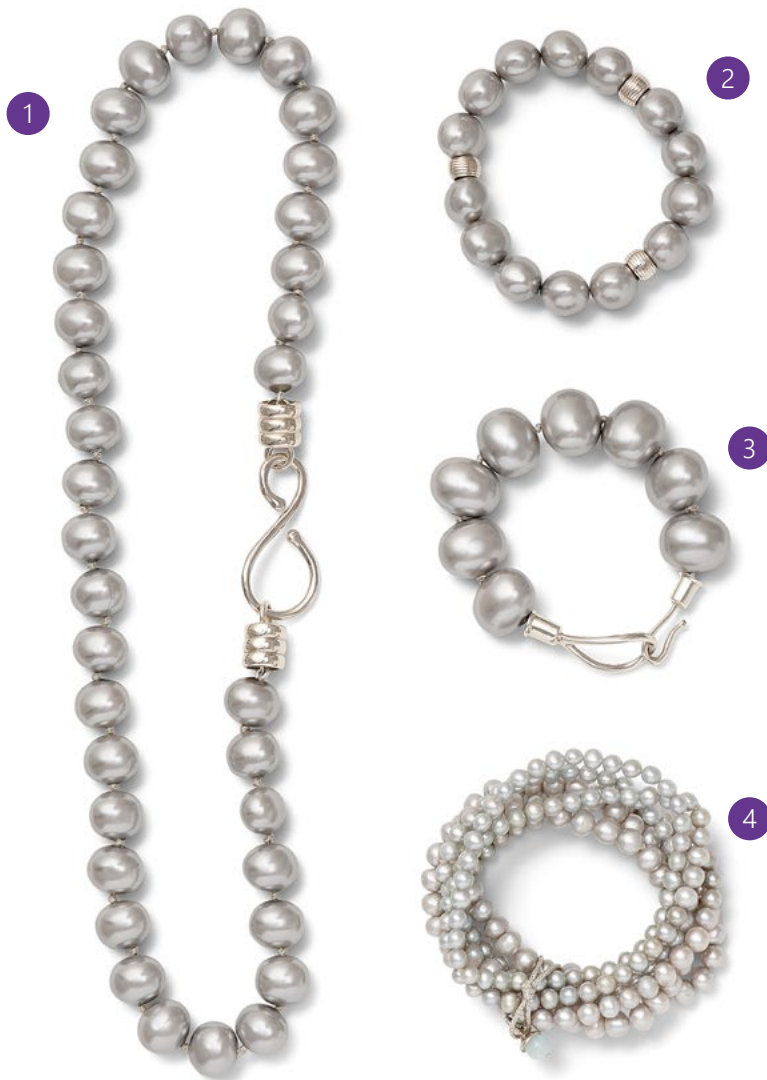
Cords in grey, ivory, black



- 1 Scrambled pebble mix of colors, 28" graduated **MULTI-PEBBLE-S**. (our choice on colors, quantities limited)
- 2 Silver bead cluster stretchy bracelet **SILVER-SALLY**
- 3 Scrambled large pebble stretchy bracelet with sterling bead detail **SB-S-ICE**
- 4 Peacock freshwater pearl cluster bracelet set (stretchy) with golden tie and button **SALLY-G14-MULTI**
- 5 Multiple hues Swarovski crystal knotted toggle bracelet **SWAROV-B-WS**



- 1 Baby elephant cord pendant 16-18: adjustable [ELEPH-CORD-S/S](#)
- 2 Large elephant medallion cord pendant 16-18" [ELEPH-BIG-CORD-S/S](#)
- 3 Chunky open chain with large pebble and hook necklace [PPN3-S](#)
- 4 Medium pebble pearl cord pendant sterling [PCP3-MM](#)
- 5 White freshwater pearl stretchy cluster bracelet set with silver cord tie and pearl button detail [SALLY-S-WFW](#)



Sterling silver and slate pebble pearl group, all styles available in the pebble pearl colors shown on color charts

- 1 24" medium pebble pearl S hook necklace [LP4-S/S](#).
- 2 Medium pebble stretch bracelet with sterling details [MP-SB](#).
- 3 Lasso and hook large pebble pearl bracelet to fit 7 ½" [LPB](#).
- 4 Grey freshwater pearl cluster stretchy bracelet set [SALLY-S/S-GREYFW](#).



Cording pendants with semi precious stones and pebble pearl

Tobacco cord, orange hued Botswana agate, white pebble

Cadet cord, grey Botswana agate and slate pebble

Taupe cord, burnt orange hued Botswana agate and taupe pebble

16-18 adjustable with pearl button closure [PCO3-G14](#)



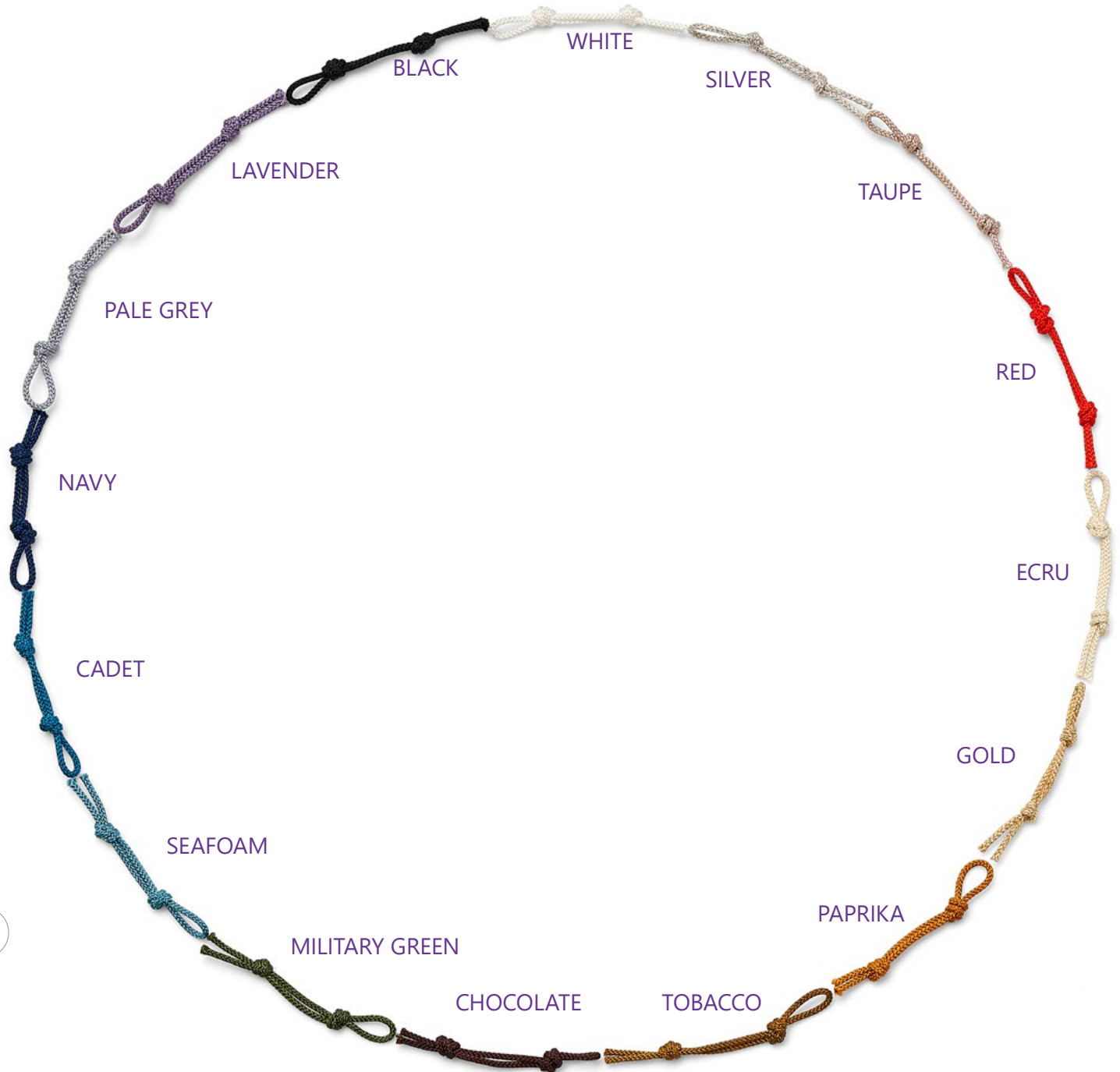
Large pebble pearl (see color chart on page 32) cord pendant 16-18" adjustable with pearl button closure

18 karat matte gold over brass **PCP3-G**

Polished 14 karat gold over brass **PCP3-G14**

925 Sterling silver **PCP3-S/S**

See page 31 for cord colors





1



2



3



4



5



6



7

- 1 Large Brancusi hoop in matte gold **BRAN-HOOP-LG**
- 2 Medium Brancusi hoop in matte gold **BRAN-HOOP-M-G**
- 3 Antique Etruscan mismatched earrings in matte gold **ANT-ETRUSC-LG**
- 4 Small antique Etruscan mismatched earrings in matte gold **ANT-ETRUSC-EG**
- 5 Brancusi pearl post earrings with 12mm mother of pearl **BRAN-PEARL-LG**
- 6 Small Brancusi post earrings with 10mm mother of pearl **BRAN-PEARL-SMG**
- 7 Endless column earringwire with 8mm mother of pearl **BRANCUSI-WIRE-G14**



1



2



3



4



5



6



7

- 1 Large oval cocktail ring with lapis lazuli **OVAL-RING-G14**
- 2 Twisted earwire with smooth jade **TEW-G14-JADE**
- 3 Turquoise clip earring **REC-CLIP-G14**
- 4 Twisted earwire with faceted lapis lazuli **TEW-G14-LAPIS**
- 5 Tiny bamboo hoops with claw-set 12mm lapis lazuli **CLAW-G14**
- 6 Twisted earwire with faceted seagreen quartz **TEW-G14-SEA**
- 7 Turquoise ring **REC-RING-G14**



1



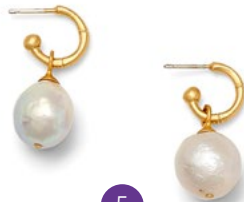
2



3



4



5



6



7



8

1

Double mother of pearl ring [DB-PEARL-RING-G](#)

2

Mother of pearl signet ring choose grey or white [PR1-G14](#)

3

Large freshwater pearl and circle earrings [PEARL-RING-EARR-G14](#)

4

Curved baby pebble ear wires [CEW-MG14](#)

5

Baroque freshwater pearl tiny bamboo hoop earrings [TBH1-B-G14](#)

6

7

8 Semi precious stone and 10mm pearl earrings in lapis/white, blue topaz/grey, citrine/white [SQE1-G14](#)



1



2



3



4



5



6



7



8



9



10

1 Sea Urchin post or clip [SEA-URCH-G.](#)

2 Baby Sandollar post [BABYSAND-G.](#)

3 Large sand dollar clip [SAND-CLIP-G.](#)

4 Medium bamboo hoop with 8mm white pearl [MBH1-GP.](#)

5 Large bamboo hoop with starburst drop [STAR-HOOP-G.](#)

6 Delicate endless hoop with 8mm pearl drop [SM-HOOP-G.](#)

7 Flower petal pearl on textured hoop earring [SWPE2-G14.](#)

8 Sunflower post earring [SUNFLOWER-GP.](#)

9 Baby sunflower post earring [BABY-SUNFLOWER.](#)

10 Pearl cabochon ring 6,7,8 [PR1-G.](#)



- 1 Textured clip with detachable drop **ECP-G-14**.
- 2 Sculpted clip with detachable drop **ECP-3-G**.
- 3 Smooth, lobe covering clip **PEC-MMG**.
- 4 Large pebble post **PEP-G14**.
- 5 Medium pebble post **PEP-MMG14**.
- 6 Baby pebble post **PEP-BABY-G14**.
- 7 Sterling silver textured clip with detachable pearl **EC-P-S/S**.
- 8 Sculpted sterling clip with detachable pearl **EC-P3-S/S**.
- 9 Smooth, lobe covering clip **PEC-MM-S/S**.
- 10 Skinny scoop baby pebble post **BABYSCOOP-S/S**.
- 11 Baby pebble post (also available in medium and large) **PEP-BABY-S/S**.



1



2



3



4



5

1 Starburst and pearl on medium bamboo hoop **STAR-HOOP-S/S**

2 Tiny bamboo hoop with medium pebble pearl drop **TBH1-MM**

3 4 5 Double pearl post earring **DB-EARR-S/S**

Pictured in white/cornflower, white/stormy and white/periwinkle



1



2



3



4



5



6



7

- 1 Mother of pearl and gold links post earring in cream **3-RING-G14**
- 2 Twisted earwire with smooth rose quartz **TEW-G14-RQ**
- 3 Double mother of pearl and gold link post earrings in natural hues **MOPE2-G14-N**
- 4 Twisted earwire with citrine-hued glass **TEW-G14-CG**
- 5 Double mother of pearl and gold link post earrings in cream **MOPE2-G14**
- 6 Twisted earwire with faceted creamy hue agate **TEW-G14-CREAM**
- 7 Twisted earwire with faceted carnelian **TEW-G14-CARN**



Available in: aquamarine, smooth turquoise lacquer, pale grey pearl, malachite, taupe pearl, white pearl, grey pearl, coral lacquer

ACORN-G (matte 18 karat finish)

ACORN-G14 (polished 14 karat finish)

ACORN-S/S (925 sterling silver)

SWPE3-G (matte 18 karat finish)

SWPE3-G14 (polished 14 karat finish)

SWPE3-S/S (925 sterling silver)



SNOW



CRYSTAL CLEAR



PALE SMOKE



NUDE



LAVENDER



HEMATITE



WINE



SEAFOAM



BRONZE



CORAL



TEAL



CITRINE



ICE BLUE



EMERALD



DARK SMOKEY



BRONZE



BLUSH

Polished 14 karat gold over brass SEW-G14-SW

925 sterling silver SEW-SW



WHITE



CHAMPAGNE



SLATE



DOVE GREY



STEEL



BEETLE



BEETLE



PRALINE



GRAPHITE



TURQUOISE



CORAL



18 karat matte gold over brass PEW-G



Polished 14 karat gold over brass PEW-G14



925 sterling silver PEW

Not pictured: OPAL



CORAL



TURQUOISE



WHITE

BEETLE



STEEL



GRAPHITE



OPAL



CHAMPAGNE



TAUPE



TAUPE



SLATE



MIMOSA



HONEY



NUDE



18 karat matte gold over brass PEW-MMG



Polished 14 karat gold over brass PEW-MMG14



925 sterling silver PEW-MM



STEEL



SLATE



TAUPE



HONEY



TAUPE



TURQUOISE



NUDE



OYSTER



OPAL



WHITE



18 karat matte gold over brass **BAYPEW-G**



Polished 14 karat gold over brass **BABYPEW-G14**



925 sterling silver **BABYPEW**