

FEATURING PATENTED TEA THAT BREWS LIKE COFFEE + LUXE SUGAR CUBES

T



## MEET TEA 2.0

MEET THE NEW  
GENERATION OF TEA.  
WE INVENTED A NEW TEA  
PROFILE THAT EVERYONE  
IS RAVING ABOUT.

TEAPRESSA®



# TEASPRESSA

Calling all coffee and tea lovers.  
This isn't your average cup of tea.

We have invented a new beverage category. Teaspresa has a patent on making tea like espresso. Enjoy the best of both worlds: the caffeine and robust consistency of coffee, no crash and jitters, and enhanced health benefits and flavours of tea. This new approach is nothing like the traditional method of tea brewing and is an all-natural, organic tea. That's right, no coffee, artificial flavours, nor additives.

Our specially formulated tea blends are designed for some of your favorite coffee brewing methods - aeropress, french press, and more. These teas make the perfect base for all your favorite coffee drinks. Tea americanos and lattes anyone? Yes, please. Follow your early morning ritual, while again experiencing the bonus of all their health benefits.

Teaspresa represents a lifestyle, a way of being. It stands for good health and the courageous, unflinching pursuit of big ideas. It stands for luxurious self-care and serves as a reminder of our worth. It stands for pausing to celebrate the small moments in life. It stands for bold, delicious flavours and high quality products. Most importantly, Teaspresa stands for the thriving, inspiring communiTEA that it serves.

Everything is proudly hand-made in the U.S.A

   @TEASPRESSA | #CESTLATEA

AS SEEN IN...

VOGUE  
Forbes

SHARK  
TANK

O  
THE OPRAH  
MAGAZINE

food  
network  
magazine

TORY BURCH  
FOUNDATION

GOOD  
MORNING  
AMERICA

BRIDES

MODERN  
LUXURY

BUSTLE

GOOD  
HOUSEKEEPING **Inc.**



delish heavy. REFINERY29

POPSUGAR.

restaurant INSIDER ● USA TODAY.

COSMOPOLITAN *teen*VOGUE



woven





# TEASPRESSA TEA

Our signature Teaspresa Tea blends taste great and brew just like your favourite cup of coffee. With blends containing just as much caffeine as an espresso shot (and none of the jitters!), all the richness and body of a cup of coffee, plus all the health benefits of tea, our teas are just like coffee... only better!

The secret is in the brewing. Brew the same way you'd brew a cup of coffee. There are no additives and no actual coffee, it is 100% pure loose-leaf, organic tea.

Shelf Life, 1 year | Made in the USA.

## MB MANHATTAN BLACK

**Notes:** Bold and toasty with chocolate

**Caffeine:** High like coffee

**Suggested Pairings:** Rose, vanilla, london fog, salted caramel, peach, raspberry, grapefruit, lemon, moscow mule, old fashioned, manhattan, mint julep, mojito

## CT CAPE TOWN

**Notes:** Enriched and woody with honey

**Caffeine:** Decaf

**Suggested Pairings:** Salted caramel, vanilla, peach, arcadia orange, lemon, moscow mule, old fashioned, manhattan, mint julep

## GG GREEN GOLD

**Notes:** Rich and earthy with smoke

**Caffeine:** Decaf

**Suggested Pairings:** Vanilla, rose, strawberry, peach, raspberry, grapefruit, arcadia orange, lemon, moscow mule, mint julep, mojito, cosmo

## CG CHARLES GREY

**Notes:** Fragrant and floral with citrus

**Caffeine:** High like coffee

**Suggested Pairings:** London fog, vanilla, grapefruit, arcadia orange, lemon, manhattan, mint julep

# HOW TO BREW TEASPRESSA TEA

Treat TEASPRESSA tea as if it were coffee. Your taste preferences determine the right brewing method for you. No need to say goodbye to your favorite coffee brewers and rituals, use them to make some TEASPRESSA!

**Tea Shot:** Our simplest and most preferred method of brewing. Like espresso, you can add water or milk to make it an americano or latte

**Cup of Tea:** This makes a full-bodied, robust cup of tea that is unlike any traditional tea brew approach. Dress your cup of tea with a splash of cream, sugar, or enjoy pure.

## TEA SHOT



### Aeropress

Best for travel. The quickest method to make a tea shot or even a cup of tea on the go!



### Moka Pot

Best taste. This method will make a quality shot and mimic tea shots brewed in our cafes.

## CUP OF TEA



### French Press

Best for sharing. If you're hosting a tea party or having several cups to yourself, this is it.



### Pour Over

Best for extracting the most intricate flavours and aromas. This method may take more time, but it's worth it.





## SIGNATURE LINE



**MANHATTAN BLACK TASTER**  
SKU: TT001  
3 servings



**CAPE TOWN TASTER**  
SKU: TT002  
3 servings



**GREEN GOLD TASTER**  
SKU: TT003  
3 servings



**CHARLES GREY TASTER**  
SKU: TT004  
3 servings



**MANHATTAN BLACK TEA JAR**  
SKU: TJ001  
3.84oz, 8-12 servings  
Overall Best Seller



**CAPE TOWN TEA JAR**  
SKU: TJ002  
3.20oz, 8-12 servings



**GREEN GOLD TEA JAR**  
SKU: TJ003  
3.68oz, 8-12 servings



**CHARLES GREY TEA JAR**  
SKU: TJ004  
3.68oz, 8-12 servings



# LUXE SUGAR CUBE

Modern. Luxurious. All-natural enhancer and INSTANT Drink maker

Make an instant flavored latte/mimosa/cocktail. Our LUXE Sugar Cubes are an elegant rendition of a timeless concept - the sugar cube. Our hand-made, 48 hour process, sugar cubes are designed to instantly flavour and elegantly sweeten drinks with less than a tsp of sugar, that's no more than 16 calories! It is an intimate experience in itself and provides elevated entertainment for you and your guests. No artificial flavours or dye, just all-natural ingredients and delicately fashioned.

All it takes is one cube to transform your coffee, tea or even sparkling water and champagne!

Available in | CUBE, STICK, MINI, JAR, and BULK

Display with interchangeable insert and storage drawer available

Shelf Life, 1 year | Made in the USA.





# HOW TO USE LUXE SUGAR CUBES

Make instant flavored lattes, mimosas and cocktails! We originally designed the LUXE Sugar Cubes to enhance the Teaspresa tea experience; however, we quickly realized how versatile they can be. Each cube has infinite pairings beyond the suggested application.

The longer your cube is in your drink, the more enhanced the flavour will become. If you prefer your drink to have more concentration of flavour/sweeter, add another cube or simple syrup!

## APPLICATION & USE



### Tea & Coffee

Pairs well with either tea and/or coffee to make an instant flavoured latte or iced drink!

How to use cube: Drop cube into drink, let cube saturate and stir. \*If iced, saturate cube with a few drops of hot water, muddle, and stir until well mixed.



### Spirits

Compatible with spirits or lager beer to create an instant cocktail.

How to use cube: Let cube saturate in dash of hot water, muddle, add spirit/lager beer, stir until well mixed



### Bubbles & Mimosas

Best for sparkling water or champagne to make an instant flavoured spritzer or mimosa!

How to use cube: Drop cube into drink and allow the cube to fully dissolve. To activate flavours faster, muddle.



## SIGNATURE LINE



### ROSE MINI

SKU: SM001

24g, 6 cubes

Overall Best Seller



### VANILLA MINI

SKU: SM002

24g, 6 cubes



### LONDON FOG MINI

SKU: SM003

24g, 6 cubes



### SALTED CARAMEL MINI

SKU: SM004

24g, 6 cubes



### ROSE SUGAR STICK

SKU: SS001

1.7oz, 12 cubes



### VANILLA SUGAR STICK

SKU: SS002

1.7oz, 12 cubes



### LONDON FOG SUGAR STICK

SKU: SS003

1.7oz, 12 cubes



### SALTED CARAMEL SUGAR STICK

SKU: SS004

1.7oz, 12 cubes



### ROSE SUGAR CUBE

SKU: SC001

3oz, 27 cubes



### VANILLA SUGAR CUBE

SKU: SC002

3oz, 27 cubes



### LONDON FOG SUGAR CUBE

SKU: SC003

3oz, 27 cubes



### SALTED CARAMEL SUGAR CUBE

SKU: SC004

3oz, 27 cubes



## ROSE

**Notes:** Captures the scent of a dark red rose in a delicate, clear, and smooth manner

**Suggested Pairings:** Manhattan Black tea, coffee, lemonade, sparkling water, vodka, and champagne.

**Creates Instant:** Black Rose Latte, rose lemonade/ spritzer/ cocktail/ champagne

## VANILLA

**Notes:** Sweet, comforting, mellow flavour with velvety after-tones of Madagascar Vanilla

**Suggested Pairings:** All Signature Teas, coffee, bourbon, whiskey

**Creates Instant:** Swiss Ivory Latte (using Green Gold, add white chocolate chips), vanilla latte/bourbon/whiskey

## LONDON FOG

**Notes:** Bright, herbal floral summer lavender softened with a hint of rich Madagascar Vanilla.

**Suggested Pairings:** Charles Grey/Manhattan Black tea, coffee, lemonade, and gin.

**Creates Instant:** London Fog Latte, lavender latte/ lemonade and Lavender Collins cocktail

## SALTED CARAMEL

**Notes:** Sweet, buttery taste heightened with fleur de sel French sea salt.

**Suggested Pairings:** Cape Town tea, coffee, and champagne.

**Creates Instant:** Caramel Cape Latte, salted caramel latte/champagne (creating a buttery chardonnay like taste)

## BUBBLIES & MIMOSAS



### STRAWBERRY MINI

SKU: SM005

24g, 6 cubes



### PEACH MINI

SKU: SM006

24g, 6 cubes



### RASPBERRY MINI

SKU: SM007

24g, 6 cubes



### STRAWBERRY SUGAR STICK

SKU: SS005

1.7oz, 12 cubes



### PEACH SUGAR STICK

SKU: SS006

1.7oz, 12 cubes



### RASPBERRY SUGAR STICK

SKU: SS007

1.7oz, 12 cubes



## STRAWBERRY

**Notes:** Bold, naturally sweet and savory plump summer strawberry

**Suggested Pairings:** Iced Manhattan Black/Green Gold, lemonade, sparkling water, tequila, mezcal, and champagne.

**Creates Instant:** Strawberry tea/ lemonade/ spritzer/ margarita and the classic strawberries and champagne

## PEACH

**Notes:** Sweet and juicy delicate taste and aroma

**Suggested Pairings:** Iced Manhattan Black/Green Gold tea, iced coffee, lemonade, sparkling water, and champagne.

**Creates Instant:** Peach tea/ coffee/ lemonade/ spritzer and bellini

## RASPBERRY

**Notes:** Perfect balance of sweet and tart.

**Suggested Pairings:** Iced Manhattan Black/Green Gold, iced coffee, lemonade, sparkling water, vodka, and champagne.

**Creates Instant:** Grapefruit tea/ coffee/ lemonade/ spritzer/ and raspberry martini cocktail

## GRAPEFRUIT

**Notes:** Tart and sweet ripened pink grapefruit

**Suggested Pairings:** Iced Manhattan Black/Green Gold/Charles Grey tea, iced coffee, lemonade, sparkling water, tequila, mezcal, lager beer, and champagne.

**Creates Instant:** Grapefruit tea/ coffee/ lemonade/ spritzer/ margarita/ mimosa, radler shandy and paloma

## ARCADIA ORANGE

**Notes:** Tangy, sweet and slightly acidic

**Suggested Pairings:** Iced Green Gold/Charles Grey tea, iced coffee, lemonade, sparkling water, vodka, lager beer and champagne.

**Creates Instant:** Orange tea/ coffee/ lemonade/ spritzer/ classic mimosa, orange shandy, and screwdriver cocktail

## LEMON

**Notes:** Fresh citrusy sour and bright acidic zest

**Suggested Pairings:** All Signature Teas, iced coffee, sparkling water, vodka, gin, lager beer, and champagne.

**Creates Instant:** Lemon and tea/Arnold Palmer (no need for wedges), lemon iced coffee/ spritzer/ mimosa, classic shandy, Bee's Knees and Lemon Drop cocktail



### GRAPEFRUIT MINI

SKU: SM008

24g, 6 cubes



### ARCADIA ORANGE MINI

SKU: SM009

24g, 6 cubes



### LEMON MINI

SKU: SM010

24g, 6 cubes



### GRAPEFRUIT SUGAR STICK

SKU: SS008

1.7oz, 12 cubes



### ARCADIA ORANGE SUGAR STICK

SKU: SS009

1.7oz, 12 cubes



### LEMON SUGAR STICK

SKU: SS010

1.7oz, 12 cubes



## MOSCOW MULE

**Notes:** Zesty ginger and hint of tangy lime  
**Suggested Pairings:** Manhattan Black/Cape Town/Green Gold, coffee, sparkling water, and vodka.  
**Creates Instant:** Ginger tea/ coffee, ginger ale, and Moscow Mule cocktail

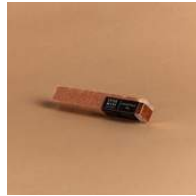
## OLD FASHIONED

**Notes:** Herbal with sweet and bitter balance of tropical orange/spices and a hint of deep cherry (bye bye garnish!)  
**Suggested Pairings:** Manhattan Black/Cape Town tea, coffee, and bourbon.  
**Creates Instant:** Sweet Orange bitters tea/ coffee/ and Old Fashioned cocktail

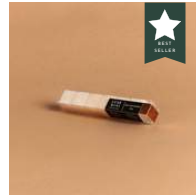
## MANHATTAN

**Notes:** Multi-dimensional dry vermouth with fruity and honey notes completed with herbal undertones and black cherry  
**Suggested Pairings:** Manhattan Black/Cape Town, coffee, lemonade, and rye whiskey.  
**Creates Instant:** Fruit and dark cherry bitters tea/ coffee/ lemonade and Manhattan cocktail

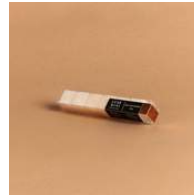
## SPIRITS



**MOSCOW MULE MINI**  
SKU: SM011  
24g, 6 cubes



**OLD FASHIONED MINI**  
SKU: SM012  
24g, 6 cubes



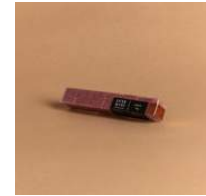
**MANHATTAN MINI**  
SKU: SM013  
24g, 6 cubes



**MINTJULEP MINI**  
SKU: SM014  
24g, 6 cubes



**MOJITO MINI**  
SKU: SM015  
24g, 6 cubes



**COSMO MINI**  
SKU: SM016  
24g, 6 cubes



**MOSCOW MULE SUGAR STICK**  
SKU: SS011  
1.7oz, 12 cubes



**OLD FASHIONED SUGAR STICK**  
SKU: SS012  
1.7oz, 12 cubes



**MANHATTAN SUGAR STICK**  
SKU: SS013  
1.7oz, 12 cubes



**MINT JULEP SUGAR STICK**  
SKU: SS014  
1.7oz, 12 cubes



**MOJITO SUGAR STICK**  
SKU: SS015  
1.7oz, 12 cubes



**COSMO SUGAR STICK**  
SKU: SS016  
1.7oz, 12 cubes



## MINT JULEP

**Notes:** Cool, sweet spearmint accompanied by a savory powdered sugar taste  
**Suggested Pairings:** All Signature Teas, lemonade, and bourbon.  
**Creates Instant:** Mint tea/ coffee/ lemonade and Mint Julep cocktail

## MOJITO

**Notes:** Tangy and tart lime with hint of sweet spearmint  
**Suggested Pairings:** Iced Manhattan Black/Green Gold tea, lemonade, sparkling water and white rum.  
**Creates Instant:** Lime tea/ lemonade, limeade, and Mojito cocktail.

## COSMO

**Notes:** Tart and sweet ripe cranberry with light orange flavour brightened with citrus lime.  
**Suggested Pairings:** Iced Green Gold, iced coffee, lemonade, sparkling water, vodka, and champagne.  
**Creates Instant:** Cranberry tea/ coffee/ lemonade/ spritzer/ and Cosmo cocktail

# LUXE JARS

Perfect for parties!



**ROSE JAR**  
SKU: SJ001  
24g, 25 cubes



**VANILLA JAR**  
SKU: SJ002  
24g, 25 cubes



**LONDON FOG JAR**  
SKU: SJ003  
24g, 25 cubes



**SALTED CARAMEL JAR**  
SKU: SJ004  
24g, 25 cubes



**STRAWBERRY JAR**  
SKU: SJ005  
24g, 25 cubes



**PEACH JAR**  
SKU: SJ006  
24g, 25 cubes



**RASPBERRY JAR**  
SKU: SJ007  
24g, 25 cubes



**GRAPEFRUIT JAR**  
SKU: SJ008  
24g, 25 cubes



**ARCADIA ORANGE JAR**  
SKU: SJ009  
24g, 25 cubes



**LEMON JAR**  
SKU: SJ010  
24g, 25 cubes



**MOSCOW MULE JAR**  
SKU: SJ011  
24g, 25 cubes



**OLD FASHIONED JAR**  
SKU: SJ012  
24g, 25 cubes



**MANHATTAN JAR**  
SKU: SJ013  
24g, 25 cubes



**MINT JULEP JAR**  
SKU: SJ014  
24g, 25 cubes



**MOJITO JAR**  
SKU: SJ015  
24g, 25 cubes



**COSMO JAR**  
SKU: SJ016  
24g, 25 cubes





# LUXE FLEUR TOPPINGS

Beautiful. Edible. Botanicals for drink enhancement and garnish.

Garnish your favorite drink to give it an aromatic and breathtaking presentation. Enjoy decorating or infusing with: tea, coffee, water, champagne, bubbly, sparkling sodas, lemonades, ice cubes, cookies and more!

Shelf Life, 1 year | Packaged in the USA.

## APPLICATION & USE



### Brew

Brew to make botanical tea. Add 1 tbsp of botanicals to the bottom of the cup, pour 8oz of boiling water on top, steep for 5 minutes, enjoy!



### Rim

Rim your glass. Flip glass and wet up to half an inch of the glass rim with water or simple syrup then dip in botanicals



### Garnish

Garnish your favorite drink to give it an aromatic and beautiful presentation



# LUXE ELIXIR

Pure. True Flavour. No Sugar drink enhancer.

Experience our new way of enjoying rich flavour. The LUXE Elixir Collection is an all-natural, sugar-free line that offers enhanced beautiful, clean flavour to your beverage.

Enjoy any of these elixirs pure or enhanced with your sweetener of choice - honey, raw sugar, or stevia. Either way, only use one drop for every 12oz drink. This will provide an elevated tasting experience for you to sip.

Shelf Life, 1 year | Made in the USA.

## APPLICATION & USE

### Tea & Coffee



Pairs well with either tea and/or coffee to make an instant flavoured latte or iced drink!

How to use cube: Add one drop to drink, stir

### Spirits



Compatible with spirits, will create an instant cocktail.

How to use cube: Add one drop to drink, stir

### Bubbly & Champagne



Best for sparkling water or champagne to make an instant flavoured spritzer or mimosa!

How to use cube: Add one drop to drink

## ROSE

**Notes:** Captures the scent of a dark red rose in a delicate, clear, and smooth manner

**Suggested Pairings:** Manhattan Black tea, coffee, lemonade, sparkling water, water, vodka, and champagne.

**Creates Instant:** Black Rose Latte, rose lemonade/ spritzer/ spa water/ cocktail/ champagne

## VANILLA

**Notes:** Sweet, comforting, mellow flavour with velvety after-tones

**Suggested Pairings:** All Signature Teas, coffee, bourbon, whiskey

**Creates Instant:** Swiss Ivory Latte (using Green Gold, add white chocolate chips), vanilla latte/bourbon/whiskey

## LONDON FOG

**Notes:** Bright, herbal floral summer lavender softened with a hint of a mellow vanilla.

**Suggested Pairings:** Charles Grey/Manhattan Black tea, coffee, lemonade, and gin.

**Creates Instant:** London Fog Latte, lavender latte/ lemonade and Lavender Collins cocktail

## SIGNATURE LINE



### ROSE ELIXIR, 1OZ

SKU: E1001

1oz, 150 servings



### LONDON FOG ELIXIR, 1OZ

SKU: E1002

1oz, 150 servings



### VANILLA ELIXIR, 1OZ

SKU: E1003

1oz, 150 servings



### ROSE ELXIR, 2OZ

SKU: E2001

2oz, 300 servings



### LONDON FOG ELIXIR, 2OZ

SKU: E2002

2oz, 300 servings



### VANILLA ELIXIR, 2OZ

SKU: E2003

2oz, 300 servings





# LUXE FLEUR TOPPINGS

Beautiful. Edible. Botanicals for drink enhancement and garnish.

Garnish your favorite drink to give it an aromatic and breathtaking presentation. Enjoy decorating or infusing with: tea, coffee, water, champagne, bubbly, sparkling sodas, lemonades, ice cubes, cookies and more!

Shelf Life, 1 year | Packaged in the USA.

## APPLICATION & USE



### Brew

Brew to make botanical tea. Add 1 tbsp of botanicals to the bottom of the cup, pour 8oz of boiling water on top, steep for 5 minutes, enjoy!



### Rim

Rim your glass. Flip glass and wet up to half an inch of the glass rim with water or simple syrup then dip in botanicals



### Garnish

Garnish your favorite drink to give it an aromatic and beautiful presentation





## SIGNATURE LINE



**ROSE PETALS MINI**  
SKU: FM001  
6g, 6 servings  
Overall Best Seller



**JASMINE BUDS MINI**  
SKU: FM002  
5.4g, 6 servings



**BLUE DAISY MINI**  
SKU: FM003  
5g, 6 servings



**MUM FLOWERS MINI**  
SKU: FM004  
6.4g, 6 servings



**ROSE PETALS STICK**  
SKU: FS001  
14.6g, 12 servings



**JASMINE BUDS STICK**  
SKU: FS002  
11.5g, 12 servings



**BLUE DAISY STICK**  
SKU: FS003  
10.6g, 12 servings



**MUM FLOWERS STICK**  
SKU: FS004  
12.5g, 12 servings



**ROSE PETALS JAR**  
SKU: FJ001  
10.9g, 25 servings



**JASMINE BUDS JARS**  
SKU: FJ002  
16.4g, 25 servings



**BLUE DAISY JAR**  
SKU: FJ003  
8.5g, 25 servings



**MUM FLOWERS JAR**  
SKU: FJ004  
13g, 25 servings



### ROSE PETALS

**Notes:** Light, subtle and floral. The taste captures the fresh garden aroma

**TEAPRESSSSA Signature drink topping:** Black Rose

### JASMINE BUDS

**Notes:** Delicate profile with hints of sweetness and a fresh finish. A bright addition to any mixture.

**TEAPRESSSSA Signature drink topping:** Swiss Ivory

### BLUE DAISY

**Notes:** Very faint mild spice and subtle clove-like hints. Adds more texture

**TEAPRESSSSA Signature drink topping:** London Fog

### MUM FLOWER

**Notes:** Savory herbal with the sweetest of mild honey and a slight tangy bite

**TEAPRESSSSA Signature drink topping:** Caramel Cape

# GIFT SETS

Gift and Sample.

Can't decide which one to fully commit to? Now you have the option to try or gift them all. We offer preset packages as well as the option to mix n' match the most fitting gifting for your family and friends.

These gift sets have been named "Most Luxurious," "Top Gourmet Mother's Day Gift," "A Must for Brunch," "Holiday Gifts for Her" by several notable publications such as Forbes, Delish, and Refinery 29 to name a few. Made in the USA.

## TEA GIFTS



**TEAPRESSA STARTER KIT**  
SKU: GT001

**TEA TASTER KIT**  
SKU: GT002

## LUXE MINI TRIO SUGAR KITS



**INSTANT CHAMPAGNE COCKTAIL KIT**  
SKU: GS002  
Includes: Strawberry, Peach, and Raspberry MINI  
Overall Best Seller

**CLASSIC COCKTAIL KIT**  
SKU: GS003  
Includes: Moscow Mule, Old Fashioned, and Manhattan MINI

**FOUNDERS FAVORITE KIT**  
SKU: GS019  
Includes: Rose Petals, Rose, and Vanilla MINI

**INSTANT MIMOSA BAR KIT**  
SKU: GS005  
Includes: Grapefruit, Arcadia Orange, and Lemon MINI

# NEW

## CRYSTAL CUBE LINE | SPARKLY CUBES

Featuring the same fun flavours you know except now there is a glittery surprise! Drop the cube, swirl, and watch your drink sparkle!



### CRYSTAL CHAMPAGNE COCKTAIL KIT

SKU: GSC012

Includes: Crystal Strawberry, Crystal Peach, and Crystal Raspberry MINI

### CRYSTAL MIMOSA KIT

SKU: GSC015

Includes: Grapefruit, Arcadia Orange, and Lemon MINI

## LATTE WELLNESS KITS | COLORFUL LATTES

Make a beautiful, colorful, and healthy barista beverage in 3 easy steps.



### MATCHA LATTE KIT

SKU: GS025

Includes: Rose Petals, Matcha, and Vanilla MINI



### GOLDEN LATTE KIT

SKU: GS026

Includes: Rose Petals, Turmeric, and Vanilla MINI



### RUBY LATTE KIT

SKU: GS027

Includes: Rose Petals, Ruby, Vanilla MINI



# ACCESSORIES

BREW AND CREATE IN STYLE.



**LUXE SUGAR CUBE  
DISPLAY | MIMOSA +  
COCKTAIL**

SKU: SD001



**LUXE SUGAR CUBE  
DISPLAY | MIMOSA +  
LATTE**

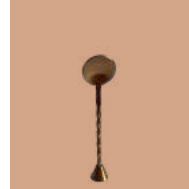
SKU: SD002



**LUXE SUGAR CUBE  
DISPLAY | MIMOSA +  
COCKTAIL + LATTES**

SKU: SD003

## SIGNATURE LINE



**MINI SPOON +  
MUDDLER**

SKU: BA001



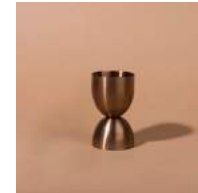
**SPOON + MUDDLER**

SKU: BA002



**TEA SCOOP**

SKU: TA002



**JIGGER**

SKU: BA003



**MUDDLER**

SKU: BA004

# SEASONAL

All seasonal available during set dates & while supplies last.  
SPRING AVAILABLE 1/1 - 5/1



## IRISH CREAM MINI

SKU: SM020  
24g, 6 cubes



## SHAMROCK SHANDY MINI

SKU: SM021  
24g, 6 cubes



## BLACK CHERRY ANISE MINI

SKU: SM022  
24g, 6 cubes



## ST PATTYS SUGAR SET

SKU: GS010  
Includes: Irish Cream,  
Shamrock Shandy, and  
Black Cherry Anise MINI



## INSTANT BELLINI KIT

SKU: GSC030  
Includes: Rose Petals,  
Peach, Arcadia Orange MINI



## INSTANT ROSÉ KIT

SKU: GSC031  
Includes: Rose Petals,  
Raspberry, Grapefruit MINI



## INSTANT PINK LEMONADE MIMOSA

SKU: GSC032  
Includes: Rose Petals,  
Strawberry, Lemon MINI



## SPRING COCKTAIL KIT

SKU: GS004  
Includes: Mint Julep, Mojito,  
and Cosmo MINI



## BEER SHANDY COCKTAIL KIT

SKU: GSC009  
Includes: Grapefruit, Lime,  
and Lemon MINI





# FALL/HOLIDAY

All seasonal available during set dates & while supplies last.  
**AVAILABLE 6/1 - 11/15**



**PUMPKIN SPICE MINI**  
 SKU: SM020  
 24g, 6 cubes



**SPICED APPLE TODDY MINI**  
 SKU: SM021  
 24g, 6 cubes



**WHITE PEPPERMINT MOCHA MINI**  
 SKU: SM022  
 24g, 6 cubes



**PUMPKIN SPICE LATTE KIT**  
 SKU: GS017  
 Includes: Rose Petals, Pumpkin Spice, White Chocolate Cocoa MINI



**PUMPKIN SPICE SUGAR STICK**  
 SKU: SM020  
 24g, 6 cubes



**SPICED APPLE TODDY SUGAR STICK**  
 SKU: SM021  
 24g, 6 cubes



**WHITE PEPPERMINT MOCHA SUGAR STICK**  
 SKU: SM022  
 24g, 6 cubes



**FALL KIT**  
 SKU: GS018  
 Includes: Safflower petals, Spiced Apple Toddy, Vanilla MINI



**PUMPKIN SPICE JAR**  
 SKU: SM020  
 24g, 25 cubes



**SPICED APPLE TODDY JAR**  
 SKU: SM021  
 24g, 25 cubes



**WHITE PEPPERMINT MOCHA JAR**  
 SKU: SM022  
 24g, 25 cubes



**HOLIDAY SUGAR SET**  
 SKU: GS007  
 Includes: Pumpkin Spice, Spiced Apple Toddy, White Chocolate Peppermint MINI

# WINTER/HOLIDAY

All seasonal available during set dates & while supplies last.  
 AVAILABLE 6/1 - 2/15



## CLASSIC HOLIDAY

SKU: GS035

Includes: Eggnog, White Peppermint Mocha, Gingerbread MINI



## CHRISTMAS COOKIE DRINK KIT

SKU: GSC025

Includes: Vintage Christmas Cookie Sprinkles, Sugar Cookie, Crushed Candy Cane MINI



## HOT COCOA KIT

SKU: GS020

Includes: marshmallow/peppermint toppings, white chocolate cocoa, and classic cocoa MINI



## WHITE CHOCOLATE COCOA MINI

SKU: SM023

24g, 6 cubes



## WHITE CHOCOLATE COCOA SUGAR STICK

SKU: SM023

1.7oz, 12 cubes



## WHITE CHOCOLATE COCOA JAR

SKU: SJ023

24g, 25 cubes



## CLASSIC COCOA MINI

SKU: SM024

24g, 6 cubes



## CLASSIC COCOA SUGAR STICK

SKU: GS024

1.7oz, 12 cubes



## CLASSIC COCOA SUGAR JAR

SKU: GS024

24g, 25 cubes

"I started the company in Jan 2015 selling tea on a laundry cart in the streets of Phoenix and to this day I am still the 100% owner of the company and all of our products are proudly hand-made in the Phoenix, AZ. It wasn't easy building this dream without outside investors and it is quite the challenge getting through it especially with COVID-19. Although we've had to close down our shops and pivot quite a bit to adjust to the times, we're grateful to be here another day to serve you. It is our pleasure doing business with you and we can't thank you enough for your support."



Allison DeVane, Founder & Owner

## TEAS PRESS A

To place an order or for custom order inquiries email:  
[wholesale@teasprensa.com](mailto:wholesale@teasprensa.com).

Photography: Griffith Imagery and Shannon Gilpin