



Rescue Can Return A Compressor To Peak Efficiency

Applications

Rescue is ideal for a broad range of applications:

- Industrial Blower
- Portable
- Reciprocating Piston
- Rotary Screw
- Rotary Vane

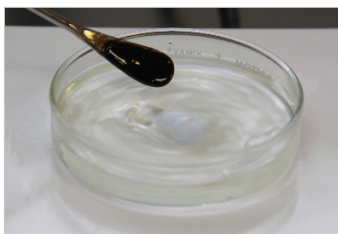
Easily rid your system of varnish and carbon

Rescue is designed to clean heavily varnished air compressors efficiently and safely while the compressor remains in operation — helping to minimize maintenance-related costs and downtime. This cleaner solubilizes the varnish and carbon into the lubricant and works to restore the compressor to peak efficiency.

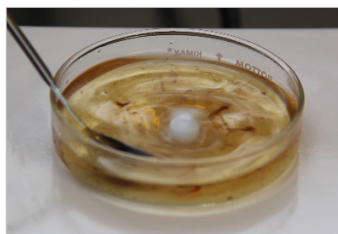
- Contaminants are easier to filter out
- Helps to prevent large sludge particles from traveling through the system where they could potentially cause harm

Performance advantages

- Removes heavy varnish, deposits and debris
- Improves efficiency by relieving excess oil back pressure
- Cleans critical system components
- Corrects fouled cooler heating
- Can be used as a preventative measure



Compressor sludge on spatula



Rescue breaks up compressor sludge



Sludge completely dissolved in Rescue cleaner

Rescue

Concentrated Compressor Cleaner

How is Rescue used?

Rescue is added directly to the existing charge of lubricant – based on the contamination level of the compressor. If the current charge of lubricant inside of the compressor is severely deteriorated, it is recommended the oil is drained and the Rescue cleaner added to a new charge of semi-synthetic or partial-synthetic lubricant.

1. Determine the amount of Rescue required for the compressor.
2. Drain a volume of oil from the compressor equal to the volume of Rescue being added.
3. Add Rescue to the lubricant sump of the compressor up to recommended concentration.
4. Operate the compressor as normal for 24-72 hours. Monitor filters for clogging; replace as required.
5. If the compressor is shut down at any time during the cleaning period, ensure it is run for at least 30 minutes prior to draining the lubricant-cleaner mixture.
6. Drain the lubricant-cleaner mixture from the compressor while the oil is still hot. You get the most effective drain when the oil is not allowed to cool and settle.
7. Refill the compressor with a high-quality, synthetic lubricant.

How much Rescue should I use?

Rescue is ideal for use in concentrations between 5%-20%. Contact an Isel representative for the ideal Rescue concentration for your system.

Severity of Deposits	Recommended Concentration of RESCUE
Light Deposits Standard Used Oil Preventative Maintenance	5%-10%
Severely Degraded Oil Minimal Deposits Reconditioning Maintenance	10%-15%
Heavy Deposits Standard Used Oil Clogged Oil Cooler	15%-20%
Severe Deposits Severely Degraded Oil Clogged Oil Cooler Worst Case Scenario	20%* *May Require Multiple Cleanings

Questions, Concerns or Comments?

Please contact your Isel sales representative for additional information.



5266 Highway Avenue
Jacksonville, FL 32254
USA

toll-free: 1-800-503-9533
phone: 904-378-3232
fax: 904-378-9696

email: sales@iselinc.com
web: www.iselinc.com

*Contact Isel technical support, system may require multiple cleanings.

Product properties are typical results and should not serve as a sole resource for determining the correct product for a particular application. Please consult an Isel representative to ensure that the product is the correct choice for the application. Revised 5/2018