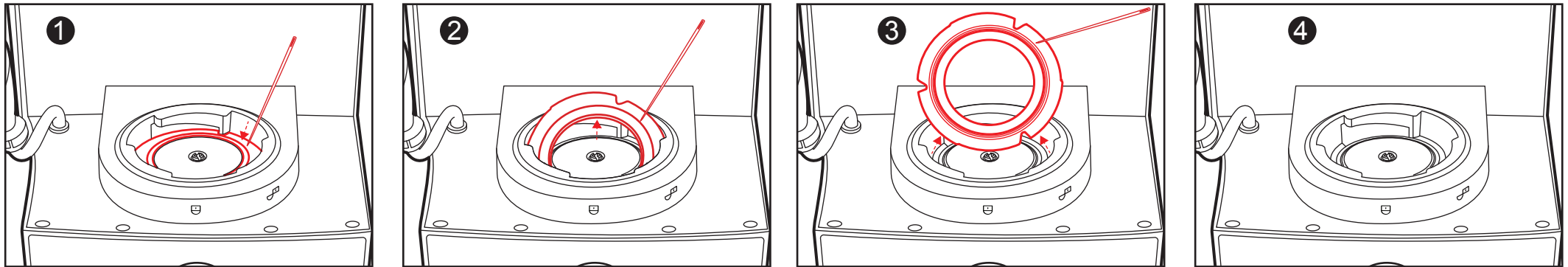
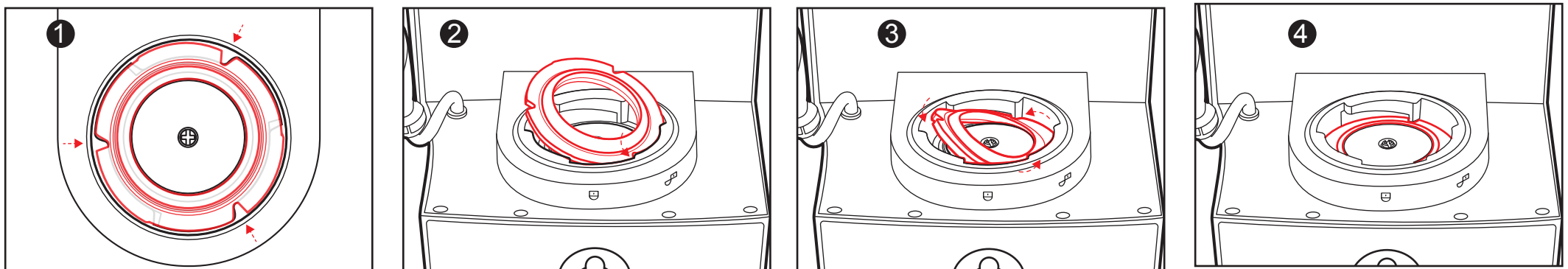


**STEP 1: Empty the water tank, and remove all accessories as shown before turning the machine upside-down.**



**STEP 2: Follow steps as shown to remove the old silicone ring. Suggest to use a sewing needle as shown (not included)**



**STEP 3: Replace the new silicone ring as shown above, installing counter clockwise from right to left. Make sure the ring is tight and flush.**